

3850 & 3830 Shore Drive

Indianapolis, IN 46254

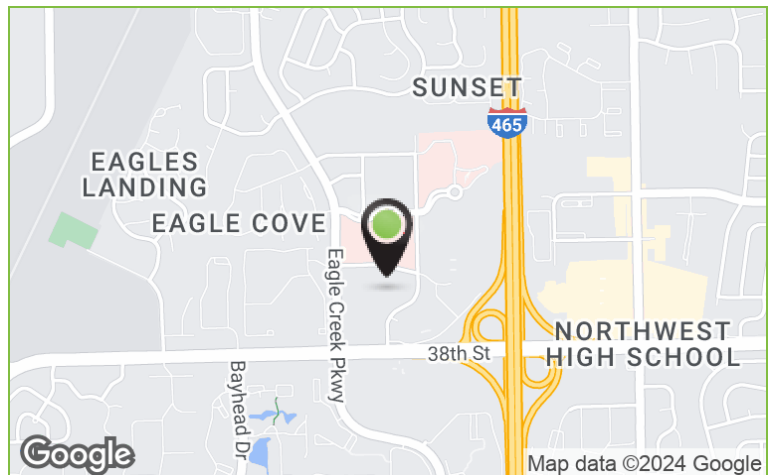


Medical Office

1,332 - 4,405 SF

PROPERTY HIGHLIGHTS

- Recently renovated common areas
- Easy access to I-465
- Owner occupied
- Ample Parking
- Exterior signage available



LOCATION DESCRIPTION

Office and Medical Office Space well situated on the west side of Indianapolis, outside the I-465 loop. Located in the well maintained Eagle Highlands Professional Center.

Mike Short
Vice President
Mike@alopg.com
C: 317.800.4664

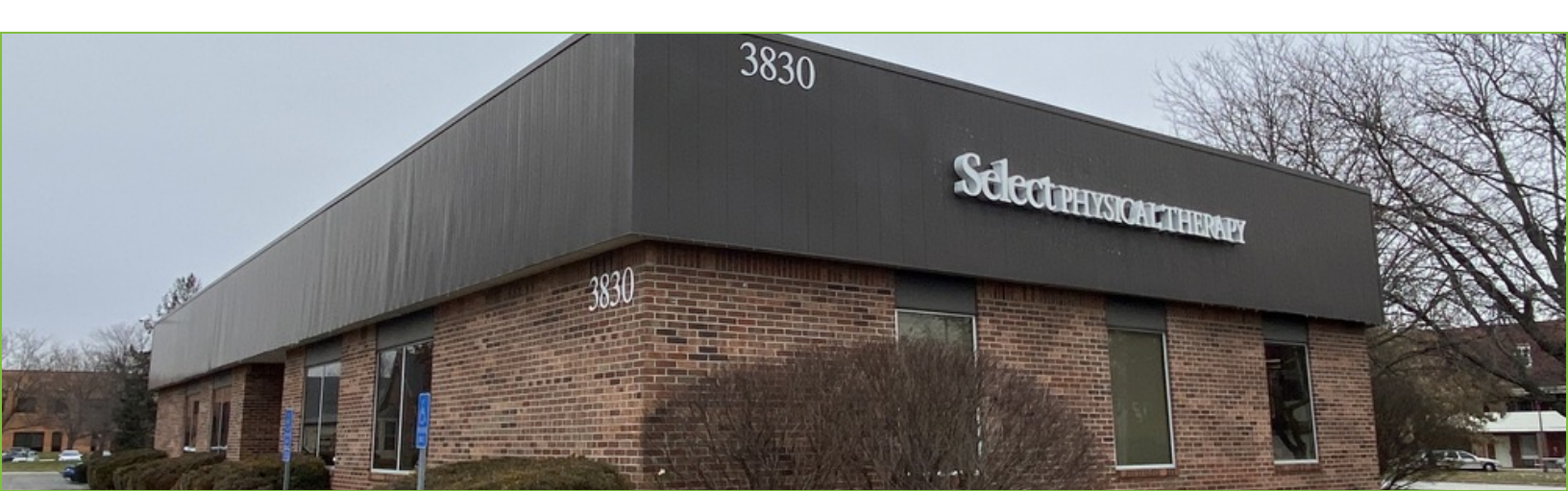
ALO Property Group
9075 N. Meridian St., Ste. 175
Indianapolis, IN 46260
O: 317.853.7500
www.alopg.com



3850 & 3830 Shore Drive

Indianapolis, IN 46254

Photos



Mike Short
Vice President
Mike@alopg.com
C: 317.800.4664

ALO Property Group
9075 N. Meridian St., Ste. 175
Indianapolis, IN 46260
O: 317.853.7500
www.alopg.com



Although all information furnished regarding property for sale, rental, or financing is from sources deemed as reliable, such information has not been verified and no express representation is made nor is any to be implied as to the accuracy thereof and it is submitted subject to errors, omissions, change of price, rental or other conditions, prior to sale, lease or financing, or withdrawal without notice and to any special conditions imposed by our principal.

3850 & 3830 Shore Drive

Indianapolis, IN 46254

Suite 300 - 1,332 SF



Mike Short
Vice President
Mike@alopg.com
C: 317.800.4664

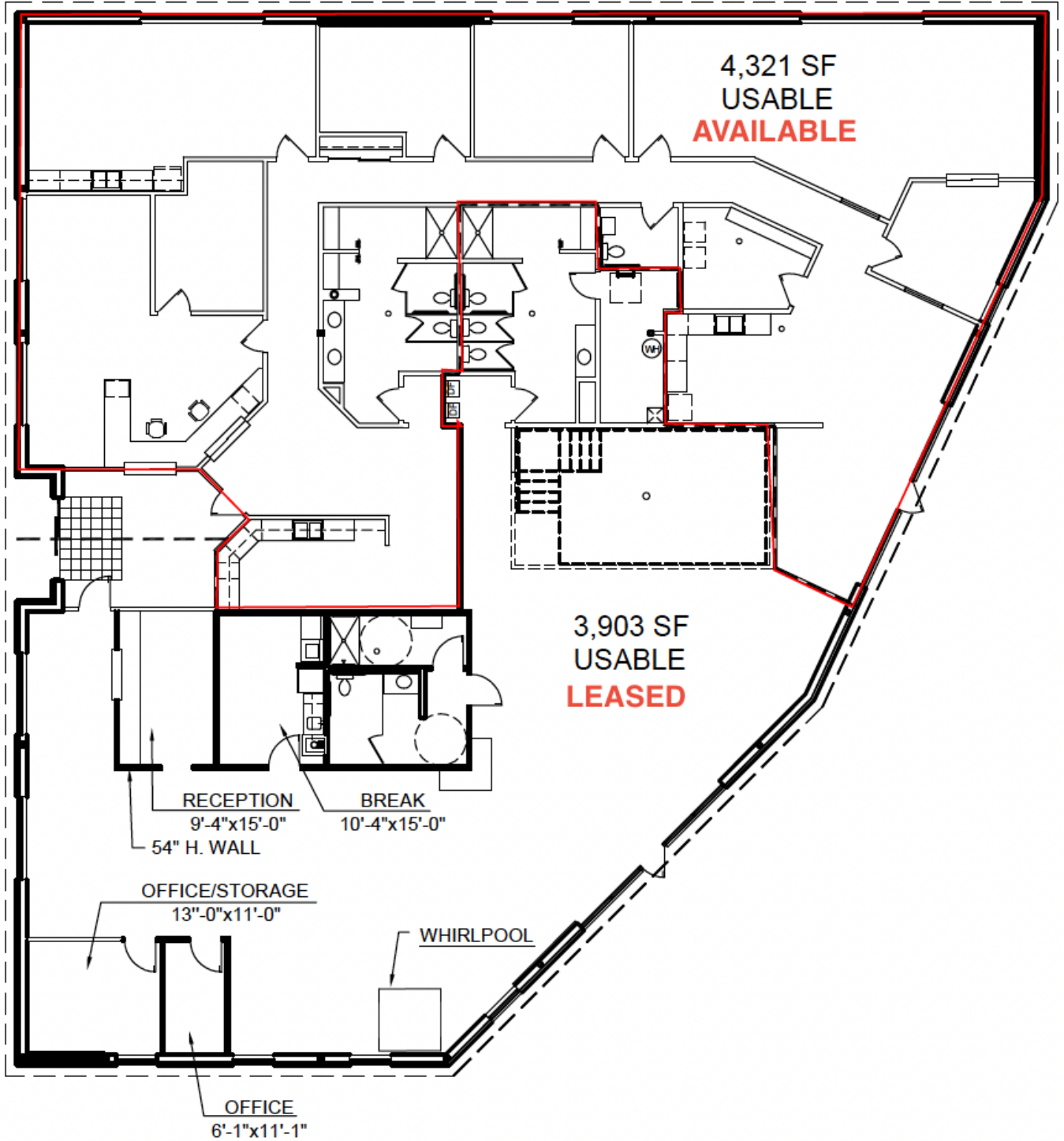
ALO Property Group
9075 N. Meridian St., Ste. 175
Indianapolis, IN 46260
O: 317.853.7500
www.alopg.com



3850 & 3830 Shore Drive

Indianapolis, IN 46254

3830 - Suite B - 4,405 SF



Mike Short
Vice President
Mike@alopg.com
C: 317.800.4664

ALO Property Group
9075 N. Meridian St., Ste. 175
Indianapolis, IN 46260
O: 317.853.7500
www.alopg.com

