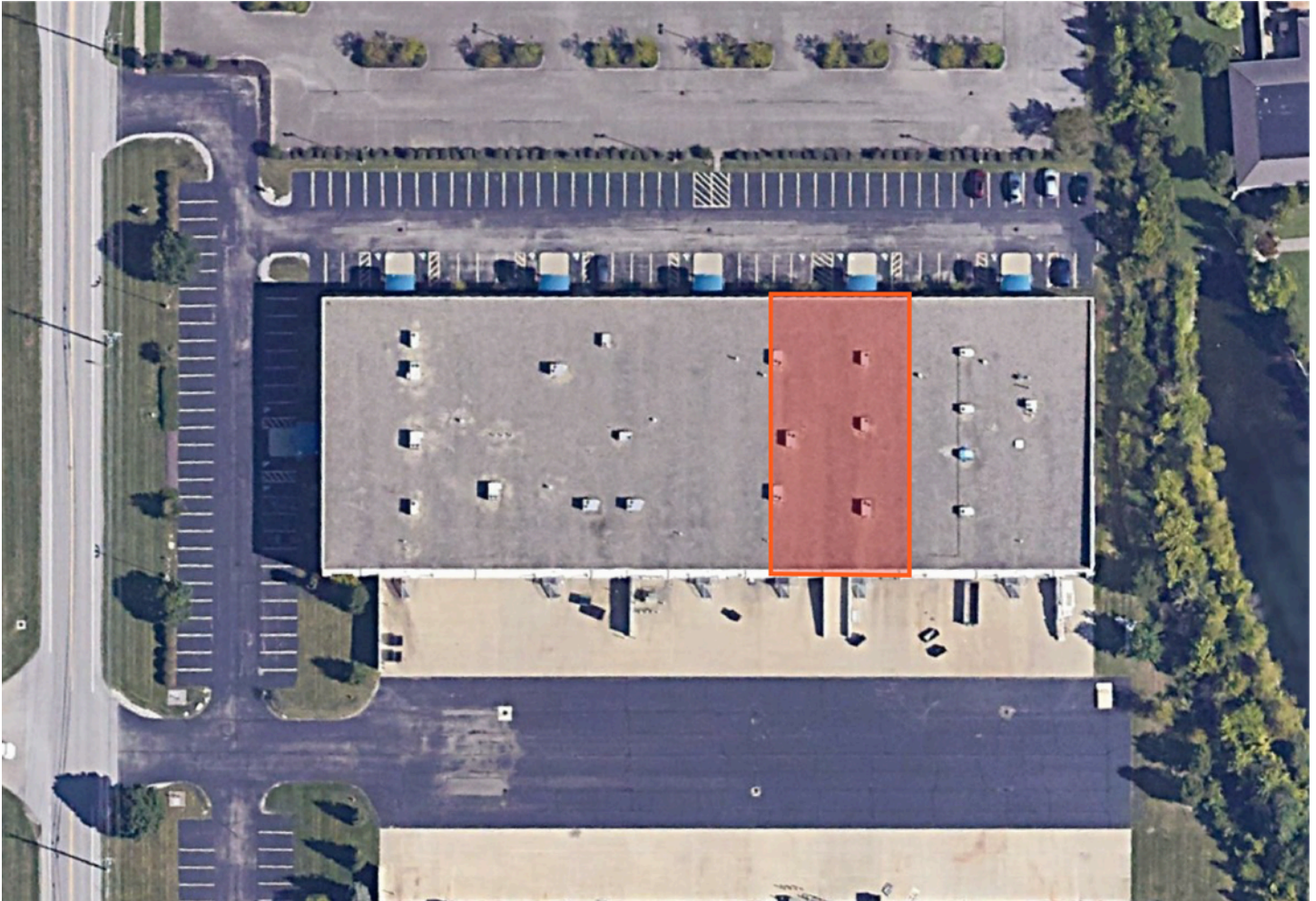
 **JLL** SEE A BRIGHTER WAY

For lease

19,361 SF Available
8808 - 8812 Beckett Rd.
West Chester, 45069

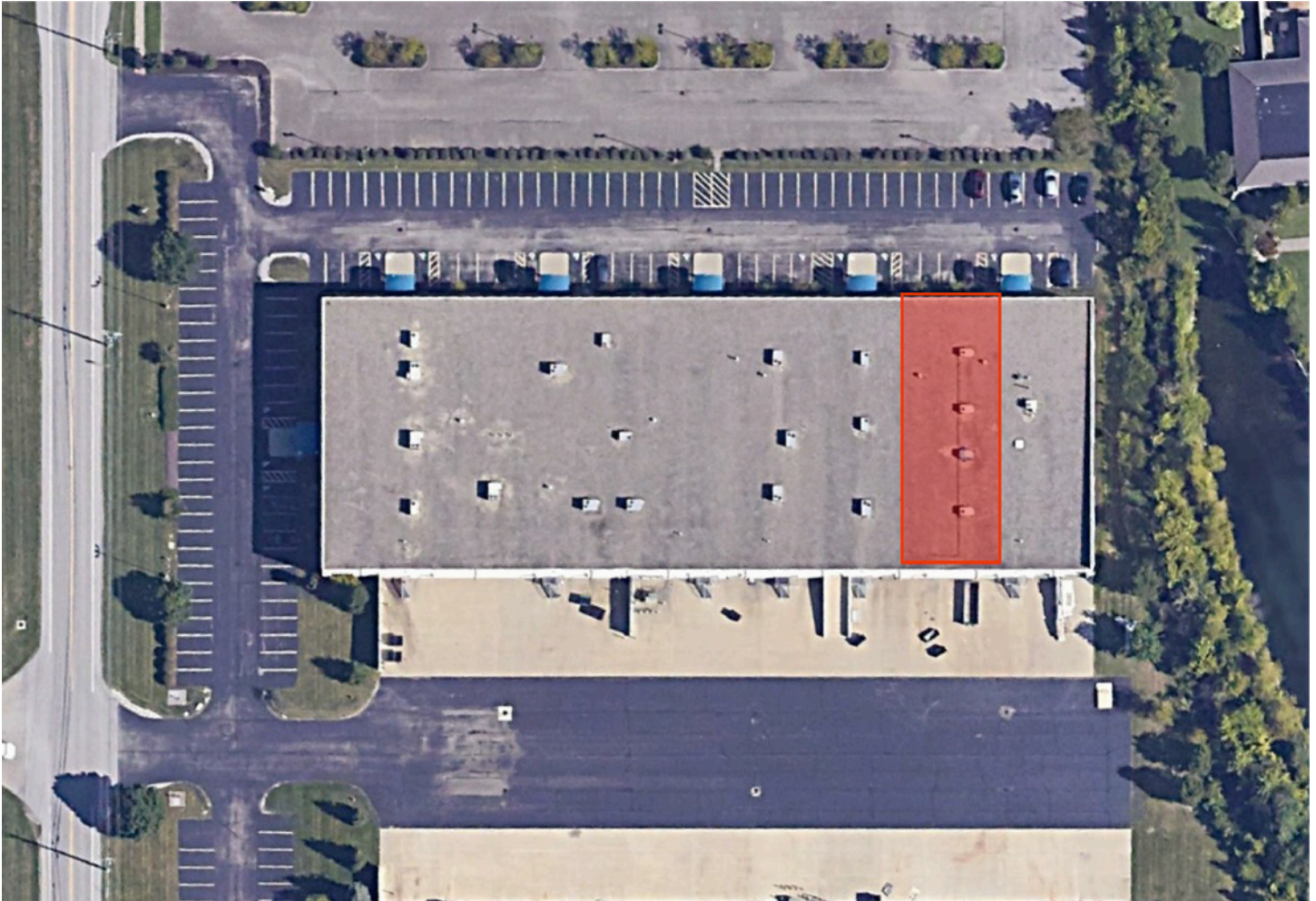
Mark Volkman
Senior Managing Director
+5132522123
mark.volkman@jll.com





Property Details - 8808 Beckett

Total SF:	8,132	Drive In:	One - 12' x 14'
Office SF:	2,450	Parcel ID:	M5610033000082
Acres:	3.72	Sprinkler:	Wet
Year built:	2005	Zoning:	M-2
Clear height:	20'	Lighting:	Energy efficient LED lighting
Power:	3 Phase/ 480V		
HVAC:	100%		
Docks:	Two exterior docks		



Property Details - 8810 Beckett

Total SF:	5,629	Drive In:	To suit
Office SF:	1,626	Parcel ID:	M5610033000082
Acres:	3.72	Sprinkler:	Wet
Year built:	2005	Zoning:	M-2
Clear height:	20'	Lighting:	Hi-Bay LED
Dimensions:	40' x 140'		
Power:	3 Phase/ 480V		
HVAC:	100%		
Docks:	One- 9' x 10'		



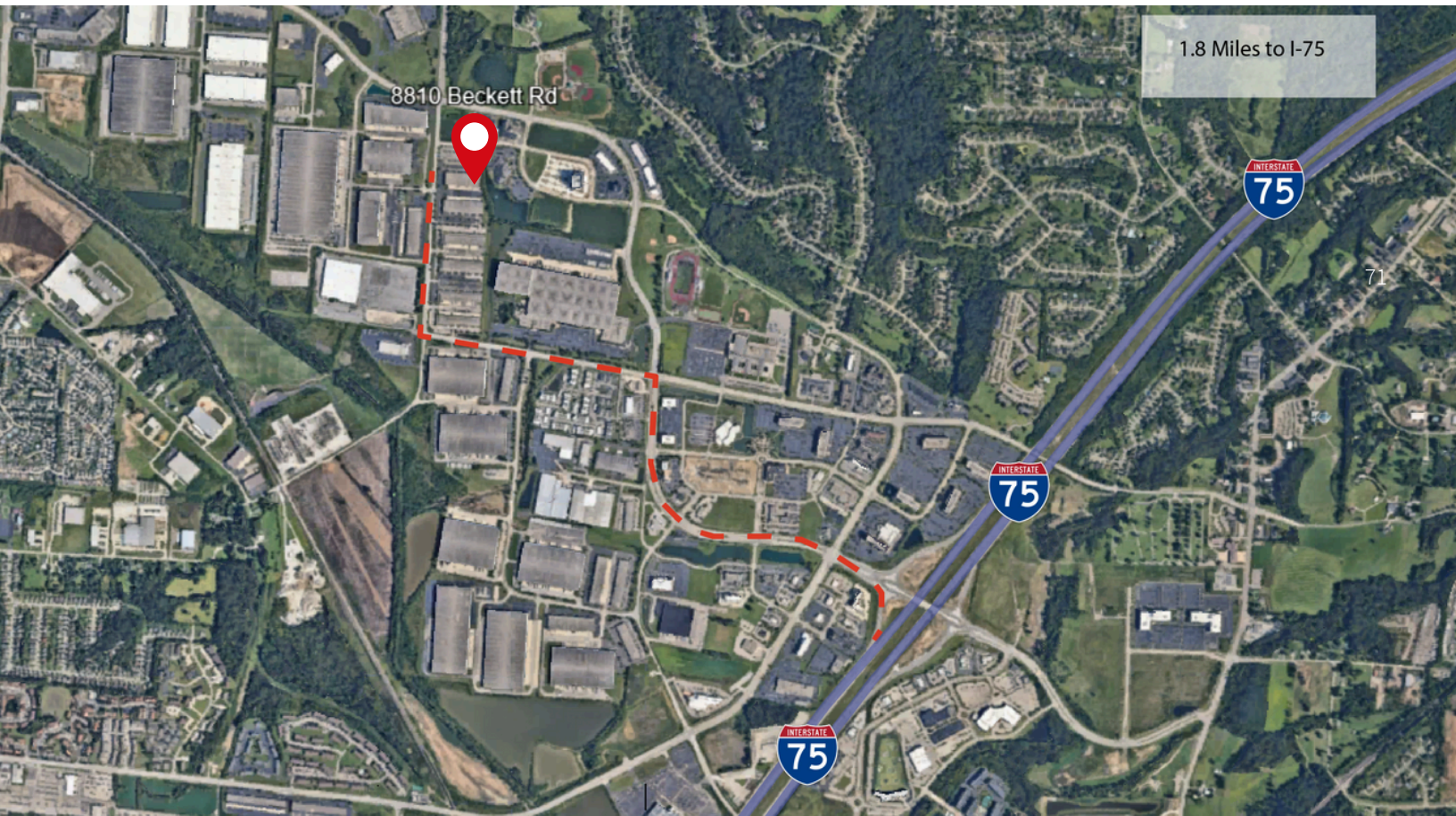
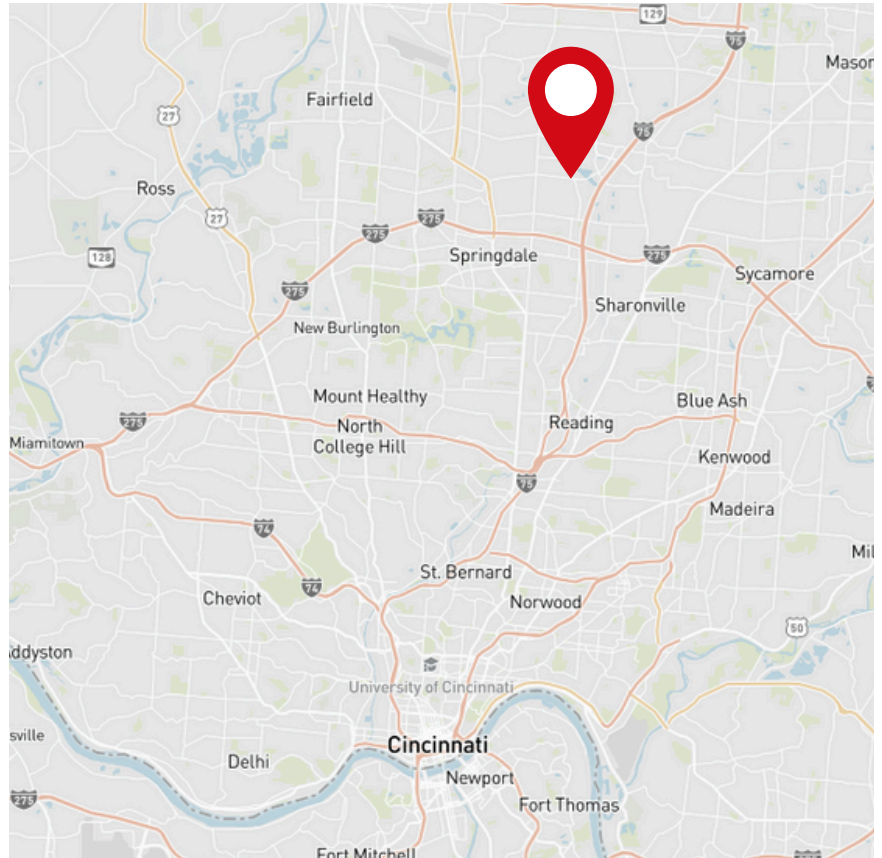
Property Details - 8812 Beckett

Total SF:	5,600	Drive In:	One - 12' x 14'
Office SF:	2,500	Parcel ID:	M5610033000082
Acres:	3.72	Sprinkler:	Wet
Year built:	2005	Zoning:	M-2
Clear height:	20'	Lighting:	Hi-Bay LED
Dimensions:	40' x 140'		
Power:	3 Phase/ 480V		
HVAC:	100%		
Docks:	One- 9' x 10'		

8808- 8812 Beckett Rd West Chester, 45069

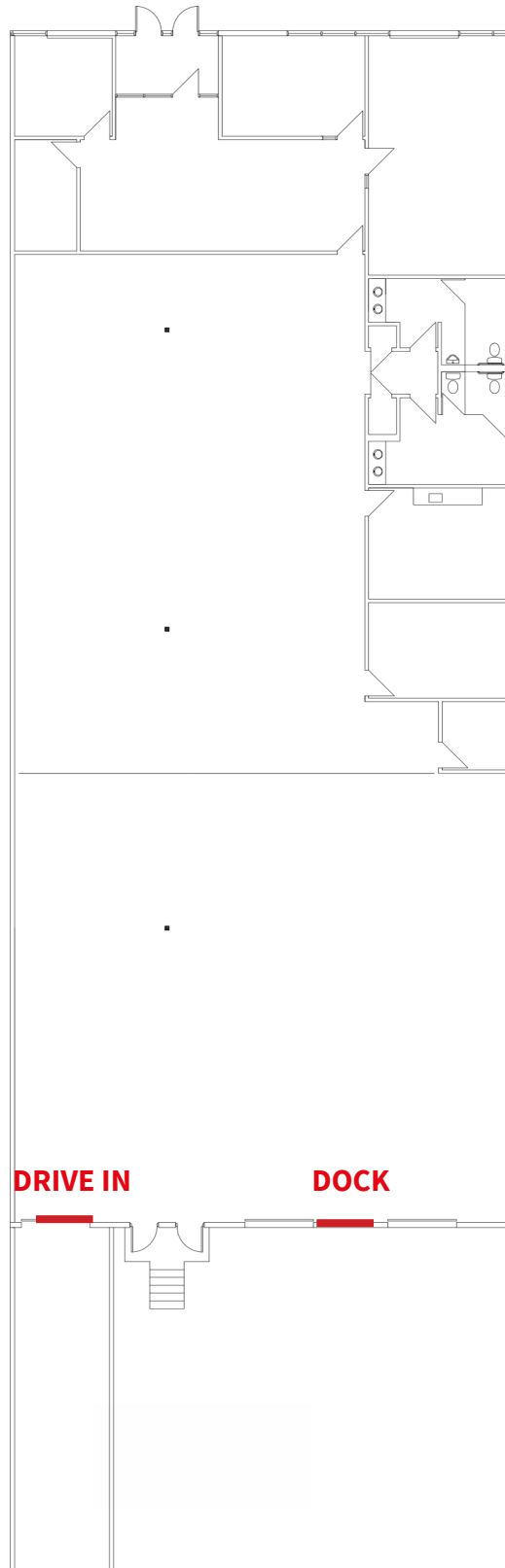
Location:

- 8808- 8812 Beckett Road is located in a 55,308 s.f. flex building in the heart of West Chester, Ohio.
- This convenient location has easy access to the Interstate and nearby amenities.



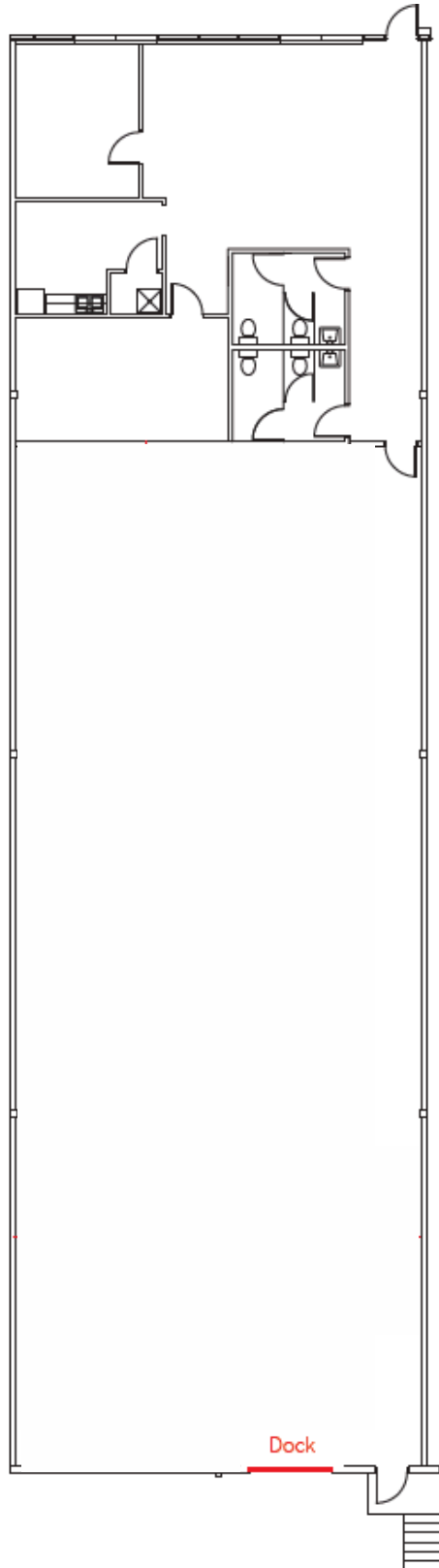
Space plan

8808 Beckett Rd
West Chester, 45069



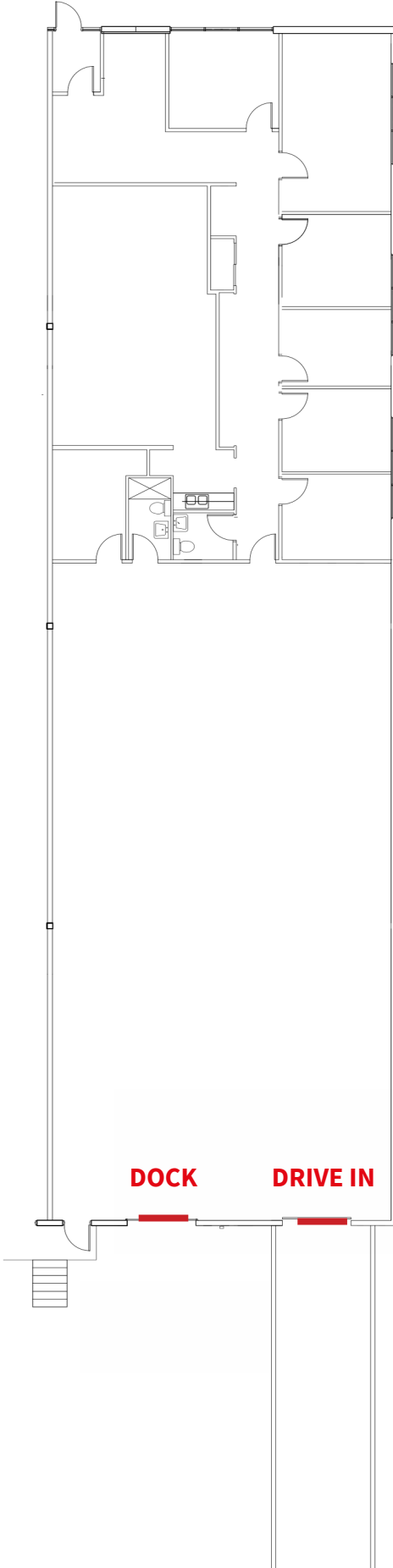
Space plan

8810 Beckett Rd
West Chester, 45069



Space plan

8812 Beckett Rd
West Chester, 45069



Space plan

8808-8812 Beckett Rd
West Chester, 45069

