

CUBEWORK



**5025 JENSEN DR.
HOUSTON TX 77003**

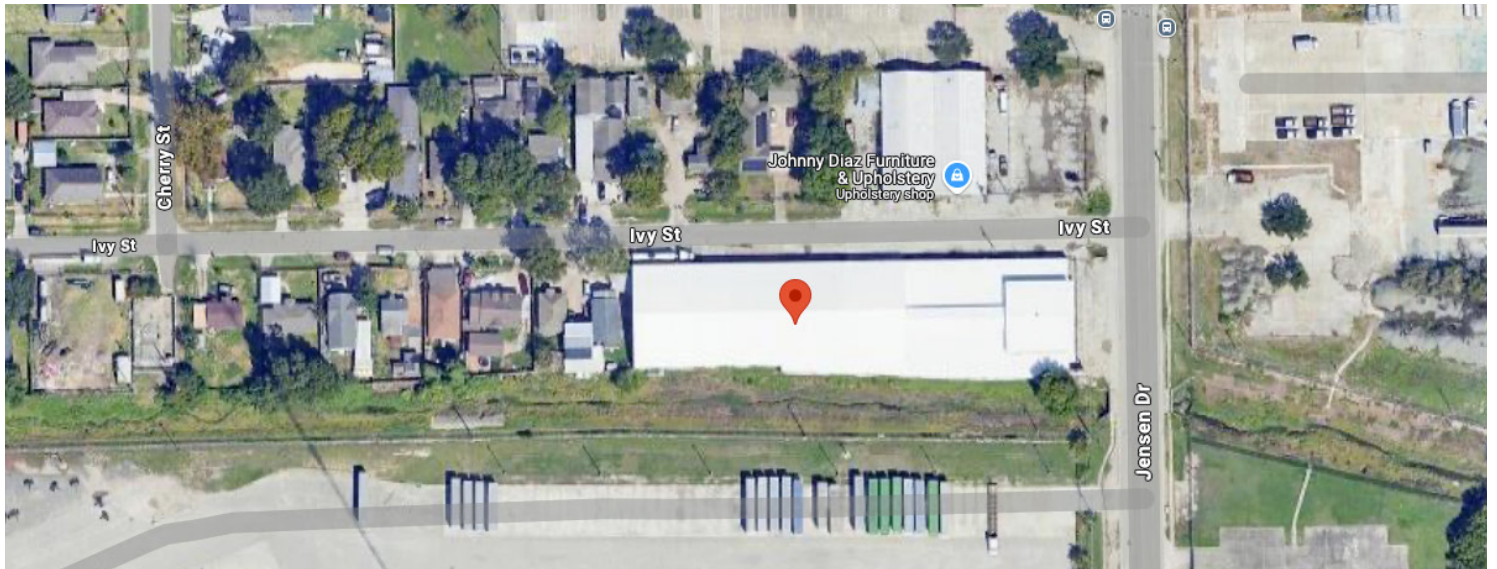
**FOR SALE/
LEASE**



**FLEX,
INDUSTRIAL**

CUBEWORK

📍 5025 Jensen Dr. Houston TX 77003



Property Highlights

- ✓ Building Type: Industrial
- ✓ RBA: 48,600 Square Feet
- ✓ Land/Site: 1.27 Acres
- ✓ Loading Docks: 2 int
- ✓ Ramps: 3
- ✓ Year Built: 1951
- ✓ Lease Price: \$0.35NNN
- ✓ Stories: 1
- ✓ Ceiling Clearance: 18'
- ✓ Construction: Masonry

For Sale/Lease, is a strategically positioned warehouse on the corner of Jensen Drive and Ivy Street. Located inside the 610 loop, 3.4 miles from Downtown Houston. This warehouse has 3 truck entrances, two grade level and one double wide truck well. Brand new roof replaced in 2023.

For Leasing/Sale Contact:

- 📞 Christine Wei (800) 338-6369
- ✉️ Christine.Weii@Cubework.com