



2365 Woodlake Dr

2365 Woodlake Drive
Okemos, Michigan 48864

Property Highlights

- Class A Office with several floor plans available
- Close proximity to restaurants, hotels and shopping
- Easy access I-96 & Okemos Road (behind the Cracker Barrel & Fairfield Inn)
- Flexible terms and ample onsite parking

Offering Summary

Lease Rate:	\$15.00 SF/yr (MG)
Building Size:	14,490 SF
Available SF:	1,186 - 14,490 SF

Spaces	Lease Rate	Space Size
Full Building	\$15.00 SF/yr	14,490 SF
Suite 100	\$15.00 SF/yr	3,243 SF
Suite 120	\$15.00 SF/yr	2,945 SF
Suite 140	\$15.00 SF/yr	1,186 SF
Suite 160	\$15.00 SF/yr	3,283 SF
Suite 180	\$15.00 SF/yr	2,968 SF

For More Information



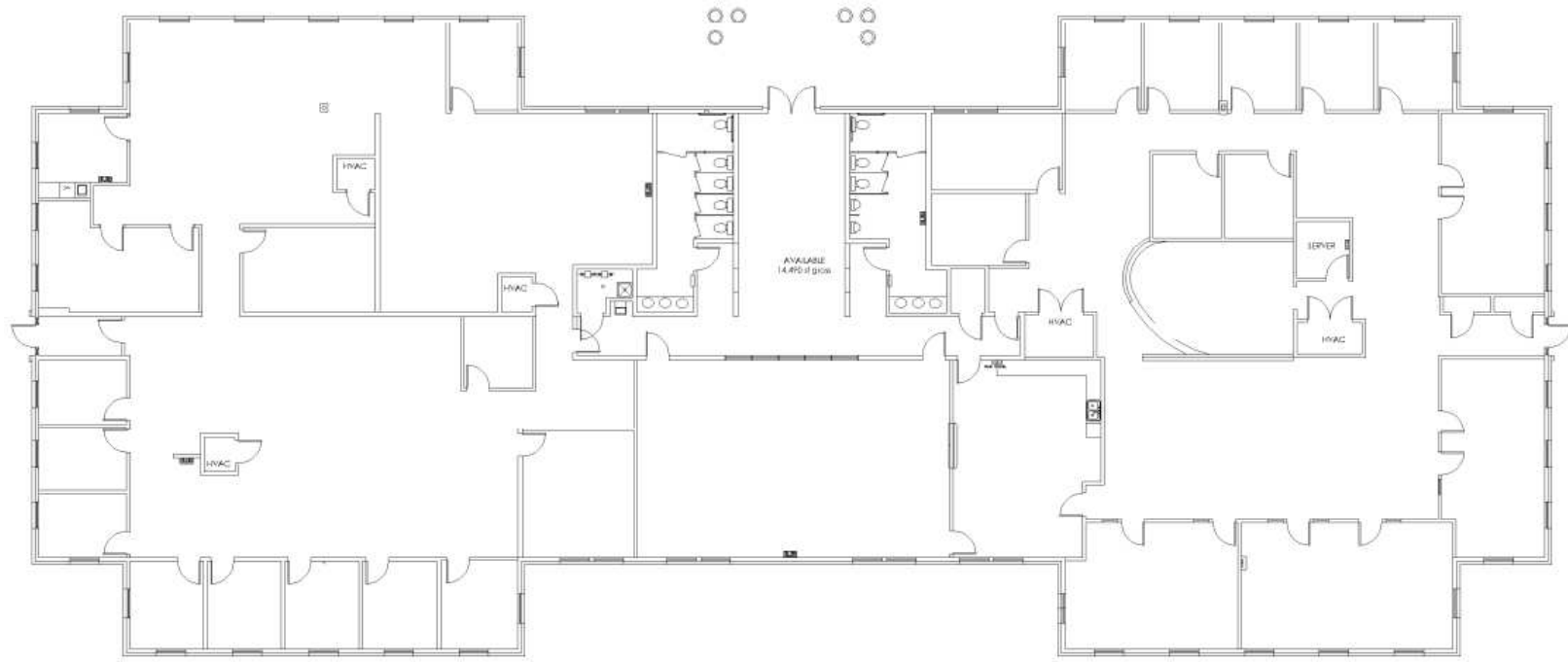
Jeffrey Branch

Associate Broker

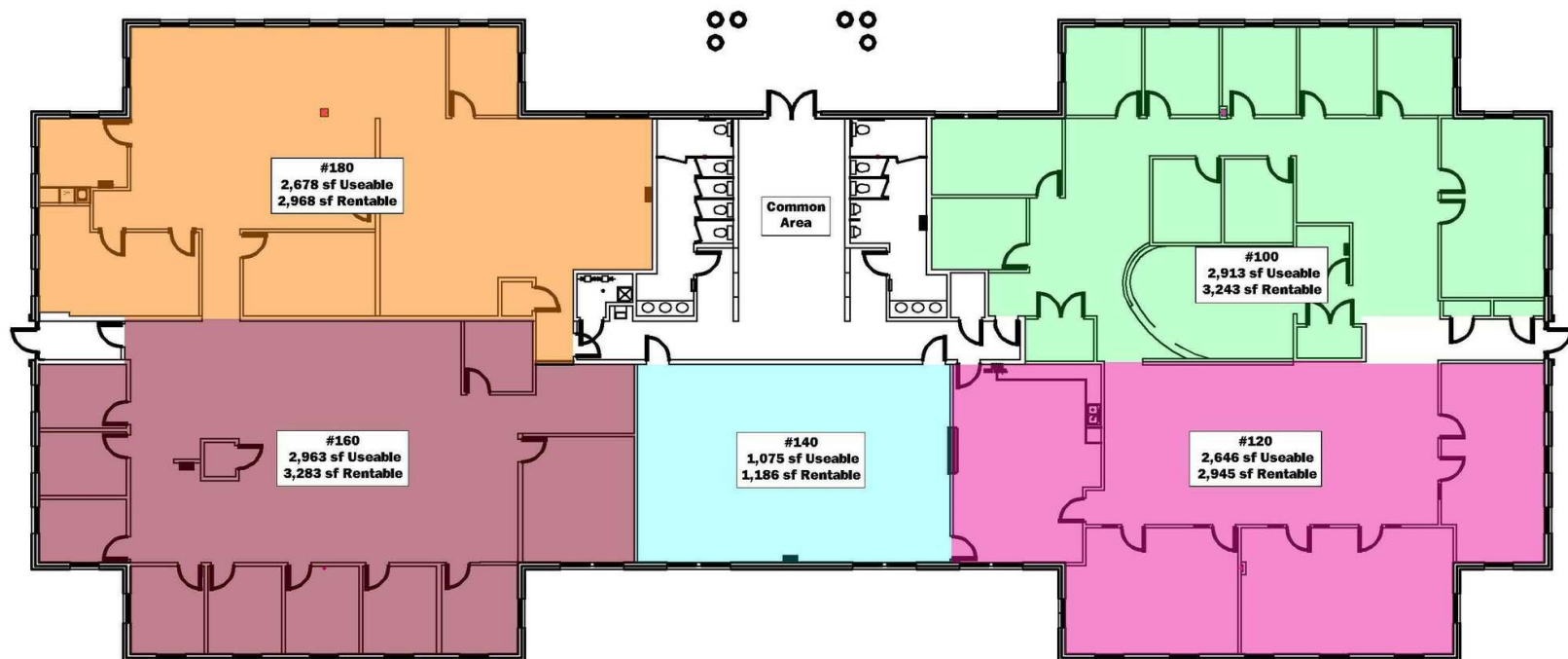
O: 517 487 9222 | C: 517 899 6368

jbranch@naimidmichigan.com

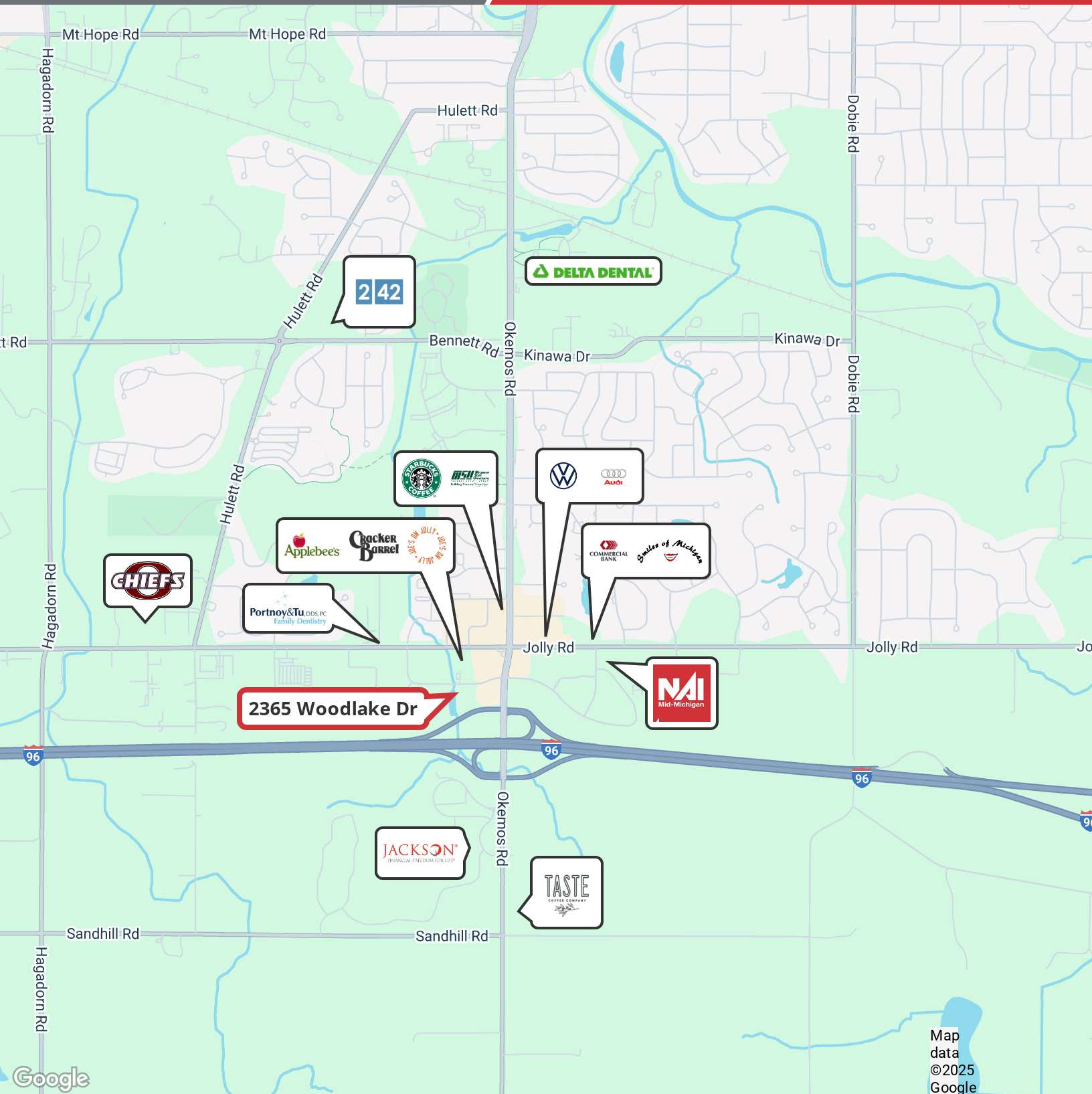


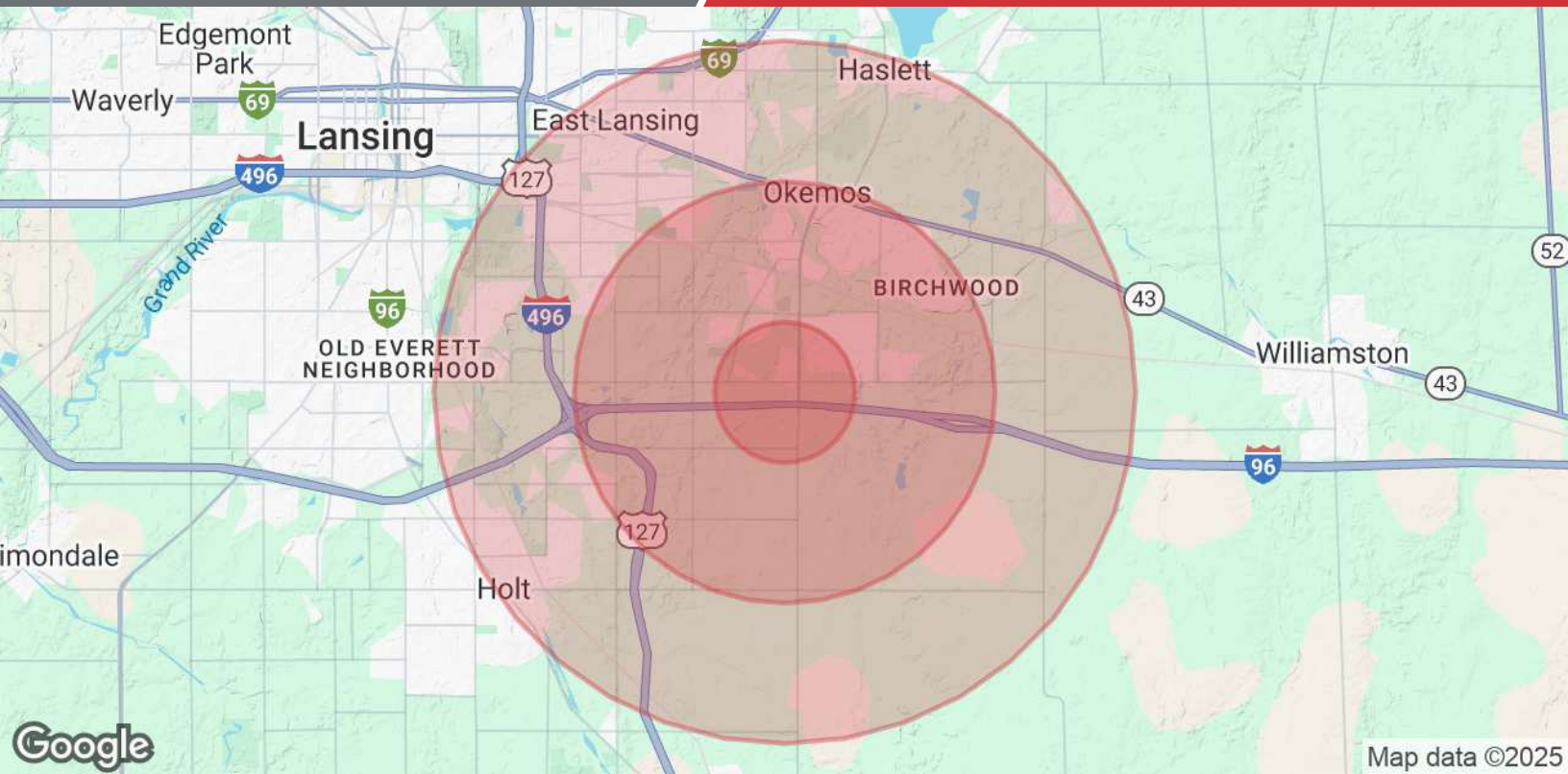


Full Building Floor Plan



Individual Suite Plans





Population	1 Mile	3 Miles	5 Miles
Total Population	4,036	22,537	94,925
Average Age	38	39	34
Average Age (Male)	37	38	34
Average Age (Female)	38	40	35
Households & Income	1 Mile	3 Miles	5 Miles
Total Households	1,569	8,984	35,026
# of Persons per HH	2.6	2.5	2.7
Average HH Income	\$134,858	\$130,338	\$94,024
Average House Value	\$411,319	\$366,667	\$252,435

Demographics data derived from AlphaMap