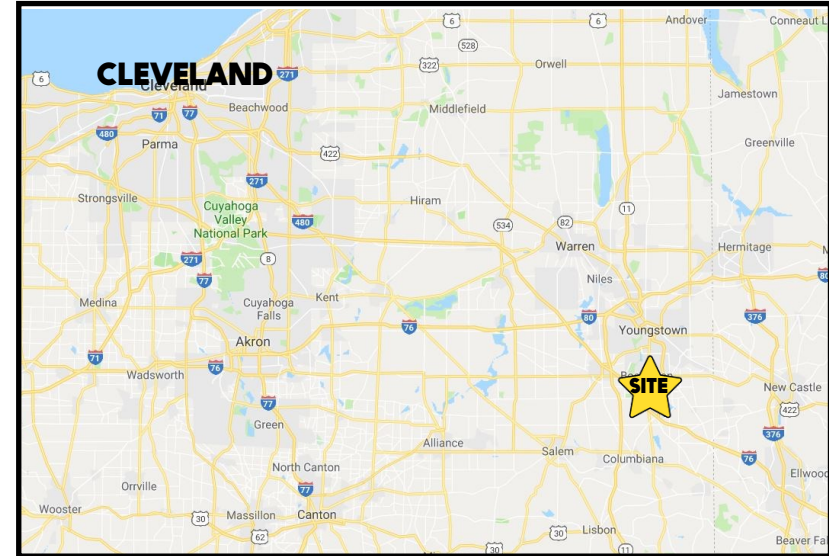


**LOCATION**

702 McClurg Rd, Boardman, OH 44512



**3D TOUR**

[702 McClurg](#)

**HIGHLIGHTS**

- Office / garage on McClurg Rd with 1 garage door
- Nicely updated offices
- Ample on-site parking
- By South Ave, Close to I-680/Western Reserve Rd
- Gross rent includes utilities

**CONTACT**

**DON THOMAS**

501.269.3827

[dthomas@platzrealtygroup.com](mailto:dthomas@platzrealtygroup.com)

Office: 330.757.4889 | Fax: 330.294.5622 | 3830 Starr Centre Dr, Suite 2, Canfield, OH 44406



Office: 330.757.4889 | Fax: 330.294.5622 | 3830 Starr Centre Dr, Suite 2, Canfield, OH 44406

**[www.PLATZREALTYGROUP.com](http://www.PLATZREALTYGROUP.com)**

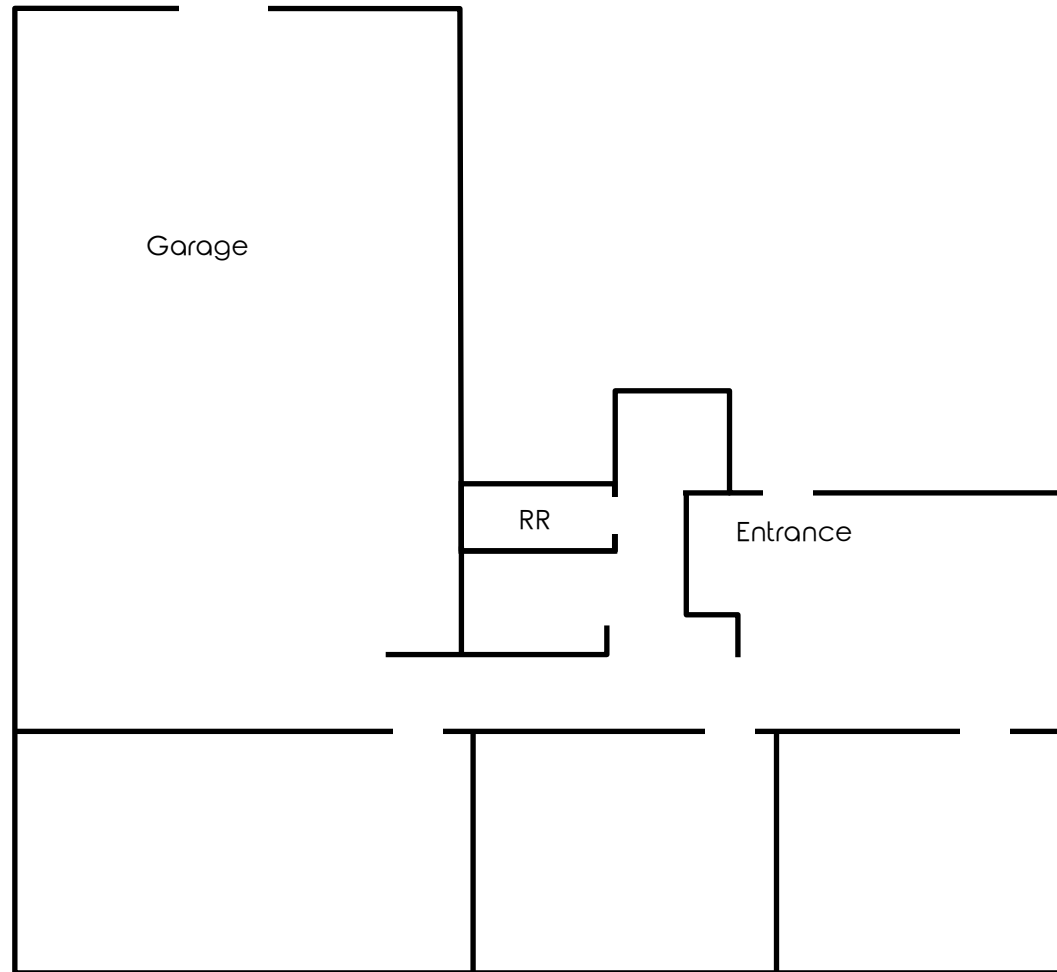
The information presented was obtained from sources believed to be true and reliable. The Platz Realty Group makes no warranties or guarantees to the accuracy of the information.



Office: 330.757.4889 | Fax: 330.294.5622 | 3830 Starr Centre Dr, Suite 2, Canfield, OH 44406

[www.PLATZREALTYGROUP.com](http://www.PLATZREALTYGROUP.com)

The information presented was obtained from sources believed to be true and reliable. The Platz Realty Group makes no warranties or guarantees to the accuracy of the information.



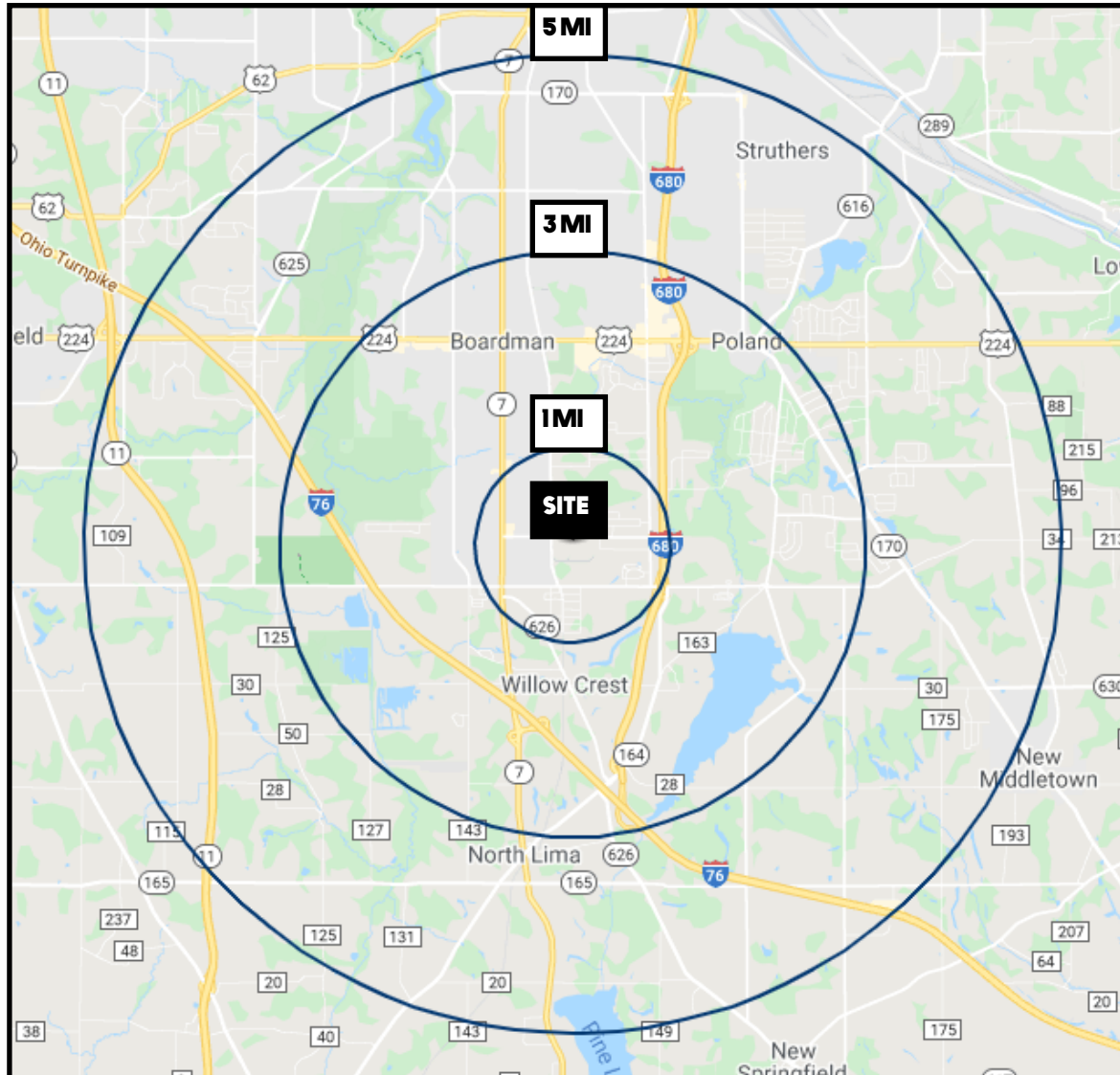
Office: 330.757.4889 | Fax: 330.294.5622 | 3830 Starr Centre Dr, Suite 2, Canfield, OH 44406

[www.PLATZREALTYGROUP.com](http://www.PLATZREALTYGROUP.com)



Office: 330.757.4889 | Fax: 330.294.5622 | 3830 Starr Centre Dr, Suite 2, Canfield, OH 44406

[www.PLATZREALTYGROUP.com](http://www.PLATZREALTYGROUP.com)



DEMOGRAPHICS	1 MI	3 MI	5 MI
<b>POPULATION</b>	2,699	26,641	80,437
<b>HOUSEHOLDS</b>	1,253	11,553	33,978
<b>MEDIAN AGE</b>	53	48	45
<b>AVERAGE HH INCOME</b>	\$69,190	\$82,976	\$77,357

**SITE INFORMATION**

<b>LOCATION</b>	Boardman Township Mahoning County
<b>YEAR BUILT</b>	1977
<b>SIZE</b>	Office: 909 SF Warehouse: 816 SF Total: 1,725 SF
<b>DOORS</b>	1 drive-in / garage door
<b>UTILITIES</b>	Included in rent
<b>GROSS RENT</b>	\$1,600/month

Office: 330.757.4889 | Fax: 330.294.5622 | 3830 Starr Centre Dr, Suite 2, Canfield, OH 44406

[www.PLATZREALTYGROUP.com](http://www.PLATZREALTYGROUP.com)