

FOR SALE or LEASE

# SHOWROOM & BISTRO

1638 W English St, High Point, NC 27262

~ 13,437 sft



*This Free Standing High Point showroom is in **beautiful condition** and offers a manageable amount of open space coupled with a full kitchen and dining bistro to pamper guests while they browse.*

*The location is a short 1 mile to Furniture Market as seen on the following aerial map.*

**Built:** 1986 **Improved:** 2007

**Zoned:** GB

**Size:** 13,437 sqft

**Parking:** 12 on site spaces

**Roof:** Rubber membrane and composite

**Land:** .73 Acre

**Taxes:** \$3,887



Brian Burnham | Listing Agent  
Cell: (336) 362-5612  
BrianBurnhamCommercial@gmail

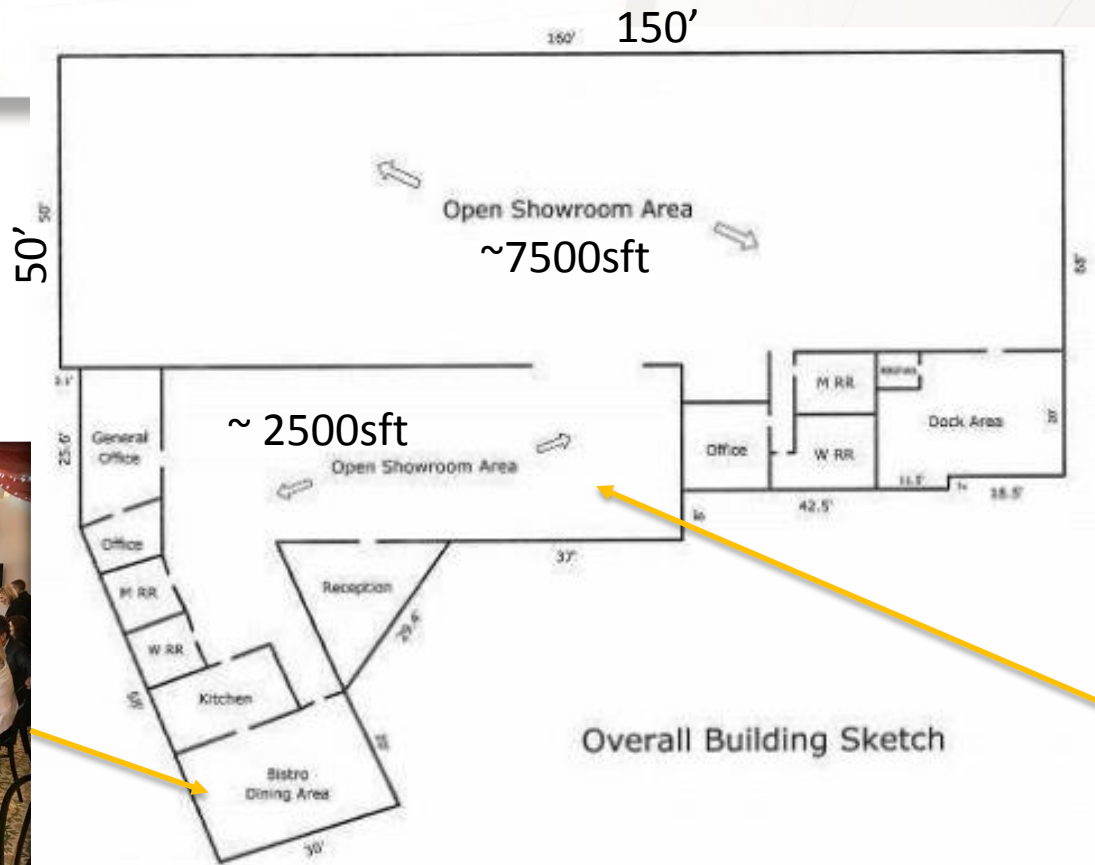
**FOR SALE: \$1,200,000**



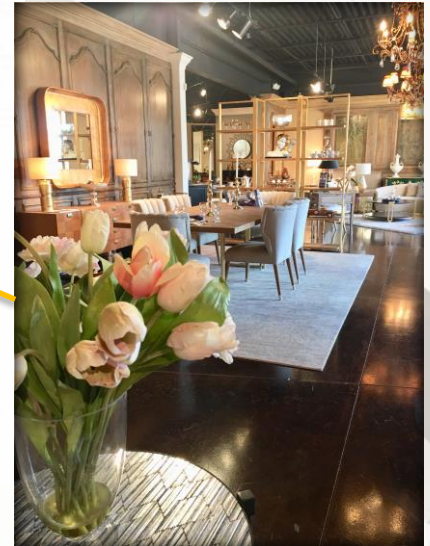
# Furniture Market District – Aerial view from the site



# Floor Sketch



## KITCHEN & BISTRO



Brian Burnham | Broker

RE/MAX Realty Consultants Commercial Division

Cell: (336) 362-5612



# THE NEARBY COHAB SPACE – coming to life, up the street

COHAB will quickly evolve in phases transforming the entirety of the former Melrose Mill



Samsel Architects, P.A.  
60 Biltmore Avenue  
Asheville, NC 28801  
Suite 240  
P 828.253.1124  
F 828.254.7316

Apartments, design studios, and exhibition spaces will be available as early as Spring of 2019.



A Better Way in  
Commercial Real Estate

# Additional Photos

