



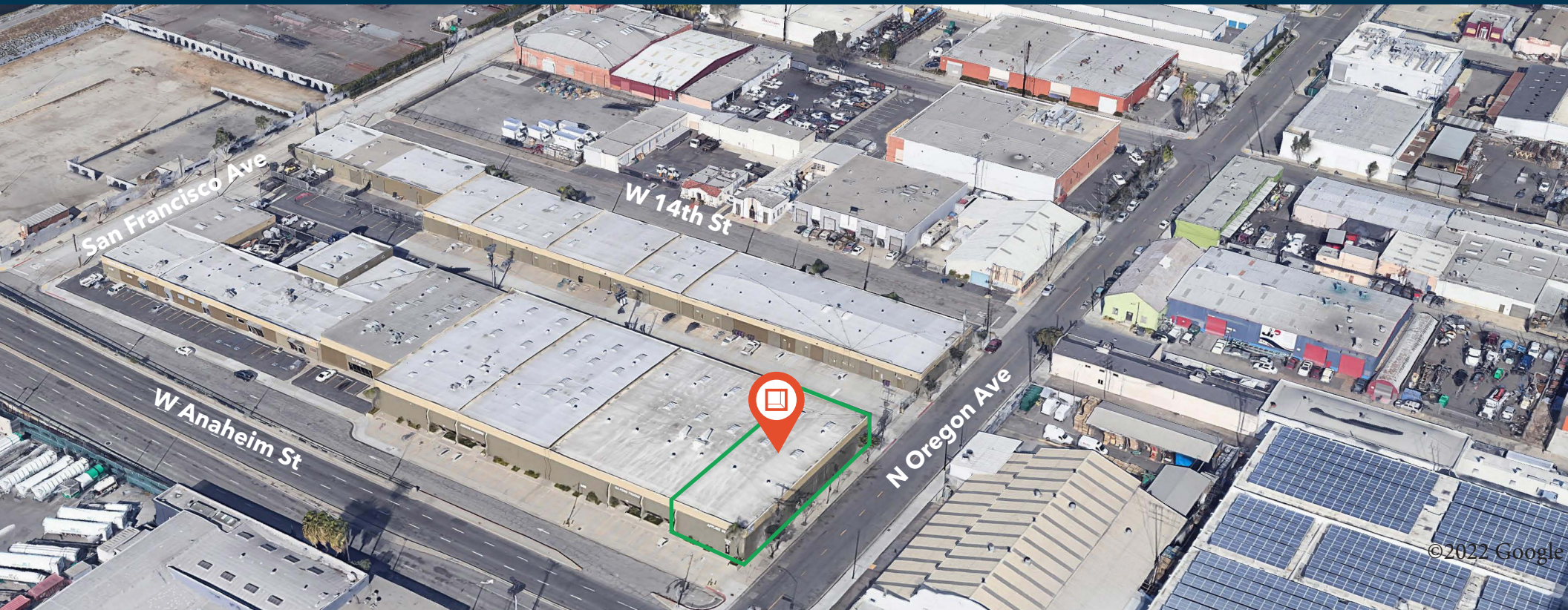
APPLIED INDUSTRIAL

Shipping &
Receiving
701

±10,162 SF AVAILABLE FOR LEASE

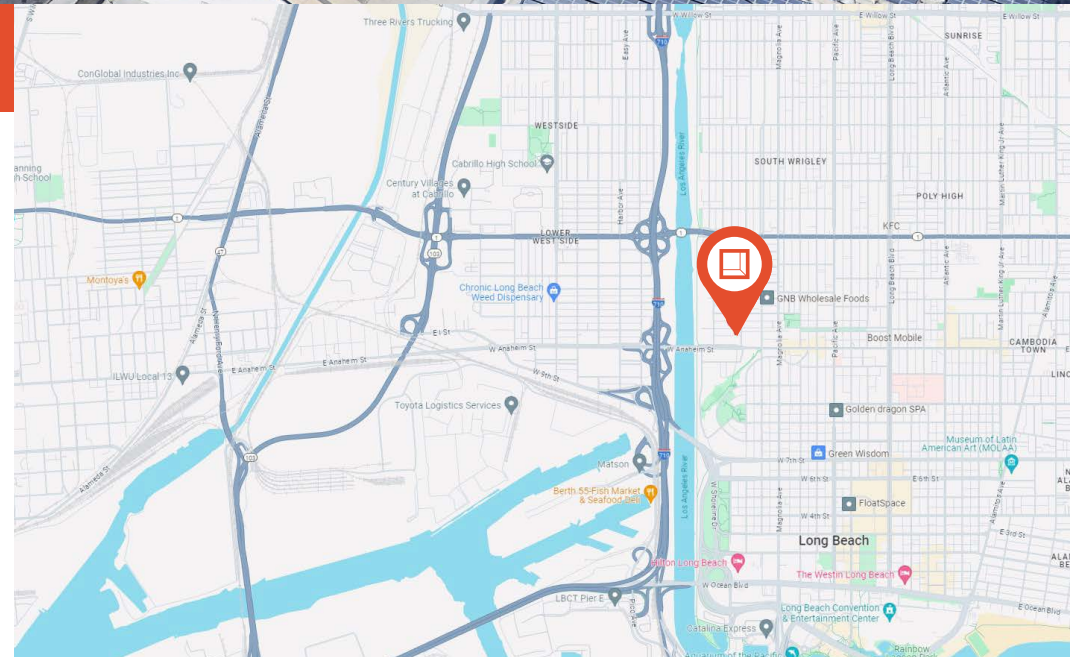
Long Beach Business Park

701 W Anaheim St, Long Beach, CA 90813

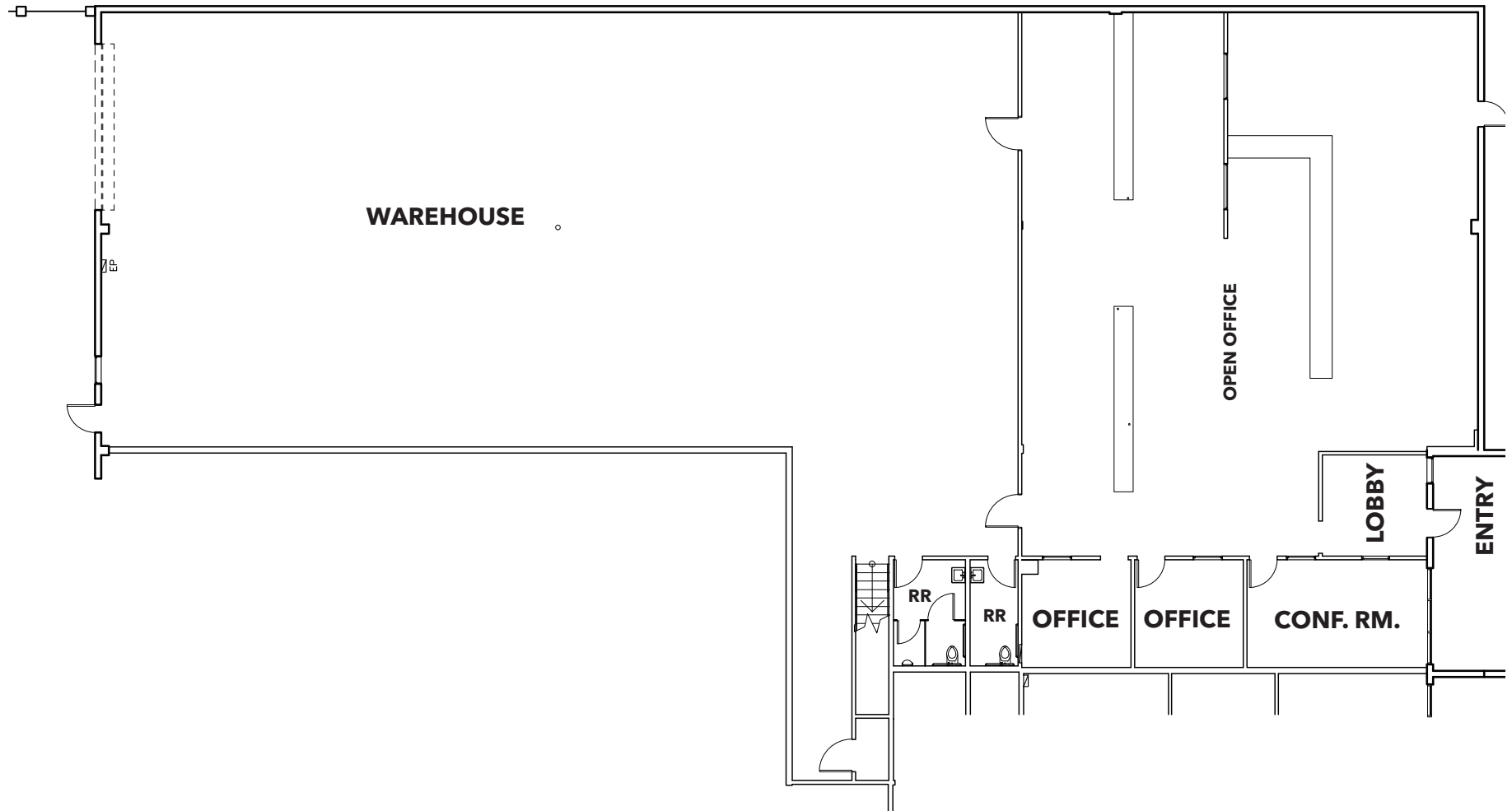


PROPERTY HIGHLIGHTS

- Rate: \$1.20 / SF MG (\$12,194/mo) + \$0.14 / SF CAM (\$1,422/mo)
- Available Size: ±10,162 SF
- Professionally Managed and Maintained Business Park
- Oversized Ground Level Roll Up Door (14' x 14')
- 21' Warehouse Ceiling Height with 400 AMPS
- 2 Offices, Conf Room and Open Bullpen Area
- Immediate Access to LB/ LA Ports







AVAILABLE

±10,162 SF

PLAN LAYOUT SUBJECT TO FIELD CONDITIONS AND MAY DIFFER FROM PLAN AS SHOWN. ALL INFORMATION PRESENTED ON THIS DRAWING IS PRESUMED TO BE ACCURATE, HOWEVER TENANT SHOULD VERIFY PERTINENT INFORMATION PRIOR TO COMMITTING TO A LEASE. ANY FURNITURE OR APPLIANCES SHOWN ON PLAN ARE FOR CONCEPT ONLY AND WILL BE TENANT PROVIDED.



Leasing Contacts

Maximillian Ceseña Robles

Senior Associate
562.354.2531
mrobles@leelalb.com
DRE# 02057317

Garrett Massaro

Principal
562.354.2516
gmassaro@leelalb.com
DRE# 01771471

Brandon Carrillo

Principal
562.354.2510
bcarrillo@leelalb.com
DRE# 01745362

Lee & Associates Los Angeles - Long Beach, Inc.

5000 E Spring Street, Suite 600,
Long Beach, CA 90815
562.354.2500
lee-associates.com

Copyright © Lee & Associates. All rights reserved. No part of this work may be reproduced or distributed without written permission of the copyright owner. The information contained in this report was gathered by Lee & Associates from sources believed to be reliable. Lee & Associates, however, makes no representation concerning the accuracy or completeness of such information and expressly disclaims any responsibility for any inaccuracy contained herein. 12.19.23