

FOR LEASE

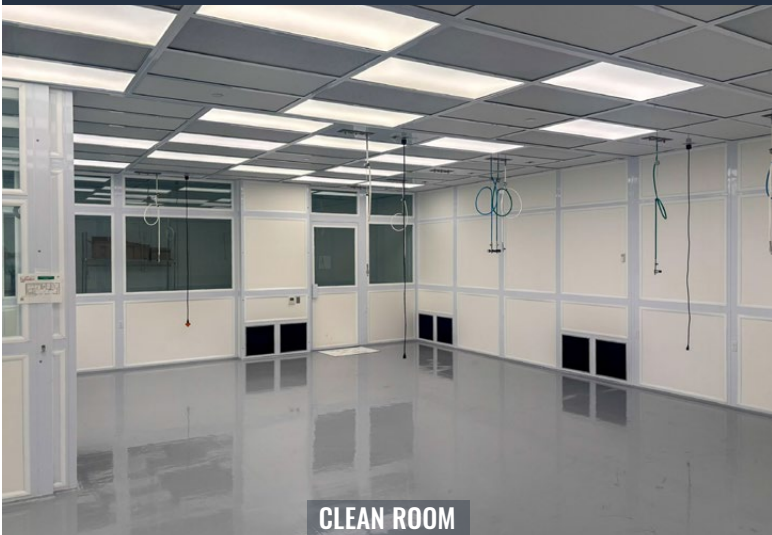
**Light Industrial / R&D Building
Featuring Clean Room & Office**

12,580 SF | \$1.75/SF/MO. NNN

20706 High Desert Ln., Bend, OR 97701



CLEAN ROOM, LAB, AND OFFICE SPACE IN NORTH BRINSON BUSINESS PARK



CLEAN ROOM



CONFERENCE ROOM

Bruce Churchill, Principal Broker

600 SW Columbia St., Ste. 6100 | Bend, OR 97702

541.383.2444 | www.CompassCommercial.com

COMPASS
COMMERCIAL

**REAL
ESTATE
SERVICES**

FOR LEASE

\$1.75/SF/MO. NNN

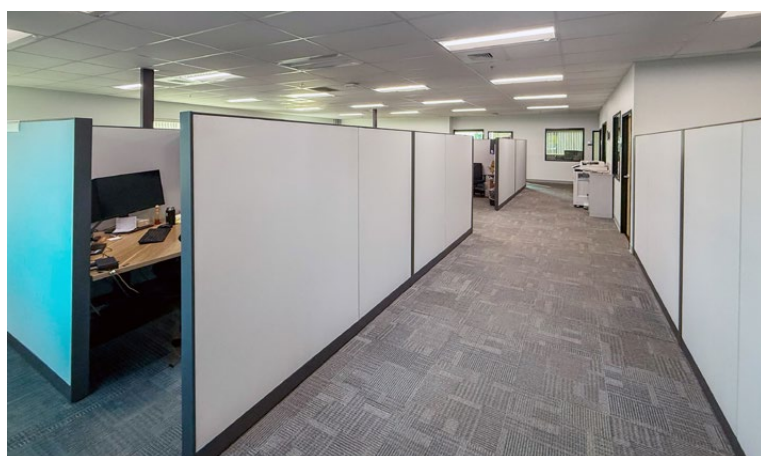
Light Industrial / R&D Building Featuring Clean Room & Office

PROPERTY DETAILS

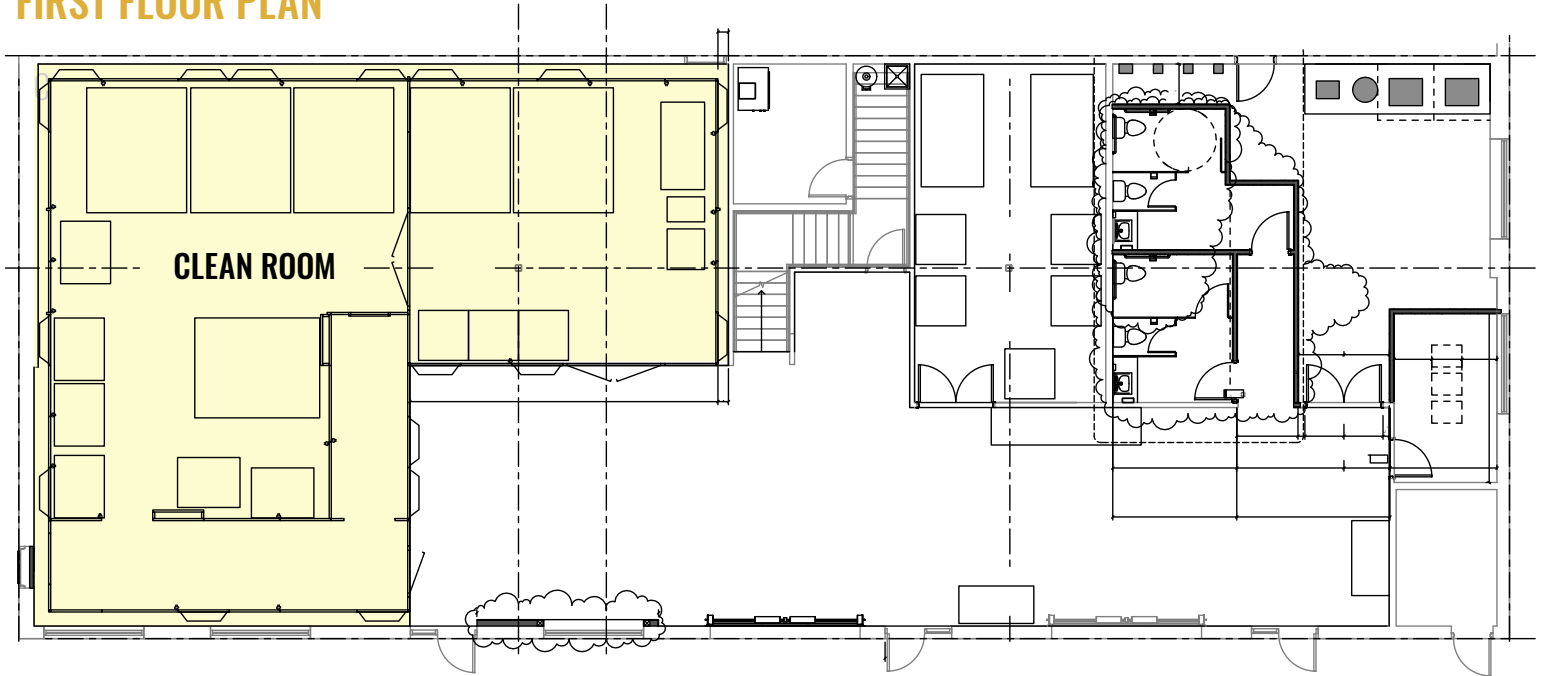
- Avail. Space:** 12,580 SF
- Lease Rate:** \$1.75/SF/Mo. NNN
- NNNs:** Est. at \$0.40/SF/Mo.
- Year Built:** 2014
- Zoning:** Light Industrial (IL)
- Parking:** 45 onsite spaces
- Ideal Uses:** Suitable for biotech and medical device startups, semiconductor and optics firms, aerospace and defense contractors, pharmaceutical and compounding labs, R&D labs, and 3D printing or advanced materials innovators.

HIGHLIGHTS

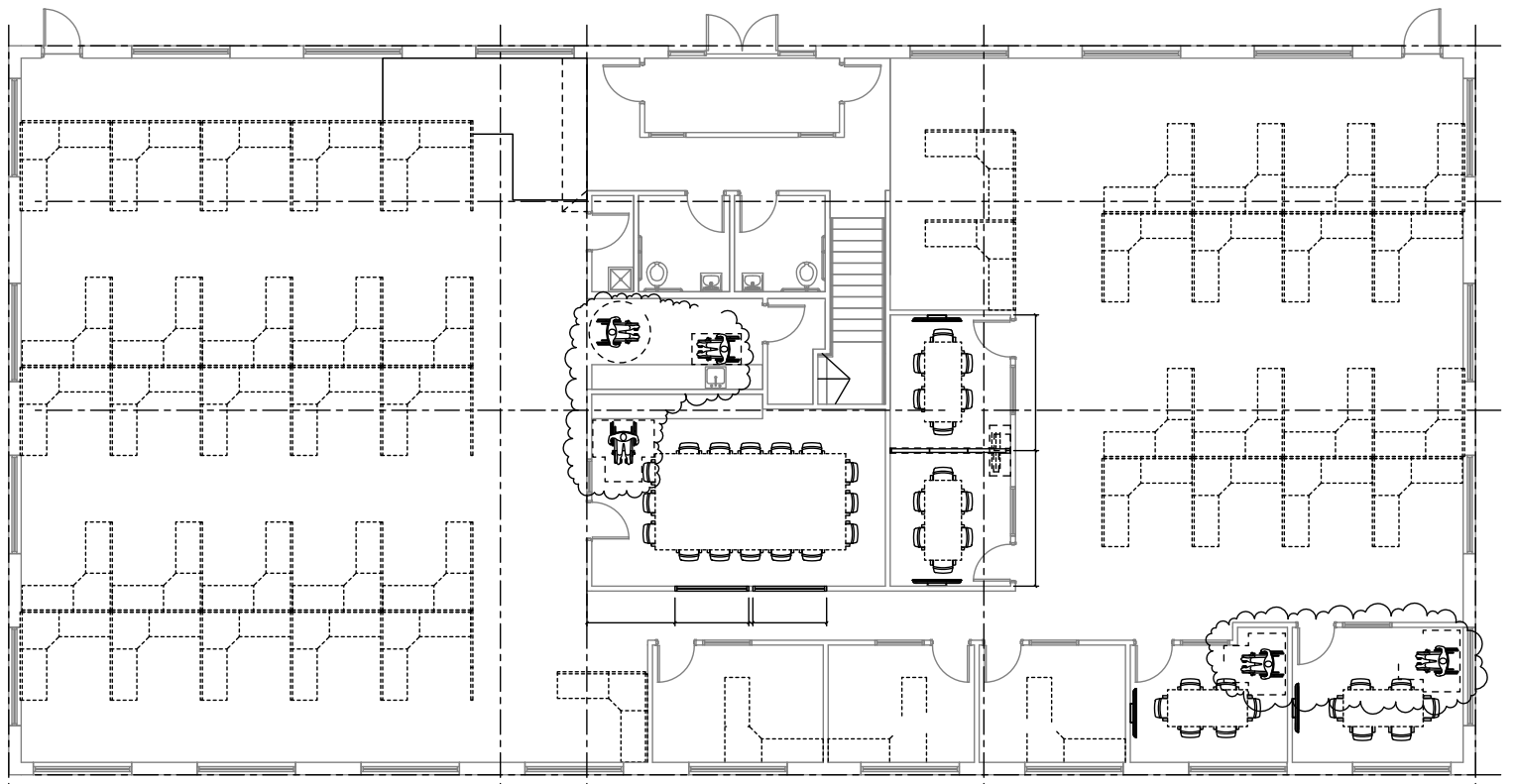
- Two-story light industrial building with clean room and full office buildout
- Ideal for biotech, semiconductor, aerospace, or advanced materials users
- First floor includes lab/production area, clean room (see highlighted area on floor plan), and a warehouse/receiving area with two roll-up doors
- Second floor features five offices, three large conference rooms, two large open office areas, and a break area
- Located within North Brinson Business Park
- Entire building (12,580 SF) to be leased as one unit



FIRST FLOOR PLAN

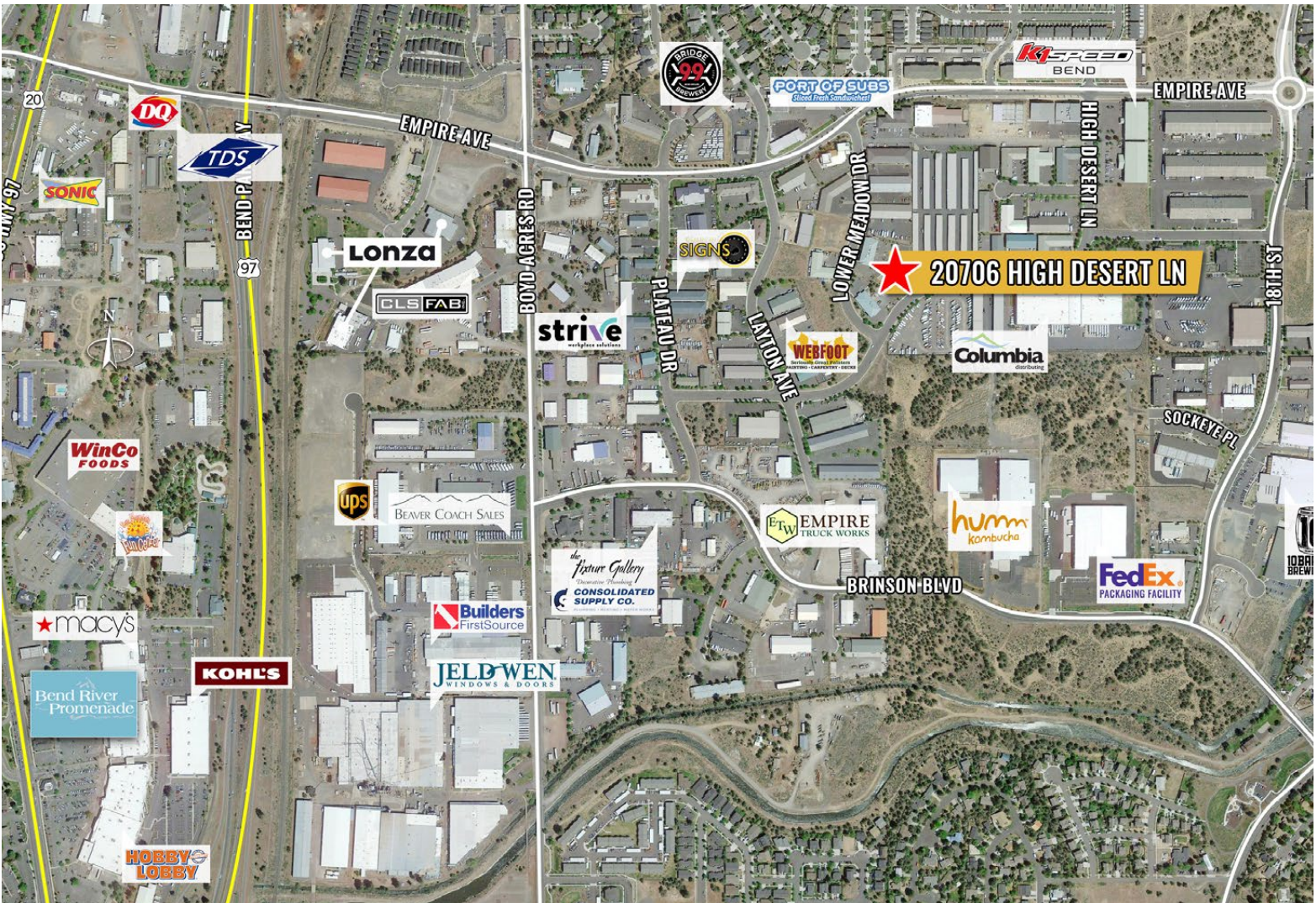


SECOND FLOOR PLAN



FOR LEASE

20706 High Desert Ln., Bend, OR 97701



Broker is licensed in the state of Oregon. This information has been furnished from sources we deem reliable, but for which we assume no liability. This is an exclusive listing. The information contained herein is given in confidence with the understanding that all negotiations pertaining to this property be handled through Compass Commercial Real Estate Services. All measurements are approximate.



Bruce Churchill
Principal Broker
Cell 541.280.7560
bchurchill@compasscommercial.com

COMPASS COMMERCIAL **REAL ESTATE SERVICES**