

**2439 Country Place Blvd., New Port Richey, FL 34655**



### **Medical Office Middle Unit**

#### **Property Highlights**

- Reception (check-in and check-out area)
- Waiting area
- 4 Exam rooms with plumbing
- 1 office
- 2 restrooms
- Break room and kitchen
- Server room
- Signage on SR 54



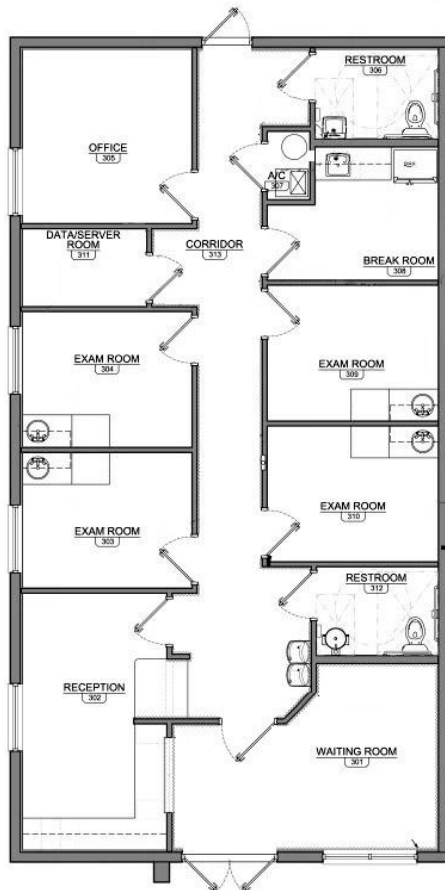
#### **FOR MORE INFORMATION CONTACT**

**Nathan Gennara, MBA**  
Off 813.242.6464 Ext 24  
Cel 813.334.6455 (Main)  
[nathan@alcommercialinc.com](mailto:nathan@alcommercialinc.com)  
[www.alcommercialinc.com](http://www.alcommercialinc.com)

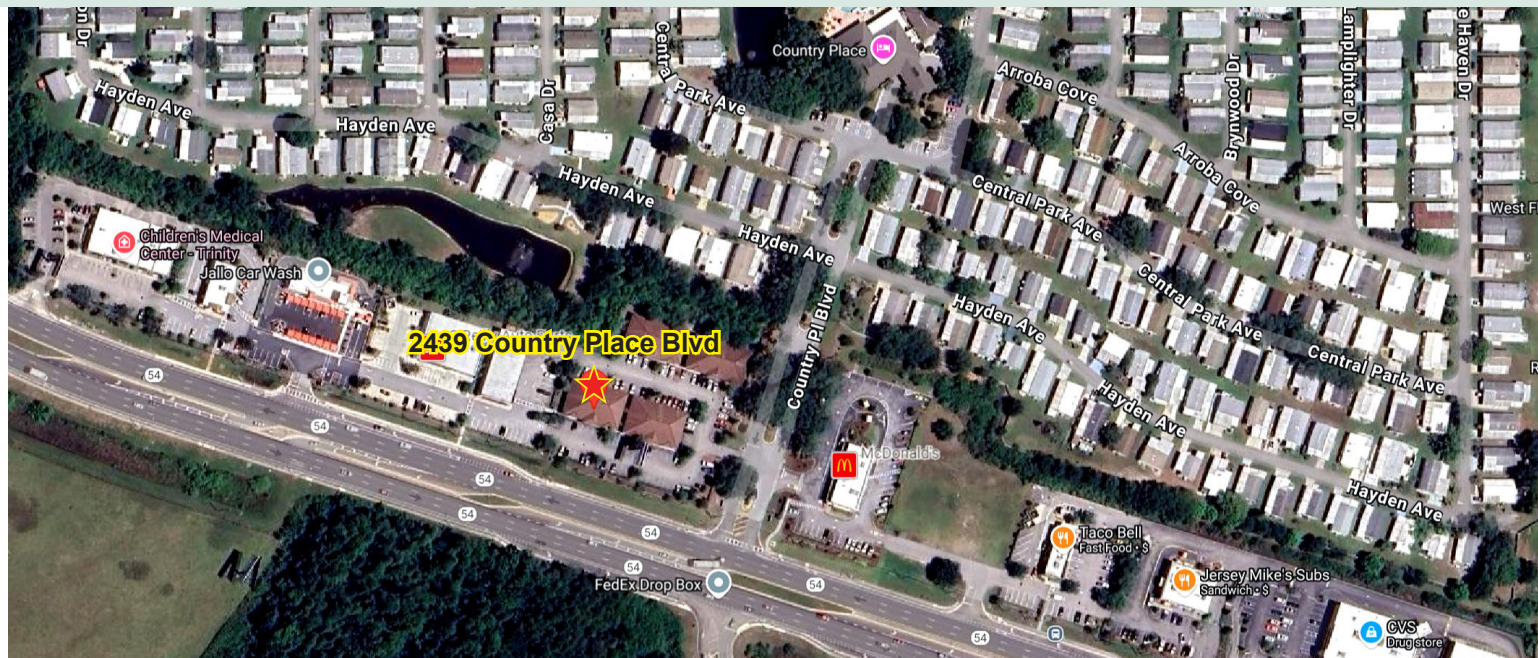


# 2439 Country Place Blvd., New Port Richey, FL 34655

## Floor Plan



## Map



### FOR MORE INFORMATION CONTACT

**Nathan Gennara, MBA**  
Off 813.242.6464 Ext 24  
Cel 813.334.6455 (Main)  
[nathan@alcommercialinc.com](mailto:nathan@alcommercialinc.com)  
[www.alcommercialinc.com](http://www.alcommercialinc.com)

