

# 20,441 SF OFFICE SPACE FOR SUBLEASE ROOSEVELT TECHNOLOGY CENTER

11399 16TH CT. N. SUITES 100 & 106, ST. PETERSBURG, FL 33716

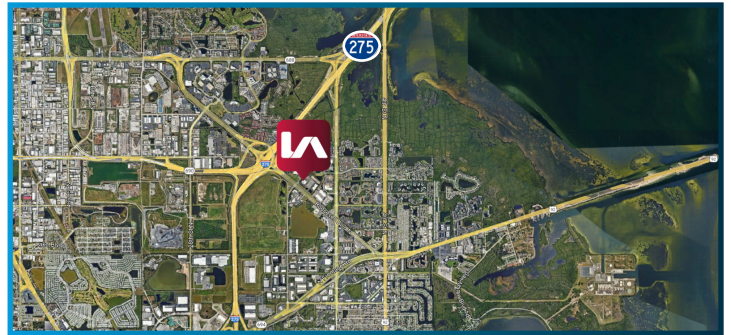


COMMERCIAL REAL ESTATE SERVICES  
TAMPA BAY



## LISTING DATA - FOR SUBLEASE

<b>AVAILABLE SF:</b>	Up to 20,441 SF
<b>RATE:</b>	\$22.00/SF Gross
<b>EXPIRATION:</b>	9/1/2028
<b>AVAILABILITY:</b>	Now
<b>FURNISHING:</b>	Can be leased furnished or unfurnished
<b>PARKING:</b>	8-10 unassigned spaces - Reserved spaces at additional \$35/space/month charge EV charging stations on site
<b>BUILDING ACCESS:</b>	Card key controlled building access, cards to be provided by Master Tenant
<b>OTHER INFO:</b>	Sublease inclusive of trash removal, water, electricity/lighting, subtenant is responsible for all telecommunication (telephone/internet) services.



Jessica Mizrahi, SIOR  
jmizrahi@lee-associates.com  
D 813.804.0886

Ben Ewers  
bewers@lee-associates.com  
D 352.362.8535



All information furnished regarding property for sale, rental or financing is from sources deemed reliable, but no warranty or representation is made to the accuracy thereof and same is submitted to errors, omissions, change of price, rental or other conditions prior to sale, lease or financing or withdrawal without notice. No liability of any kind is to be imposed on the broker herein.

# 20,441 SF OFFICE SPACE FOR SUBLEASE ROOSEVELT TECHNOLOGY CENTER

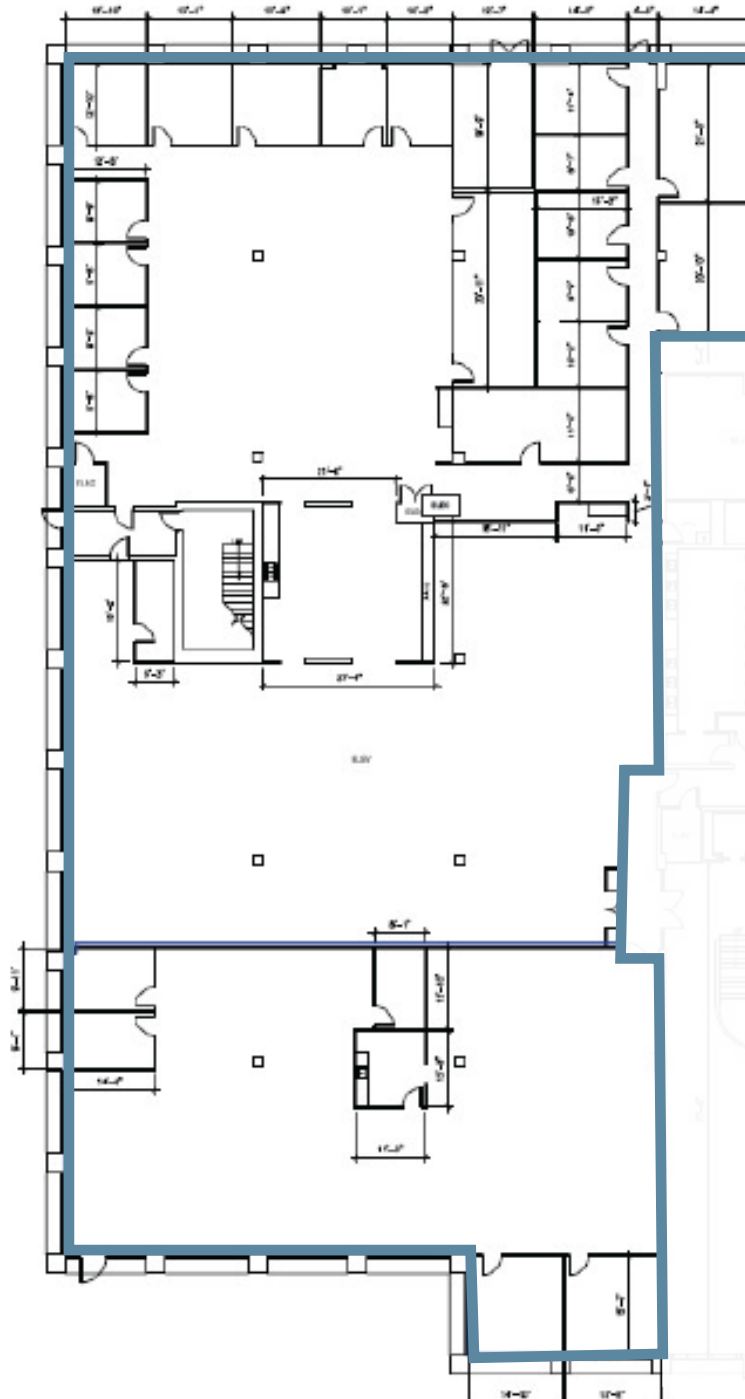
11399 16TH CT. N. SUITES 100 & 106, ST. PETERSBURG, FL 33716



LEE &  
ASSOCIATES

COMMERCIAL REAL ESTATE SERVICES  
TAMPA BAY

**UP TO 20,441 SF**  
**COMES FURNISHED OR UNFURNISHED**



Jessica Mizrahi, SIOR  
jmizrahi@lee-associates.com  
D 813.804.0886

Ben Ewers  
bewers@lee-associates.com  
D 352.362.8535



All information furnished regarding property for sale, rental or financing is from sources deemed reliable, but no warranty or representation is made to the accuracy thereof and same is submitted to errors, omissions, change of price, rental or other conditions prior to sale, lease or financing or withdrawal without notice. No liability of any kind is to be imposed on the broker herein.