

Industrial Space

310 E Commercial Ave | Lowell, AR



FOR SUBLEASE



BUILDING HIGHLIGHTS

- 8,500± SF Available of Warehouse with an estimated 3,200± SF of shared space
- Demisable to 2,000± SF
- Asking Rate: \$8.50/SF
- 2 Roll-up Doors and 1 Dock Door available
- Warehouse Clear height: 20'
- ESFR Wet System
- Tenant Wi-Fi included
- Shared dumpsters on site
- Close proximity to Hwy 71 and I-49
- Just East of JB Hunt headquarters

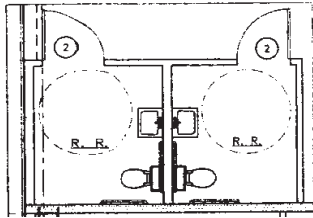
*Information deemed reliable but not guaranteed

FOR MORE INFORMATION
PLEASE CONTACT:

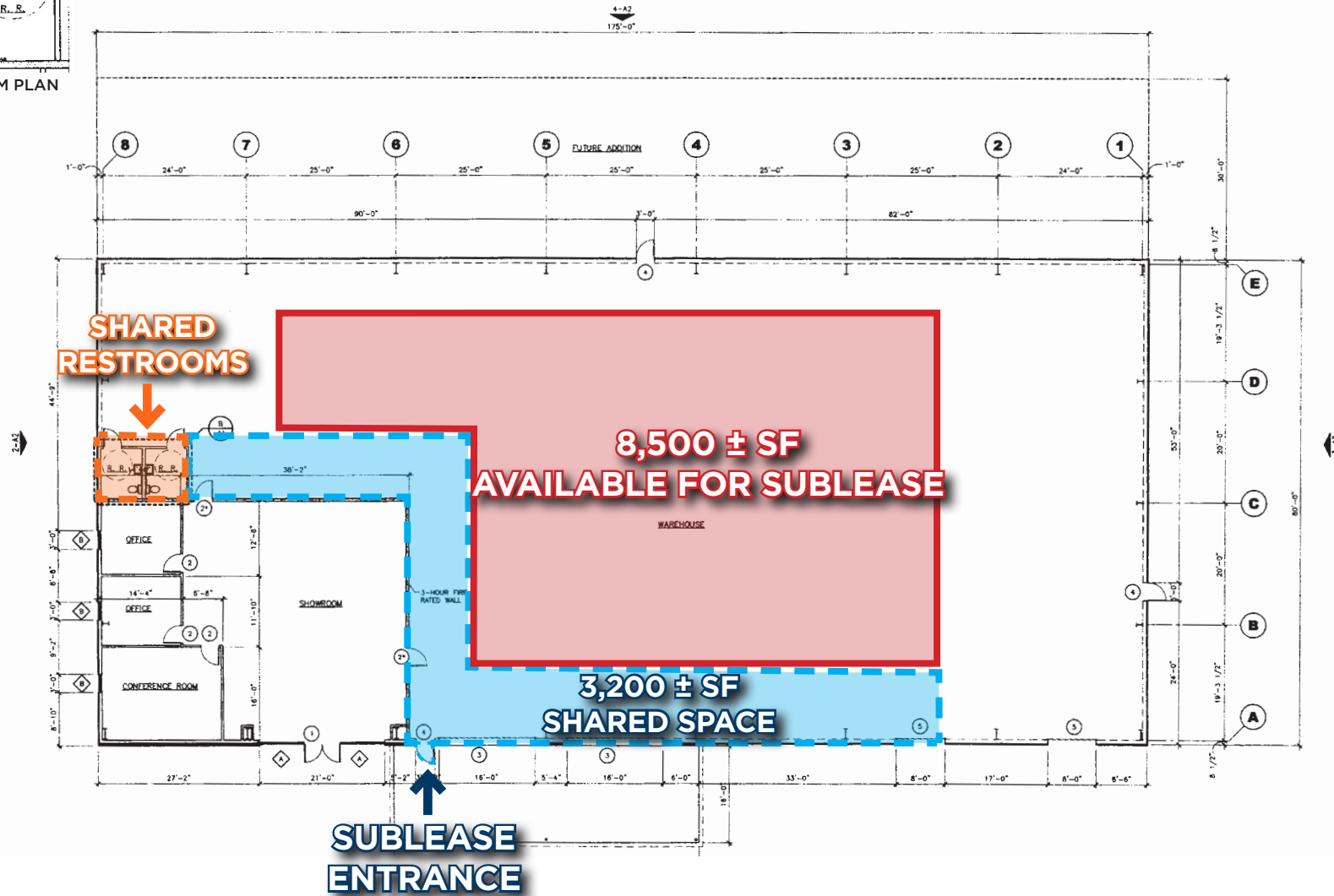
STEPHANIE FARMER
sfarmer@sagepartners.com
479 845 3022

SARAH KATE ELLIS
sellis@sagepartners.com
479 845 3030

[sagepartners.com](https://www.sagepartners.com)



ENLARGED RESTROOM PLAN



EXTERIOR PHOTOS 310 E COMMERCIAL AVE | LOWELL, AR



INTERIOR PHOTOS 310 E COMMERCIAL AVE | LOWELL, AR





SUBJECT PROPERTY

26,000 Vehicles Per Day

76,000 Vehicles Per Day

APPLE BLOSSOM AVE



OAKWOOD & DIXIELAND DEVELOPMENT



SPRINGDALE NORTHERN BYPASS



MCGAUGH RV
LET THE GOOD TIMES ROLL



17,000 Vehicles Per Day

WAGON WHEEL RD

24,000 Vehicles Per Day