

# TRANSAL PARK

8305 NW 27 STREET, Doral, FL 33122, Unit 113



**17,655 SF AVAILABLE FOR LEASE**



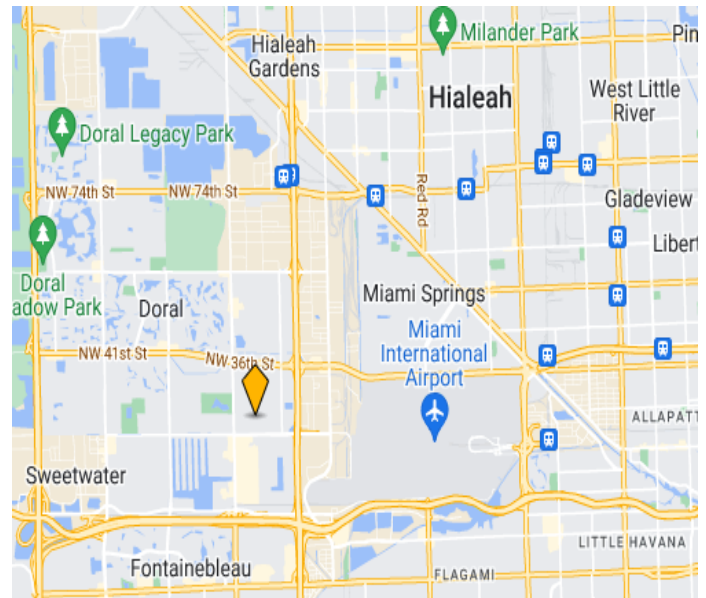
**FACILITY OVERVIEW** - Seagis Transal Park is a Class "A" 113,380 SF industrial facility located in the heart of Doral adjacent to the **MIA Cargo Ramp**, with access to the cargo area just minutes away. With a building depth of 175', the space is ideal for smaller occupiers.

## PROPERTY FEATURES

- ❖ 17,655 Available SF
- ❖ ±1,785 SF Office
- ❖ 24' Clear Height
- ❖ 5 Dock Doors
- ❖ 1 Ramp
- ❖ Building Depth: 175'
- ❖ Column Spacing: 35'x40'
- ❖ Available March 2023

## AMENITIES

- ❖ Major banks within 1/2 mile: Wells Fargo, Bank of America, Chase, & City National Bank
- ❖ Jackson West Medical Center within 1/2 mile
- ❖ Restaurants, hotels, & shopping centers also in the immediate area



For more information, or to schedule a tour, please contact:

Jim Armstrong  
(305) 593-2222 Ext. 820  
jarmstrong@theeastongroup.com

Mike Waite  
(305) 593-2222 Ext. 822  
mwaite@theeastongroup.com

Dalton Easton  
(305) 878-7329 Ext. 858  
deaston@theeastongroup.com

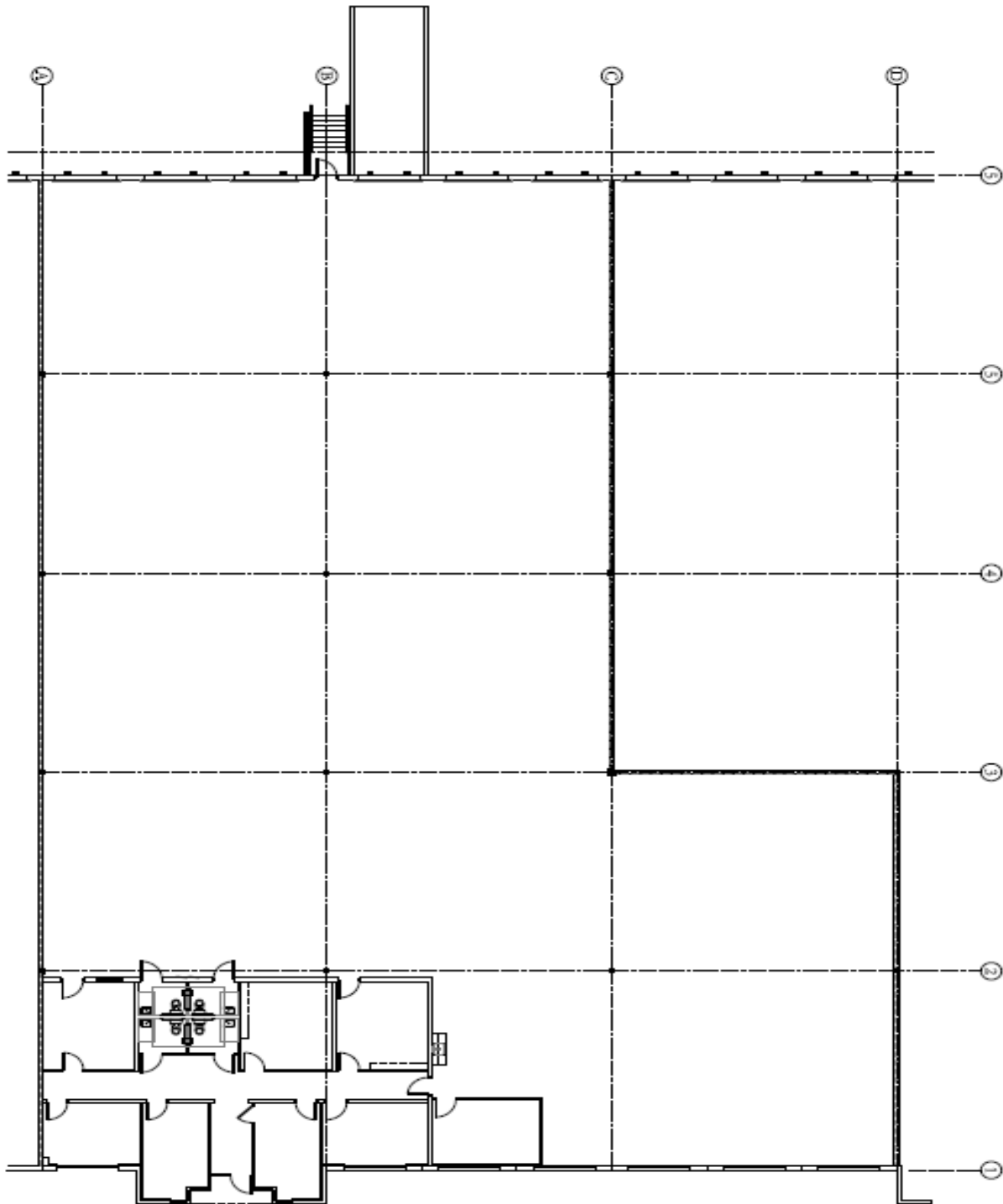


# TRANSAL PARK



8305 NW 27 STREET, Doral, FL 33122, Unit 113

17,655 SF AVAILABLE FOR LEASE



For more information, or to schedule a tour, please contact:

Jim Armstrong  
(305) 593-2222 Ext. 820  
jarmstrong@theeastongroup.com

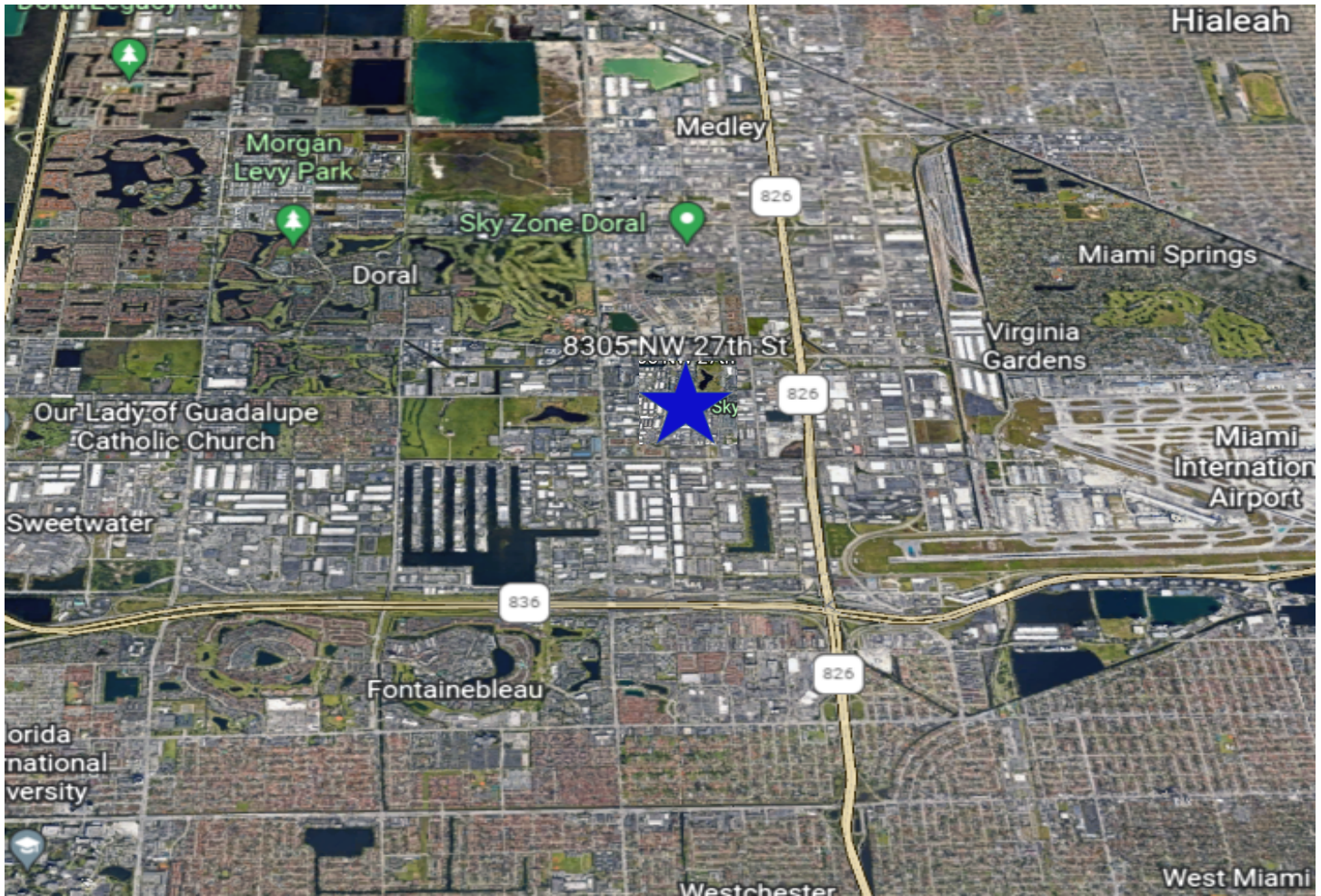
Mike Waite  
(305) 593-2222 Ext. 822  
mwaite@theeastongroup.com

Dalton Easton  
(305) 878-7329 Ext. 858  
deaston@theeastongroup.com



# TRANSAL PARK

8305 NW 27 STREET, Doral, FL 33122, Unit 113



## Distances To

- Miami International Airport:  
**6 Miles / 12 Minutes**
- Port Of Miami:  
**13 Miles / 25 Minutes**
- SR 836/826  
**1/4 Mile / less than 5 Minutes**
- MIA Cargo Ramp:  
**1/4 Mile / less than 5 Minutes**



For more information, or to schedule a tour, please contact:

Jim Armstrong  
(305) 593-2222 Ext. 820  
jarmstrong@theeastongroup.com

Mike Waite  
(305) 593-2222 Ext. 822  
mwaite@theeastongroup.com

Dalton Easton  
(305) 878-7329 Ext. 858  
deaston@theeastongroup.com

