

For Lease  
±630-2,756 SF  
Office Space



# Commerce Pointe Silver

1818 S Australian Avenue  
West Palm Beach, FL 33409

## Property Features

- Fantastic leasing opportunity near Downtown West Palm Beach
- Four-story office building with a beautiful atrium lobby and move-in ready suites
- Excellent access to arterial roads
- Central Palm Beach County location with great airport access and minutes from Downtown West Palm Beach
- Near popular amenities like CityPlace, the Warehouse District, Town of Palm Beach, the Governmental Center, and more

## Key Features:



**Great location**  
adjacent to I-95



**Near the best of**  
the Palm Beaches



**Lushly landscaped**  
with pond & lake views



**Move-in ready office**  
suites available

## For More Information:

**Jason L. Sundook, SIOR**

Principal | [jsundook@mhcreal.com](mailto:jsundook@mhcreal.com)

**Patrick Almand**, Associate

C: 443 370 8655 | [palmand@mhcreal.com](mailto:palmand@mhcreal.com)





# FOR LEASE: COMMERCE POINTE SILVER, WEST PALM BEACH

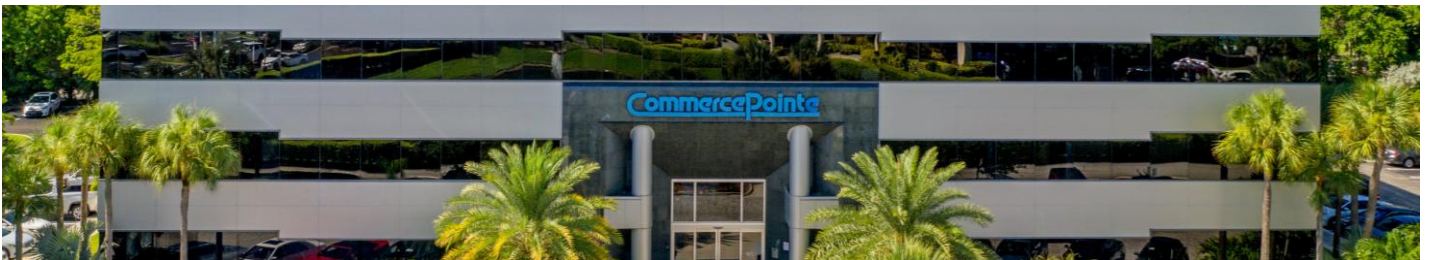
## Move-In Ready Office Space Near Downtown & I-95



### Modern Office Space IN AN UNBEATABLE WEST PALM BEACH LOCATION

Welcome to Commerce Pointe Silver, a prime office building centrally located in West Palm Beach. The property offers lake views, meticulously maintained common areas, and a beautiful atrium lobby. Commuting is a breeze with easy access to I-95, Okeechobee Blvd., Brightline, and commuter rail.

Featuring an amazing location near the best of the Palm Beaches, move-in ready offices, and on-site property management, Commerce Pointe Silver offers high-quality workspace tailored for Palm Beach County professionals.



#### For More Information:

Jason L. Sundook, SIOR | [jsundook@mhcreal.com](mailto:jsundook@mhcreal.com)

Patrick Almand | [palmand@mhcreal.com](mailto:palmand@mhcreal.com)



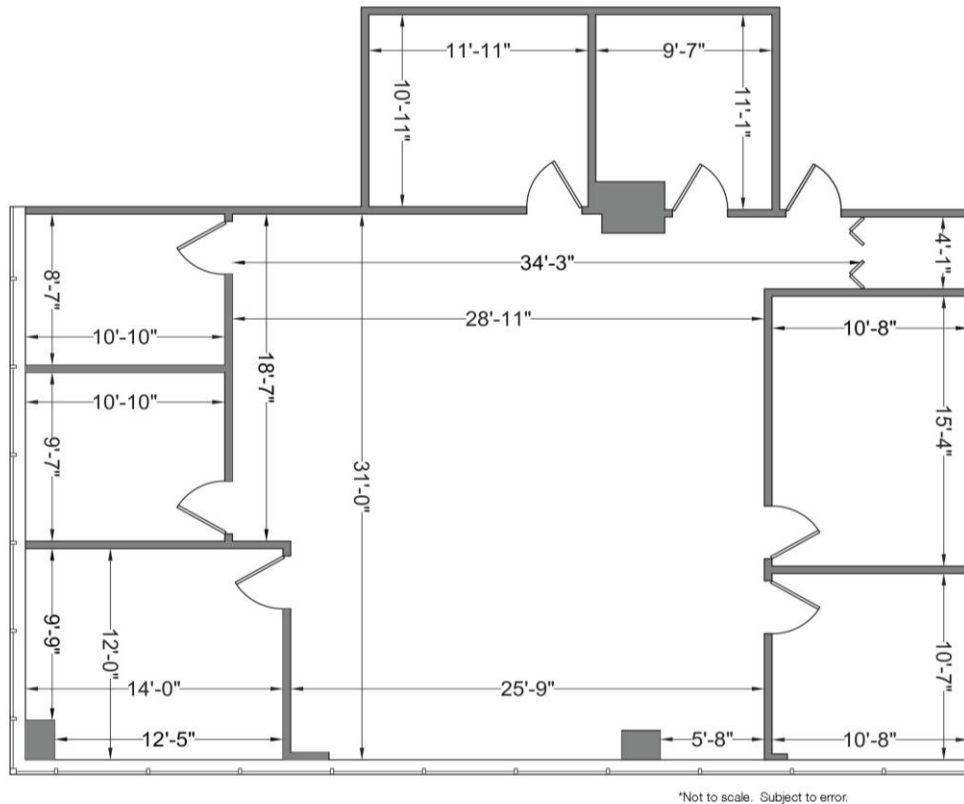
561 471 8000



[www.mhcreal.com](http://www.mhcreal.com)

## FOR LEASE: COMMERCE POINTE SILVER, WEST PALM BEACH

### Flexible Layout with Immediate Availability



#### **SUITE 209** 2,199 SF

- Spacious suite with flexible, open work area and seven private offices
- Carpeted work area with wood floors in offices



#### For More Information:

Jason L. Sundook, SIOR | [jsundook@mhcreal.com](mailto:jsundook@mhcreal.com)

Patrick Almand | [palmand@mhcreal.com](mailto:palmand@mhcreal.com)



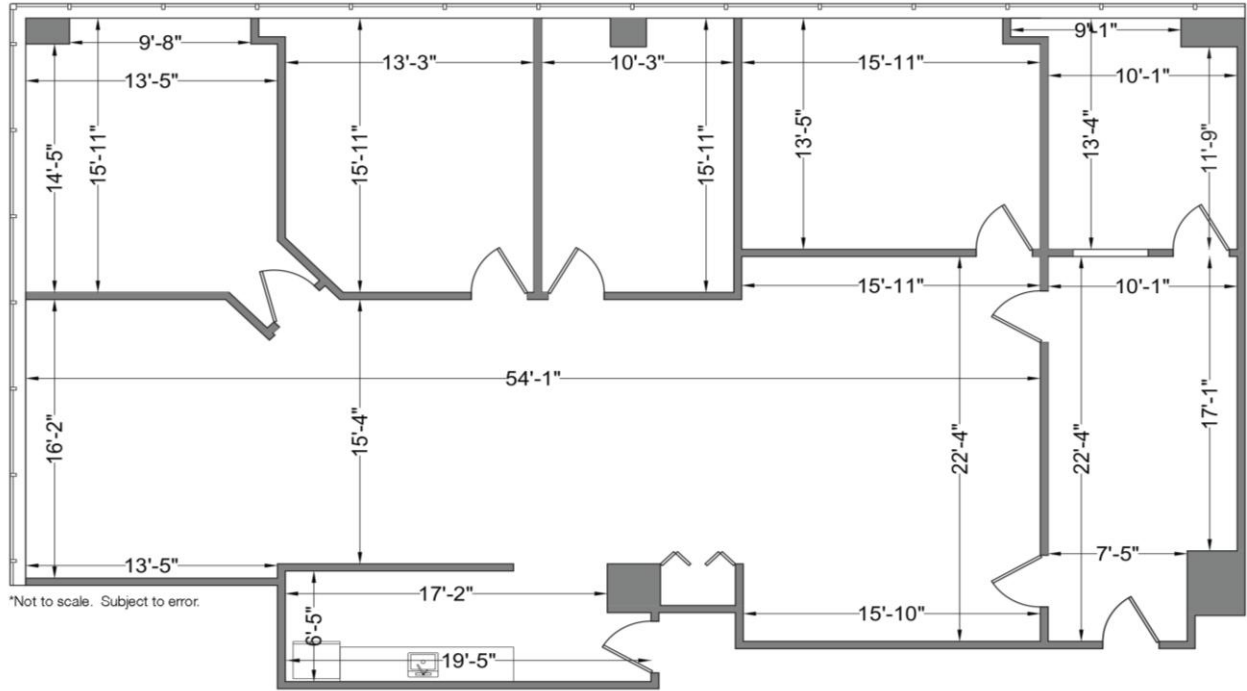
561 471 8000



[www.mhcreal.com](http://www.mhcreal.com)

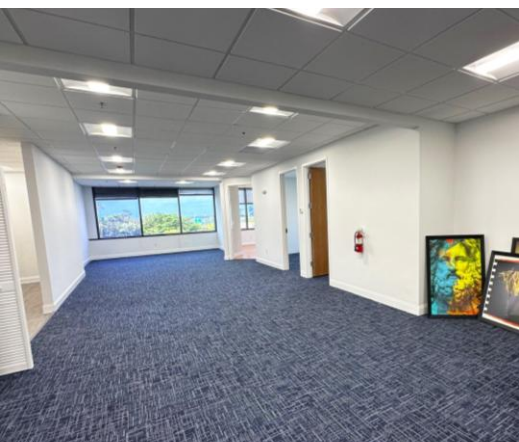


## Bright, Move-In Ready Office Space



**SUITE 420**  
2,756 SF

- Enjoy expansive water and city views in this move-in ready suite
- Efficient layout with reception/entry, five private offices, and open workspace, and kitchen area



**TAKE ADVANTAGE OF THIS STRATEGIC  
LOCATION & MOVE-IN READY SUITES**

561 471 8000

### For More Information:

Jason L. Sundook, SIOR | [jsundook@mhcreal.com](mailto:jsundook@mhcreal.com)

Patrick Almand | [palmand@mhcreal.com](mailto:palmand@mhcreal.com)



561 471 8000



www.mhcreal.com