



5264 Long Beach Blvd

5264 Long Beach Blvd, Long Beach, CA 90805

Robert Shaw

Robert Shaw

5290 N Long Beach Blvd, Long Beach, CA 90805

shawr26@yahoo.com

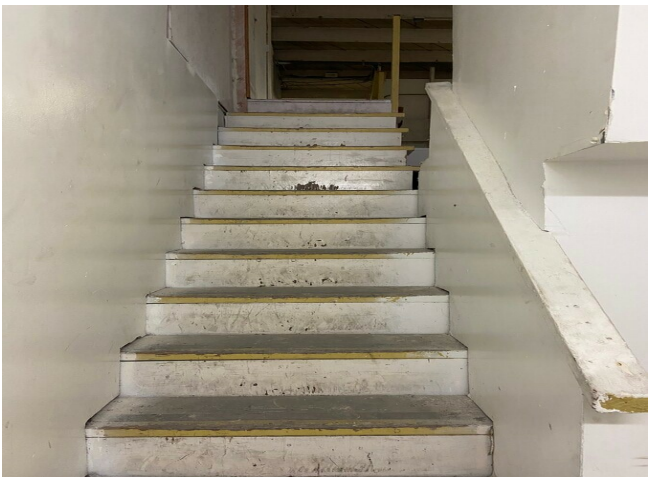
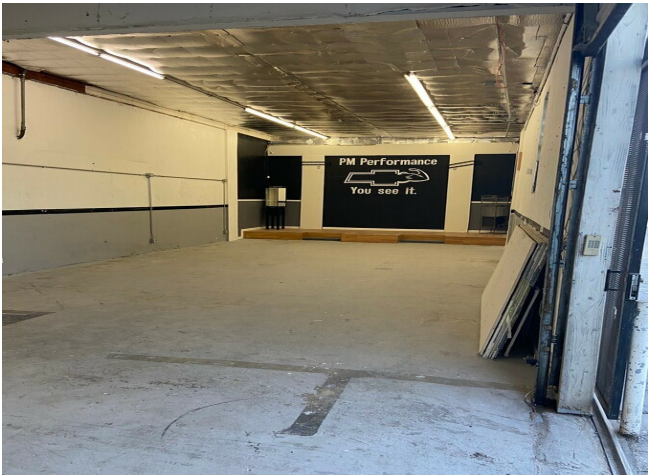
(949) 510-4181



5264 Long Beach Blvd

\$12.00 /SF/YR

This property is a flex commercial building located in the Bixby Knolls area of North Long Beach. Built in 1940, it offers adaptable space suitable for light industrial or showroom use, with convenient access to major thoroughfares....



Rental Rate:	\$12.00 /SF/YR
Property Type:	Flex
Property Subtype:	Light Distribution
Building Class:	C
Rentable Building Area:	5,000 SF
Year Built:	1940
Rental Rate Mo:	\$1.00 /SF/MO

1

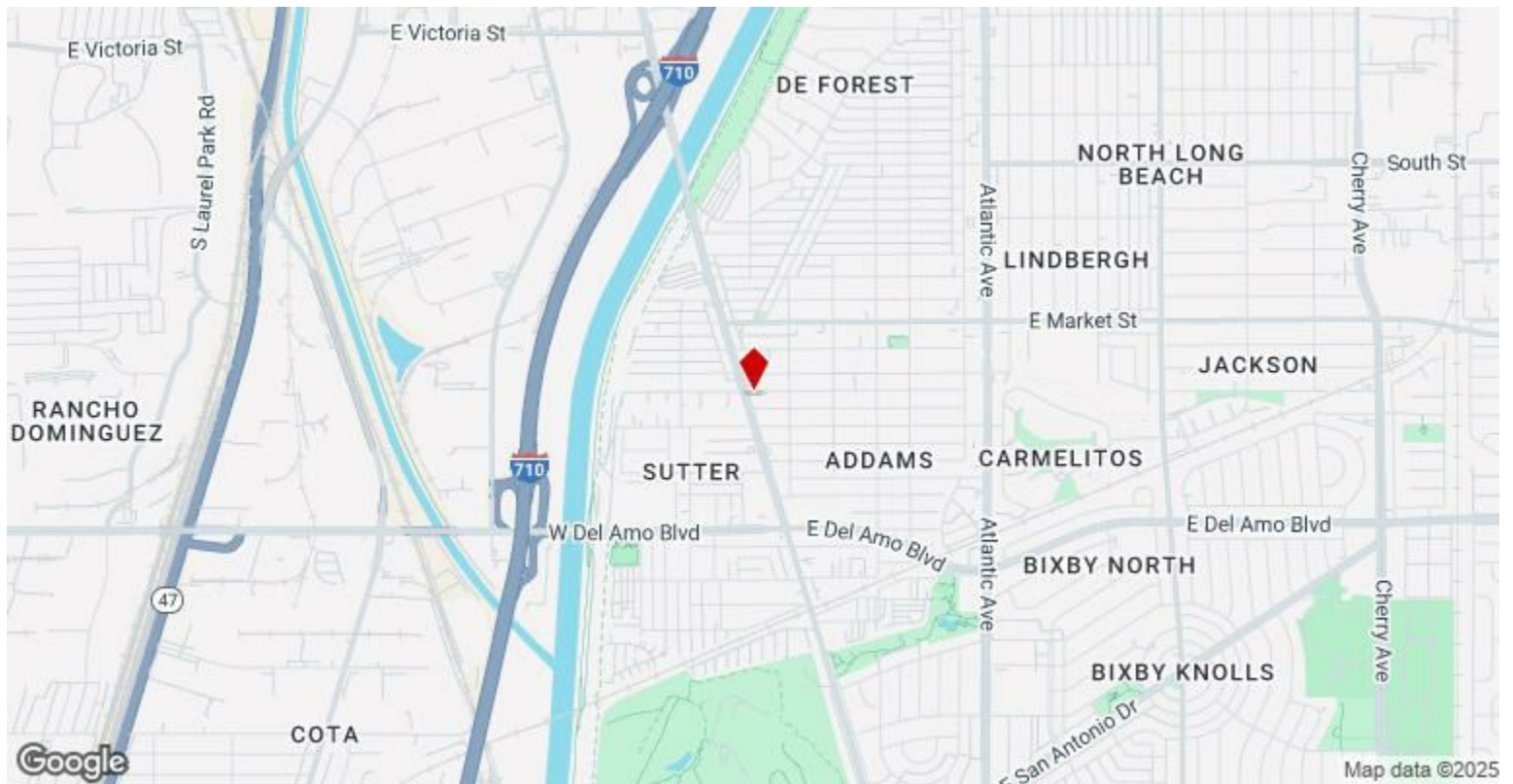
1st Floor

Space Available	5,000 SF
Rental Rate	\$12.00 /SF/YR
Date Available	Now
Service Type	Modified Gross
Space Type	Relet
Space Use	Flex
Lease Term	1 - 2 Years

very large gated secure yard/parking lot with large gate. warehouse/showroom has a remote-control rollup door, plus a large open flex/office. second floor has two giant rooms with plenty of storage area; previous building owner had a wholesale electric company running out of building for many years.

Major Tenant Information

Tenant	SF Occupied	Lease Expired
Furniture Plus	-	



5264 Long Beach Blvd, Long Beach, CA 90805

This property is a flex commercial building located in the Bixby Knolls area of North Long Beach. Built in 1940, it offers adaptable space suitable for light industrial or showroom use, with convenient access to major thoroughfares.

Property Photos



Property Photos



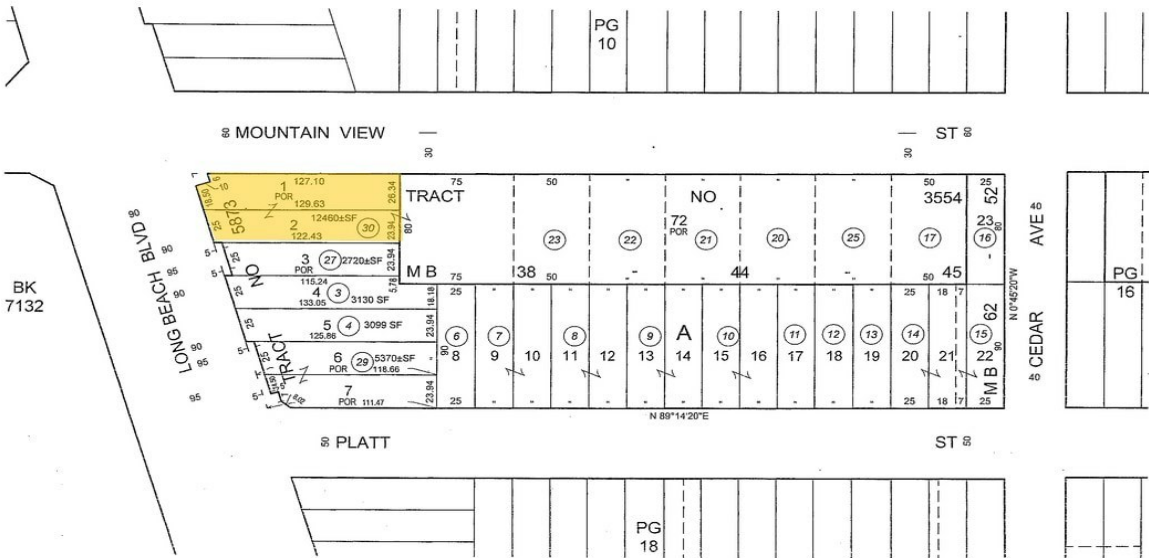
Property Photos



IMG_6122

7131	17	P. A. 881-2, 3 & 24	TRA 4992	REVISED 950916 2009071502013001-26	2010082904004001-26 2010082410002001-26			SEARCH NO		OFFICE OF THE ASSESSOR COUNTY OF LOS ANGELES COPYRIGHT © 2002
	SHEET									

2011



Property Photos



Building Photo



Building Photo

Property Photos



Building Photo



Building Photo