



# Prime Meridian Building

360 SOUTH 1300 WEST STREET, PLEASANT GROVE, UTAH 84062

## For Lease

### Property Highlights

- 6,000–25,216 SF available
  - Second floor: ±12,608 SF
  - Third floor: ±12,608 SF
- \$30.00/SF full service
- Available now
- Ideal for office or medical use
- Warm shell ready for tenant improvements
- Ability to demise to a partial floor

*For information, please contact:*

#### Trigger Reital

*Executive Managing Director*  
t 801-578-5507  
treital@newmarkmw.com

#### Jeff Rossi

*Executive Managing Director*  
t 801-578-5508  
jrossi@newmarkmw.com

#### Din Huremovic

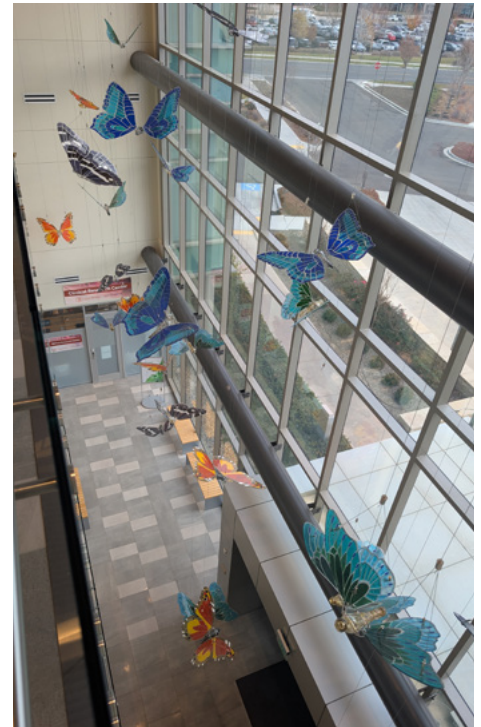
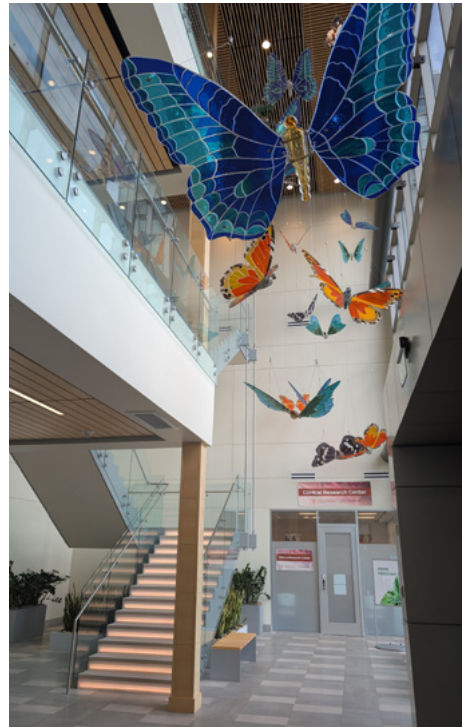
*Associate*  
t 801-578-5506  
dhuremovic@newmarkmw.com

# NEWMARK

 MOUNTAIN WEST

[newmarkmw.com](http://newmarkmw.com)

The information contained herein has been obtained from sources deemed reliable but has not been verified and no guarantee, warranty or representation, either express or implied, is made with respect to such information. Terms of sale or lease and availability are subject to change or withdrawal without notice.



*For information, please contact:*

**Trigger Reital**

*Executive Managing Director*

t 801-578-5507

treital@newmarkmw.com

**Jeff Rossi**

*Executive Managing Director*

t 801-578-5508

jrossi@newmarkmw.com

**Din Huremovic**

*Associate*

t 801-578-5506

dhuremovic@newmarkmw.com

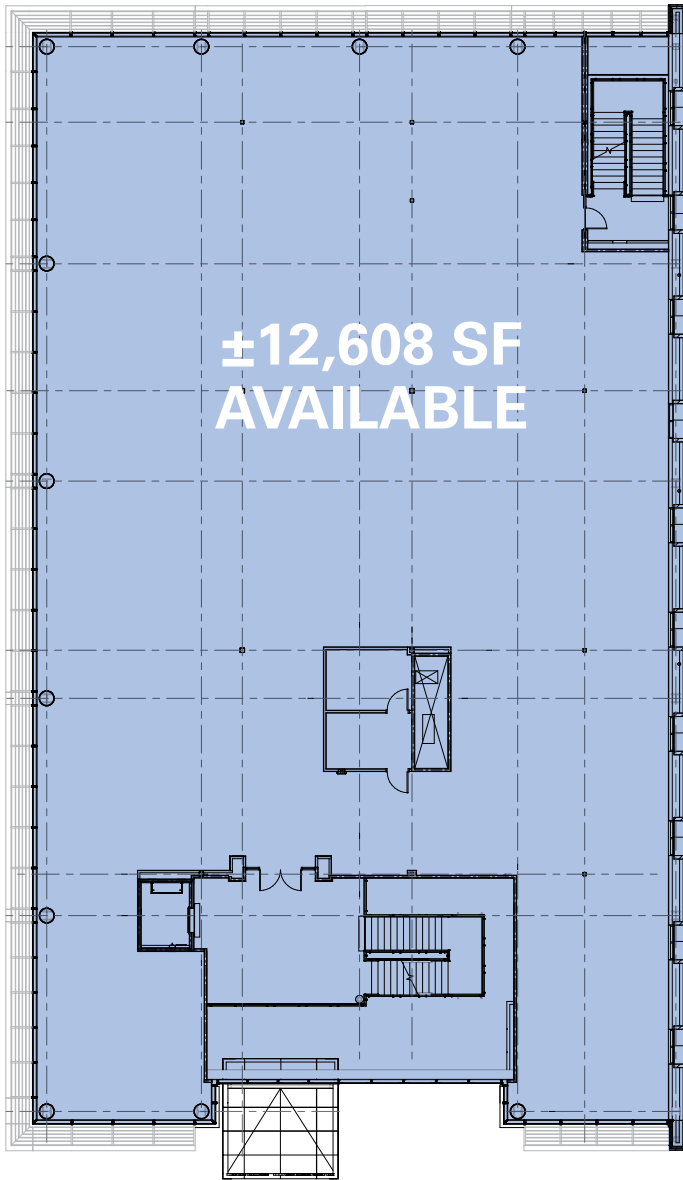
**NEWMARK**

**MOUNTAIN WEST**

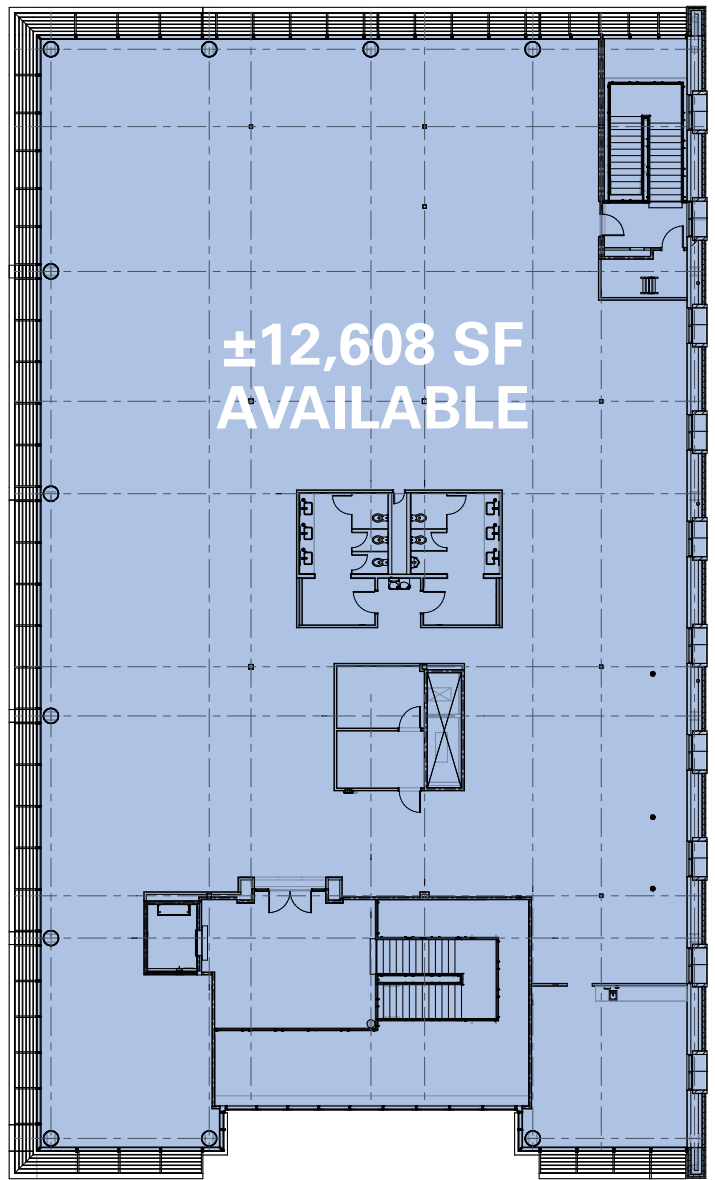
[newmarkmw.com](http://newmarkmw.com)

The information contained herein has been obtained from sources deemed reliable but has not been verified and no guarantee, warranty or representation, either express or implied, is made with respect to such information. Terms of sale or lease and availability are subject to change or withdrawal without notice.

# LEVEL 2



# LEVEL 3



For information, please contact:

**Trigger Reital**

Executive Managing Director

t 801-578-5507

treital@newmarkmw.com

**Jeff Rossi**

Executive Managing Director

t 801-578-5508

jrossi@newmarkmw.com

**Din Huremovic**

Associate

t 801-578-5506

dhuremovic@newmarkmw.com

**NEWMARK**

**MOUNTAIN WEST**

[newmarkmw.com](http://newmarkmw.com)

The information contained herein has been obtained from sources deemed reliable but has not been verified and no guarantee, warranty or representation, either express or implied, is made with respect to such information. Terms of sale or lease and availability are subject to change or withdrawal without notice.



For information, please contact:

**Trigger Reital**

Executive Managing Director  
 t 801-578-5507  
 treital@newmarkmw.com

**Jeff Rossi**

Executive Managing Director  
 t 801-578-5508  
 jrossi@newmarkmw.com

**Din Huremovic**

Associate  
 t 801-578-5506  
 dhuremovic@newmarkmw.com

**NEWMARK**

**MOUNTAIN WEST**

[newmarkmw.com](http://newmarkmw.com)

The information contained herein has been obtained from sources deemed reliable but has not been verified and no guarantee, warranty or representation, either express or implied, is made with respect to such information. Terms of sale or lease and availability are subject to change or withdrawal without notice.