

LEASE

FLEXIBLE OFFICE SPACE AVAILABLE IN DELAND

1191 S Woodland Blvd Deland, FL 32720



PROPERTY DESCRIPTION

5,000 to 10,000 square feet of flexible space available for buildout as Corporate Office, Government Office, Medical Office, Educational facility, and many other possibilities for your Business needs. Strategically positioned within minutes of Downtown Deland providing excellent connectivity to this regions key Business Districts and Residential Communities. The surrounding area and this high traffic roadway (Highway 17-92) is in close proximity to various amenities such as Dining, Entertainment and Recreation. Join Advent Health training facility and Florida Technical College at this location. The area is centrally located between Daytona Beach and the City of Orlando Markets and is minutes from neighboring municipalities of Orange City and Deltona. Signage is available on Monument sign and on the building. Ample parking is available.

PROPERTY HIGHLIGHTS

- High Traffic Area
- Highly Visible
- Ample Parking

OFFERING SUMMARY

Lease Rate:	\$14.00 SF/yr (NNN \$4.00)
Number of Units:	1
Available SF:	5,000 - 10,000 SF
Lot Size:	401,623 SF
Building Size:	72,288 SF

DEMOGRAPHICS	0.3 MILES	0.5 MILES	1 MILE
Total Households	312	974	3,341
Total Population	782	2,551	9,054
Average HH Income	\$70,771	\$65,046	\$65,183

Anthony Avila
(386) 532-4119

John Wanamaker
(386) 775-8633

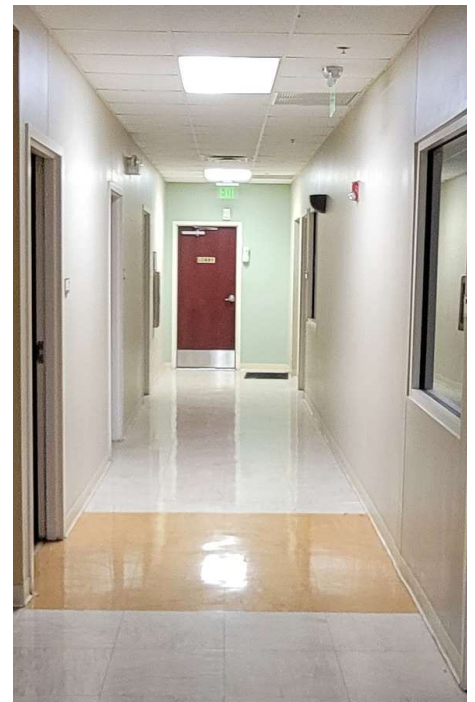
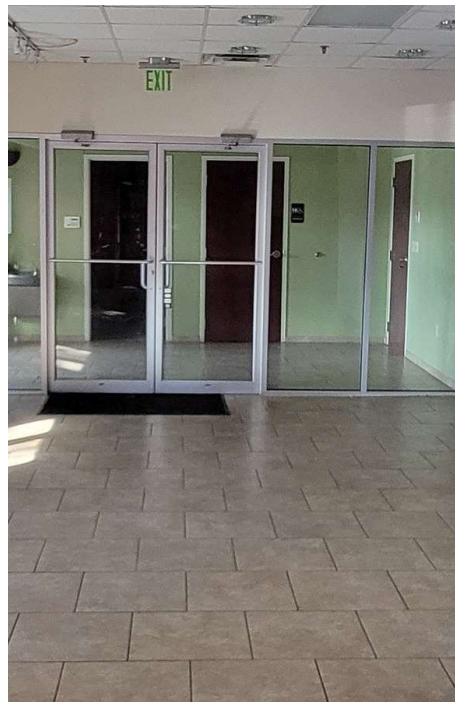


**COLDWELL BANKER
COMMERCIAL**
AI GROUP

LEASE

FLEXIBLE OFFICE SPACE AVAILABLE IN DELAND

1191 S Woodland Blvd Deland, FL 32720



Anthony Avila
(386) 532-4119

John Wanamaker
(386) 775-8633

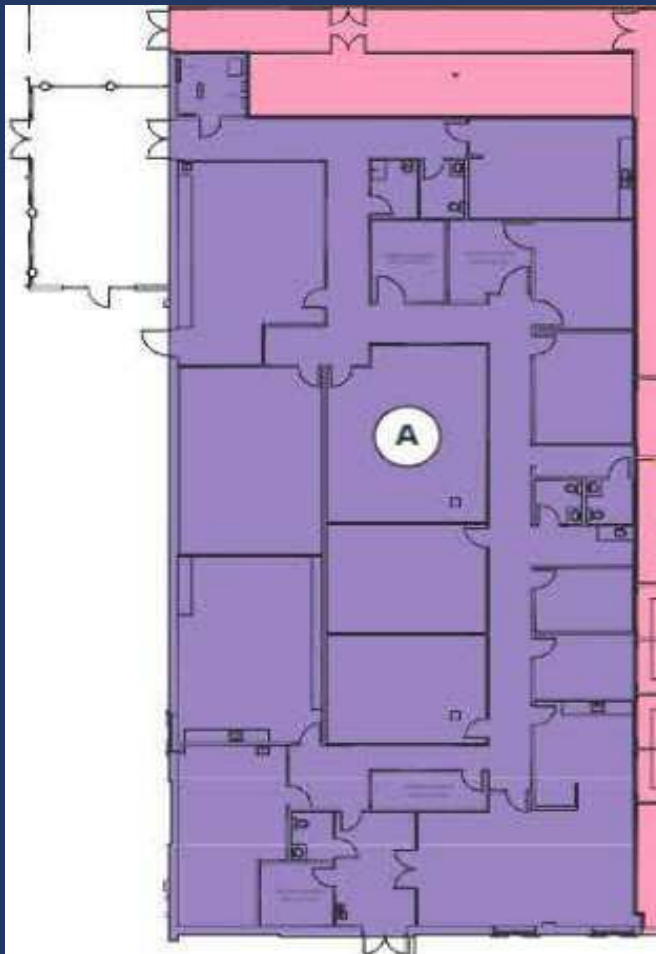


**COLDWELL BANKER
COMMERCIAL**
AI GROUP

FOR LEASE
1191 S. Woodland Blvd Unit A
10,000 Sq. Ft.



FLOOR PLAN
FOR REFERENCE USE ONLY



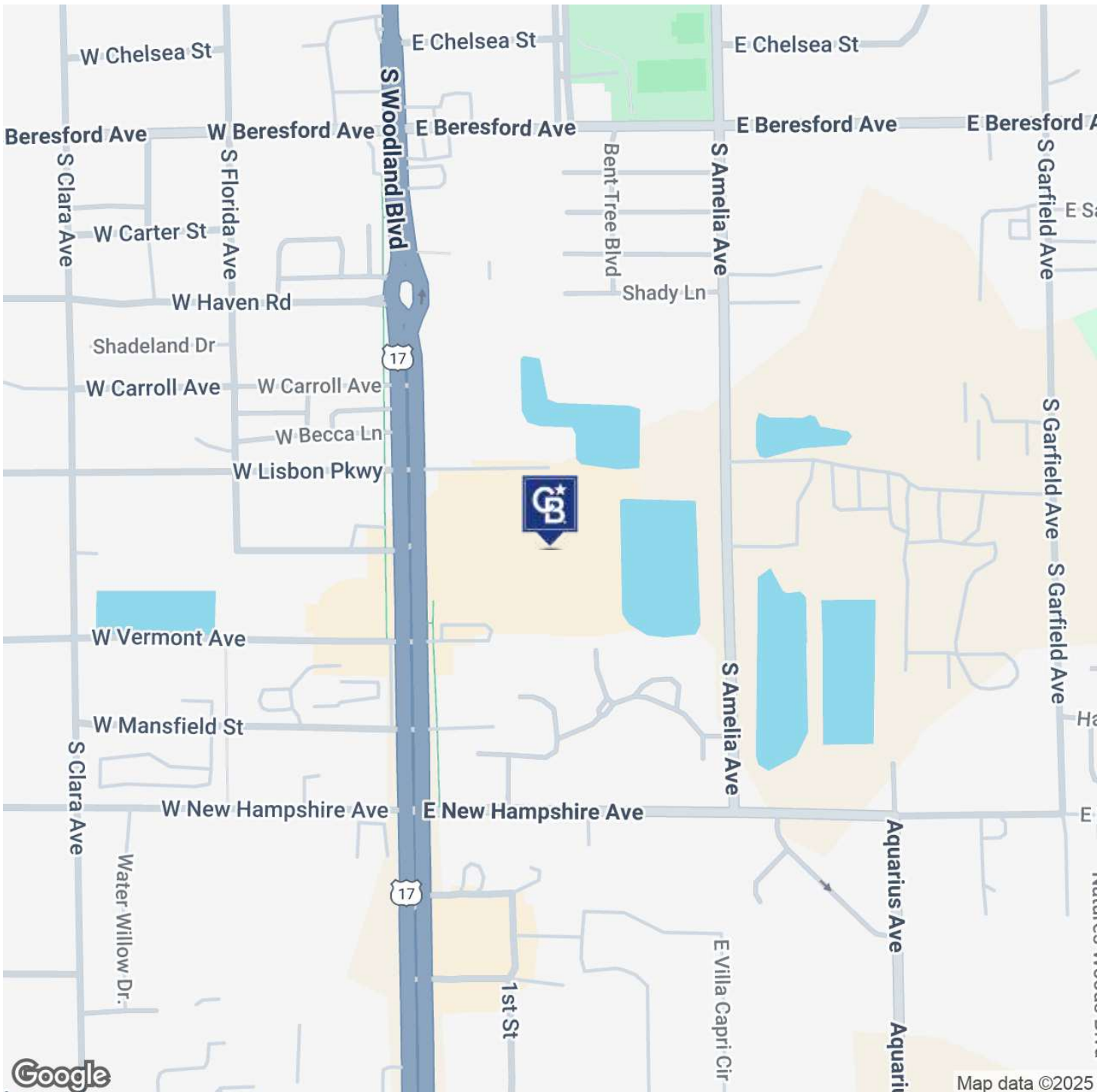
Coldwell Banker Commercial AI Group
1019 Town Center Drive Suite 200
Orange City, Florida 32763

Anthony Avila
(386)532-4119
anthony@cbcaigroup.com

LEASE

FLEXIBLE OFFICE SPACE AVAILABLE IN DELAND

1191 S Woodland Blvd Deland, FL 32720



Anthony Avila
(386) 532-4119

John Wanamaker
(386) 775-8633

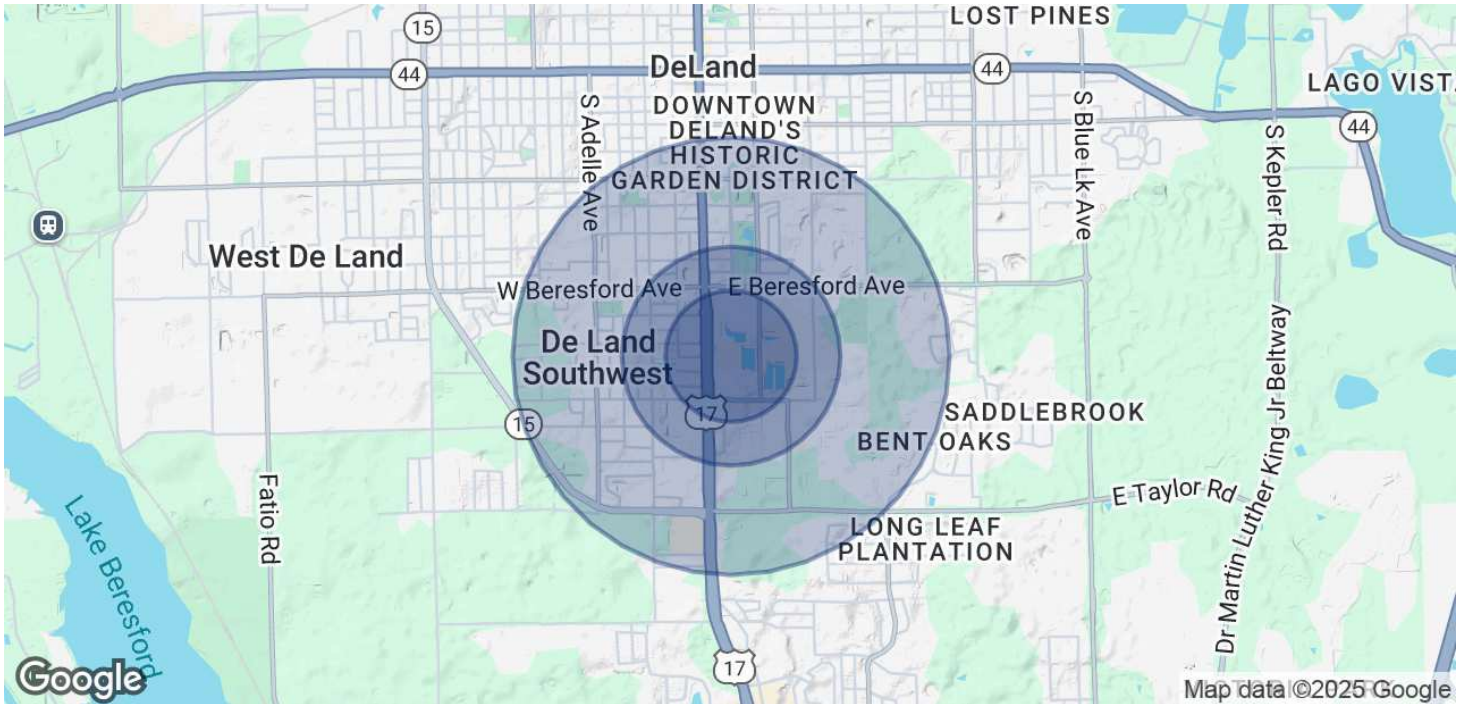


**COLDWELL BANKER
COMMERCIAL**
AI GROUP

LEASE

FLEXIBLE OFFICE SPACE AVAILABLE IN DELAND

1191 S Woodland Blvd Deland, FL 32720



POPULATION

	0.3 MILES	0.5 MILES	1 MILE
Total Population	782	2,551	9,054
Average Age	44	46	43
Average Age (Male)	42	42	41
Average Age (Female)	46	48	45

HOUSEHOLDS & INCOME

	0.3 MILES	0.5 MILES	1 MILE
Total Households	312	974	3,341
# of Persons per HH	2.5	2.6	2.7
Average HH Income	\$70,771	\$65,046	\$65,183
Average House Value	\$301,814	\$296,216	\$288,983

Demographics data derived from AlphaMap

Anthony Avila
(386) 532-4119

John Wanamaker
(386) 775-8633



**COLDWELL BANKER
COMMERCIAL**
AI GROUP