

# Louisiana Flood Map

## Dixie Ranch Rd - 40 Acres

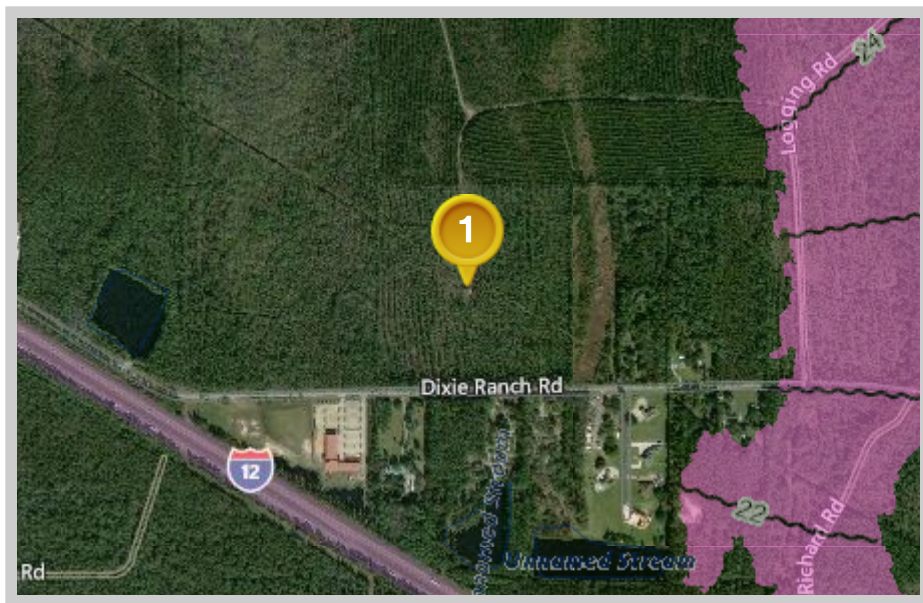
### Visible Layers

Preliminary FIRM

Bing Hybrid

### Point Coordinates

Point #	Lat., Long.
1	30.3493, -89.9034



Flood information in this table is from the: █ Preliminary FIRM

Point	Panel ID	Flood Zone	BFE	Ground Elevation	Wind Speed*
1	22103C0460F 04/30/2008	X	out	24.9	137 mph

- Ground Elevation** is provided by USGS's elevation web service which provides the best available data for the specified point. If unable to find elevation at the specified point, the service returns an extremely large, negative value (-1.79769313486231E+308).
- LRC** (Louisiana Residential Code) Wind Speed as of February 1, 2018 is provided by Applied Technology Council's Wind Speed Service. This "Ultimate Design Wind Speed" must be used with the 2015 and later versions of the International Residential Code. See wind speed maps (<http://maps.lsuagcenter.com/windspeed/>) for earlier standards and applicable code versions.

Floodplain data that is shown on this map is the same data that your flood plain administrator uses. This web product is not considered an official FEMA Digital Flood Insurance Rate Map (DFIRM). It is provided for information purposes only, and it is not intended for insurance rating purposes. Please contact your local floodplain administrator for more information or to view an official copy of the FIRM or DFIRM.