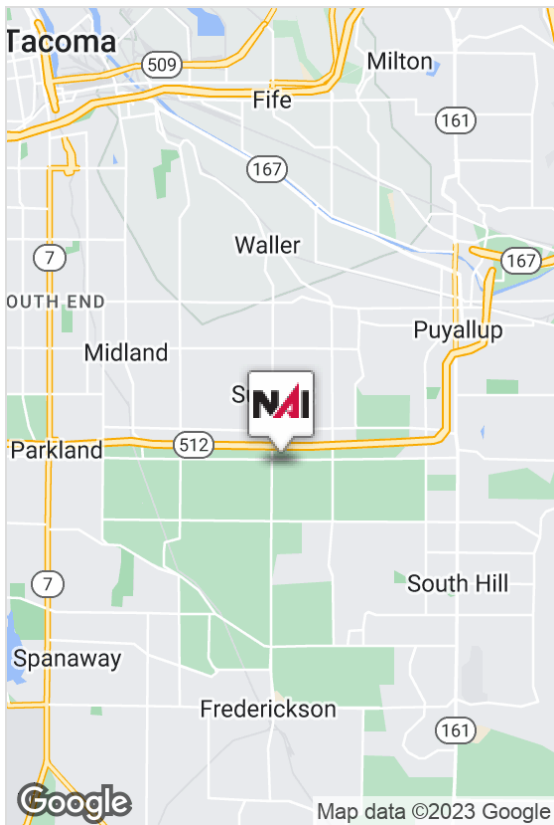
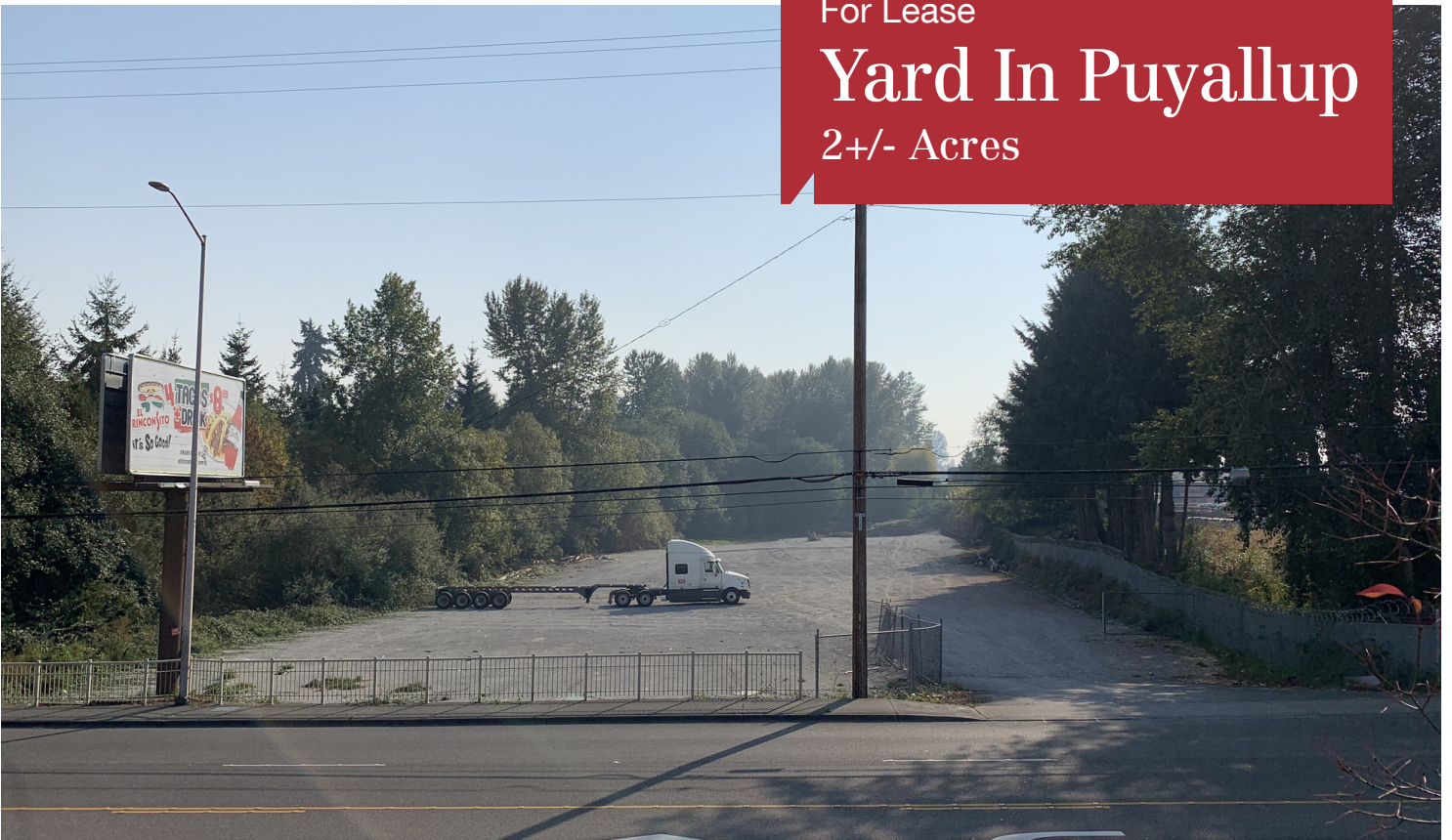


For Lease

# Yard In Puyallup

2+/- Acres



## 5604 112th Street E

Puyallup, WA 98373

- 2+/- Acre site
- Graveled, fenced, and gated
- Zoned: (EC) Employment Corridor, Pierce County
- Ideal for truck/trailer parking or contractor storage yard
- Easy access to Hwy 512/Canyon Rd E
- Lease Rate: \$11,000/month + NNN  
Estimated 2022 NNN = \$363/month

For more information:

**Bruce Goldstein**

Senior Vice President • +1 425 586 5632 • [bgoldstein@nai-psp.com](mailto:bgoldstein@nai-psp.com)



BELLEVUE | TACOMA

10900 NE 8th Street, Suite 1500

Bellevue, WA 98004

+1 425 586 5600

[nai-psp.com](http://nai-psp.com)

THE INFORMATION CONTAINED HEREIN HAS BEEN GIVEN TO US BY THE OWNER OF THE PROPERTY OR OTHER SOURCES WE DEEM RELIABLE, WE HAVE NO REASON TO DOUBT ITS ACCURACY, BUT WE DO NOT GUARANTEE IT. ALL INFORMATION SHOULD BE VERIFIED PRIOR TO PURCHASE OR LEASE.