



\$3,950.00/month

Opportunity

- 1,800 sf available of Class A office space
- After-hours card access
- Waterfront view

Rate

- \$26.50/sf

Parking

- 3.44/1,000 sf parking ratio

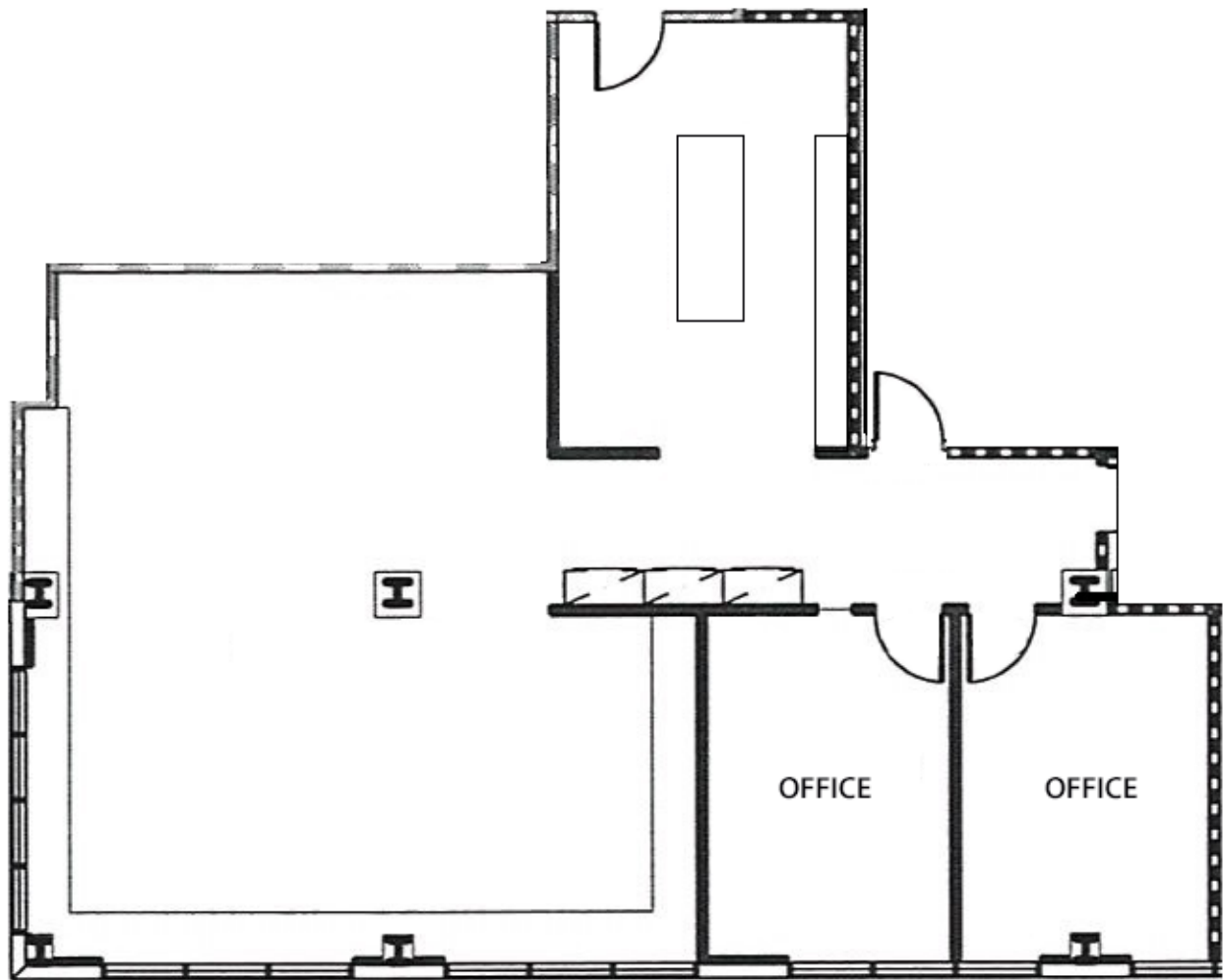
Location

- Minutes from Tampa international Airport
- Easy access to I-275, Highway 60 and Veterans Expressway
- Close proximity to restaurants and hotels

For more information, please contact:

Kenneth E. Lane III, Managing Director
D 813 444 0623
C 813 789 2737
ken.lane@avisonyoung.com

1715 N. Westshore Boulevard
Suite 450
Tampa, FL 33607
813 288 1800



Suite 450 - 1,800 sf

For more information, please contact:

Kenneth E. Lane III, Managing Director
D 813 444 0623
C 813 789 2737
ken.lane@avisonyoung.com

**AVISON
YOUNG**

avisonyoung.com

1715 N. Westshore Boulevard
Suite 450
Tampa, FL 33607
813 288 1800