

4914 Johnson Drive



PRIMARY USE
OFFICE SPACE

LOCATION

4914 JOHNSON DRIVE,
MISSION, KANSAS 66205

- Located in walkable Roeland Park
- Across from the former Mission Mall site
- Parking spaces available for up to 15 cars
- Strong retail and restaurants nearby
- Close proximity to Fairway, Merriam and I-35
- Over 500,000 people in a 5 mi radius

RETAIL LEASE RATE

\$2,200

SIZE

1,800 SF

DEMOGRAPHICS	1 MILES	2 MILES	5 MILES
POPULATION	41,570	272,927	769,193
AVERAGE HH INCOME	\$105,873	\$94,619	\$88,738
# BUSINESSES	2,505	20,517	56,192
# EMPLOYEES	23,863	176,903	598,020

Sheryl Vickers, CCIM

Owner/Broker

Call or Text: (816) 916-8400

Exterior Photos



4914 Johnson Drive



Sheryl Vickers, CCIM

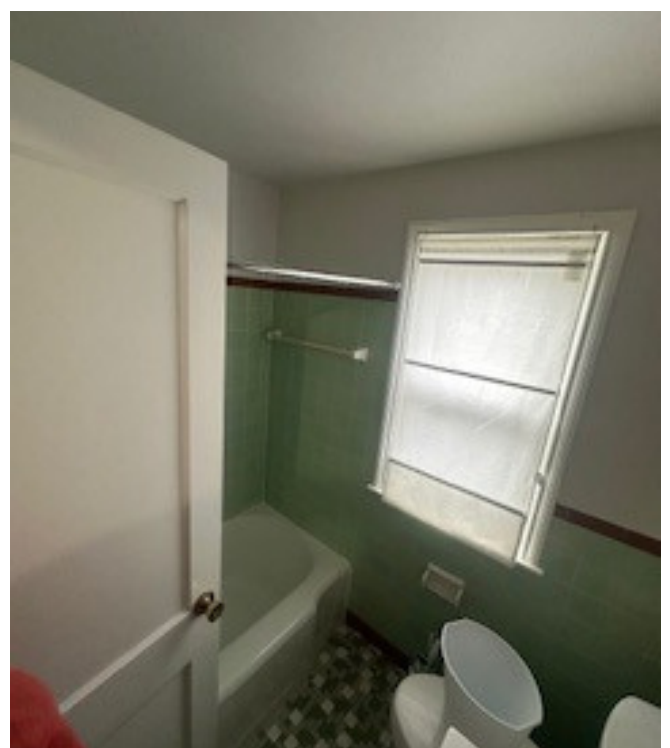
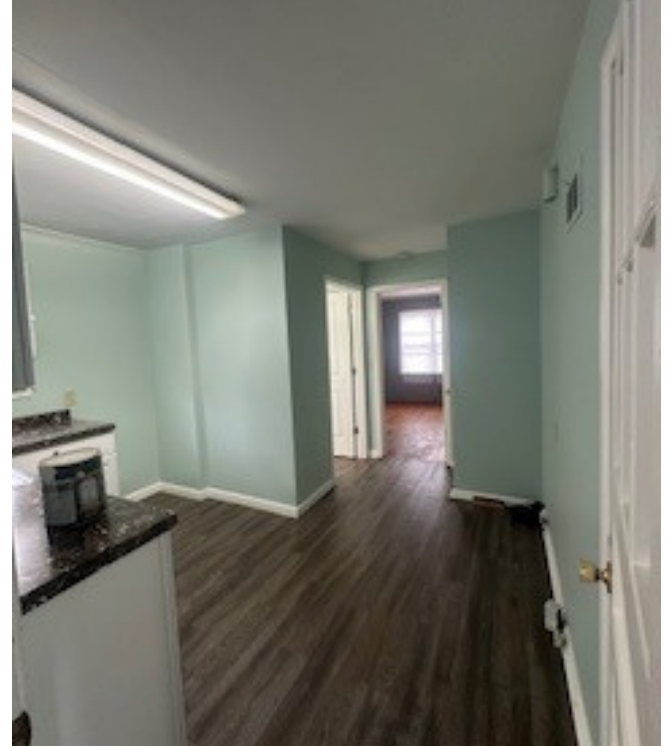
Owner/Broker

Call or Text: (816) 916-8400

Interior Photos



4914 Johnson Drive



Sheryl Vickers, CCIM

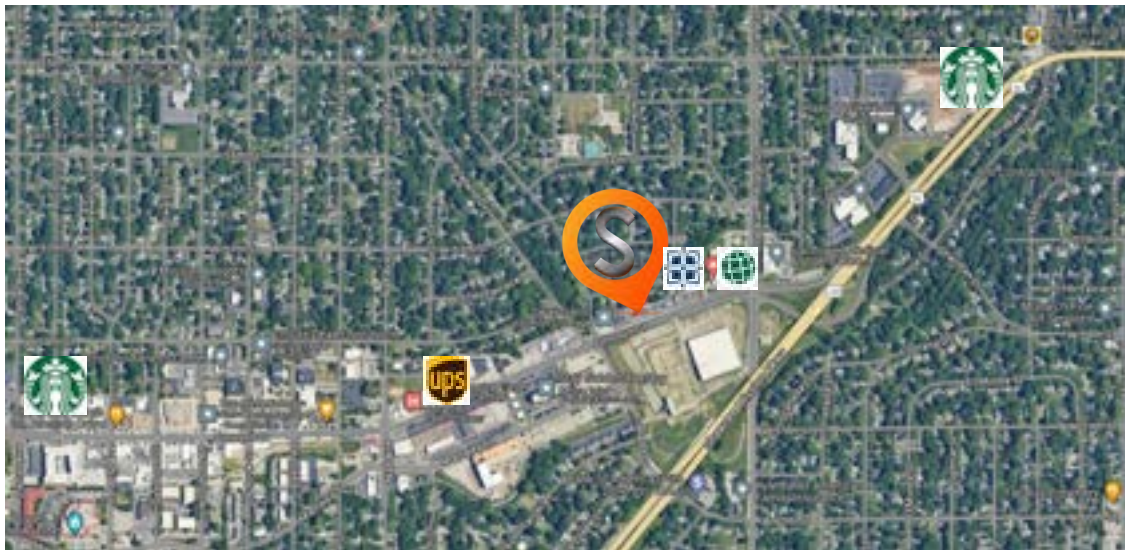
Owner/Broker

Call or Text: (816) 916-8400

Aerial View



4914 Johnson Drive



Sheryl Vickers, CCIM

Owner/Broker

Call or Text: (816) 916-8400