



**229 9<sup>TH</sup> STREET**  
SAN FRANCISCO | CA

**FOR LEASE**  
1,213 SQUARE FEET + BASEMENT



# F E A T U R E S

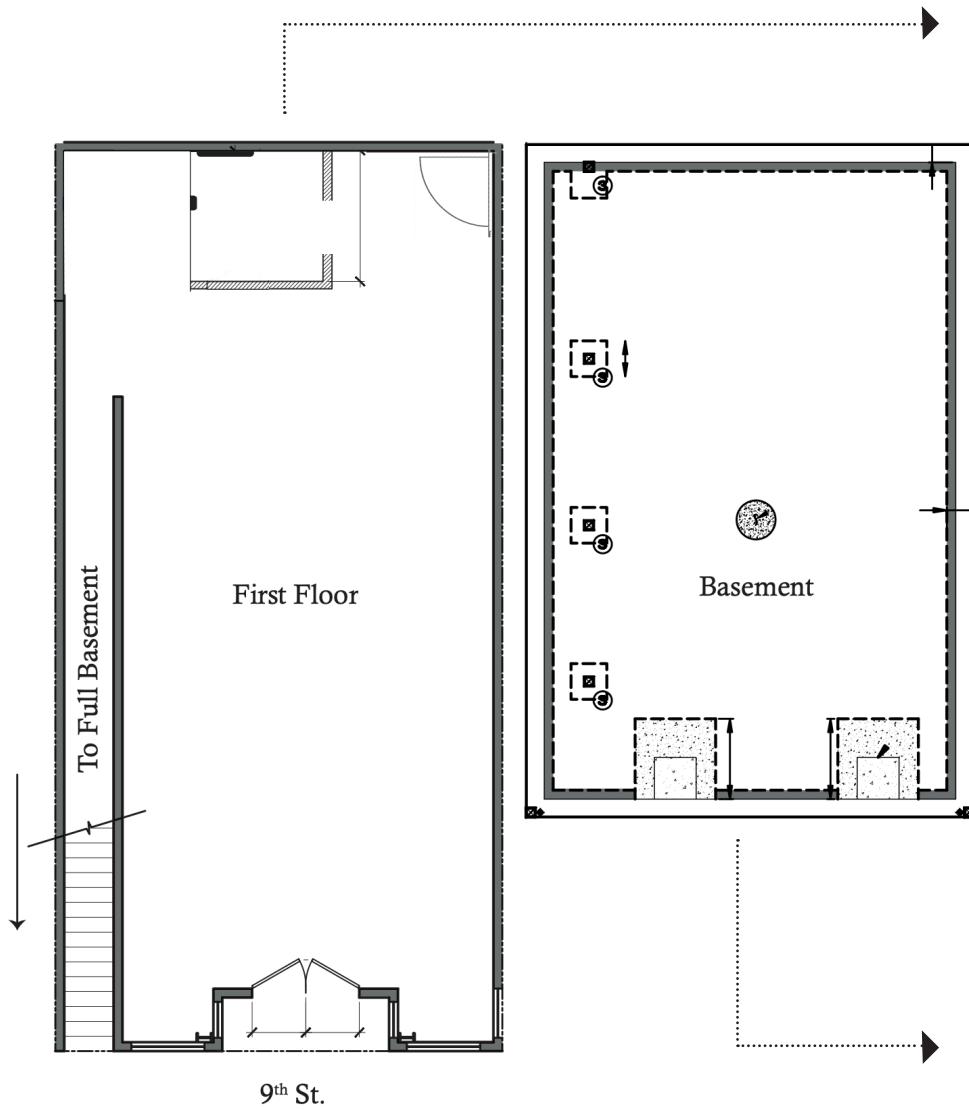
Located in the heart of San Francisco's SOMA district, this prime corner retail/cafe space is available on the busy 9th Street corridor. Beautiful hardwood floors and high ceilings with large windows that flood the space with plenty of natural light. There is also a full basement included with exposed brick and timber. Open floor plan and RCD Zoning lends to many uses. Nearby neighbors include Driftwood, Azucar Lounge, Viva la tarte, Cellarmaker Brewing Co, Trader Joes, and Sightglass Coffee.

- +/- 1,213 SF
- Prime corner on busy 9th Street corridor in San Francisco's South of Market District (SOMA)
- RCD Zoning / many uses considered
- Warm shell with hardwood floors, smooth white walls, and high ceilings
- Corner location, big windows with abundant light
- Cooking ventilation possible
- Full basement with exposed brick and timber
- Excellent signage & visibility
- Open floor plan with vintage details
- Early 20th century building with period details
- Located in the heart of San Francisco's SOMA district surrounded by trending restaurants, vibrant nightlife, and several new residential developments
- Asking rent: \$2,950 per month





# Floor Plans





# SOMA

San Francisco's South of Market (SOMA) neighborhood is experiencing historic levels of growth in the housing, retail, office, and restaurant sectors. The transit infrastructure, technology offices, and proximity to sports and entertainment venues have collectively enhanced this dynamic submarket, while plans to build over 8,000 new homes in the next twenty years continue to increase the neighborhood's density. This significant growth is highlighted by major development projects such as 5M, Salesforce Tower, Whole Foods and the Flower Mart - all of which will redefine the San Francisco skyline.

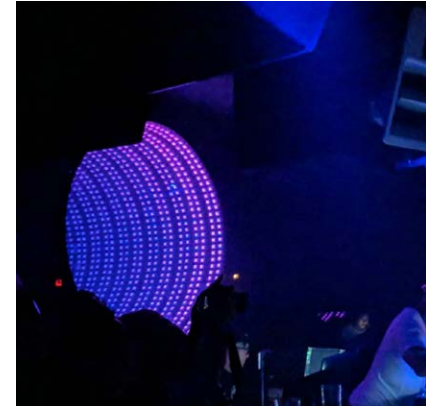
The San Francisco Museum of Modern Art (SFMOMA), the Contemporary Jewish Museum, and the Yerba Buena Center for the Arts are a few of the museums rooted in this eclectic neighborhood. Moscone Center, San Francisco's largest convention and exhibition complex is also located in SOMA and in the immediate vicinity of the subject property.



**RAVEN**



**TRADER JOE'S**



**AUDIO NIGHTCLUB**



**SIGHTGLASS COFFEE**



**DRIFTWOOD**



**FITNESS SF**



**BASIL THAI**



**CELLARMAKER BREWING CO.**



**HARVEST URBAN MARKET**



# Neighborhood







maven  
RETAIL

**JOAN RUYLE**

office 415.404.7313

joan@mavenproperties.com

DRE #02006025

**SANTINO DEROSE**

office 415.404.7337

sd@mavenproperties.com

DRE #01338326

NOTICE: This information has been secured from sources we believe to be reliable but we make no representations, warranties, express or implied, as to the accuracy of the information. Listing broker has been given enough information to provide only a preliminary interest in the property. The materials are not to be considered fact. The information contained herein is not a substitute for thorough due diligence investigation. References to square footage, zoning, use, or age are approximate. Please contact the San Francisco Planning Department to verify zoning at (415) 558-6378, as neither broker or landlord represent that this space is suitable for your use. Tenant or Buyer must verify the information at their own expense and bears all the risk for any inaccuracies. By receiving these materials you are agreeing to the disclaimers set forth herein. DRE#01878802

466 Green Street Suite #203 | San Francisco, CA 94133 | 415-781-7700 | [www.mavenproperties.com](http://www.mavenproperties.com)