

Perfect-Sized Suite in Busy
Retail Center

956 W. CHERRY ST | LOUISVILLE, CO 80027
UNIT 105

Size: 982 SF
Rate: \$25/SF + NNNs
Available Now

RETAILER'S PARADISE

Do you hear that? It's probably just your cash register ringing in anticipation of you leasing this location-loaded retail suite in Louisville. It's fully multifunctional and ready to mark the spot for your budding business. And with neighbors like these, customers are bound to come knocking. Pizza, coffee and chiropractic (the survival trifecta for a long day of shopping and carrying heavy bags) are all just steps away.

PROPERTY HIGHLIGHTS

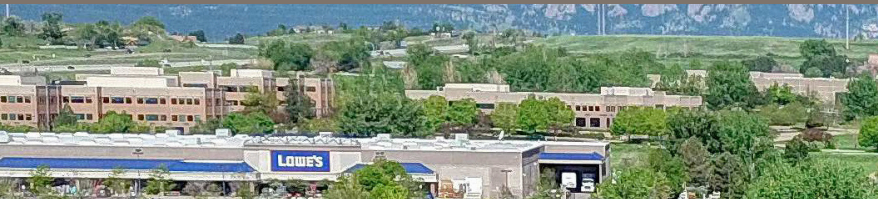
- Perfect-sized end unit
- Lots of light from big store-front windows
- Monument and suite signage
- Newly remodeled shared restrooms
- Ample customer and employee parking



CLICK HERE
for virtual tour

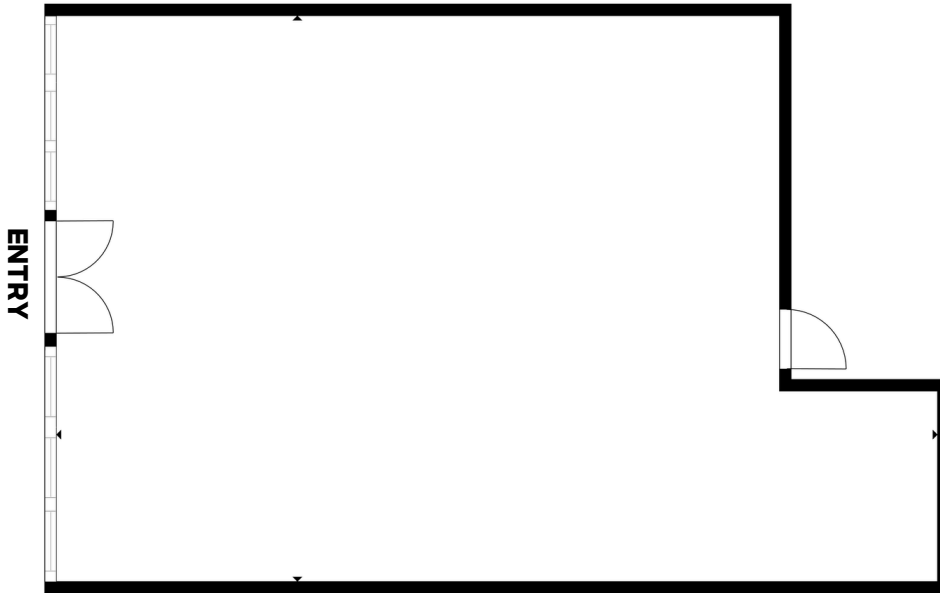
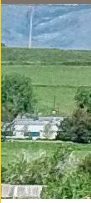


LEARN MORE ABOUT THIS PROPERTY
MarketRealEstate.com



market

REAL ESTATE



[CLICK HERE](#)
for virtual tour



LEARN MORE ABOUT THIS PROPERTY
MarketRealEstate.com

HEIDI SCHAMBER
303 444 4344
Heidi@MarketBoulder.com

BRITTANY BOUDREAU
303 444 0566
Brittany@MarketBoulder.com

