

NORTHLAND PLAZA

RETAIL FOR LEASE

2605-2777 NORTHLAND PLAZA DRIVE, COLUMBUS, OH 43231



DAVIS GILLIE ADVISOR

MOBILE 614.499.8411 | **DIRECT** 614.334.7802
DGILLIE@EQUITY.NET



MATT COOPER SENIOR VICE PRESIDENT

MOBILE 614.403.4732 | **DIRECT** 614.334.7831
MCOOPER@EQUITY.NET



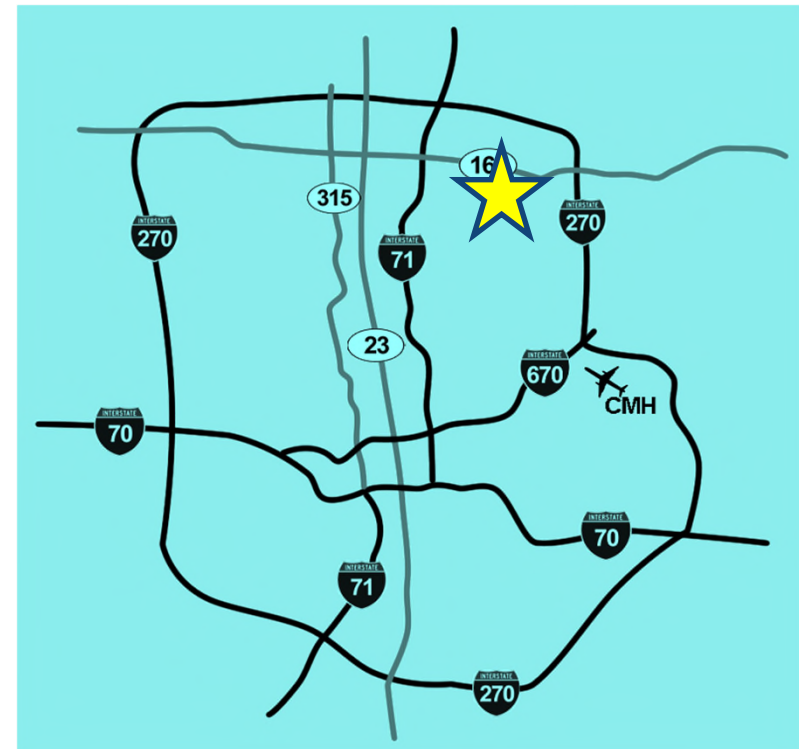
NORTHLAND PLAZA

RETAIL FOR LEASE

2605-2777 NORTHLAND PLAZA DRIVE, COLUMBUS, OH 43231

PROPERTY HIGHLIGHTS

- +/- 51,250 SF space available Sept. 2026 (\$6.00 psf NNN)
- +/- 13,560 SF space available now (\$10.00 psf NNN)
- +/- 6,930 SF space available now (\$12.00 psf NNN)
- +/- 6,341 SF space available now (\$12.00 psf NNN)
- +/- 3,500 SF space available now (\$12.00 psf NNN)
- +/- 3,219 SF space available now (\$12.00 psf NNN)
- 36,661 vehicles per day on Dublin Granville Road (State Route 161)
- Good visibility with prominent pylon signage
- Ample parking
- \$2.75 psf estimated operating expenses

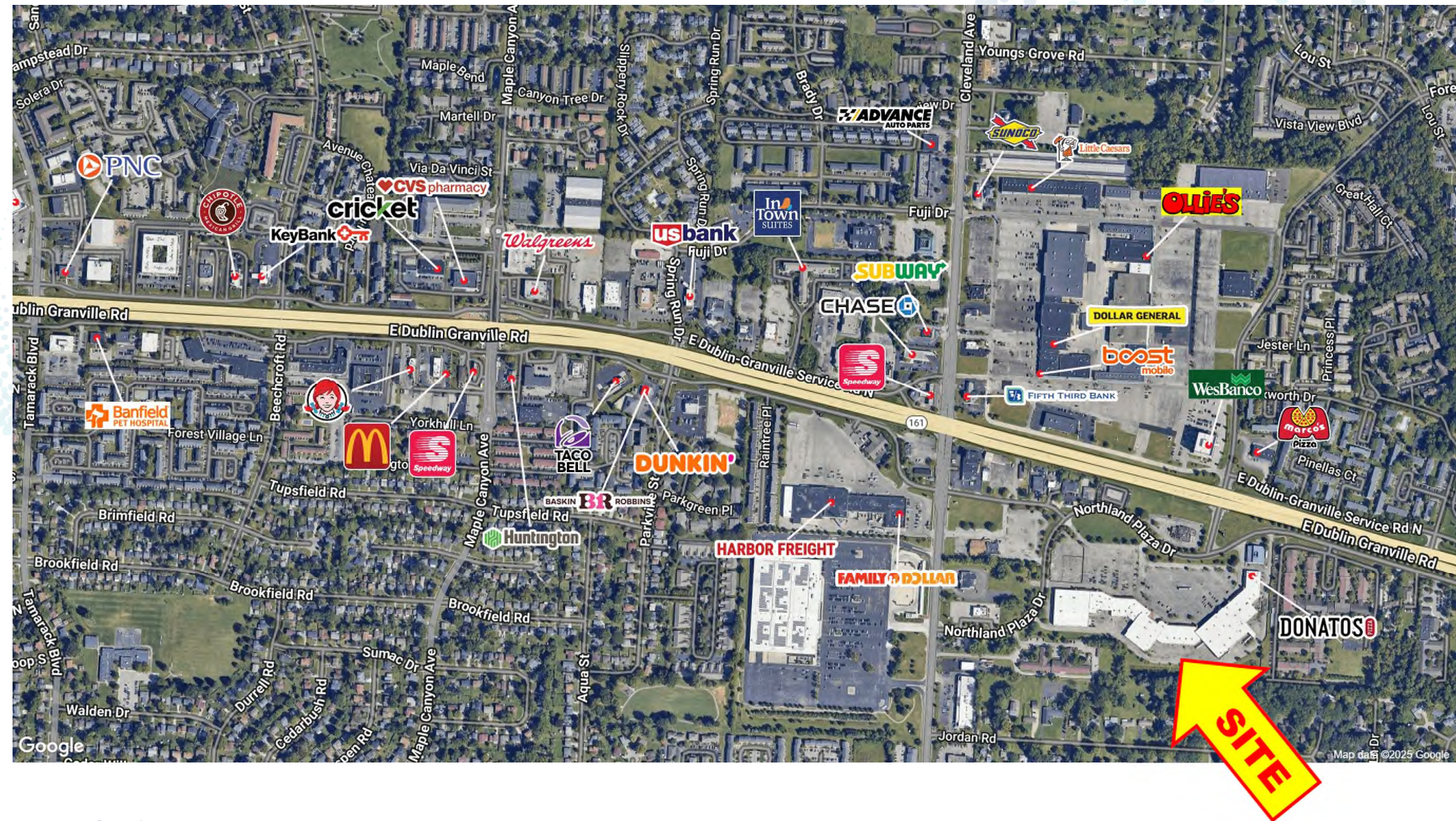


BUILDING PLAN

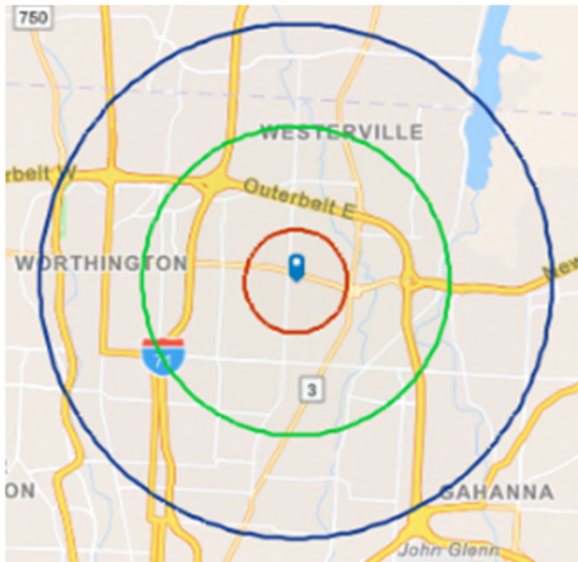


TENANTS	SF.	
A	SCARE-A-TORIUM	40,000
A01	DONATO'S PIZZA	1,600
A02	GNC	1,600
A03A	IFTIN CHILD CARE	10,752
A07	AVAILABLE	13,560
B	AVAILABLE	51,250
B01	AVAILABLE	3,219
B02-02A	AVAILABLE	6,341
B03	AVAILABLE	3,500
B04	AVAILABLE	6,390
B05	FAMILY THRIFT	1,470
C	FAMILY THRIFT	27,556
C01	FAMILY THRIFT	1,470
C02	ST. JAMES	2,332
C03	CYBER CONNECTIONS	3,085
C04	ADULT DAY CARE	996
C05	ADULT DAY CARE	1,523
C06	ADULT DAY CARE	3,892
C08A	ADULT DAY CARE	5,700
C09A	BLOOD PLASMA	5,100
C11	BLOOD PLASMA	2,700
C12	BLOOD PLASMA	4,800
LL01	STEAK 'N SHAKE	3,700
LL02	PAD SITE	.99 AC
LL04	FIESTA JALISCO	5,693
LL05	AVAILABLE	1.13 AC
LL07	BETTER BUY	7,500

AERIAL



1-MILE RADIUS DEMOS



KEY FACTS

21,770
Population

2.6
Average
Household Size

34.3
Median Age

\$61,045
Median Household Income

BUSINESS

578

Total Businesses

5,517

Total Employees

EDUCATION

11%

No High School
Diploma

33%

High School
Graduate

31%

Some
College

25%

Bachelor's/Grad/Prof
Degree

INCOME



\$28,640
Per Capita
Income



\$61,045
Median
Household
Income



\$75,190
Average
Household
Income

EMPLOYMENT

51.8
White
Collar %

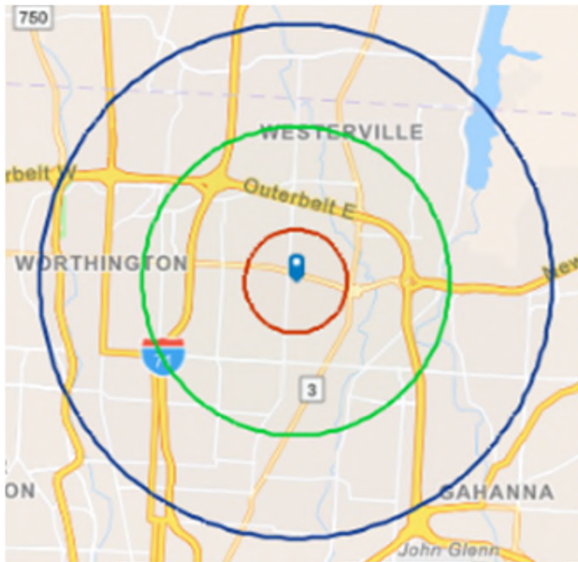
28.9
Blue
Collar %

19.2
Services
%

equity | brokerage

The information contained herein has been obtained from the property owner or other sources that we deem reliable. Although we have no reason to doubt its accuracy, no representation or warranty is made regarding the information, and the property is offered "as is." The submission may be modified or withdrawn at any time by the property owner.

3-MILE RADIUS DEMOS



KEY FACTS

131,497
Population

2.5
Average
Household Size

35.1
Median Age

\$61,889
Median Household Income

BUSINESS

4,845

Total Businesses

63,315

Total Employees

EDUCATION

12%

No High School
Diploma

28%

High School
Graduate

28%

Some
College

32%

Bachelor's/Grad/Prof
Degree

INCOME



\$32,297
Per Capita
Income



\$61,889
Median
Household
Income



\$82,514
Average
Household
Income

EMPLOYMENT

58.4
White
Collar %

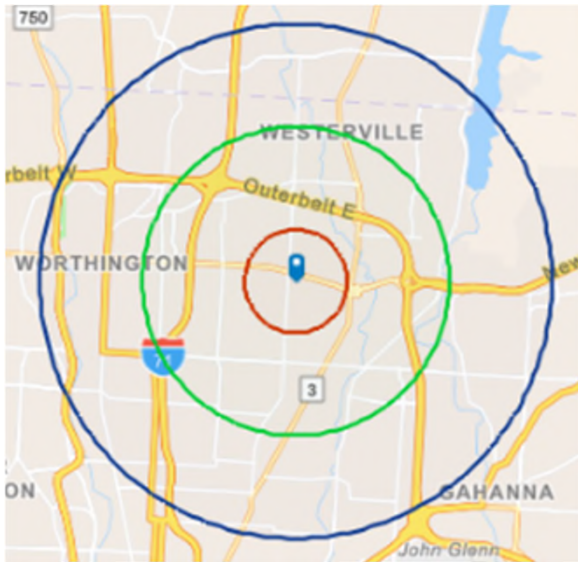
22.8
Blue
Collar %

18.8
Services
%

equity | brokerage

The information contained herein has been obtained from the property owner or other sources that we deem reliable. Although we have no reason to doubt its accuracy, no representation or warranty is made regarding the information, and the property is offered "as is." The submission may be modified or withdrawn at any time by the property owner.

5-MILE RADIUS DEMOS



KEY FACTS

309,244
Population

2.4
Average
Household Size

36.7
Median Age

\$75,803
Median Household Income

BUSINESS



11,784

Total Businesses



155,154

Total Employees

EDUCATION



9%

No High School
Diploma



23%

High School
Graduate



25%

Some
College



43%

Bachelor's/Grad/Prof
Degree

INCOME



\$41,528

Per Capita
Income



\$75,803

Median
Household
Income



\$101,234

Average
Household
Income

EMPLOYMENT



66.0

White
Collar %



17.9

Blue
Collar %



16.1

Services
%

equity | brokerage

The information contained herein has been obtained from the property owner or other sources that we deem reliable. Although we have no reason to doubt its accuracy, no representation or warranty is made regarding the information, and the property is offered "as is." The submission may be modified or withdrawn at any time by the property owner.