



---

***2819 Palo Alto Rd,***  
San Antonio, TX 78211

---

Sanjay Misra  
tm@qpmenterprises.com

# PROPERTY INFORMATION

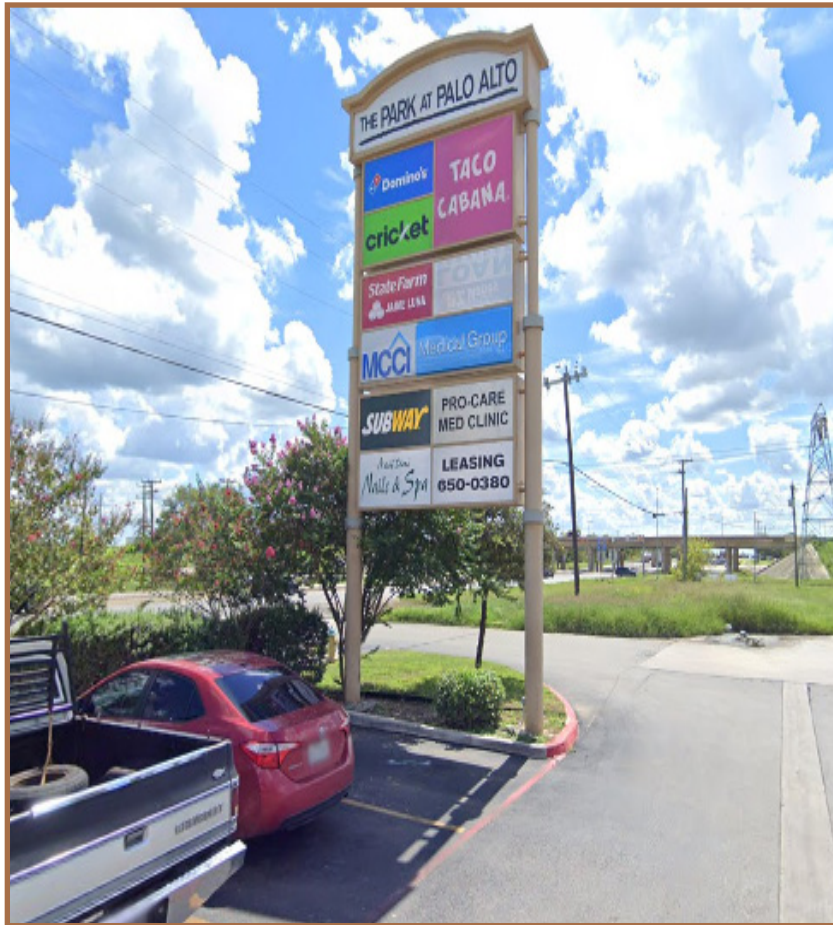
## Highlights

Space located in highly occupied retail building on heavy traffic area. Great visibility and access. Perfect for small office, retail or cleaner pick up station. Center Type Retail Center Parking 90 Spaces Center Properties 2 Frontage 379' on I-410 Fwy.

## Details

Property Type	Retail
Year Built	2007
Gross Leasable Area	21,400 SF
Parking Spaces	90
Total Land Area	4.88 AC
Rate	\$20.00 / SF / Yr
Available	\$1,120 SF











# Site Plan

