

# FOR SALE

±1.90 Acres Available

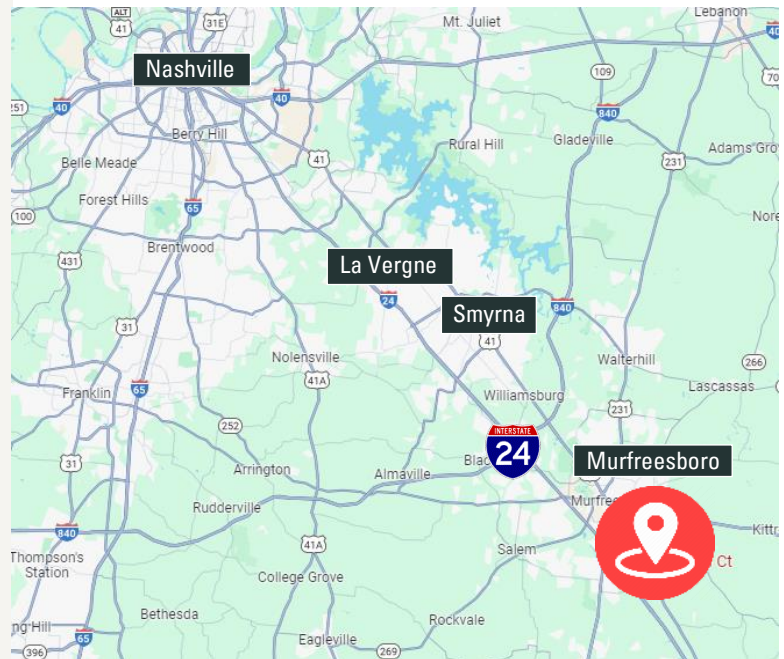
Prime Land Purchase Opportunity that Offers  
Visibility from I-24

6 Mayoral Court, Murfreesboro, TN 37127



## HIGHLIGHTS

- ±1.90 Acres
- Sale Price: \$799,000
- Site offers visibility from I-24 (104,200 AADT)
- Immediate access to I-24 on/off ramp
- Zoned CH (Commercial Highway)
  - Permits a wide range of commercial uses and encourages the continued development of general commercial operations
- Site provides easy ingress/egress



**Jonathan Douillard**  
First Vice President  
O: 615.345.7233  
jdouillard@charleshawkinsco.com

**Jackson Paisley**  
Vice President  
C: 931.644.0689  
jpaisley@charleshawkinsco.com

Exclusively listed by:  
Charles Hawkins Co.  
2920 Berry Hill Dr., Ste 100  
Nashville, TN 37204  
T: 615.256.3189

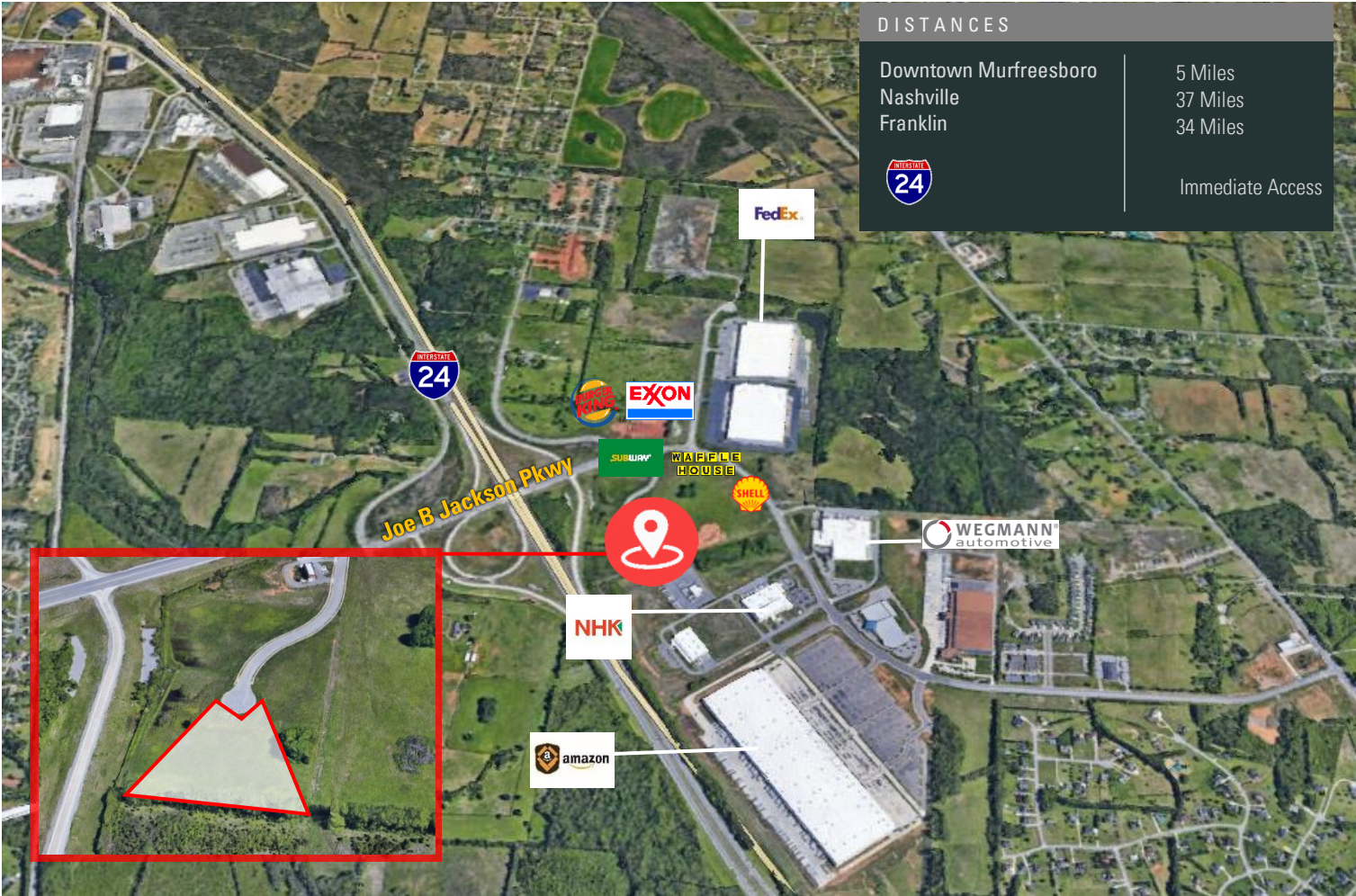


For Sale  
±1.9 Acres

6 Mayoral Court  
Murfreesboro, TN 37127  
Rutherford County

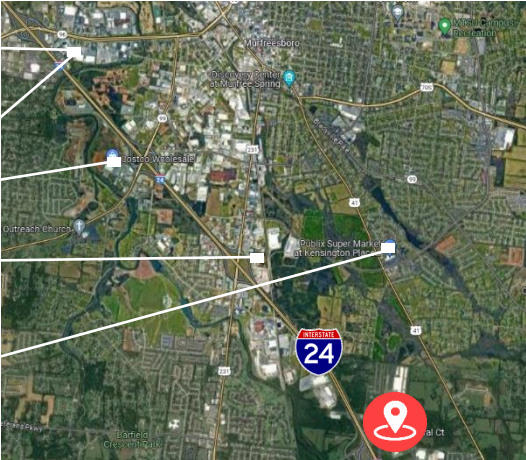
CHARLES  
HAWKINS CO.

AERIAL



DEMOGRAPHICS

	1 MILE	3 MILES	5 MILES
	10,547	75,551	211,726
	3,745	28,120	78,500
	\$101,425	\$79,225	\$87,799



**Jonathan Douillard**  
First Vice President  
O: 615.345.7233  
jdouillard@charleshawkinsco.com

**Jackson Paisley**  
Vice President  
C: 931.644.0689  
jpaisley@charleshawkinsco.com

Exclusively listed by:  
Charles Hawkins Co.  
2920 Berry Hill Dr., Ste 100  
Nashville, TN 37204  
T: 615.256.3189