



579 E 800 N  
VALPARAISO

579 E 800 N · VALPARAISO



@properties | CHRISTIE'S  
INTERNATIONAL REAL ESTATE

LP LUXURY  
PORTFOLIO  
INTERNATIONAL



**JO MELLEN** BROKER

219.508.5832 mobile  
219.531.2288 office  
jomellen@atproperties.com



579 E 800 N • VALPARAISO







## 579 E 800 N WHEATFIELD, INDIANA

### FEATURES

This 120 acre property boasts a blend of wooded and cleared areas, presenting endless possibilities. Whether you desire an off-the-grid lifestyle, or an investment opportunity, this property has it all.

- 2 houses and pole barn.
- Self-contained off grid solar panels with storage batteries, producing approximately 3500 watts. Able to power all the necessary comforts.
- 2-year-old deep well with water softener.
- 6 shallow wells. Garage, barn, outside of barn on north side, garden, in front of house campground.
- 3 additional heat sources not dependent on the furnace and do not need electricity to function.
- 2 miles of drivable walking trails through the woods.
- 300-yard shooting range with some steel targets.
- Private campground with port-a-potty.
- Fruit Trees.
- Wired alarm system with siren and 4 cameras.
- 4 permanent enclosed all-weather deer stands.
- Multiple Agricultural fields.
- Horses and farm animals allowed.



**JO MELLEN** BROKER

219.508.5832 mobile  
219.531.2288 office

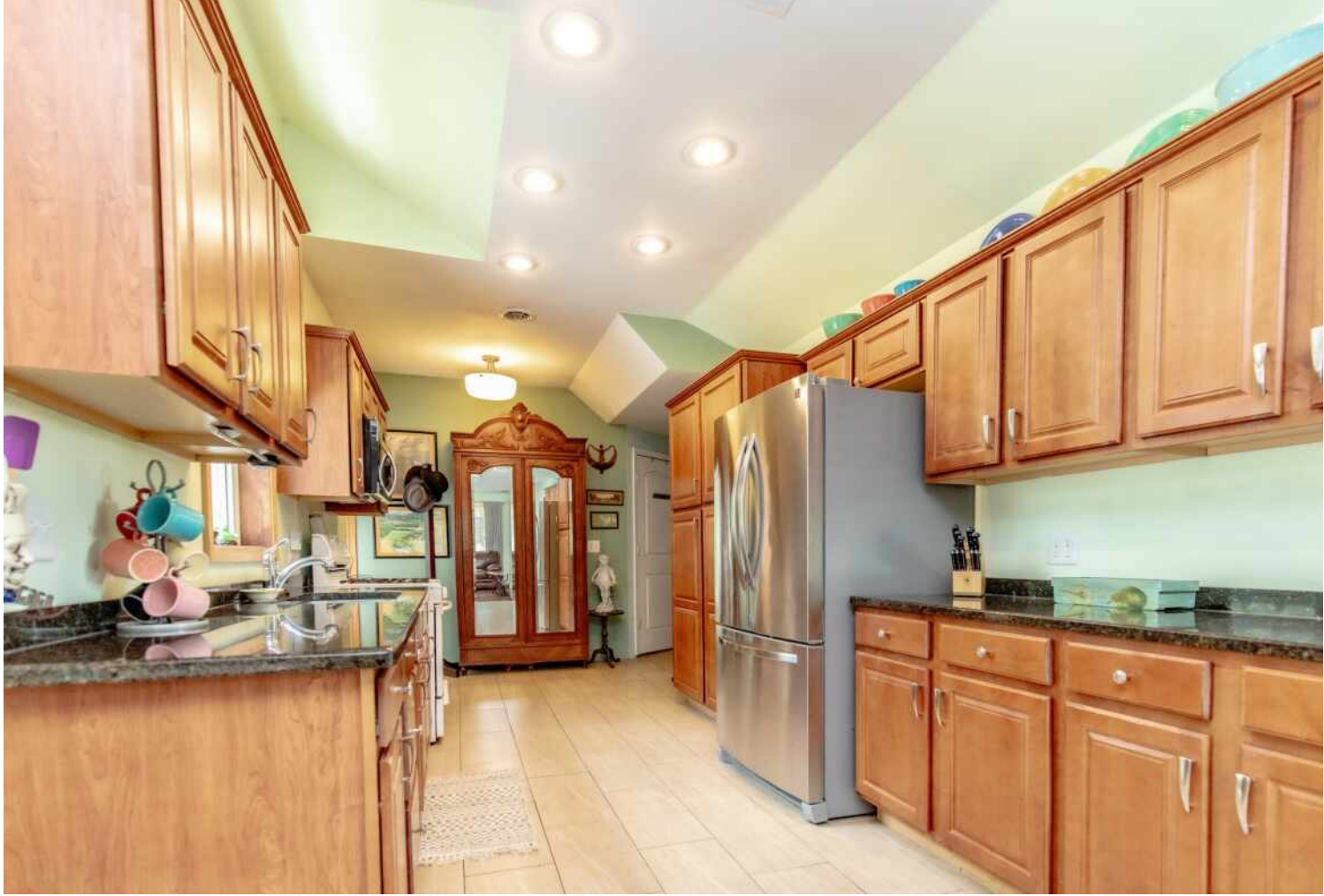
[jomellen@atproperties.com](mailto:jomellen@atproperties.com)













































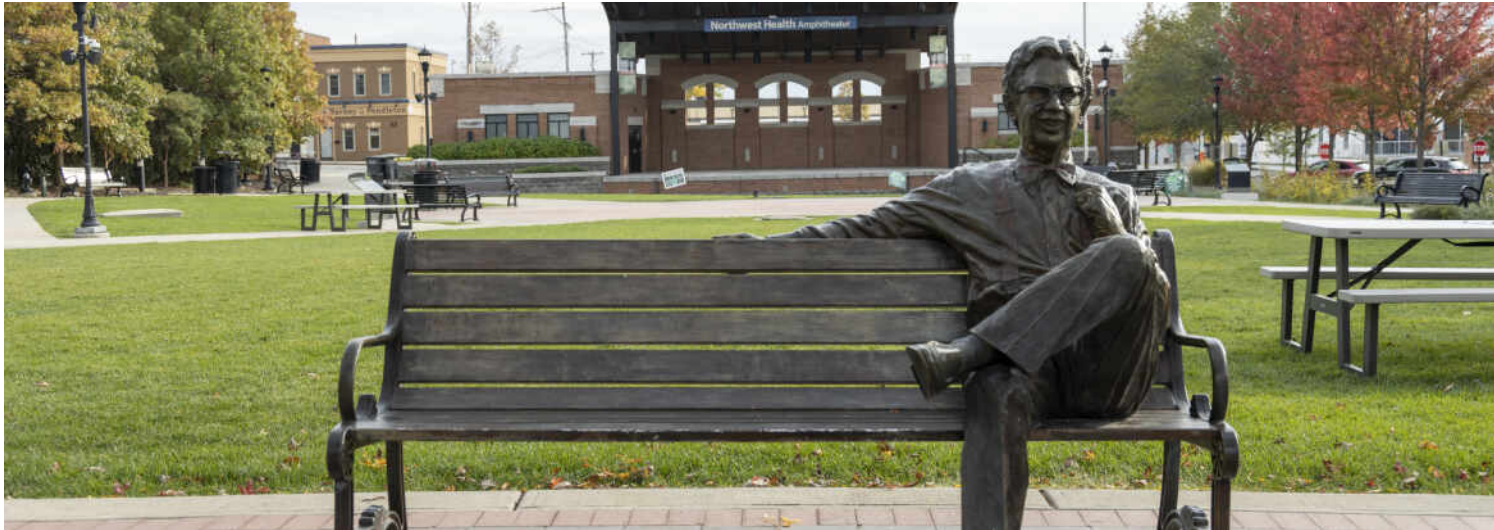












KNOWN AS THE “VALE OF PARADISE,” **VALPARAISO** IS A BURGEONING CITY WITH AN ENGAGED COMMUNITY.

*Locals love that Valparaiso is a vibrant community with a lot to offer. Annual events, recreational opportunities, and convenient transportation options are among the many highlights of this growing city.*

One of Valparaiso’s main attractions is its downtown area. The site of year-round events and local happenings, downtown Valparaiso is home to Central Park Plaza, Porter Health Amphitheater, and Urschel Pavilion, as well as several locally owned shops and restaurants. Among the community’s noteworthy events are the Chocolate Walk, Valparaiso Wine Festival, Valpo Brewfest, Fall Harvest Festival, Porter County Fair, and Valparaiso Popcorn Festival, which honors former resident Orville Redenbacher. Residents are also treated to a farmers market and a summer concert series.

Boasting 238 acres, Sunset Hill Farm County Park is a hub of activity offering trails, camps, field trips, fitness programs, birdwatching, and gardening. Another park that locals frequent is Rogers-Lakewood Park. The 122-acre park offers hiking, biking, fishing, boating, and picnicking.

Valparaiso’s thriving residential market features newly established subdivisions and historic downtown neighborhoods. The city’s 15-plus parks and 20 miles of pathways find their way throughout these neighborhoods, giving residents ample opportunity to spend time outdoors.

When it comes to public transportation, Valparaiso has it covered. The ChicaGO Dash provides express bus service from downtown Valparaiso to downtown Chicago. Meanwhile, the Valpo South Shore Connect takes bus riders from downtown to the Dune Park South Shore train station, which provides service to South Bend and Chicago. Within the city, residents can travel throughout Valparaiso on one of five V-Line bus routes.











@properties® | CHRISTIE'S  
INTERNATIONAL REAL ESTATE

*Leading* REAL ESTATE  
COMPANIES  
OF THE WORLD®

LP  
LUXURY  
PORTFOLIO  
INTERNATIONAL

