

The Colliers logo, featuring the word "Colliers" in white serif font on a blue rectangular background with a thin yellow and red horizontal stripe at the bottom.

Colliers

A photograph of a single-story office building with a beige facade and a green roofline. Several large palm trees are planted around the building. A blue sign with white text is mounted on the building's facade. Two cars are parked in the lot in front of the building.

Your Name
Here

Office for Sale or Lease

Call for Pricing

Matthew McKeever CCIM, SIOR
Executive Managing Director
+1 407 362 6137
matthew.mckeever@colliers.com

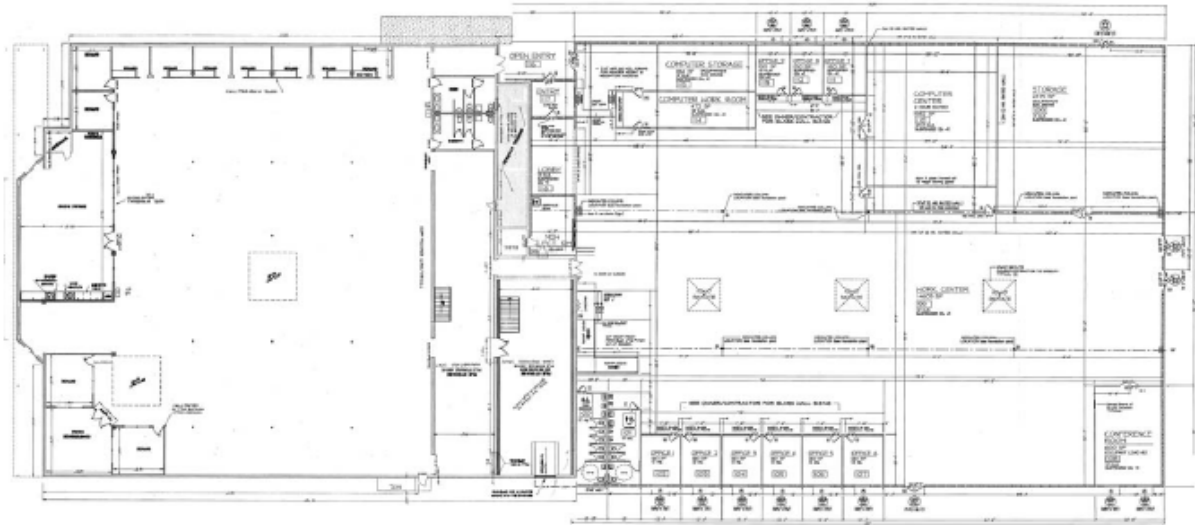
Jon C. Thomas II
Associate
+1 352 316 2143
jon.thomas@colliers.com

1417 N. Magnolia Avenue
Ocala, FL

- Single-story flex office space
- 46,812 SF
- Built out space | Previous call center
- Building signage
- 8/1,000

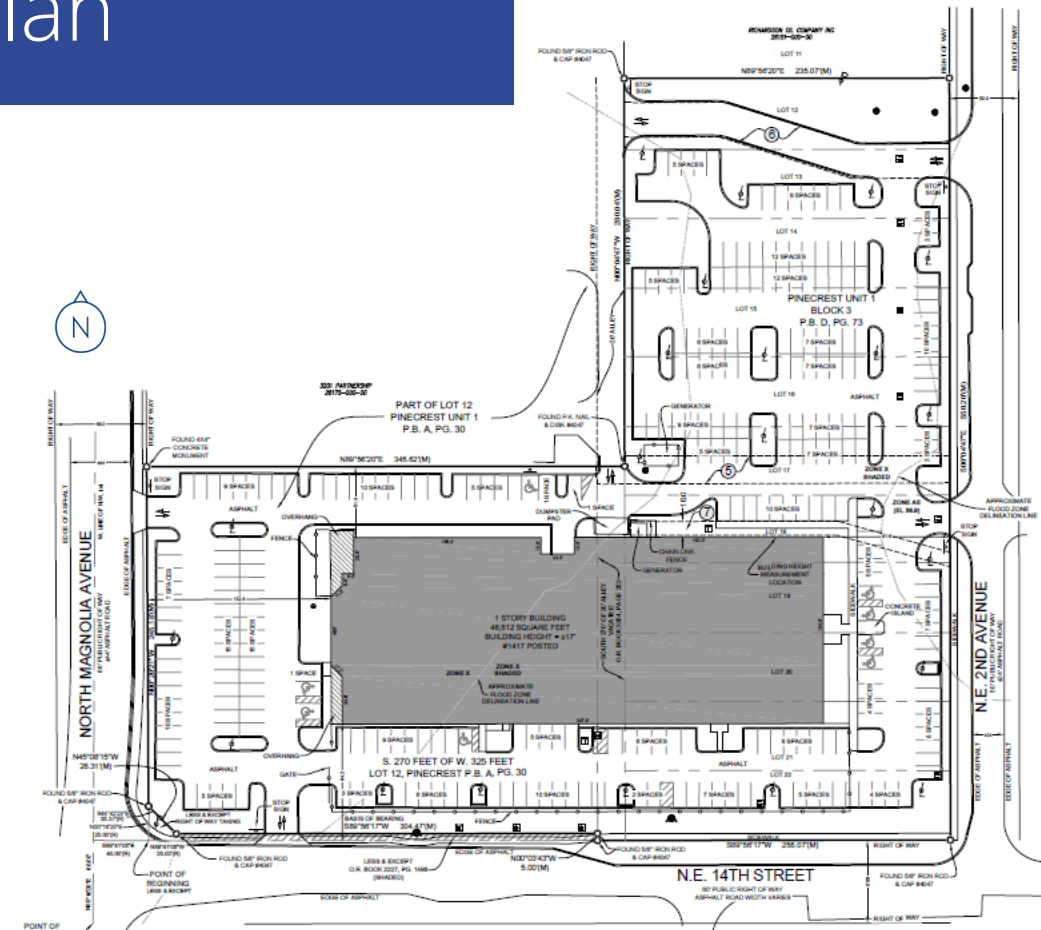
46,812 SF

Floor Plan



5.01 Acres

Site Plan



Accelerating success.

46,812 SF

Property Gallery



Old US Hwy 301

1417 N. Magnolia Avenue

N. Magnolia Avenue

NW 14th Street

NE 8th Road

New 14th Street overpass

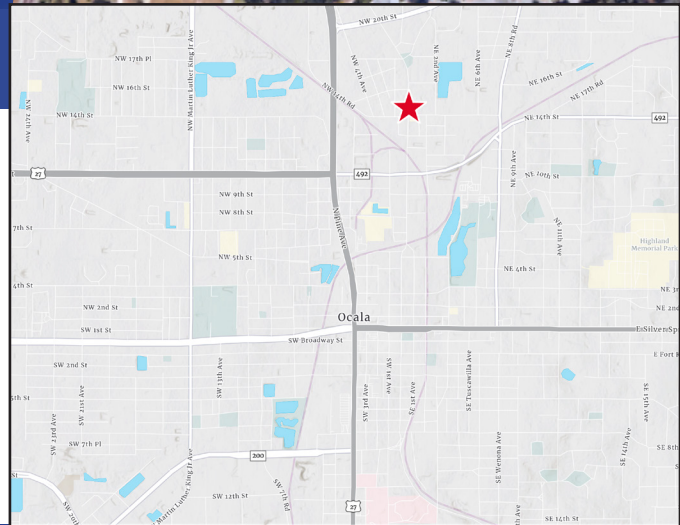
Contact us to tour:



Matthew McKeever CCIM, SIOR
Executive Managing Director
+1 407 362 6137
matthew.mckeever@colliers.com



Jon C. Thomas II
Associate
+1 352 316 2143
jon.thomas@colliers.com



This document has been prepared by Colliers International for advertising and general information only. Colliers International makes no guarantees, representations or warranties of any kind, expressed or implied, regarding the information including, but not limited to, warranties of content, accuracy and reliability. Any interested party should undertake their own inquiries as to the accuracy of the information. Colliers International excludes unequivocally all inferred or implied terms, conditions and warranties arising out of this document and excludes all liability for loss and damages arising there from. This publication is the copyrighted property of Colliers International and/or its licensor(s). ©2021. All rights reserved.