



515 V Street NE
Washington, DC 20002

FOR SALE

19,289 SF Building

0.58 AC Lot

151,590 SF Maximum
Potential Buildout

Heavy industrial facility near Rhode Island Metro



Air conditioned
warehouse



0.3 Miles from
Rhode Island Ave Metro



Ample parking in
front of building



Secured gated
lot



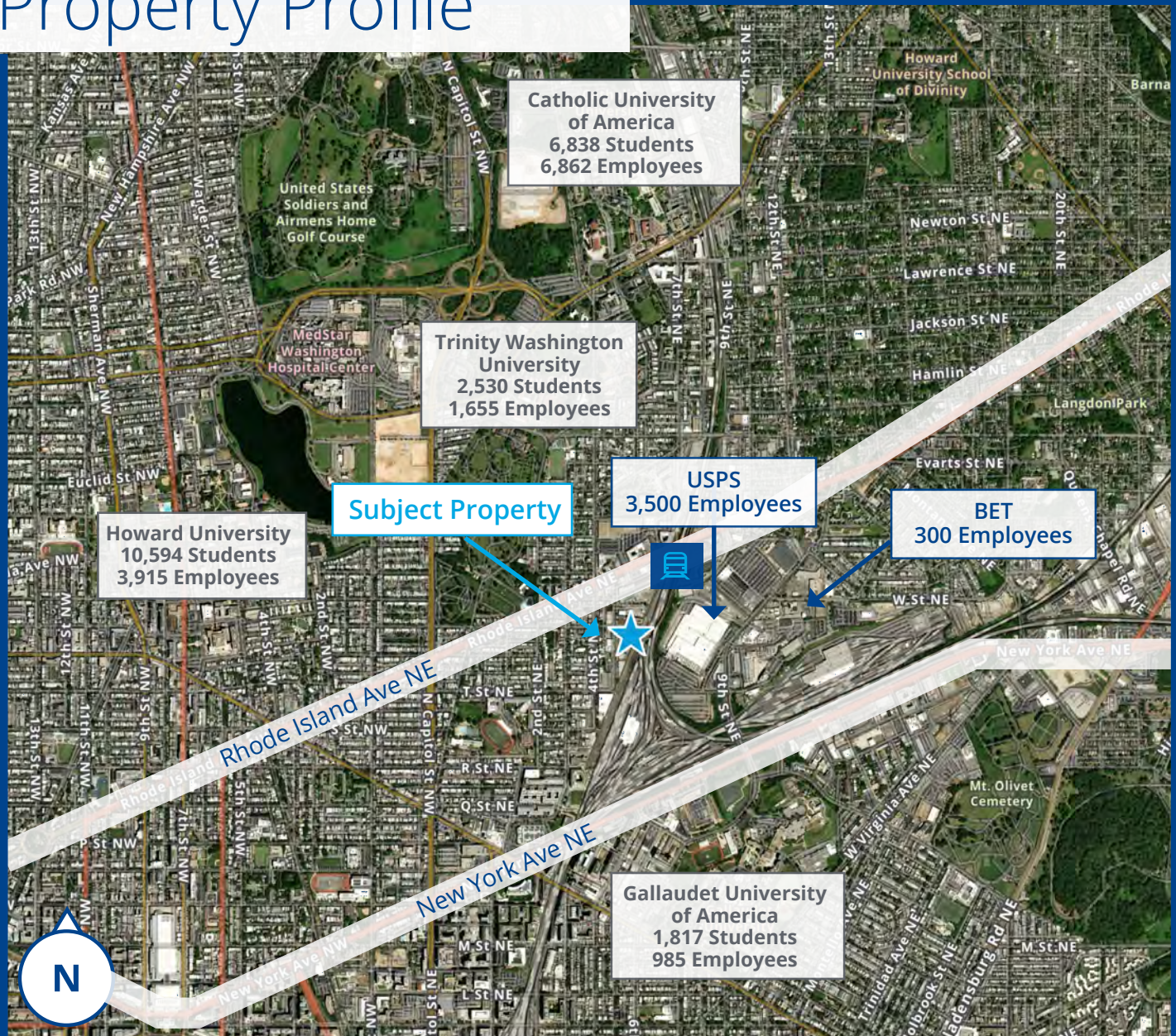
20' Clear
ceilings



2 Drive-in
doors

515 V Street NE

Property Profile



19,289 sf
Building size

.58 acre
Lot size

151,590+/- sf
Maximum potential
build out

3-phase
Power

Available
Ample mezzanine office
and a small shop office

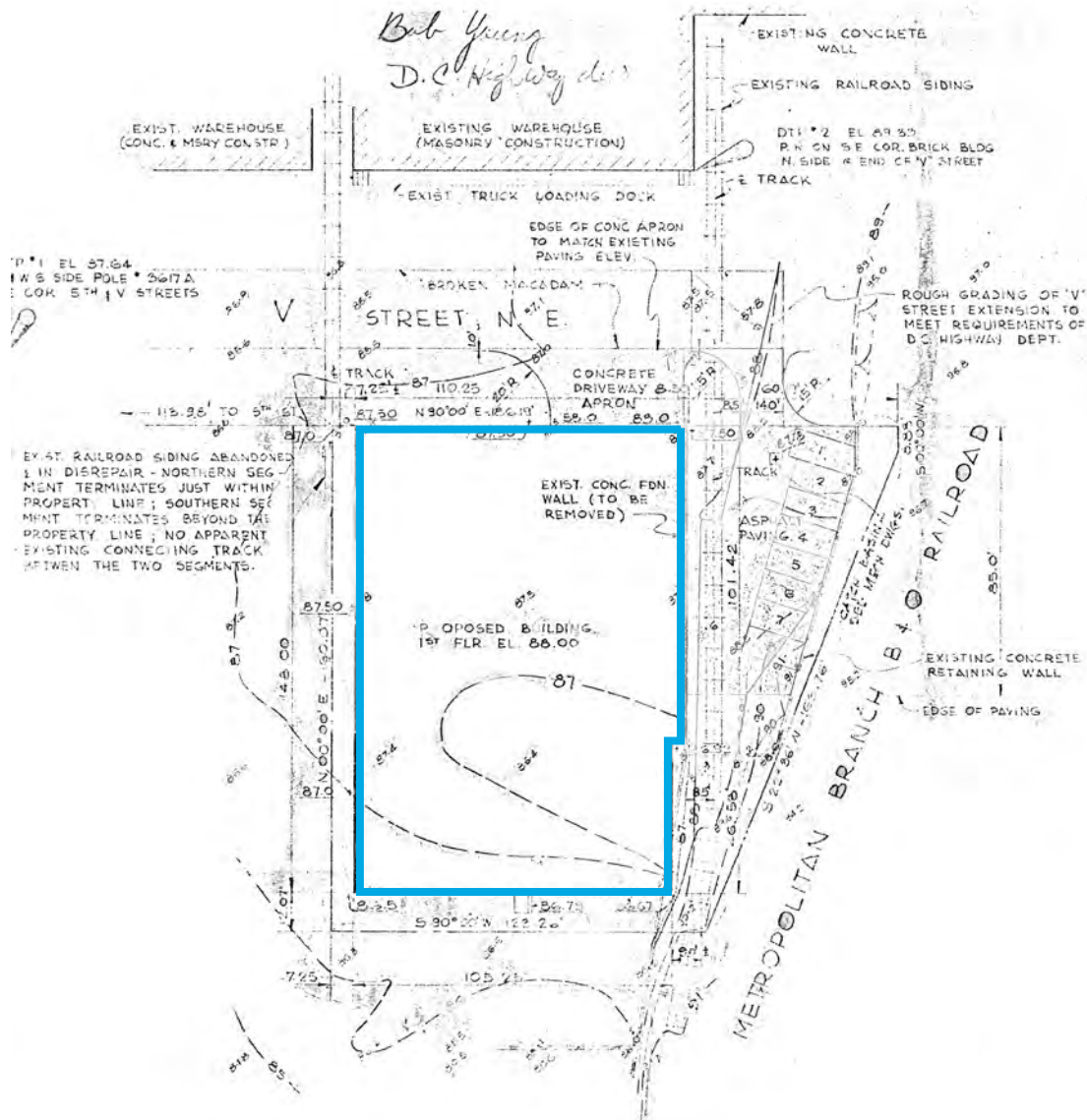
20'
Clear ceiling

Two (2) 14' H
Drive-in overhead door

PDR-4
Zoning

6 or 90'
F.A.R.

Wet
Sprinkler



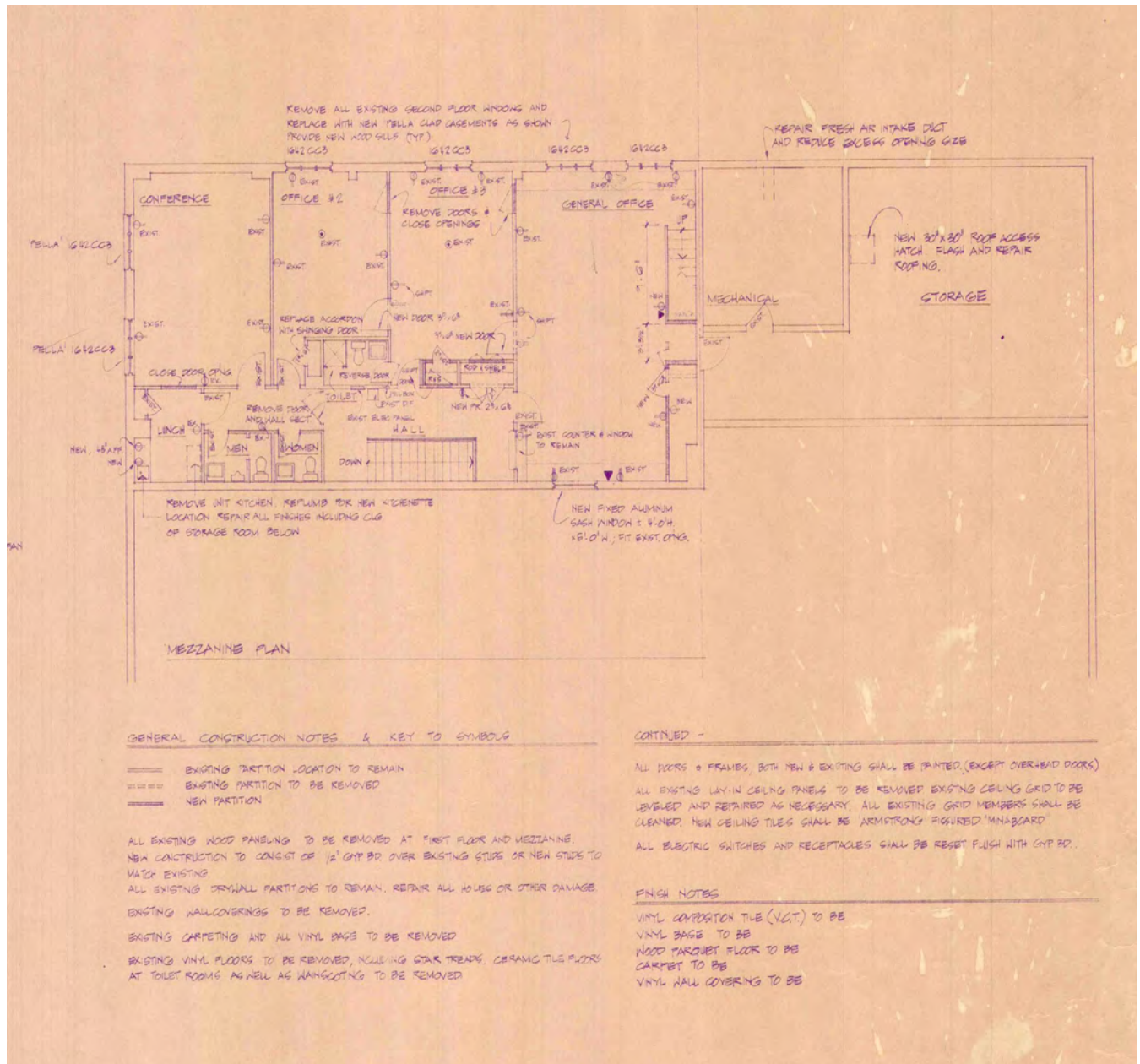
Floor Plan

Building Area:

Warehouse: 19,289 SF

Gross: 19,289 SF

Gross: 19,289 SF



515 V Street NE

Property Gallery

Interior - main floor



Floor area



515 V Street NE

Property Gallery

Machine shop



Welding area



515 V Street NE

Property Gallery

Upstairs office/conference room





Contact

**Rob Gray**

Vice President
+1 703 394 4843
R.Gray@colliers.com

**Clay Ellis**

Associate Vice President
+1 703 394 4833
Clay.Ellis@colliers.com

**Jason Sullivan, SIOR**

Senior Vice President
+1 410 319 2409
Jason.Sullivan@colliers.com

**Brian Watts**

Executive Vice President
+1 410 319 2408
Brian.Watts@colliers.com

This document has been prepared by Colliers International for advertising and general information only. Colliers International makes no guarantees, representations or warranties of any kind, expressed or implied, regarding the information including, but not limited to, warranties of content, accuracy and reliability. Any interested party should undertake their own inquiries as to the accuracy of the information. Colliers International excludes unequivocally all inferred or implied terms, conditions and warranties arising out of this document and excludes all liability for loss and damages arising there from. This publication is the copyrighted property of Colliers International and/or its licensor(s). ©2021. All rights reserved.



1753 Pinnacle Drive
12th Floor
Tysons Corner, VA 22102
P: +1 703 394 4800

6700 Alexander Bell Drive
Suite 200
Columbia, MD 21046
P: +1 410 319 2411

1625 Eye Street NW
Suite 950
Washington, DC 20006
P: +1 202 534 3000