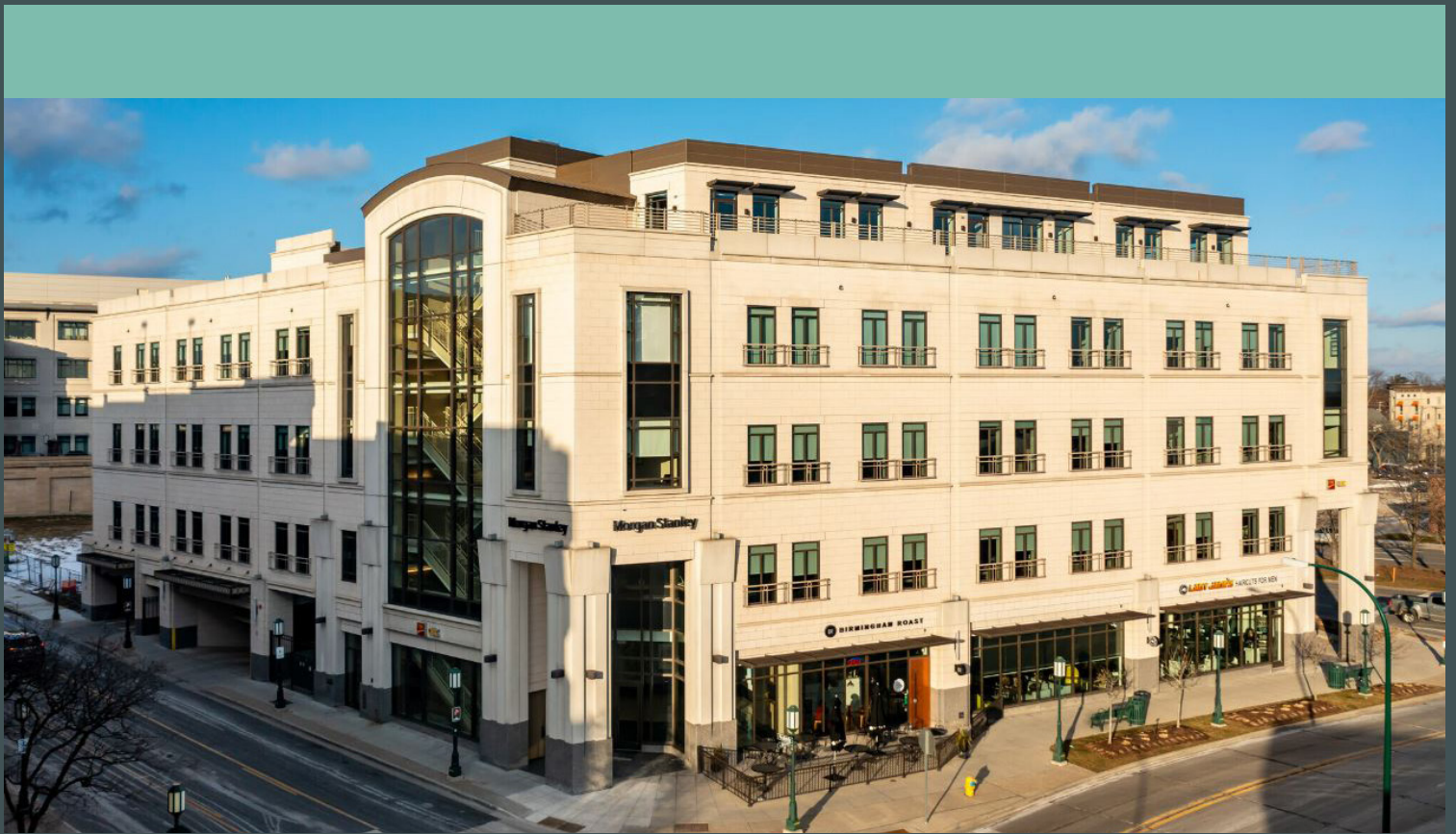


The Balmoral

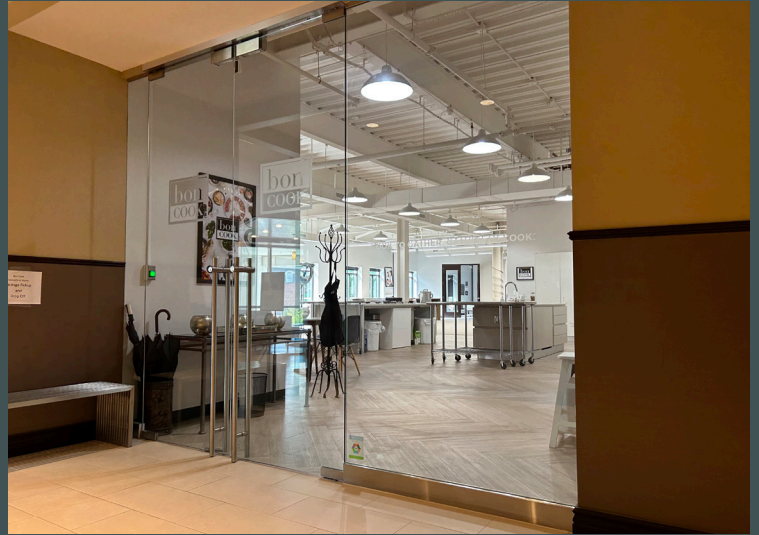
34901 Woodward Ave | Birmingham, MI



Property Features

- + Trophy-class office space in the heart of downtown Birmingham
- + 5,591 RSF on the 2nd floor available immediately
- + High end finishes throughout – full kitchen, open ceiling, 4 private offices, & corner suite
- + Adjacent to Peabody Street parking deck
- + 2 on-site executive garage spaces available
- + Birmingham Roast coffee on the first floor
- + Walkable to downtown Birmingham restaurant and hospitality amenities

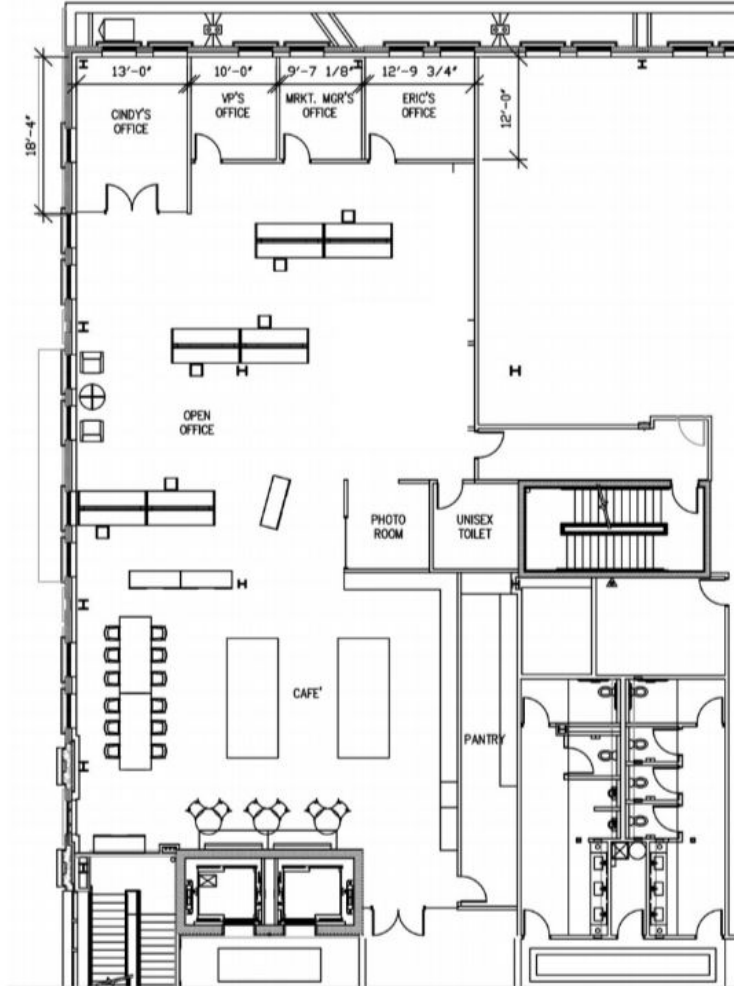
Photos



Photos



Floor Plan



Contact Us

Jasper Hanifi

Senior Associate
+1 248 351 2020
jasper.hanifi@cbre.com

© 2024 CBRE, Inc. All rights reserved. This information has been obtained from sources believed reliable, but has not been verified for accuracy or completeness. You should conduct a careful, independent investigation of the property and verify all information. Any reliance on this information is solely at your own risk. CBRE and the CBRE logo are service marks of CBRE, Inc. All other marks displayed on this document are the property of their respective owners, and the use of such logos does not imply any affiliation with or endorsement of CBRE. Photos herein are the property of their respective owners. Use of these images without the express written consent of the owner is prohibited.