

880 W. JEFFERSON AVENUE  
TRENTON, MI

INDUSTRIAL FOR SALE OR LEASE  
24,205 Square Feet Available

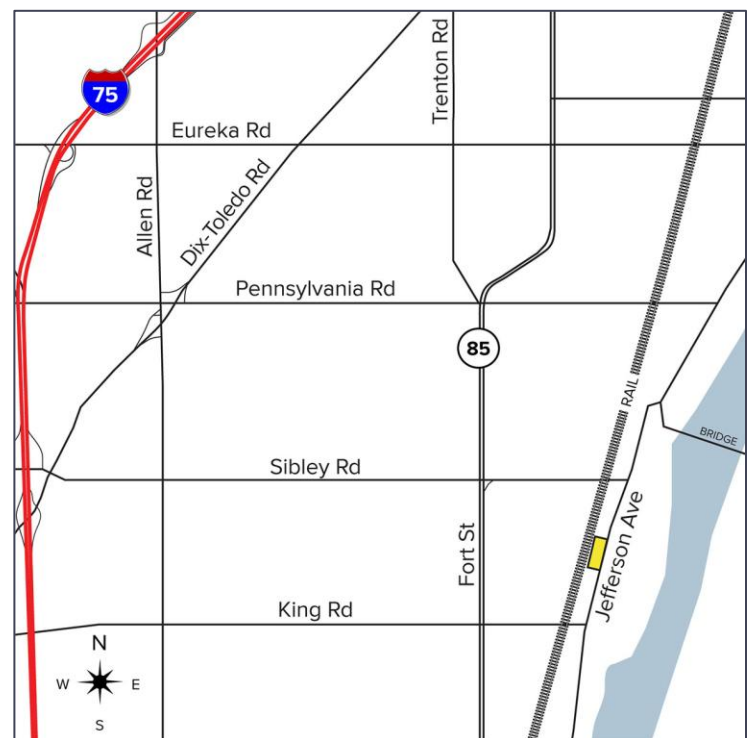


**SIGNATURE  
ASSOCIATES**  
KNOW SIGNATURE | KNOW RESULTS



## PROPERTY FEATURES

- 24,205 square feet available
- 4,205 sq. ft. of office space
- Zoned industrial/marijuana cultivation and processing approved
- Excellent manufacturing building with warehouse and 2,500 sq. ft. second floor office
- 10'-18' clear height
- (2) grade level doors, (1) interior truckwell
- Heavy power
- Built in 1980, updated in 2016
- 21 parking spaces
- Sale Price: \$1,600,000 (\$66.10/sq. ft.)
- Lease Rate: \$6.95/sq. ft. NNN



For more information, please contact:

**JUSTIN GAFFREY**  
(248) 799 3143  
jgaffrey@signatureassociates.com

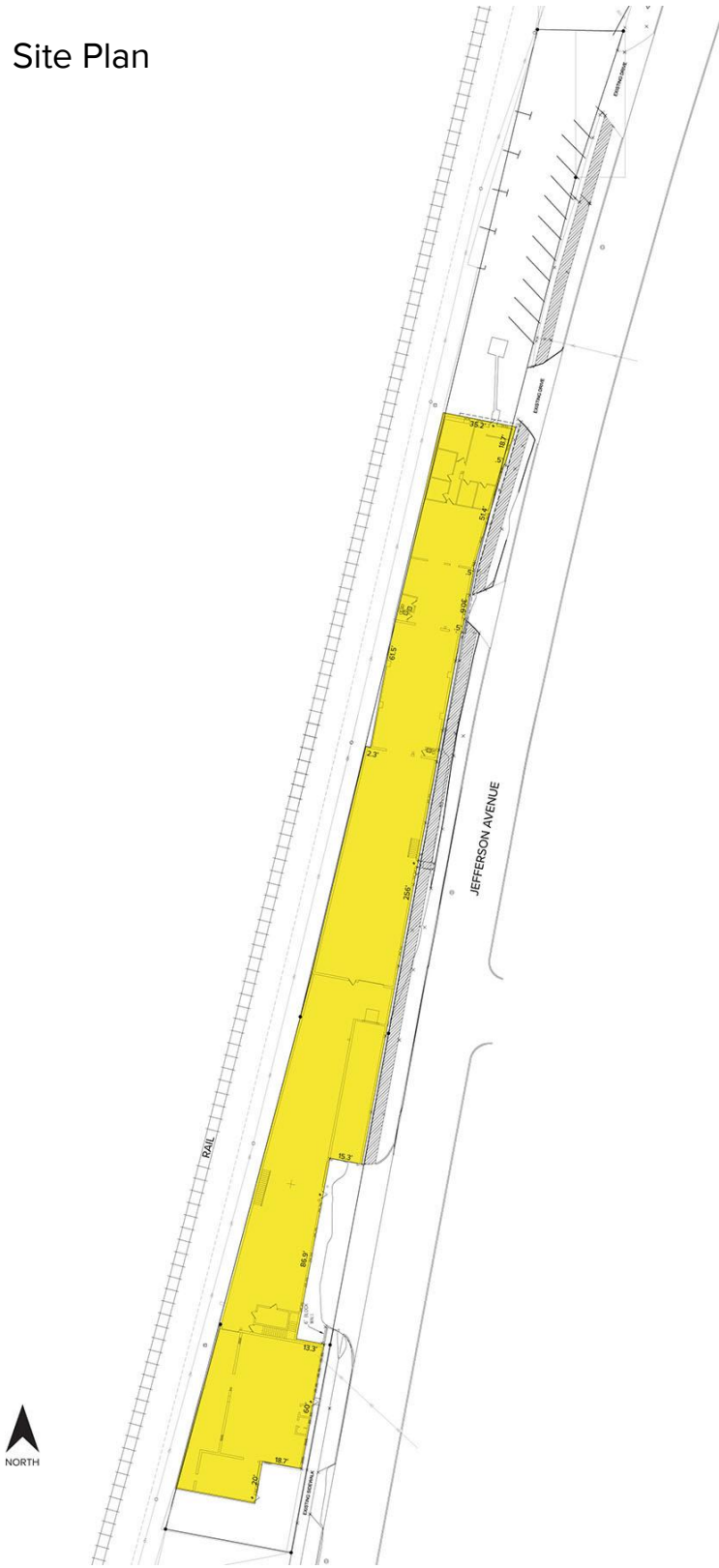
**SIGNATURE ASSOCIATES**  
One Towne Square, Suite 1200  
Southfield, MI 48076  
www.signatureassociates.com

# 800 W. Jefferson Avenue – Trenton, Michigan

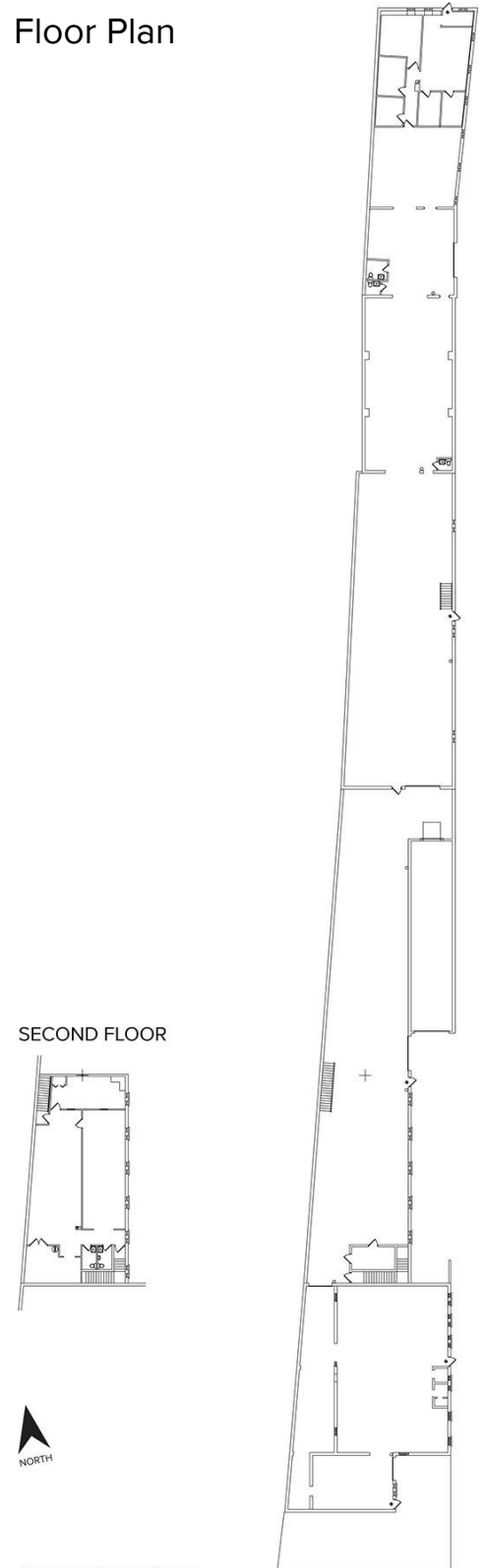
## Industrial For Sale or Lease

24,205  
Square Feet  
AVAILABLE

### Site Plan



### Floor Plan



For more information, please contact:

**JUSTIN GAFFREY**

(248) 799 3143

[jgaffrey@signatureassociates.com](mailto:jgaffrey@signatureassociates.com)

**SIGNATURE ASSOCIATES**

One Towne Square, Suite 1200

Southfield, MI 48076

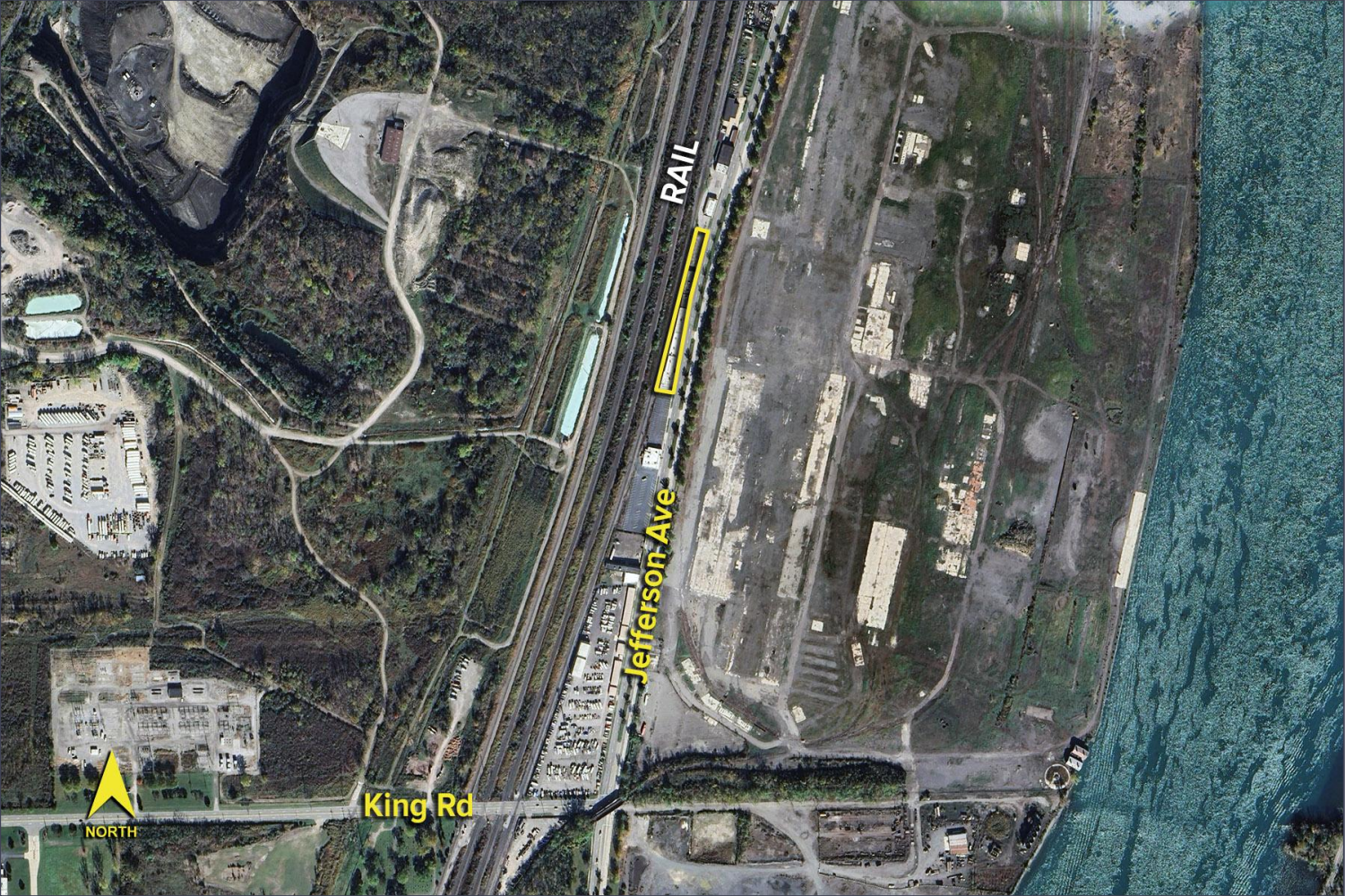
[www.signatureassociates.com](http://www.signatureassociates.com)

# 800 W. Jefferson Avenue – Trenton, Michigan

Industrial For Sale or Lease

24,205  
Square Feet  
AVAILABLE

Aerial



For more information, please contact:

**JUSTIN GAFFREY**  
(248) 799 3143  
jgaffrey@signatureassociates.com

**SIGNATURE ASSOCIATES**  
One Towne Square, Suite 1200  
Southfield, MI 48076  
www.signatureassociates.com

Information is subject to verification and no liability for errors or omissions is assumed. Price is subject to change and listing withdrawal.