

Record Owners:  
 AP # 201-630-005-000  
 Tim Wetherald  
 1856 Gold Street Unit "A"  
 Redding CA.  
 (818-292-0941

Agent:  
 Lehmann and Associates Consulting  
 Frank Lehmann P.L.S. 5680  
 358 Hartnell Ave, Ste "C"  
 Redding, CA. 96002  
 (530) 241-2596

Property Size : 2.04 acres

Property Status: "Vacant"

Utilities:  
 Electric: PG&E  
 Sewerage: City of Anderson  
 Water: City of Anderson

A.P. 201-630-004  
 Mobile Home Park

A.P. 201-630-005  
 42 L/S 77  
 2.04 acres

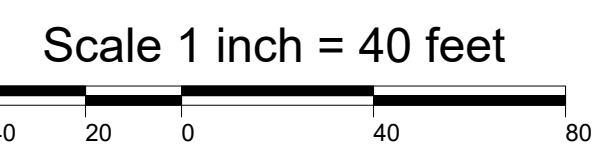
A.P. 201-630-006  
 F&W boat launching facility

A.P. 201-640-001  
 City of Anderson Park

A.P. 201-630-007  
 City of Anderson Park

LEGEND:

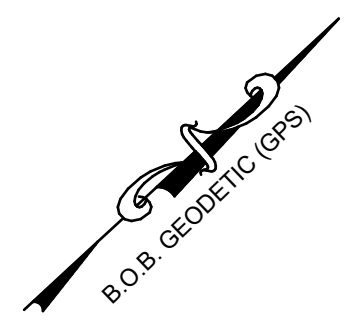
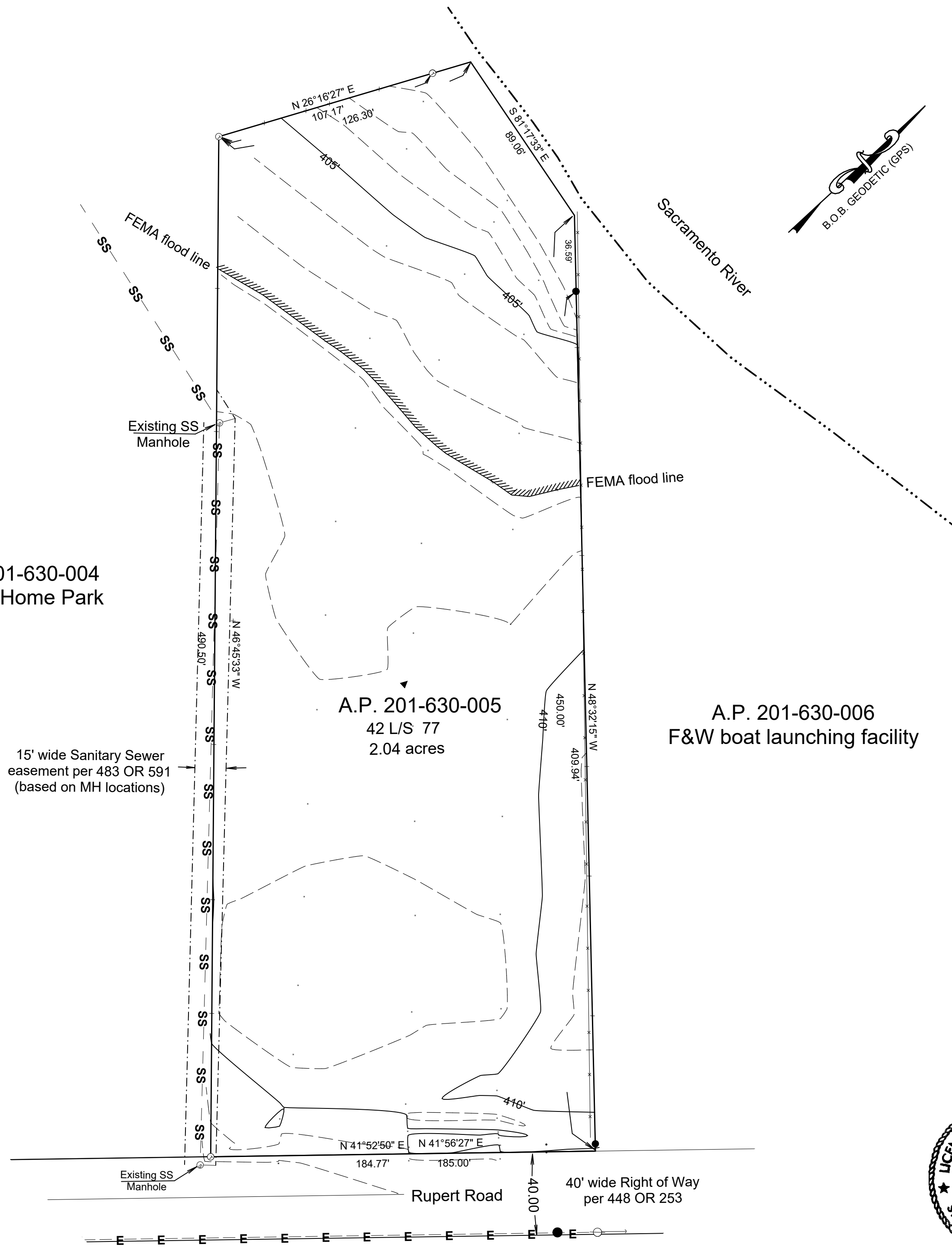
- Exterior property lines
- SS- Existing Sanitary Sewer line
- 5 ft Index contour line
- - - 1 ft contour line
- Existing fencelines
- - - Easement lines
- E - Powerlines



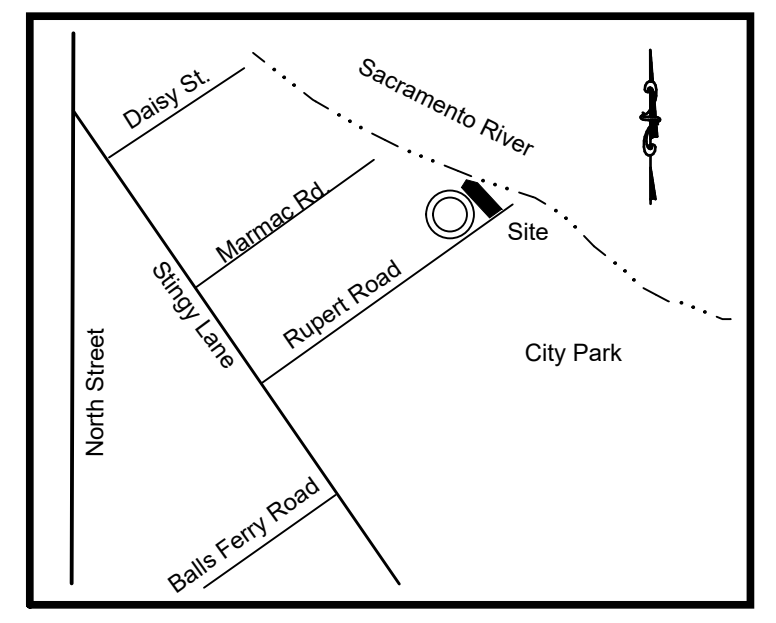
Contour lines are approximate, as they are based on a GPS tie to City of Anderson BM# 38 which has a published elevation of 411.263' (29 NGVD) This elevation was booted 2.90' to bring it to 414.16' (1988 NGVD)

FEMA BFE is based on the authoritative NFHL web services provided by FEMA and was exported on 7-7-2021.

15' wide Sanitary Sewer easement per 483 OR 591 (based on MH locations)



Aerial Photo



Vicinity map



**SITE MAP**  
 for  
 Tim Wetherald  
 in a portion of  
 Sec 46 of  
 P.B. Breeding Grant  
 in the City Anderson  
 County of Shasta  
 STATE OF CALIFORNIA  
 Month August - 2021



358 Hartnell Ave, - Suite "C"  
 Redding, California 96002  
 (530) 241-2596  
 lehmannconsulting@sbcglobal.net