

HALLOCK WAREHOUSE

1275 ATLANTIC AVENUE S, HALLOCK, MN 56728



FOR SALE OR LEASE



WAREHOUSE WITH OVERHEAD DOORS, YARD, RAIL SPUR

Building Size: 5,000 SF

Sale Price: \$300,000

Lease Rate: \$3.50 PSF NNN

Paul Campbell | 701.893.2826

paul.campbell@goldmark.com

Goldmark Commercial Real Estate

www.goldmarkcommercial.com

HALLOCK WAREHOUSE

1275 ATLANTIC AVENUE S, HALLOCK, MN 56728



BUILDING SIZE

5,000 SF

SALE PRICE

\$300,000

LEASE RATE

\$3.50 PSF NNN

LOT SIZE

2.38 Acres

PARCEL NUMBER

320011600

YEAR BUILT

1980

PROPERTY DESCRIPTION:

Great warehouse property for sale or lease in Hallock! This industrial property is in a great location and features a large yard, rail spur, multiple overhead doors and 16' high ceilings.

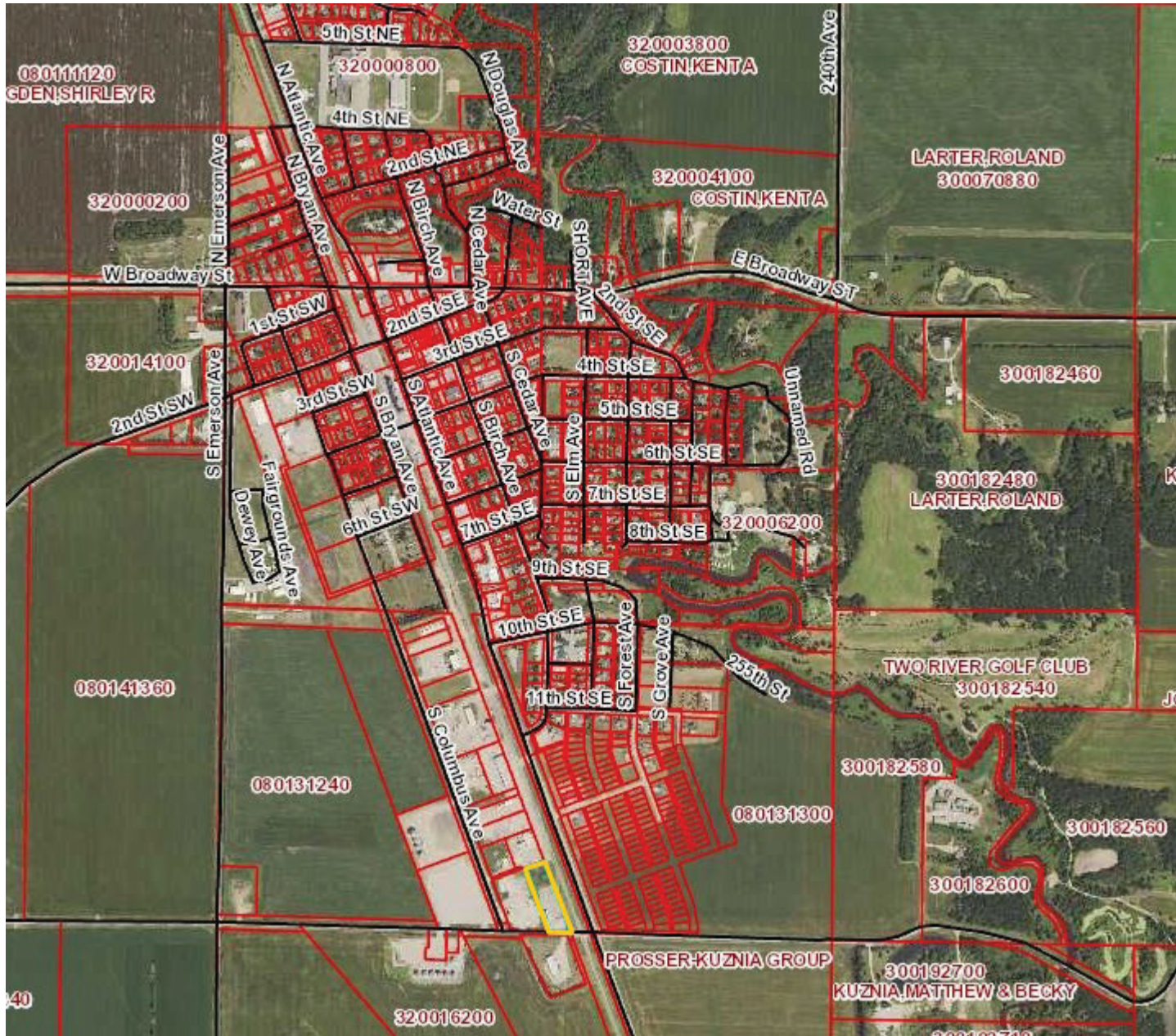
This information has been secured from sources we believe to be reliable, but we make no representation or warranties, expressed or implied, as to the accuracy of the information. Interested parties should conduct their own independent investigations and rely only on those results.



HALLOCK WAREHOUSE

1275 ATLANTIC AVENUE S, HALLOCK, MN 56728

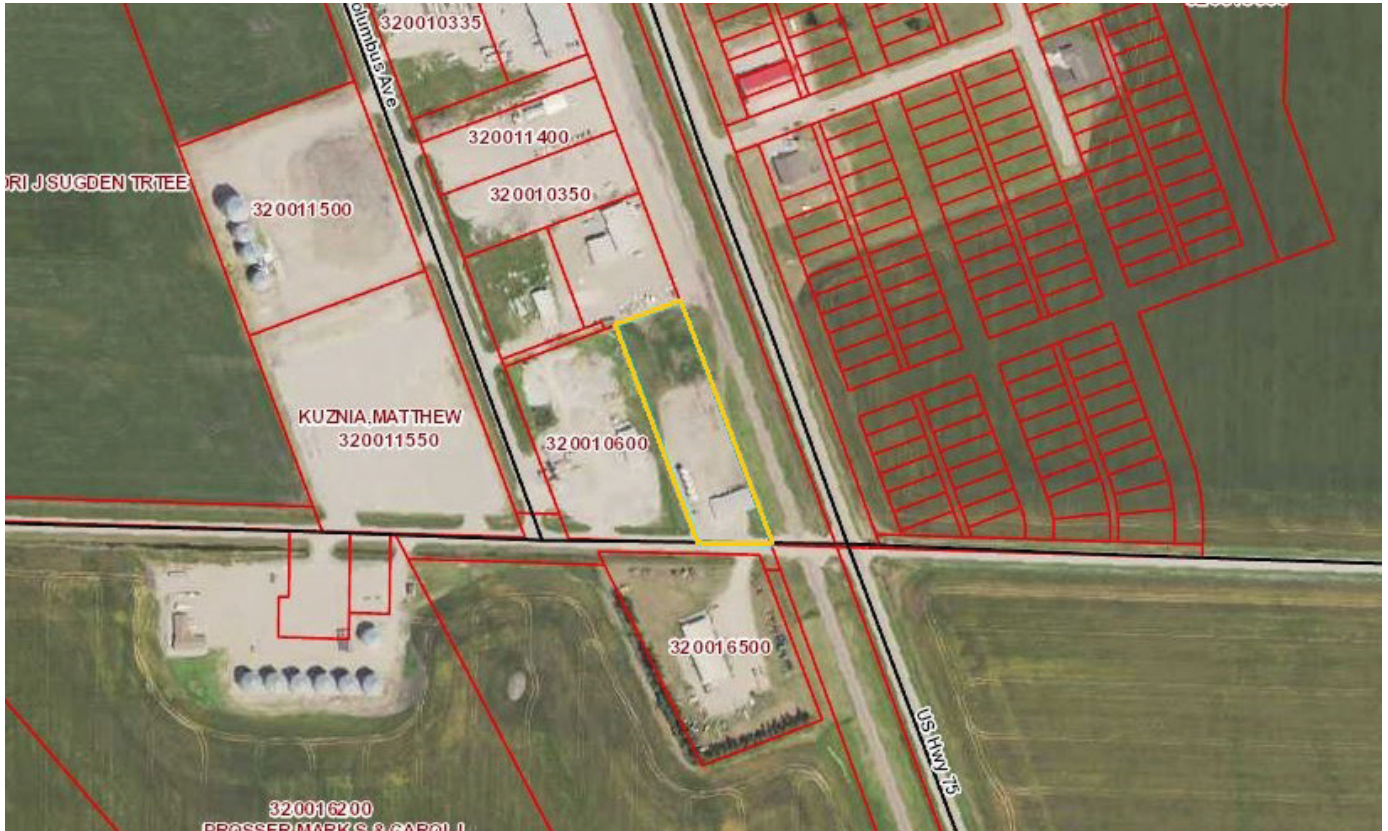
PARCEL VIEW



HALLOCK WAREHOUSE

1275 ATLANTIC AVENUE S, HALLOCK, MN 56728

PARCEL VIEW



HALLOCK WAREHOUSE

1275 ATLANTIC AVENUE S, HALLOCK, MN 56728


GOLDMARK™
COMMERCIAL REAL ESTATE INC



HALLOCK WAREHOUSE

1275 ATLANTIC AVENUE S, HALLOCK, MN 56728



REGIONAL MAP

