

APOLLO RETAIL CENTER
SPOUT SPINGS ROAD AND FRIENDSHIP RD
BRASELTON GA
A PUBLIX OUTPARCE RETAIL CENTER

- High visibility Retail location in a Publix retail center
- Build to suite from 1,500 to 6,000 square feet
- New construction with estimated completion within 10 months
- This is Zoned commercial for Professional, Retail, Medical, or Restaurant.
- Apollo Retail Center is Surrounded by an Affluent Population with an Average Household Income of \$125,000 Within Three Miles
- Located Between Two Major Interstate Corridors of Interstate-85 and Interstate-985 and just One Mile from the Entry to Reunion Country Club, a Master-Planned Community with an 18 Hole Golf Course, 2.5 Miles from Northeast Georgia Medical Center and Three Miles from Flowery Branch High School.
- Many National tenants professional, retail and restaurants
- Combined Traffic Count: 14,710 VPD
- This retail space is offered exclusively by Joanne Liu, (702) 686-8396

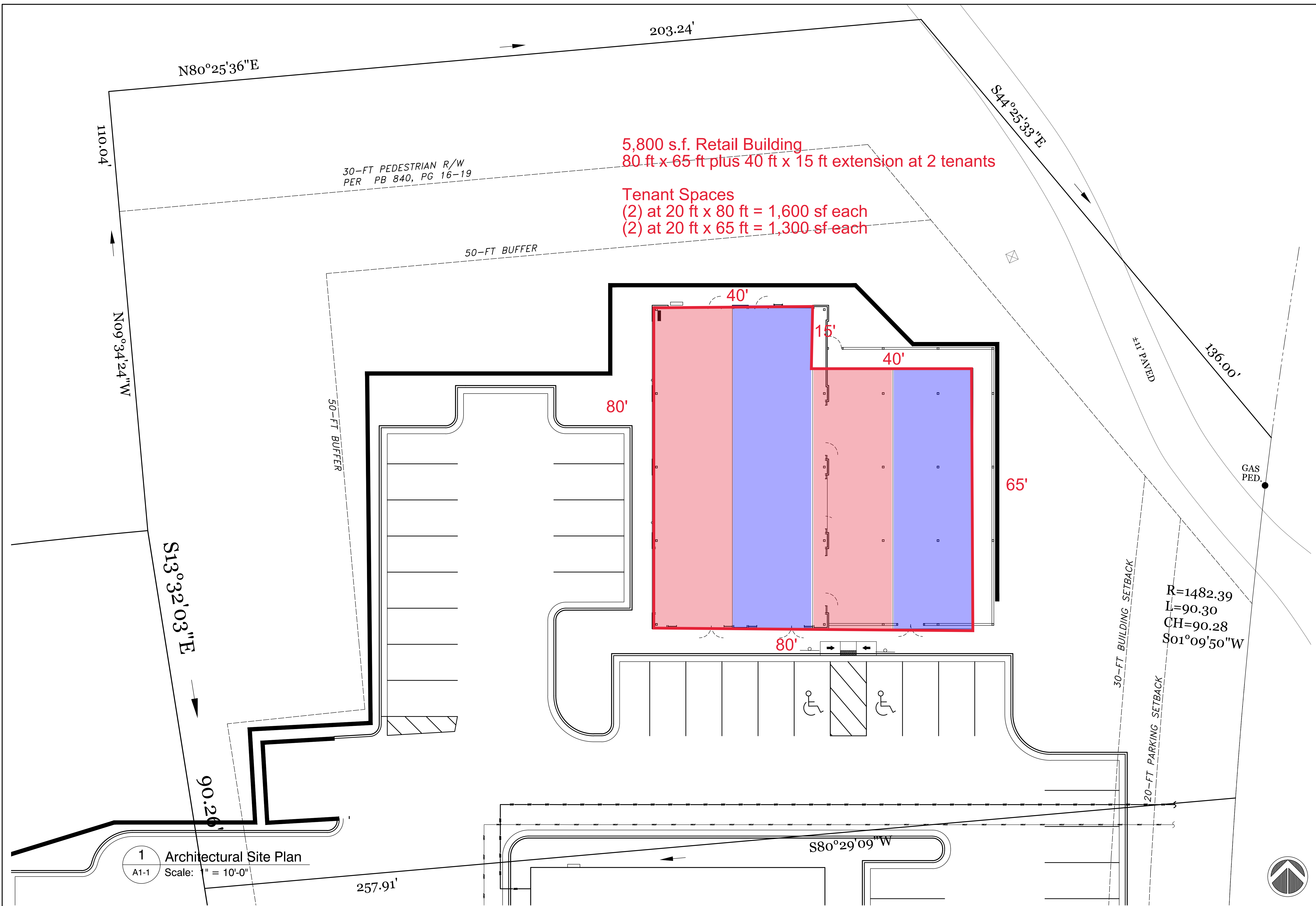


Apollo Plaza Concept

6,200 s.f. Retail Building

7350 Friendship Springs Blvd.

Braselton, Georgia October 29, 2019



5,800 s.f. Retail Building
 80 ft x 65 ft plus 40 ft x 15 ft extension at 2 tenants

Tenant Spaces
 (2) at 20 ft x 80 ft = 1,600 sf each
 (2) at 20 ft x 65 ft = 1,300 sf each

1 Architectural Site Plan
 A1-1 Scale: " = 10'-0"

APOLLO PLAZA - BUILDING SHELL
 7304 SPOUT SPRINGS RD., FLOWERY BRANCH, GEORGIA 30542
 PREPARED FOR:
READ LLC

MASS ENGINEERING AND CONSULTANTS, LLC.
 3459 ACWORTH DUE WEST RD., SUITE 605
 ACWORTH, GEORGIA 30101
 PHONE: 404.850.7790
 WWW.MASS-ENG.COM
 Copyright © 2020



REVISIONS

DATE	DESCRIPTION
7/30/20	Add Site Plan

ARCHITECTURAL SITE PLAN

PROJECT NUMBER: 19-0123

DATE: April 17, 2020

