

6.2± Acres of Land | Contractor's Yard Zoned R-R FOR SALE



11709 -11811 DAISY LN Glenn Dale, MD 20769

PROPERTY HIGHLIGHTS

- 6.2 ± Acres of Land
- Zoned RR (Rural Residential)
- Approved for continuing non-conforming use
- 6 Lots
- 11709 Daisy Lane - Parcel A - a 1,730 SF residence on approximately 15,424 SF of land.
- 11721 Daisy Lane - Parcel 159 - a 1,814 SF residence on 30,384 SF of land.
- 00000 Daisy Lane - Parcel 418 - a narrow vacant lot containing approximately 3,178 SF.
- 11891 Daisy Lane - Parcel 160 - a 1716 SF residence on approximately 16,709 SF of land.
- 11727 Daisy Lane - Parcel 5 - 4.02 acres of land improved by approximately 10,100 square feet of structures consisting of a 4,000 sf pole building, a 1,600 SF pole building, a 750 SF storage building, a 1,500 sf heavy equipment garage/shop, a 1,450 SF business office, a 800 SF pickup truck garage, and also eight material cribs that are approximately 20 feet wide by 25 feet deep. **Has approved continuing non-conforming use for office, storage, and excavation uses.**
- 11811 Daisy Lane - Parcel 12 - a 26,379 SF graded and level vacant residential lot.
- Property can be sold in parts or all together
- **SALE PRICE: \$5,950,000.00 (real estate only - no equipment)**



EDWARD LUCKETT
O: 301.318.3100
eluckett@naimichael.com

TERRY ROGERS
O: 301.526.2584
trogers@naimichael.com

PROPERTY DESCRIPTION

6.2 ± Acres (6 Lots) of Land zoned R-R (Rural Residential) that includes a Contractor's Yard. 4.02 ± Acres is zoned R-R with a continuing non-conforming use designated for excavation, storage and office, plus 2.18 ± Acres of property zoned R-R with Three (3) residences and a vacant lot.

INVESTMENT HIGHLIGHTS

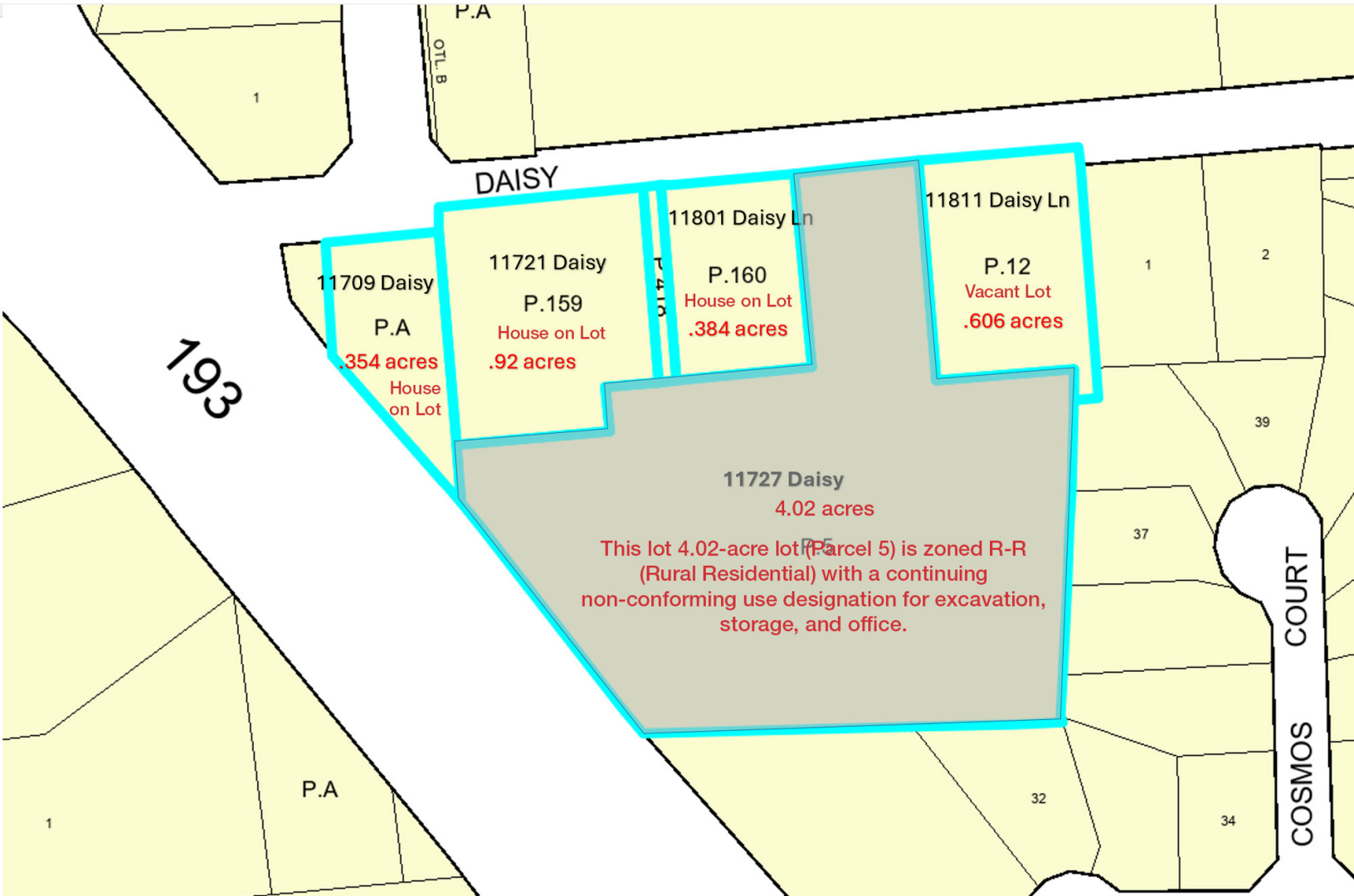
- Located at Glenn Dale Boulevard & Daisy Lane with level topography.
- Zoned RR with non-confirming use approvals for office/storage
- Three (3) homes on large residential lots plus One (1) vacant large residential lot
- 4.02-acre contractor's yard with 10,100 SF of structures
- Strong surrounding demographics and highway access

EXECUTIVE SUMMARY

Located at the corner of Glenn Dale Boulevard and Daisy Lane, this 6.2± acre contractor's yard presents a rare opportunity to acquire a multi-parcel site with flexible utility and long-standing operational approvals. The property includes six distinct parcels, a large vacant residential lot and three that are fronting on Daisy Lane improved with residential structures. They buffer the industrial operations behind them from the residential neighborhood. The 4.02-acres industrial site behind the residential lots is improved by approximately 10,100 SF of structures, including pole buildings, garages, a business office, and eight material cribs—making it ideal for excavation, storage, or contractor operations.

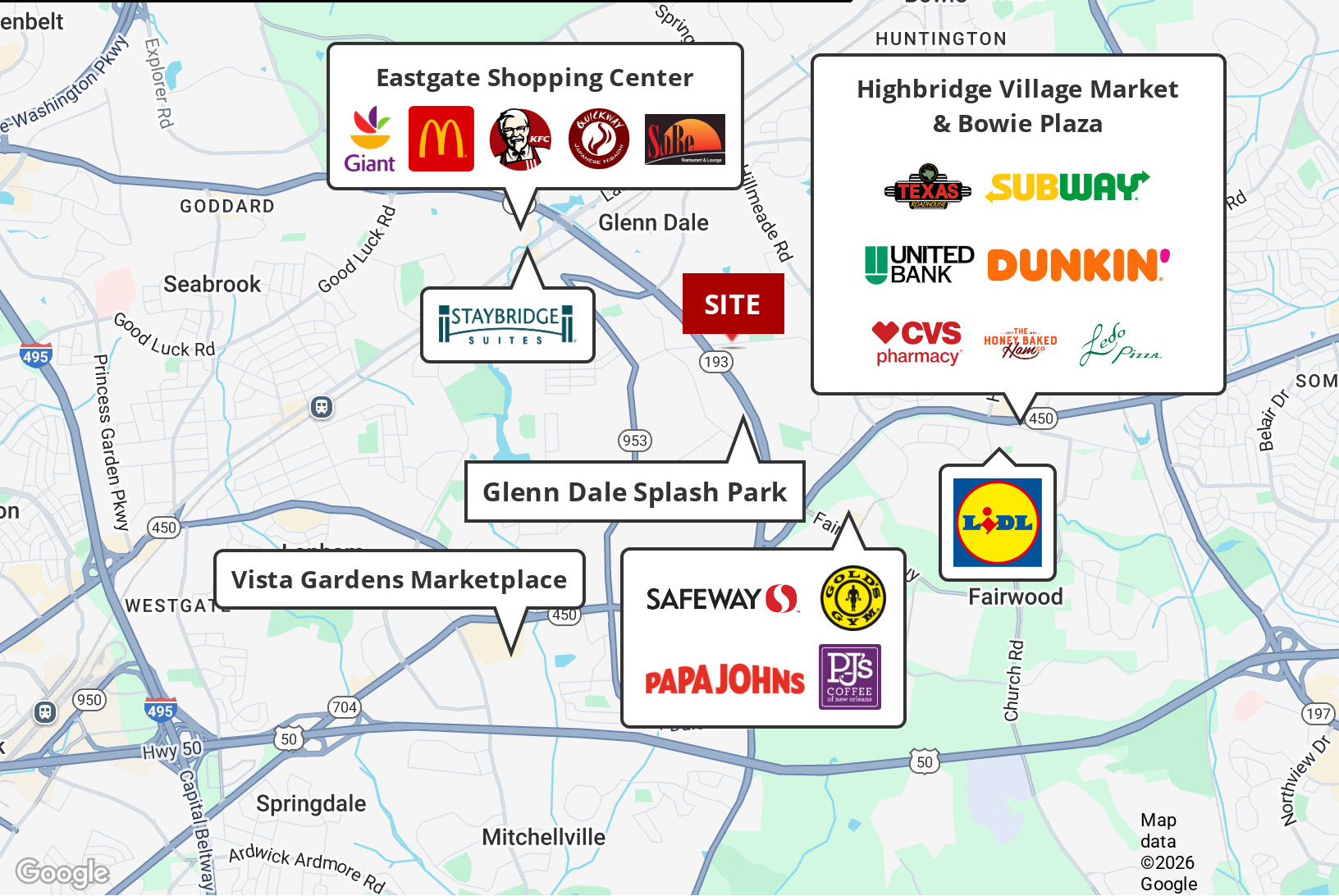
The site is level, well-maintained. It is, and zoned RR (Rural Residential), with an approved continuing non-conforming use for office, storage, and excavation. This zoning flexibility enhances the investment appeal for owner-users or developers seeking a well-located site with easy access to all points of the metropolitan area from close-in Prince George's County. The property can be sold in parts or as a whole, offering strategic optionality for buyers.

Surrounded by a mix of residential neighborhoods and commercial hubs, the location benefits from proximity to major thoroughfares including Route 193 and US 50, and the Capitol Beltway, providing access to markets serving Washinton DC, Baltimore, Northern Virginia and the Eastern Shore. Demographics within a 5-mile radius show a population of over 174,000.



Parcel Map Showing Labeled Lots Breakdown with Explanation of Non-Confirming Use

Land Zoned R-R For Sale
 11709 - 11811 DAISY LN, GLENN DALE, MD 20769



DEMOGRAPHICS



POPULATION



HOUSEHOLDS



AVG. HOUSEHOLD INCOME

1 Mile	6,560	2,035	\$205,376
3 Miles	62,482	19,617	\$179,672
5 Miles	174,242	58,790	\$158,233

Demographics data derived from AlphaMap

LOCATION DESCRIPTION

Located at the corner of Glenn Dale Boulevard and Daisy Lane in Glenn Dale, the site is level and all of the improvements on the site are well maintained, consists of 6.03 acres of land, all zoned R-R (Rural Residential – 1/2 acre sites). **Most of the property (approximately 4.02 acres) has been used as an operations center by an excavation company and has continuing non-conforming approvals for office, storage and excavation uses.**

Land Zoned R-R For Sale

11709 - 11811 DAISY LN, GLENN DALE, MD 20769



11811 Daisy Lane



Entrance from Daisy Lane

Naimichael

The information contained herein has been given to us by the owner of the property or other sources we deem reliable. We have no reason to doubt its accuracy, but we do not guarantee it. Floor plans, site plans and other graphic representations of this property have been reduced and reproduced, and are not necessarily to scale. All information should be verified prior to purchase or lease.

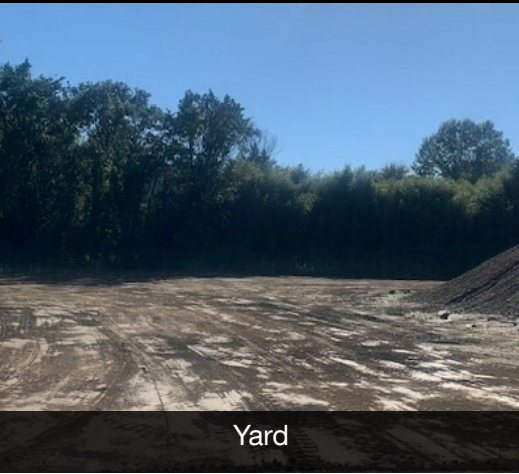
EDWARD LUCKETT

301.318.3100 | eluckett@naimichael.com

TERRY ROGERS

301.526.2584 | trogers@naimichael.com

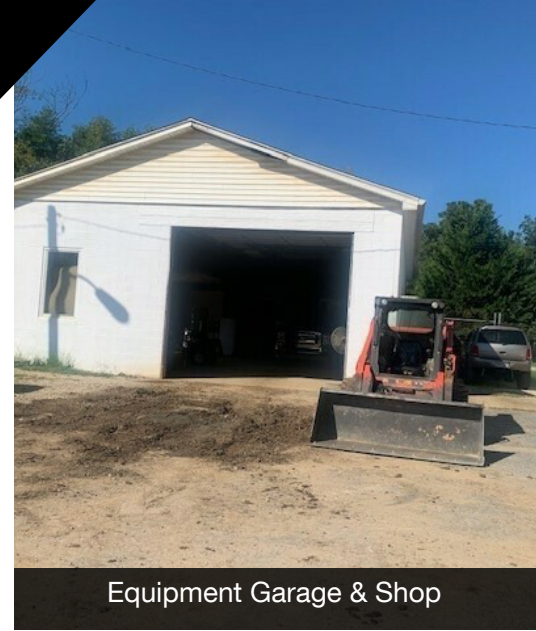
Land Zoned R-R For Sale
11709 - 11811 DAISY LN, GLENN DALE, MD 20769



Yard



Pick-Up Truck Storage



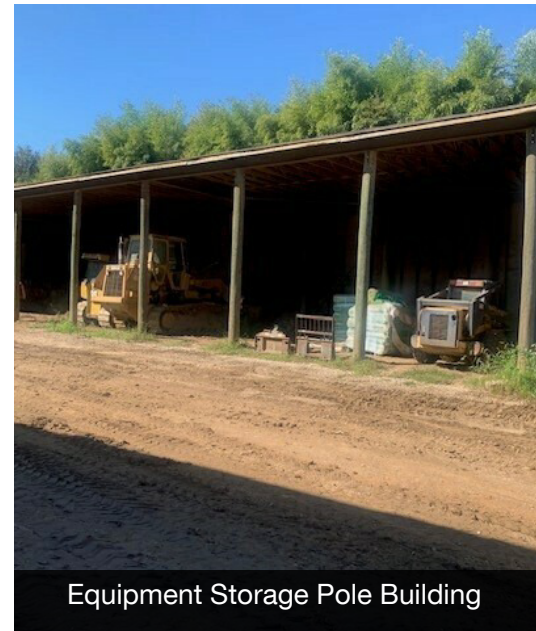
Equipment Garage & Shop



Storage Building



4,000 SF Pole Building



Equipment Storage Pole Building



Interior of 4,00 SF Pole Building



Lay Down Yard



Yard with Working Equipment