

1,506 SF Restaurant



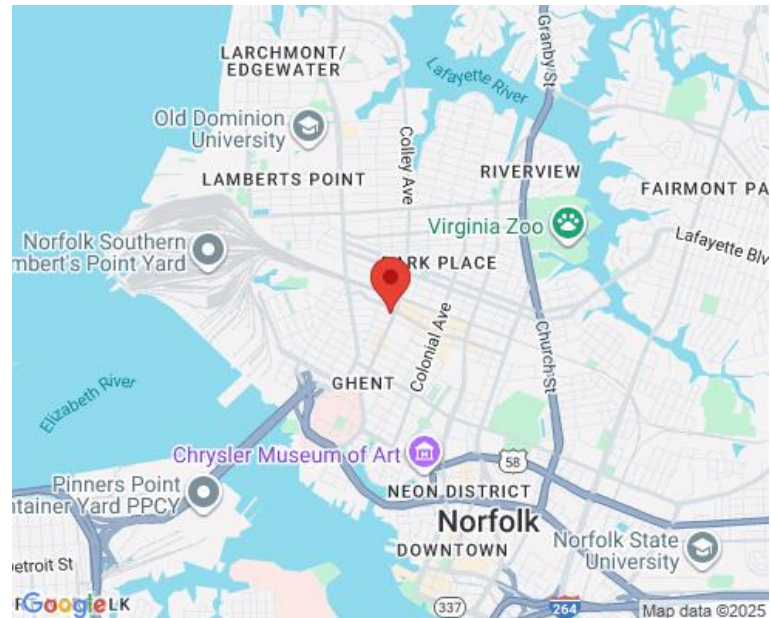
PROPERTY OVERVIEW

Located in the heart of Ghent on Colley Avenue close to W. 21st Street. Great opportunity to be located next to Papa John's and Subway.

- New awnings and renovations to the building were completed in early 2025
- Excellent visibility and walkability location

AVAILABLE: ±1,506 SF RESTAURANT SPACE - 10' hood, triple sink, two restrooms and outdoor patio

AREA MAP



DEMOGRAPHICS

Radius:	1 mile	3 mile	5 mile
Population:	22,499	98,248	241,231
Average HH Income:	\$86,403	\$85,256	\$76,681
Traffic Count:	±14,803		

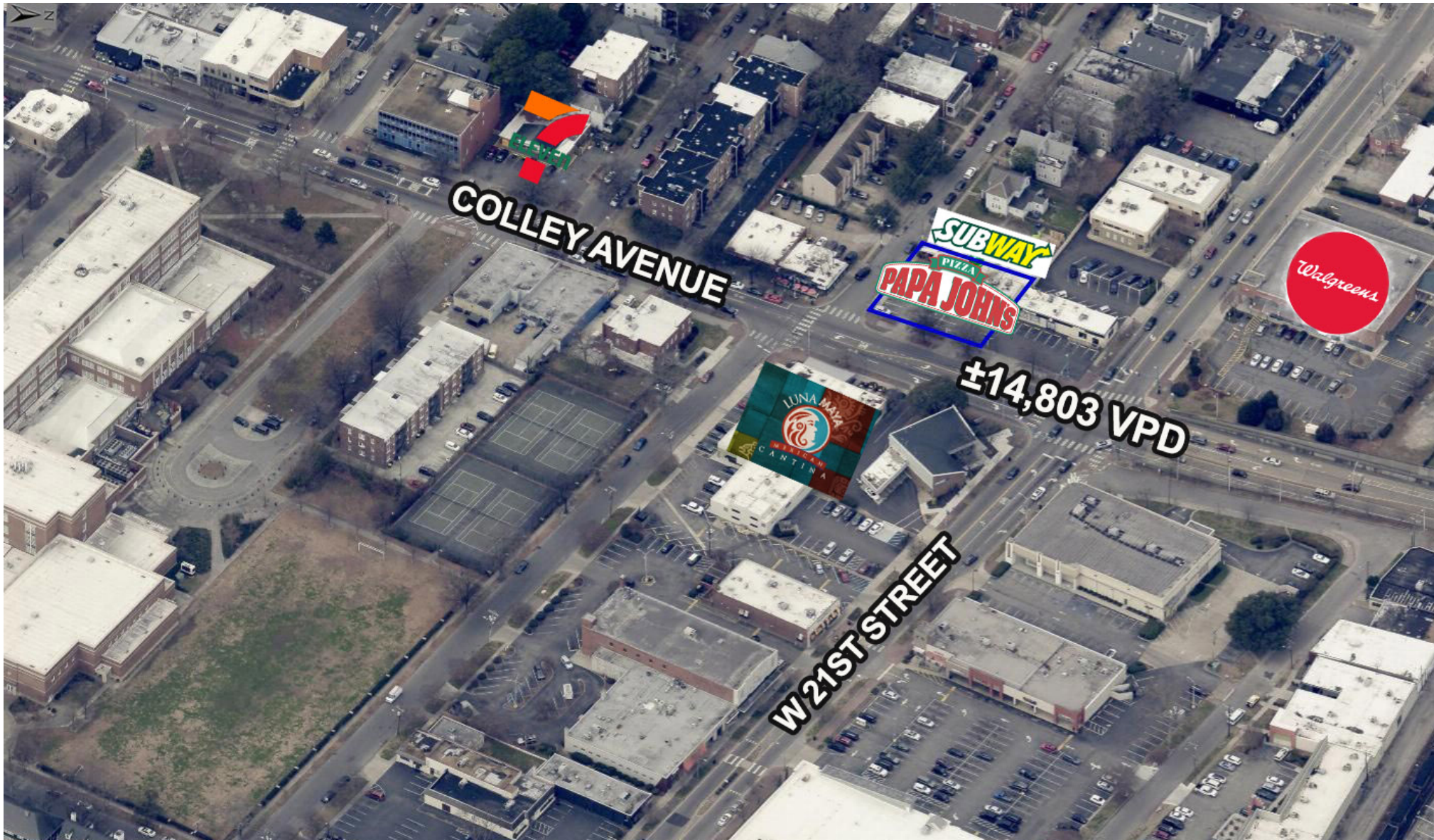
FOR MORE INFORMATION, PLEASE CONTACT:

LENNY BURNS
(757) 490-3141
lburns@pembrokerealty.com

Pembroke Realty Group
4433 Corporation Lane, Suite 250
Virginia Beach, VA 23462
www.pembrokerealty.com

2001 Colley Avenue

± 1,506 SF AVAILABLE



FOR MORE INFORMATION, PLEASE CONTACT:

LENNY BURNS

(757) 490-3141

lburns@pembrokerealty.com

Pembroke Realty Group

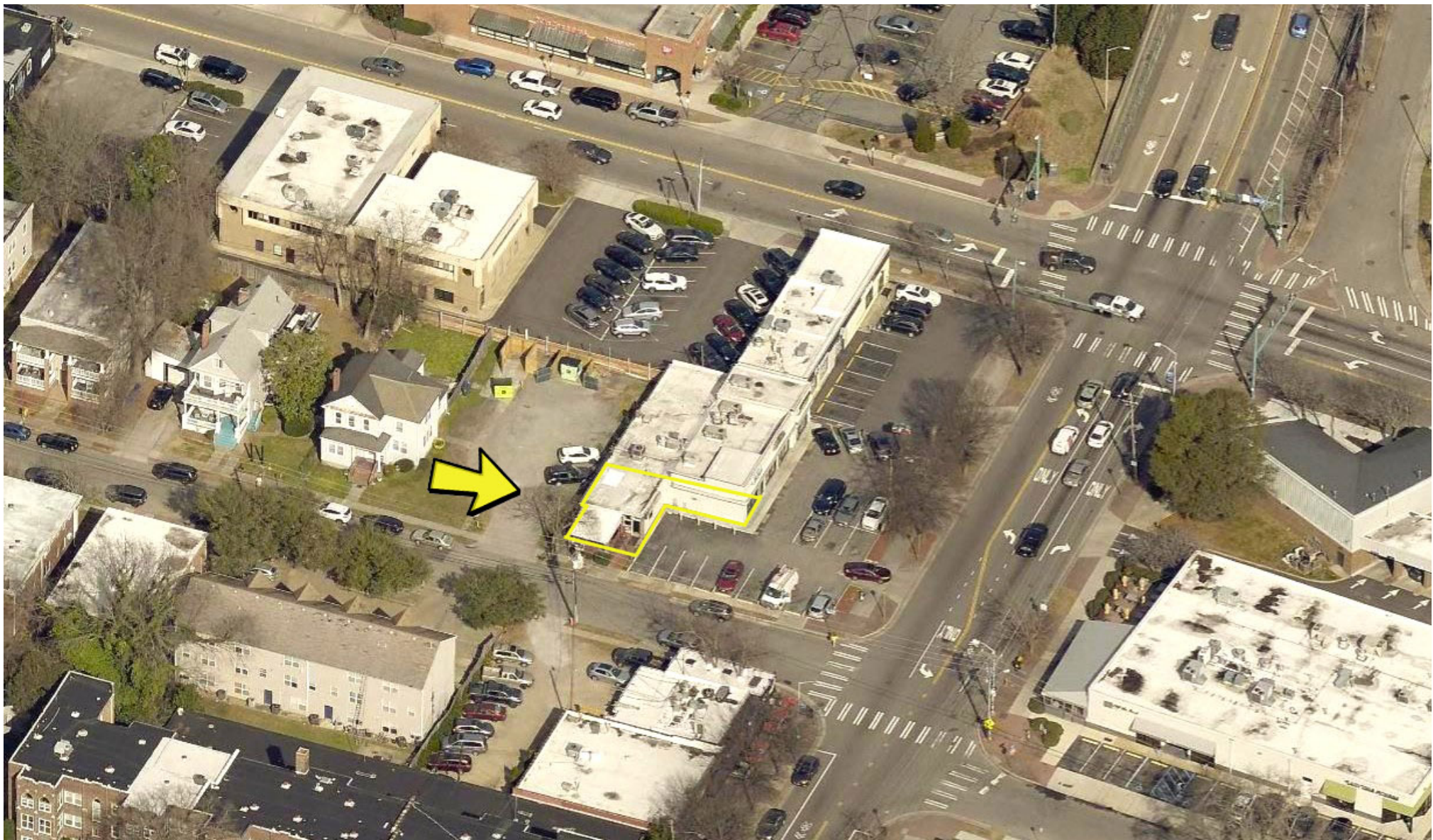
4433 Corporation Lane, Suite 250

Virginia Beach, VA 23462

www.pembrokerealty.com

2001 Colley Avenue

± 1,506 SF AVAILABLE



FOR MORE INFORMATION, PLEASE CONTACT:

LENNY BURNS

(757) 490-3141

lburns@pembrokerealty.com

Pembroke Realty Group

4433 Corporation Lane, Suite 250

Virginia Beach, VA 23462

www.pembrokerealty.com