

# FRY'S FOOD - SWC BASELINE RD & GILBERT RD | GILBERT, AZ



**ACRES:**

±0.70

**SQUARE FEET:**

±30,279

**ZONING:**

SC

**ADDRESS:**

1845 E BASELINE ROAD, GILBERT AZ 85233

**SUMMARY:**

This Fry's anchored neighborhood center is located in the city of Gilbert, AZ. The surrounding trade area boasts a population of nearly 400,000 residents and almost 400,000 workers with an average annual household income above \$80,000. Over 98,000 vehicles per day pass through the intersection of Baseline Rd and Gilbert Rd.



2415 E Camelback Rd, Suite 900  
Phoenix, Arizona, 85016  
[www.BarclayGroup.com](http://www.BarclayGroup.com)

**Brett Sheets**

Senior Vice President Leasing  
602.224.4147 Direct  
480.596.9399 Office  
[bsheets@barclaygroup.com](mailto:bsheets@barclaygroup.com)

# OVERVIEW - SWC BASELINE RD & GILBERT RD | GILBERT, AZ

## TRAFFIC COUNTS

**Baseline Road:** ± 47,684 VPD

**Gilbert Road:** ± 50,703 VPD

**Total Traffic:** ± 98,387 VPD

## DEMOGRAPHICS

### Average Household Income

1 Mile	3 Miles	5 Miles
\$83,489	\$83,876	\$83,546

### Total Population

1 Mile	3 Miles	5 Miles
16,146	154,471	417,090

### Daytime Population

1 Mile	3 Miles	5 Miles
15,907	147,074	393,023

### Total Households

1 Mile	3 Miles	5 Miles
5,853	81,931	151,323

## AVAILABLE

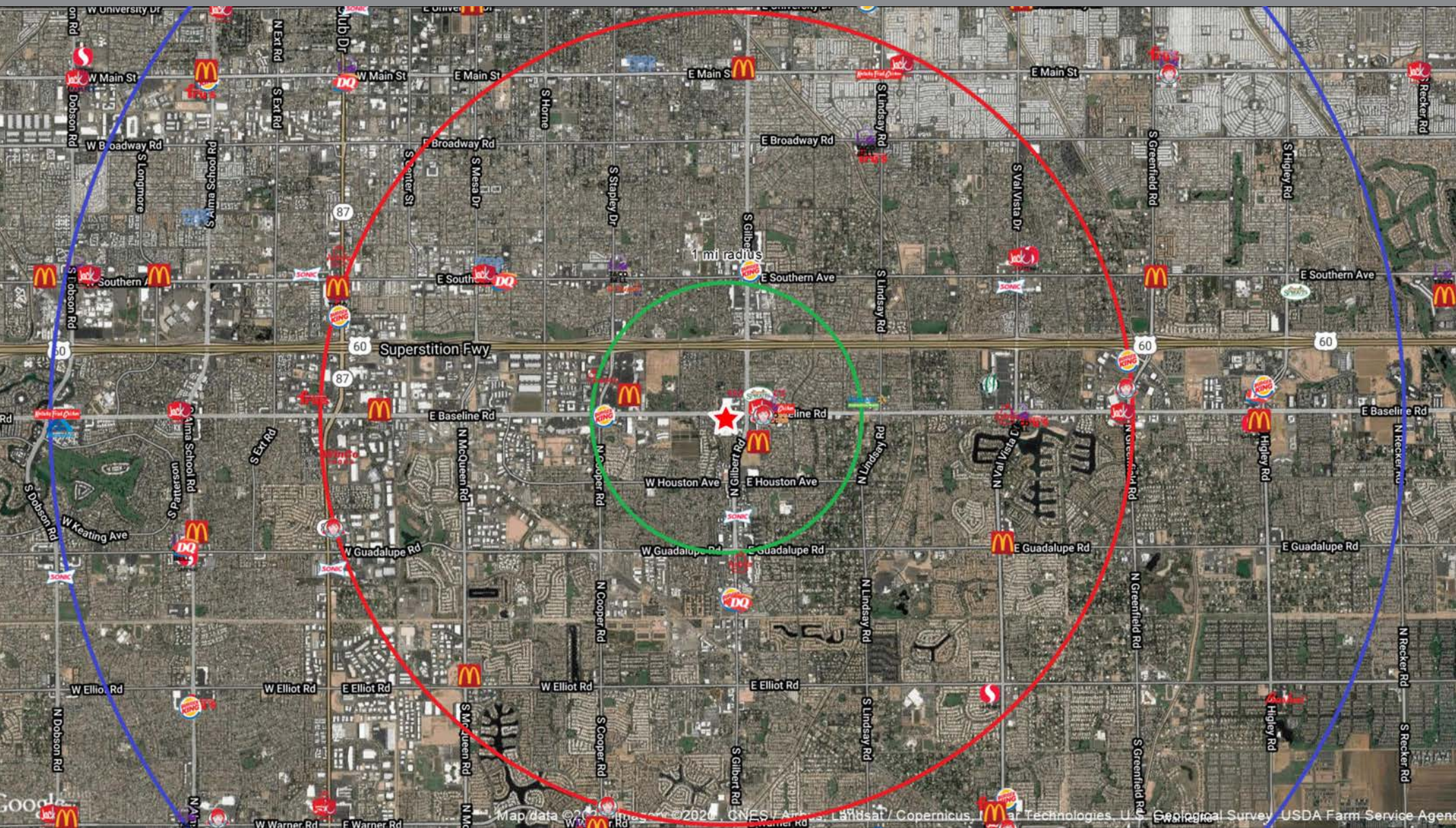
- PAD ± 30,279 SF, 0.70 AC



2390 E Camelback Rd, Suite 200  
Phoenix, Arizona, 85016  
www.BarclayGroup.com

**Brett Sheets**  
Senior Vice President Leasing  
602.224.4147 Direct  
480.596.9399 Office  
bsheets@barclaygroup.com

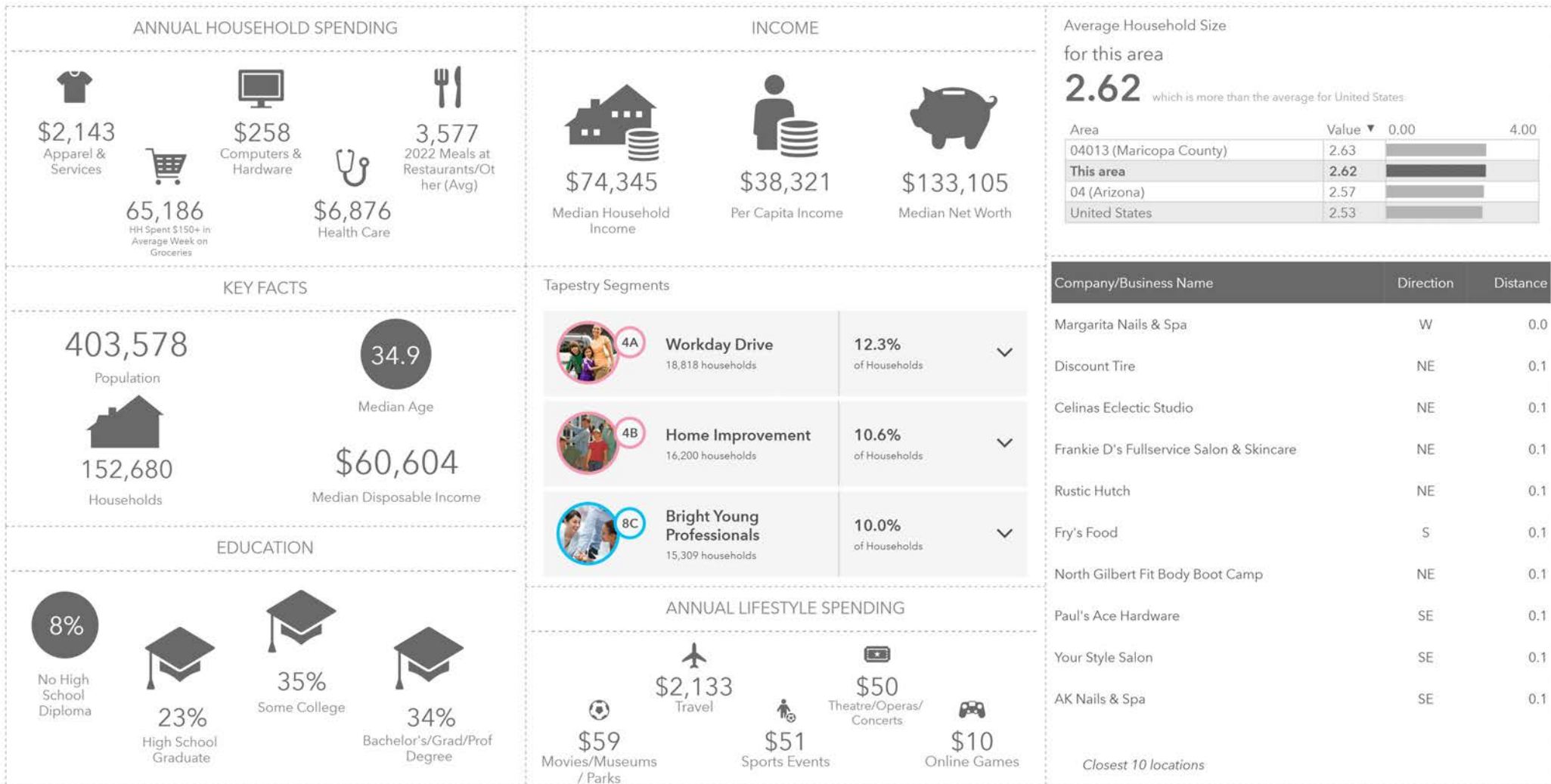
# FRY'S FOOD - SWC BASELINE RD & GILBERT RD | GILBERT, AZ



2390 E Camelback Rd, Suite 200  
Phoenix, Arizona, 85016  
[www.BarclayGroup.com](http://www.BarclayGroup.com)

**Brett Sheets**  
Senior Vice President Leasing  
602.224.4147 Direct  
480.596.9399 Office  
[bsheets@barclaygroup.com](mailto:bsheets@barclaygroup.com)

# DEMOGRAPHICS (3 MILES) - SWC BASELINE RD & GILBERT RD | GILBERT, AZ



2390 E Camelback Rd, Suite 200  
 Phoenix, Arizona, 85016  
[www.BarclayGroup.com](http://www.BarclayGroup.com)

**Brett Sheets**  
 Senior Vice President Leasing  
 602.224.4147 Direct  
 480.596.9399 Office  
[bsheets@barclaygroup.com](mailto:bsheets@barclaygroup.com)