



RETAIL FOR LEASE
9001 BAILEYWICK ROAD
Raleigh, NC 27615

Jake Plotkin, CCIM
jplotkin@lee-associates.com
O: 919.576.2505
C: 919.616.0066



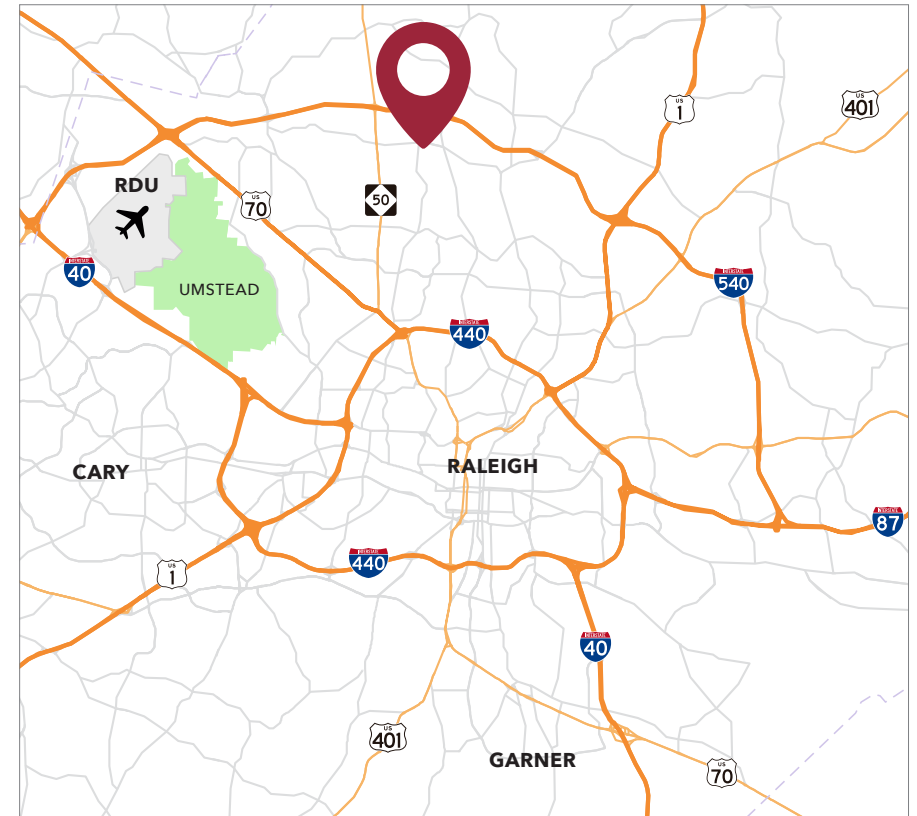
All information furnished regarding property for sale, rental or financing is from sources deemed reliable, but no warranty or representation is made to the accuracy thereof and same is submitted to errors, omissions, change of price, rental or other conditions prior to sale, lease or financing or withdrawal without notice. No liability of any kind is to be imposed on the broker herein.

RETAIL FOR LEASE 9001 BAILEYWICK ROAD

Raleigh, NC 27615

PROPERTY HIGHLIGHTS

- » 7,554 SF retail space on 1 acre
- » Zoned CX-5
- » Built in 1995
- » Excellent high traffic location with over 49,000 vpd
- » Average HH Income (1 mile): \$155,001
- » Located in a strong retail corridor near Lowe's Foods Anchored Harvest Plaza Shopping Center and Six Forks Station
- » Lease rate: call broker



TRAFFIC COUNTS

- » Strickland Road: 17,815
- » Six Forks Road: 32,083

Jake Plotkin, CCIM
jplotkin@lee-associates.com
O: 919.576.2505
C: 919.616.0066

All information furnished regarding property for sale, rental or financing is from sources deemed reliable, but no warranty or representation is made to the accuracy thereof and same is submitted to errors, omissions, change of price, rental or other conditions prior to sale, lease or financing or withdrawal without notice. No liability of any kind is to be imposed on the broker herein.

RETAIL FOR LEASE
9001 BAILEYWICK ROAD
Raleigh, NC 27615



Jake Plotkin, CCIM
jplotkin@lee-associates.com
O: 919.576.2505
C: 919.616.0066

All information furnished regarding property for sale, rental or financing is from sources deemed reliable, but no warranty or representation is made to the accuracy thereof and same is submitted to errors, omissions, change of price, rental or other conditions prior to sale, lease or financing or withdrawal without notice. No liability of any kind is to be imposed on the broker herein.

RETAIL FOR LEASE
9001 BAILEYWICK ROAD
Raleigh, NC 27615

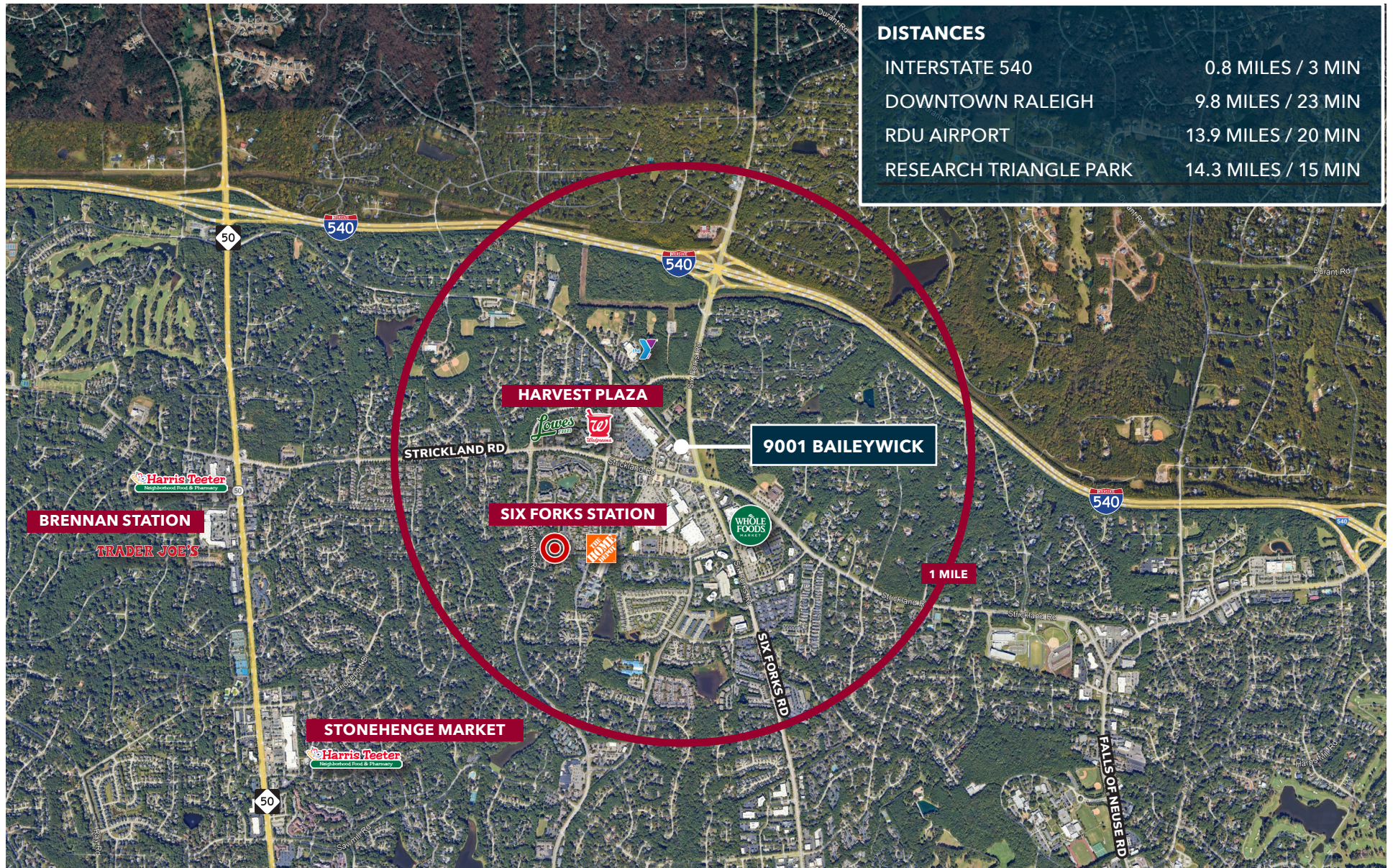


Jake Plotkin, CCIM
jplotkin@lee-associates.com
O: 919.576.2505
C: 919.616.0066

All information furnished regarding property for sale, rental or financing is from sources deemed reliable, but no warranty or representation is made to the accuracy thereof and same is submitted to errors, omissions, change of price, rental or other conditions prior to sale, lease or financing or withdrawal without notice. No liability of any kind is to be imposed on the broker herein.

RETAIL FOR LEASE 9100 BAILEYWICK ROAD

Raleigh, NC 27615

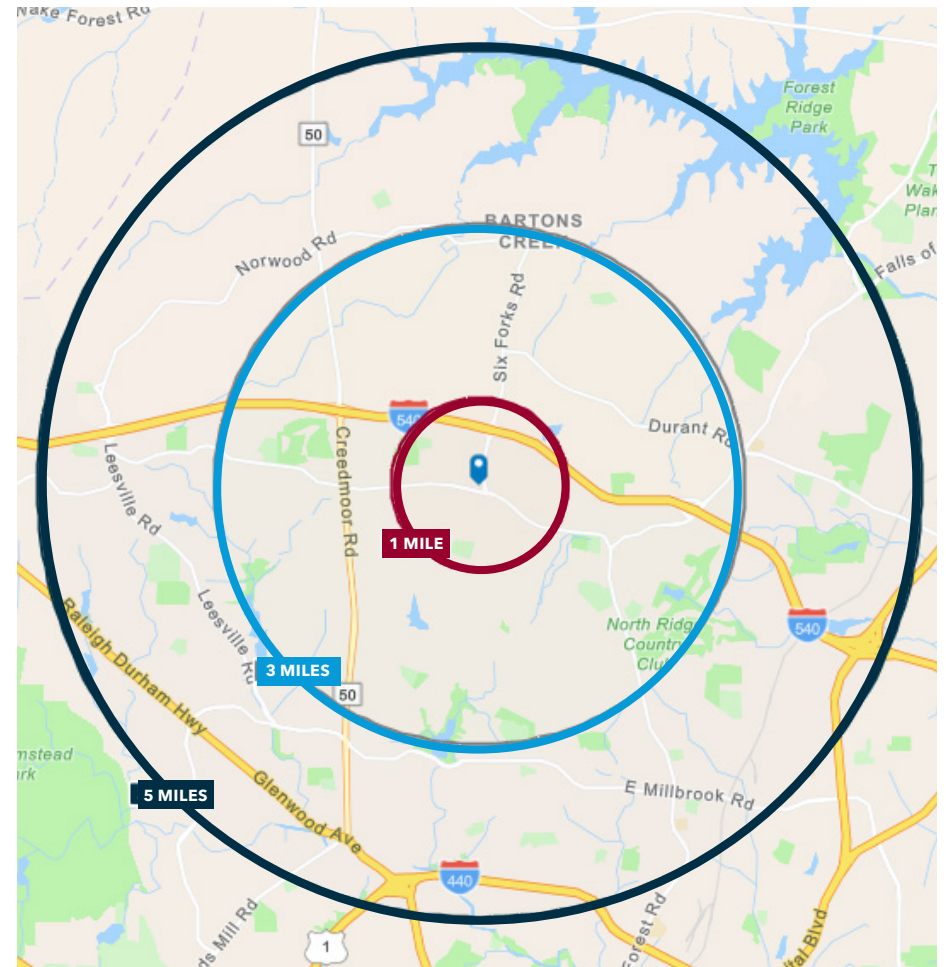


RETAIL FOR LEASE

9100 BAILEYWICK ROAD

Raleigh, NC 27615

	1 MILE	3 MILES	5 MILES
Population (2024)	7,123	59,128	165,771
Daytime Population	13,874	65,906	189,805
Median Age	48.2	42.2	40.1
Average Household Income	\$155,001	\$145,190	\$148,076
Average Home Value	\$667,683	\$608,326	\$609,475
Bachelor's Degree or Higher	65.5%	65.4%	66.3%



**#1 Best County to Live in NC
(Wake County)**
Stacker, 2024

**#2 Hottest Real Estate
Market (Raleigh)**
US News & World Report, 2024

**#3 Best Place to Live in the
U.S. in 2023-2024
(Raleigh-Durham)**
US News & World Report, 2024