

# 2270 ASHLEY CROSSING DR

## SUITE 130 OFFICE SPACE FOR SUBLEASE

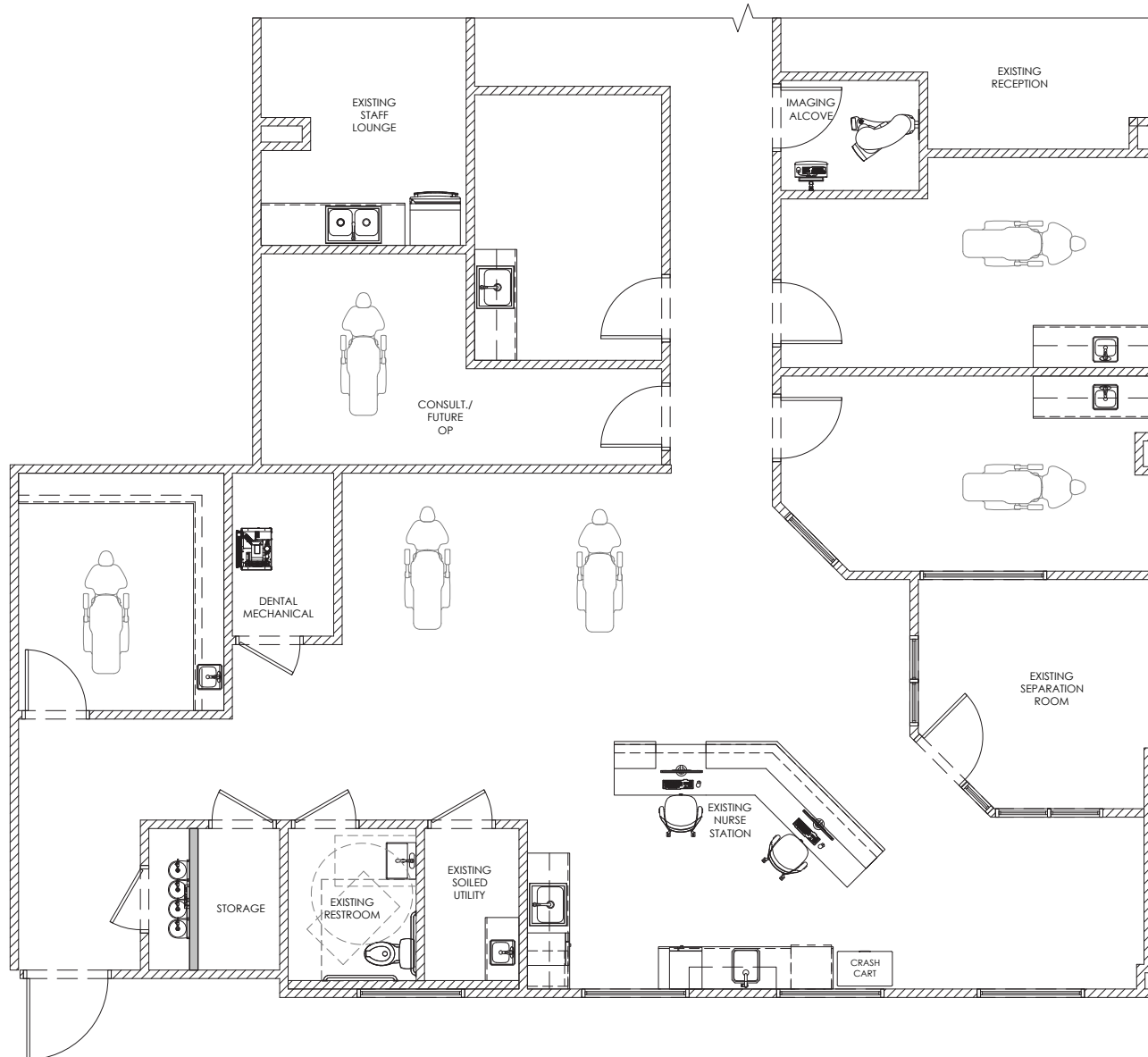


MATT JOHNSON | +1 985 237 2580 | [MATT.JOHNSON@BRIDGE-COMMERCIAL.COM](mailto:MATT.JOHNSON@BRIDGE-COMMERCIAL.COM)

MICHAEL KELLY | +1 843 568 2970 | [MICHAEL.KELLY@BRIDGE-COMMERCIAL.COM](mailto:MICHAEL.KELLY@BRIDGE-COMMERCIAL.COM)

# FLOOR PLAN

## SUITE 130 FLOOR PLAN



# PROPERTY OVERVIEW

**ADDRESS** 2270 ASHLEY CROSSING DRIVE | SUITE 130  
CHARLESTON, SC

**PREMISES** SUITE 130  
3,746 SF

**RENTAL RATE:** \$32.00 RSF FULL SERVICE

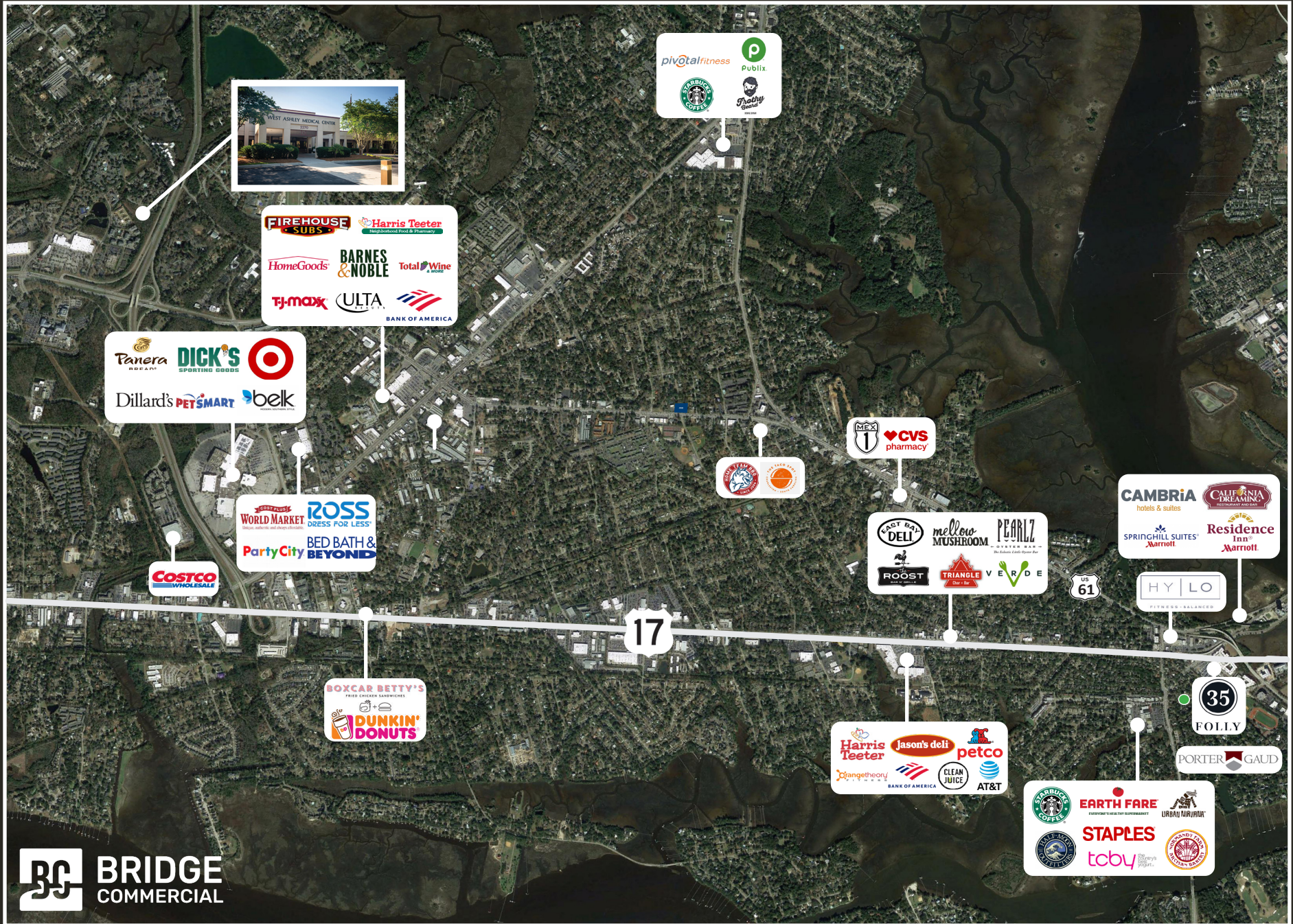
## COMMENTS

AVAILABLE FOR SUBLEASE, SUITE 130 AT WEST ASHLEY MEDICAL CENTER, A 3,746 SF FIRST-FLOOR SPACE, IS AVAILABLE IMMEDIATELY ACROSS FROM ROPER ST. FRANCIS HOSPITAL. WITH AMPLE PARKING AND A PRIME LOCATION AT A MAIN ENTRANCE, THIS SUITE OFFERS EXCELLENT VISIBILITY. A TENANT IMPROVEMENT ALLOWANCE IS AVAILABLE FOR QUALIFIED TENANTS, MAKING IT AN IDEAL CHOICE FOR HEALTHCARE PROVIDERS LOOKING TO CUSTOMIZE THEIR SPACE.



SCAN FOR MORE INFORMATION

# NEARBY AMENITIES



pivotalFitness  
Starbucks  
Publix  
Frothy

FIREHOUSE SUBS  
Harris Teeter  
HomeGoods  
BARNES & NOBLE  
Total Wine  
TJ-maxx  
ULTA  
BANK OF AMERICA

Panera  
DICK'S Sporting Goods  
Dillard's  
PETSMART  
belk

WORLD MARKET  
ROSS  
Party City  
BED BATH & BEYOND

COSTCO WHOLESALE

CVS pharmacy

CVS pharmacy

DELL  
mellow MUSHROOM  
PEARLZ  
ROOST  
TRIANGLE VERDE

CAMBRIA hotels & suites  
CALIFORNIA DREAMING  
SPRINGHILL SUITES Marriott  
Residence Inn Marriott

HYLO FITNESS BALANCED

BOXCAR BETTY'S  
DUNKIN' DONUTS


Harris Teeter  
jason's deli  
petco  
orange theory  
BANK OF AMERICA  
CLEAN JUICE  
AT&T

35 FOLLY

PORTER GAUD

STARBUCKS COFFEE  
EARTH FARE  
STAPLES  
tcbuy





WEST ASHLEY MEDICAL CENTER

2270

**MEDICAL OFFICE FOR LEASE**

**2270 ASHLEY CROSSING DR, SUITE 130**



MATT JOHNSON | +1 985 237 2580 | [MATT.JOHNON@BRIDGE-COMMERCIAL.COM](mailto:MATT.JOHNON@BRIDGE-COMMERCIAL.COM)

MICHAEL KELLY | +1 843 568 2970 | [MICHAEL.KELLY@BRIDGE-COMMERCIAL.COM](mailto:MICHAEL.KELLY@BRIDGE-COMMERCIAL.COM)