



For Lease | \pm 10,000 SF

Office/Warehouse Space with Docks

Bakersfield Airport Business Center
3700 Pegasus Drive, Bakersfield, CA

Cameron Mahoney

Senior Vice President | Principal
License No. 01937802
+1 661 631 3814
cameron.mahoney@colliers.com

David A. Williams, SIOR

Senior Vice President | Principal
License No. 00855489
+1 661 631 3816
david.a.williams@colliers.com

Jason Alexander

Senior Vice President | Principal
License No. 01360995
+1 661 631 3818
jason.alexander@colliers.com

Colliers International

Central California
10000 Stockdale Hwy, Suite 102
Bakersfield, CA 93311
colliers.com/bakersfield



Property Information

3700 Pegasus Dr. is an approximately 93,000 SF multi-story office warehouse building situated on approximately 10 Acres of land. Under new ownership after formerly being owned by The Bakersfield Californian. The property is located in North Bakersfield within the Bakersfield Airport Business Park on the SEC of Pegasus Dr. and Unicorn Rd, which provides convenient access to Meadows Field Airport, Freeway 65, and Highway 99.

- +/- 10,000 SF of office/warehouse space available for Lease.
- Approx. 600 SF of office space.
- Climate-controlled
- Semi-truck accessible with docks and roll-up doors.
- Location offers immediate access to Highway 99, Highway 65, and Seventh Standard Road/Merle Haggard Dr., providing easy access to all parts of the City of Bakersfield and Kern County.
- Limited like-kind product available on the market.
- Zoning: M2_PD per the County of Kern
- Year Built: 1982
- Site Area: 1982
- Power: 225 Amp, 480 Volt, 3 Phase, 4wire
- Clear Height: 19' - 20'
- Neighbors include Schlumberger, Quinn Caterpillar, The State of California, Pacific Gas & Electric, U.S. Post Office, and Amazon.

Availability

Suite 500

+/- 10,000 SF

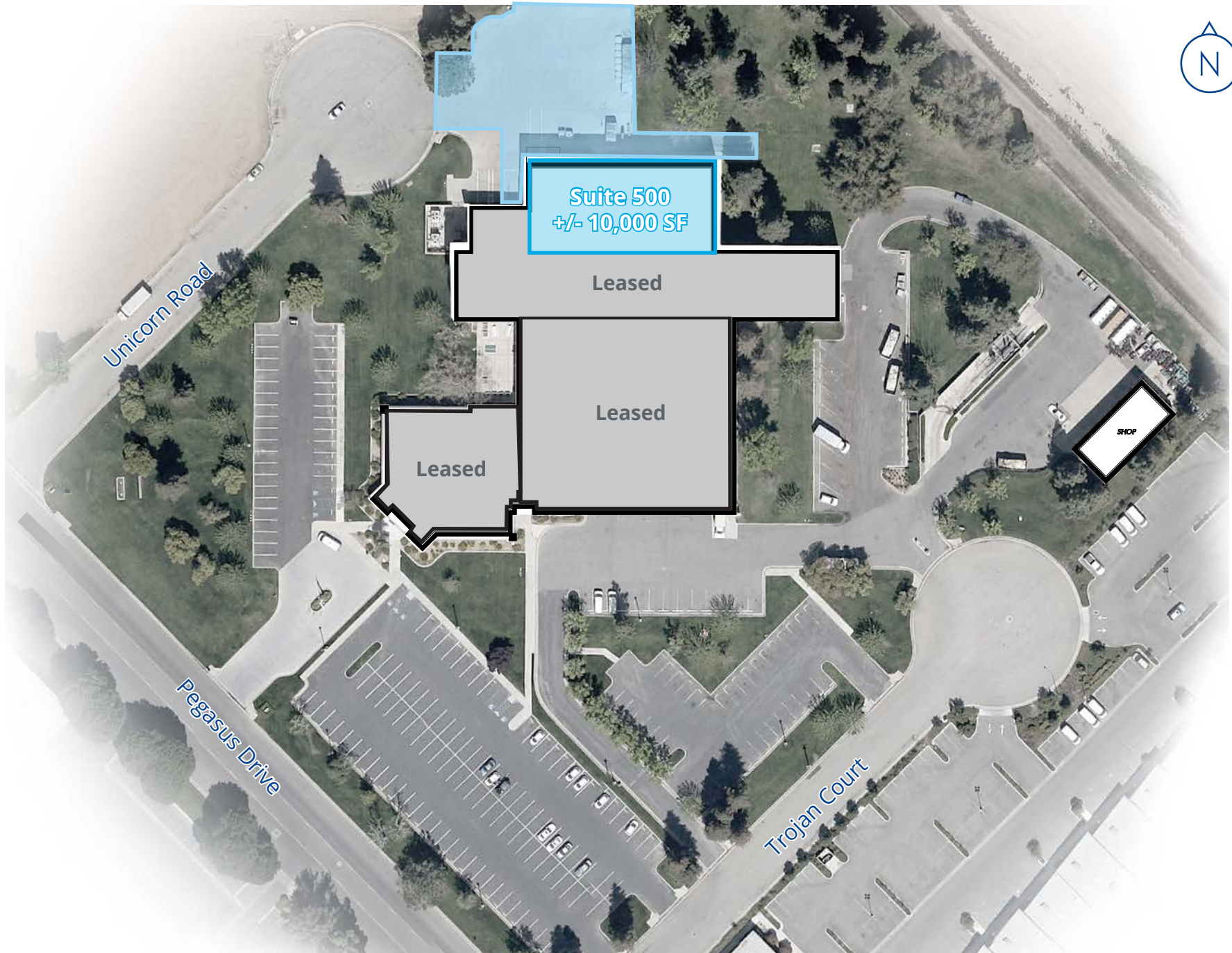
**Suite provides climate-controlled warehouse space with semi-truck high level dock doors.*

Lease Rate:

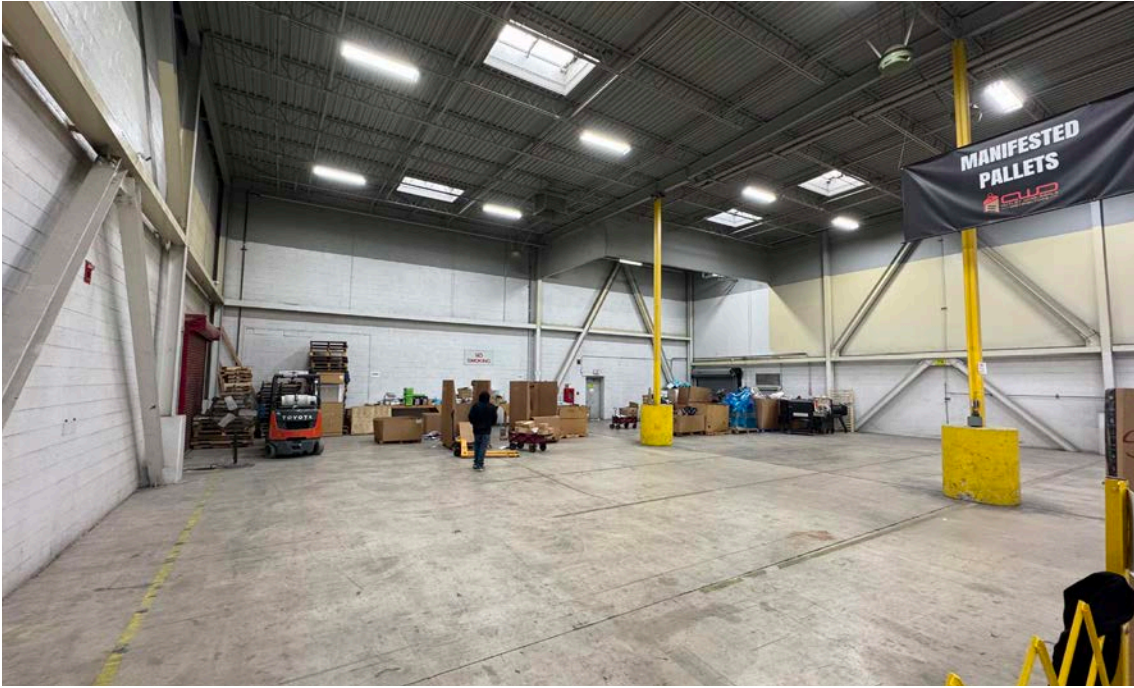
\$0.95/SF Industrial Gross

This document/email has been prepared by Colliers for advertising and general information only. Colliers makes no guarantees, representations or warranties of any kind, expressed or implied, regarding the information including, but not limited to, warranties of content, accuracy and reliability. Any interested party should undertake their own inquiries as to the accuracy of the information. Colliers excludes unequivocally all inferred or implied terms, conditions and warranties arising out of this document and excludes all liability for loss and damages arising there from. This publication is the copyrighted property of Colliers and /or its licensor(s). © 2025. All rights reserved. This communication is not intended to cause or induce breach of an existing listing agreement

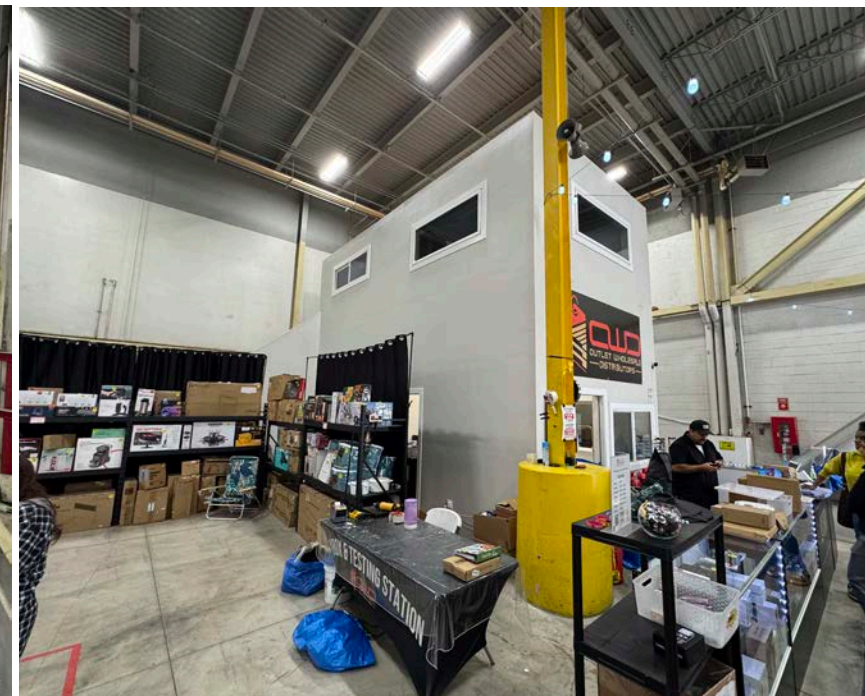
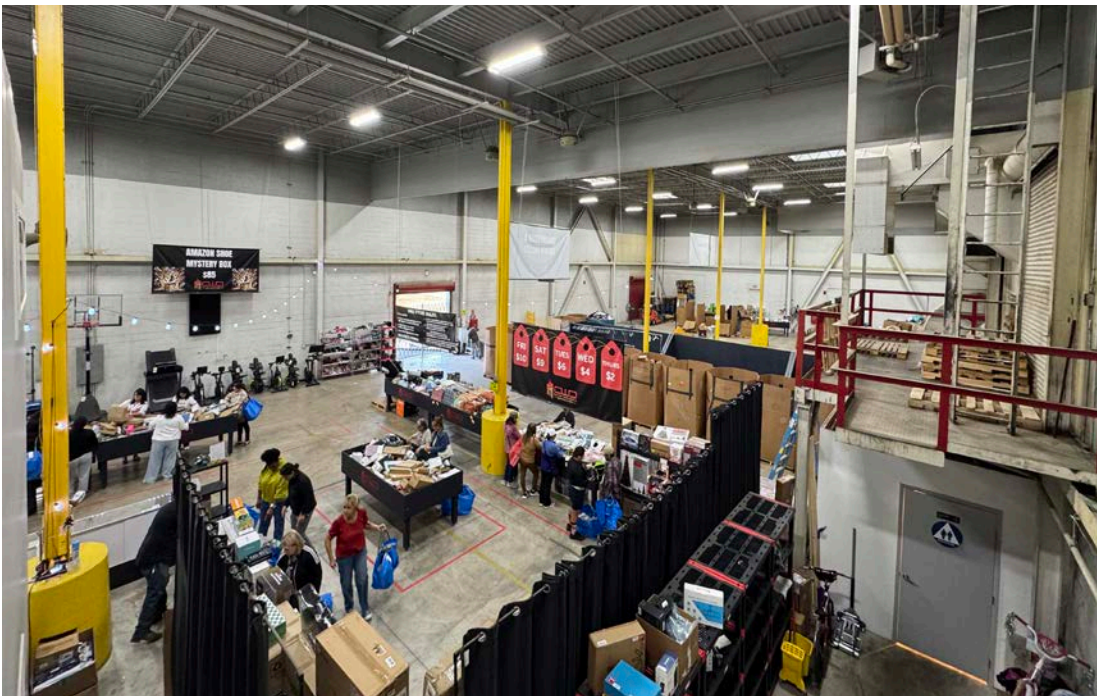
Site Plan



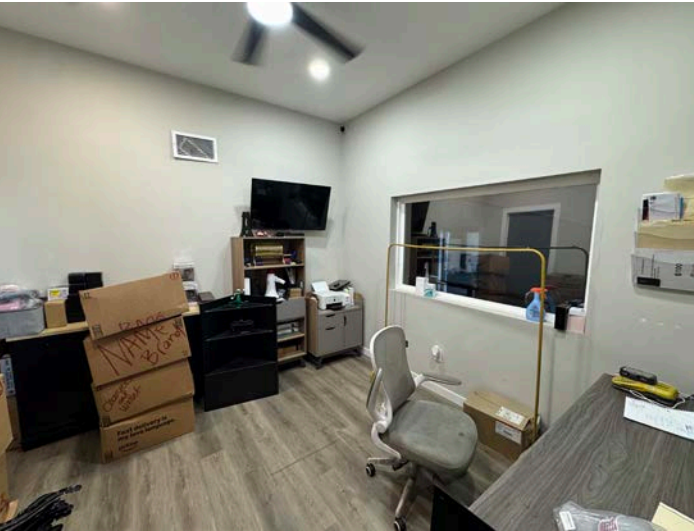
Suite 500



- Approximately 10,000 SF - Total Size
- One (1) dock door
- Three (3) roll-up doors
- Approx. 600 SF of office space
- Interior restroom
- Secured parking and/or yard space
- Power: 225 amp, 480 volt



Suite 500 - Photos



Aerial



This document/email has been prepared by Colliers for advertising and general information only. Colliers makes no guarantees, representations or warranties of any kind, expressed or implied, regarding the information including, but not limited to, warranties of content, accuracy and reliability. Any interested party should undertake their own inquiries as to the accuracy of the information. Colliers excludes unequivocally all inferred or implied terms, conditions and warranties arising out of this document and excludes all liability for loss and damages arising there from. This publication is the copyrighted property of Colliers and /or its licensor(s). © 2025. All rights reserved. This communication is not intended to cause or induce breach of an existing listing agreement.