



Office / Warehouse Space for Lease

520 N 8TH STREET
LAKE CITY, MN 55041

Building Size

336,223 SF Total

Available Space

Option 1:

53,103 SF- Warehouse

Option 2:

12,595 SF- Office

Option 3:

12,595 SF- Office

53,103 SF- Warehouse

65,698 SF - Total

Lease Rates:

\$5.00 PSF- Office

\$3.00 PSF- Warehouse

Property Highlights

- 16' clear height
- One (1) Drive-in Door
- A/C available in warehouse
- On-site Ownership and Management
- Office divisible
- Warehouse divisible

For information, please contact:

Brian Netz

Executive Managing Director

t 612-430-9947

brian.netz@nmrk.com

Lucas Long

Director

t 612-430-9952

lucas.long@nmrk.com

100 South Fifth Street, Suite 2100
Minneapolis, MN 55402

NEWMARK

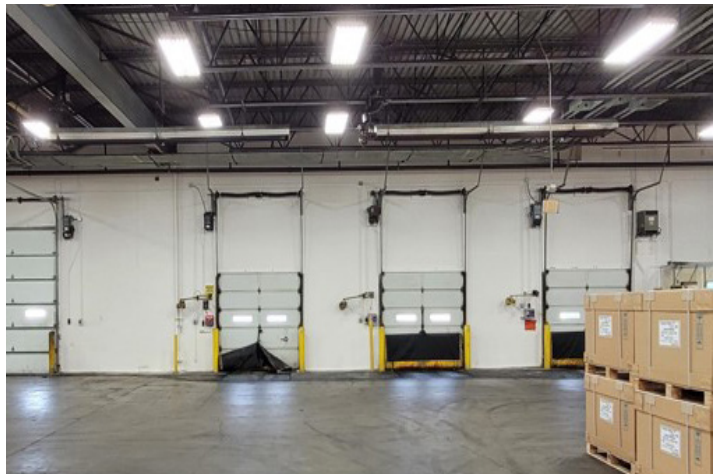
nmrk.com

The information contained herein has been obtained from sources deemed reliable but has not been verified and no guarantee, warranty or representation, either express or implied, is made with respect to such information. Terms of sale or lease and availability are subject to change or withdrawal without notice.

520 N 8TH STREET | LAKE CITY, MN 55041



Photos



CONTACT

Brian Netz

Executive Managing Director

t 612-430-9947

brian.netz@nrmk.com

nrmk.com

Lucas Long

Director

t 612-430-9952

lucas.long@nrmk.com

NEWMARK

