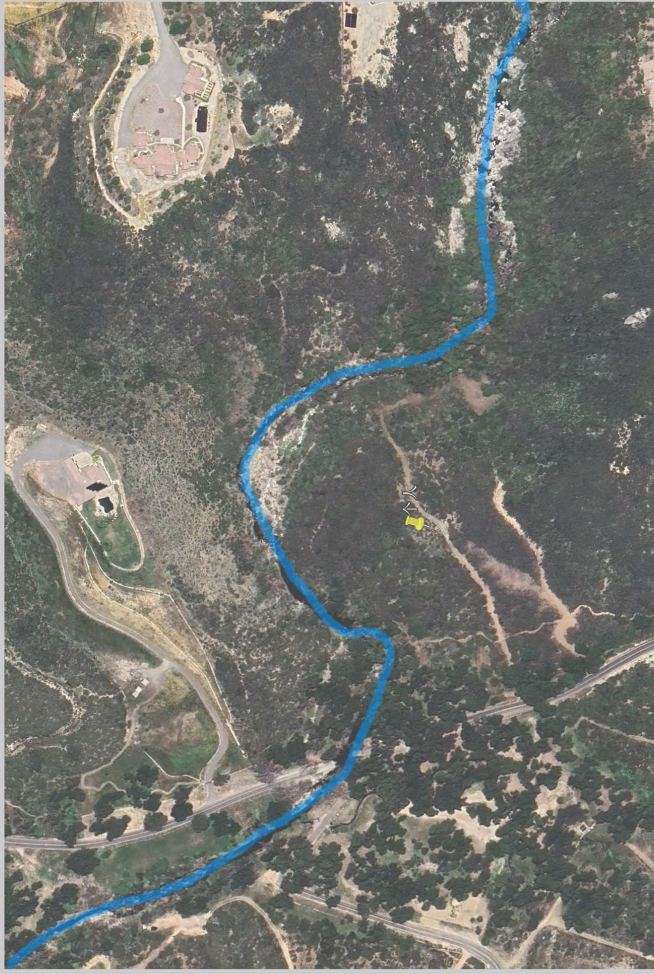


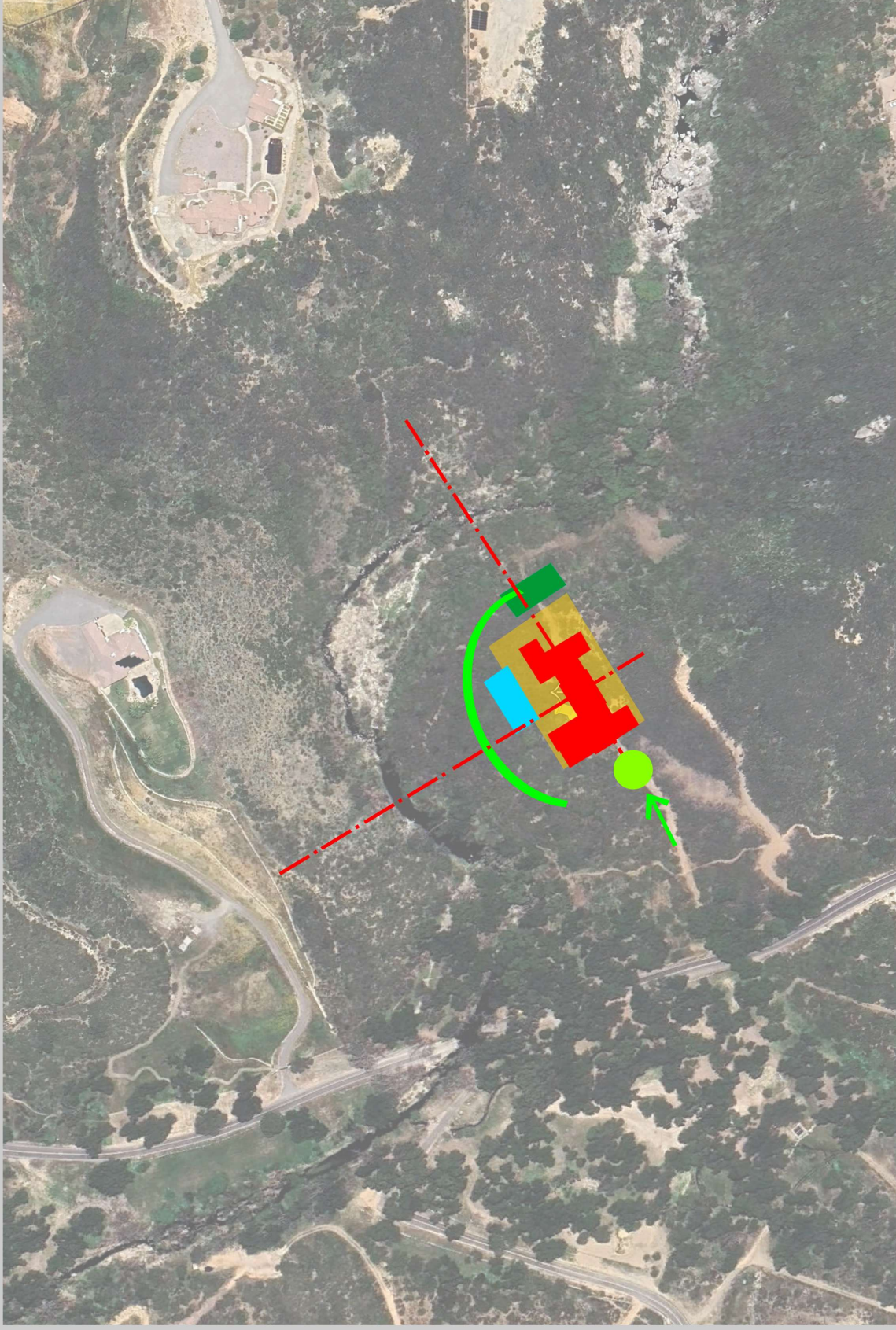
项目距离洛杉矶市约86英里



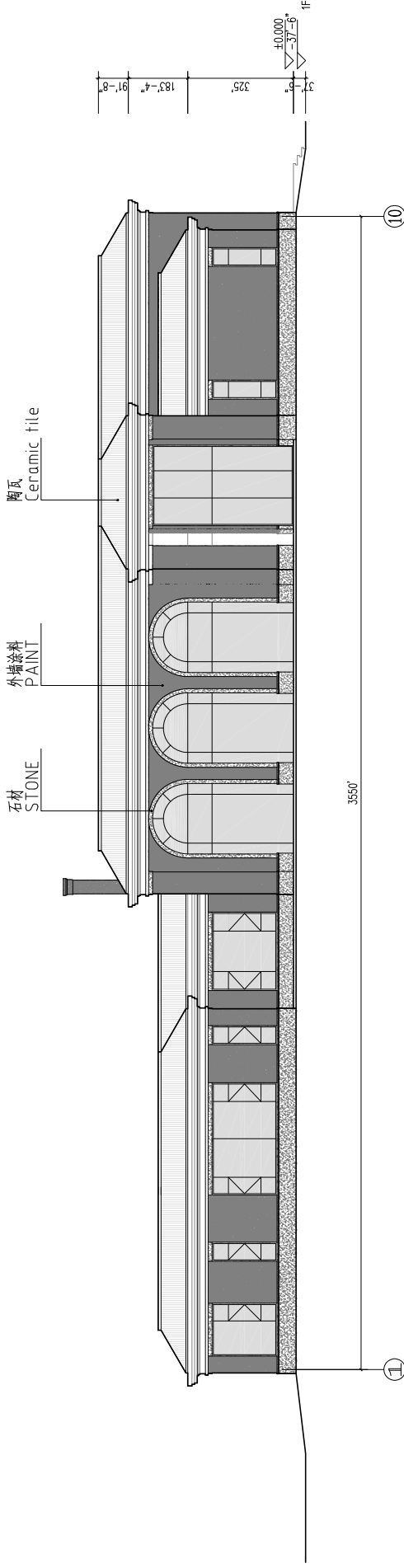
水系贯穿用地



三面有山城环绕

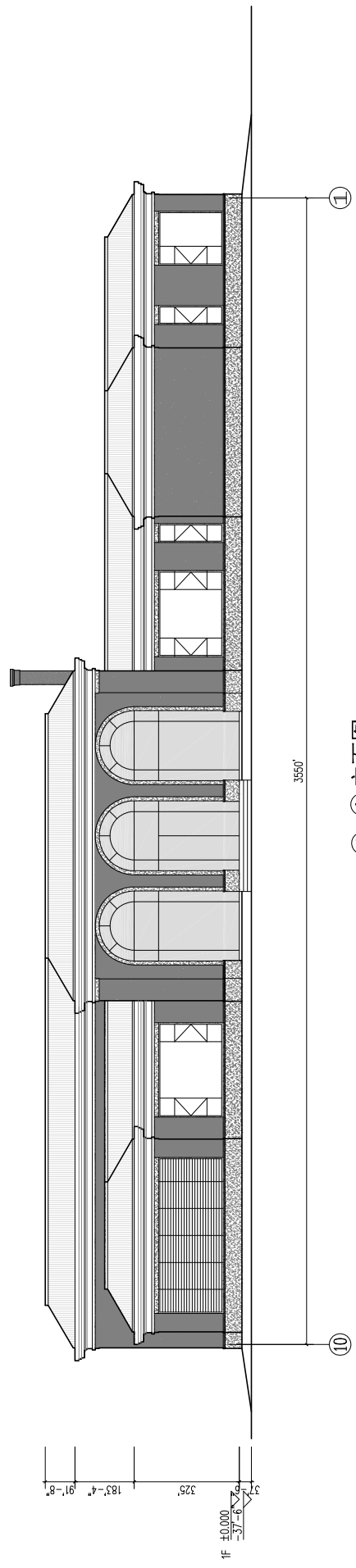


适合建房子的位置位于地块相对平整的一处台地



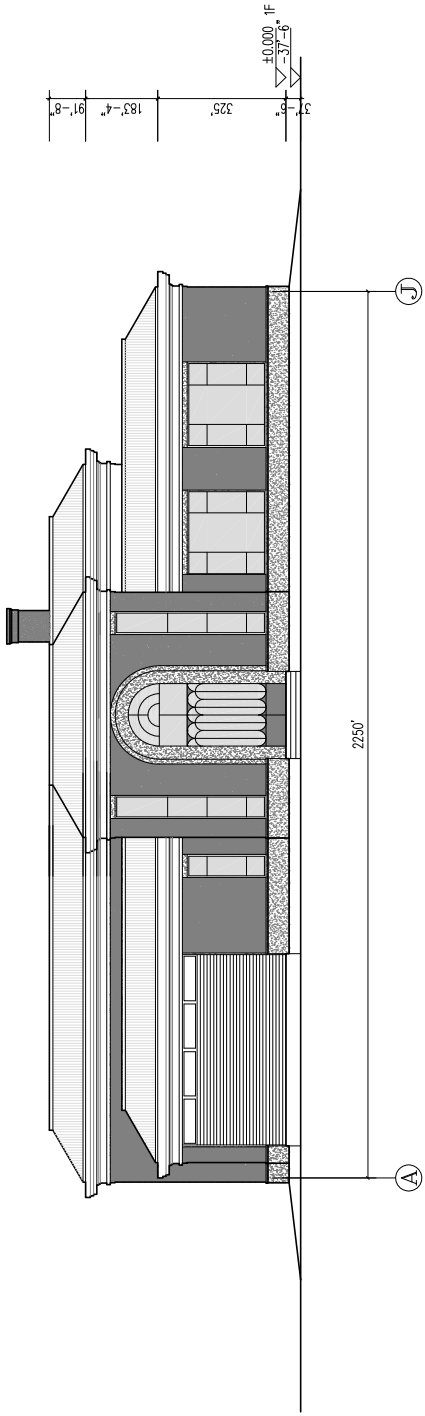
①~⑩立面图

A3 1:150



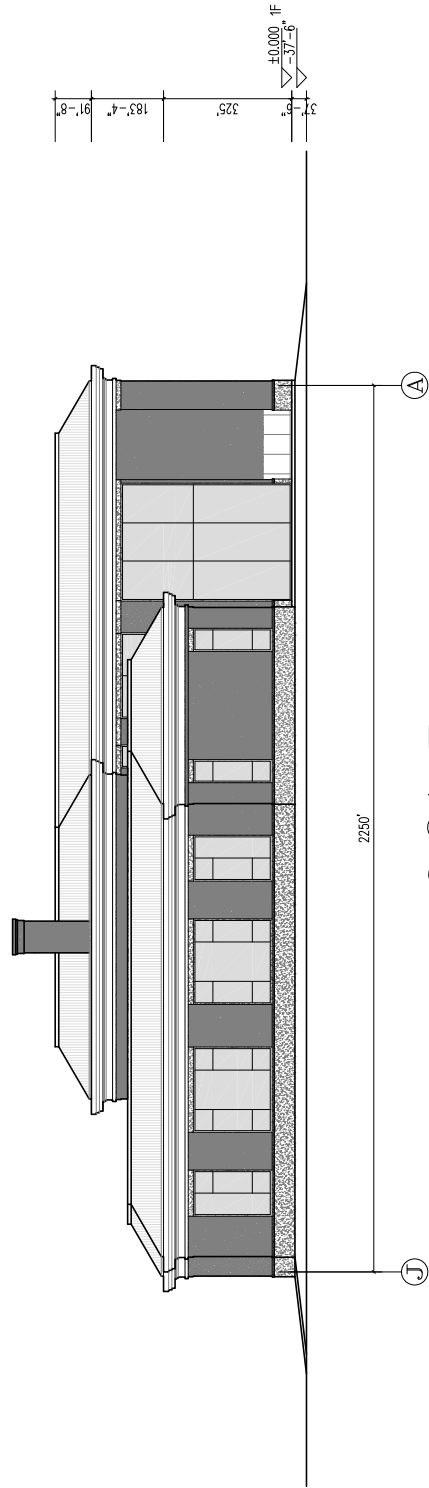
⑩~①立面图

A3 1:150



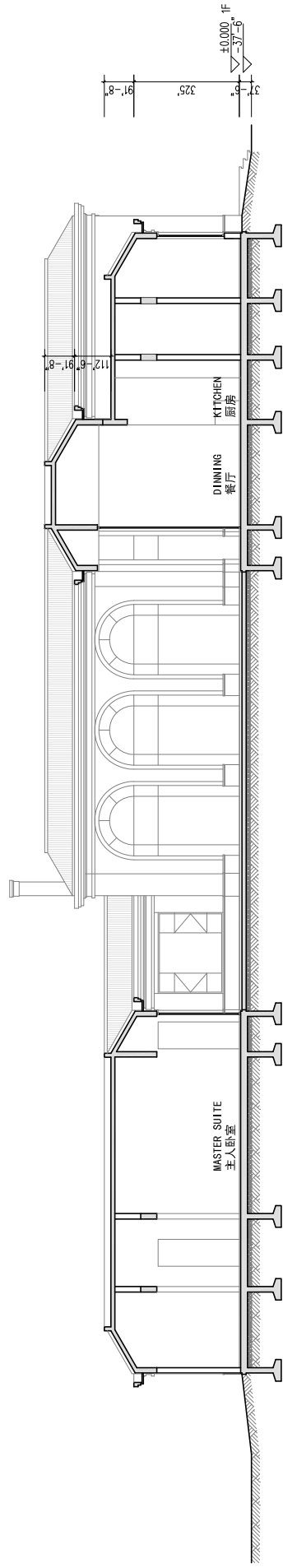
**A-J 立面图**

A3 1:150



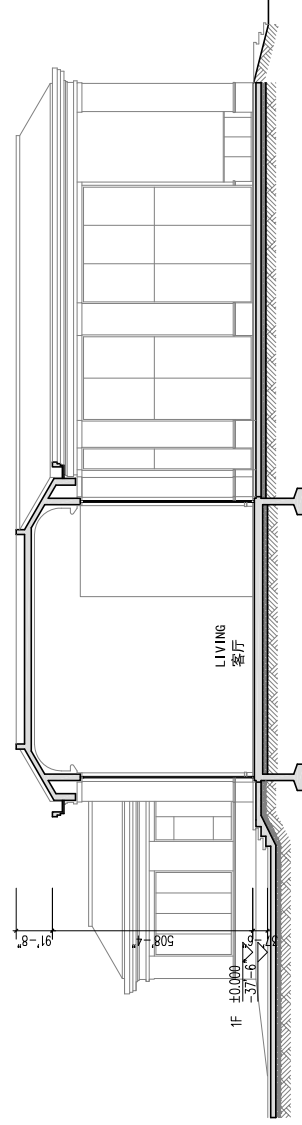
**J-A 立面图**

A3 1:150



1-1 剖面图

A3 1:150



2-2 剖面图

A3 1:150