

# FOR LEASE: CONTRACTOR'S YARD

236 SALMA SCHOOL ROAD,  
MESA, AZ

01



2025 ARMLS

This conveniently located yard space, situated off Alma School Road between Main Street and Broadway Road, offers covered and outside storage. Don't miss out on this rare opportunity to position your storage in a centrally located industrial property.



**Melody Bramer**  
**602-290-3643**  
**mbramer@gmail.com**





**\*Please note the space indicted are vacant and ready for use.**

This Industrial Yard offers flexibility for outside storage is currently for lease with large fenced a large yard in Mesa Arizona.

Prime G.I. zoned property



**Melody Bramer**  
**602-290-3643**  
**mbramer@gmail.com**



# FOR LEASE

02

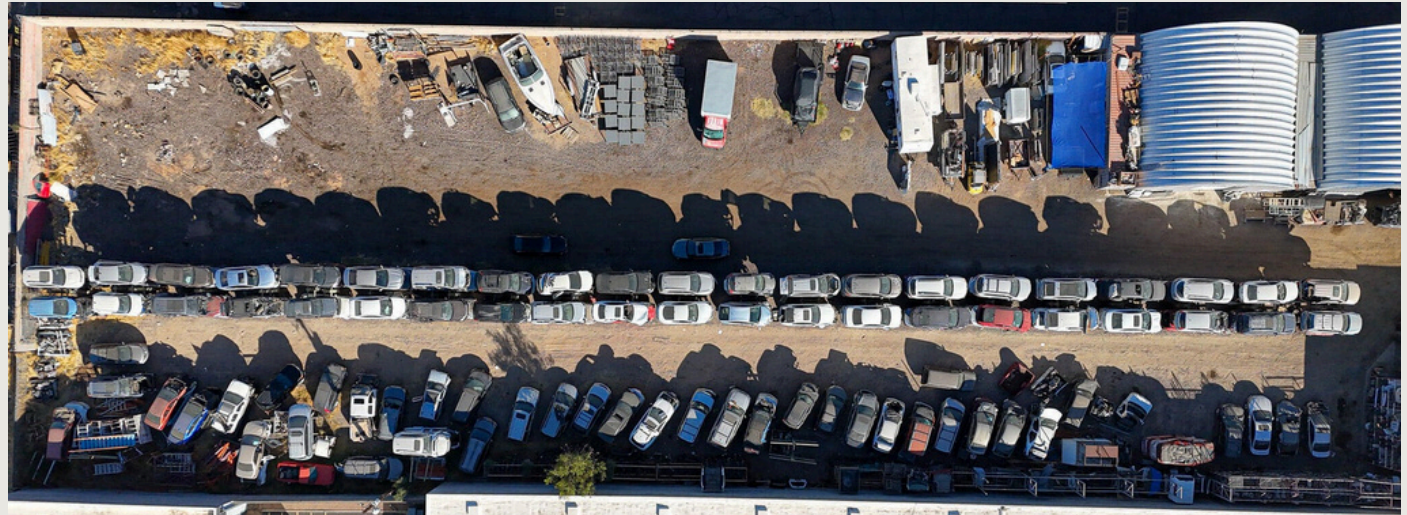
For Lease Fenced Yard Space

Zoning G-1 Industrial

Yard Space (1) 50X120

Yard Space (2) 45X40

Yard Space (3) 45X80



Large gated yard, the city allows outside storage, large trucks, and car storage at this site.



**Melody Bramer**  
**602-290-3643**  
**mbramer@gmail.com**





<b>Demographics</b>	<b><u>1 mile</u></b>	<b><u>3 miles</u></b>
<b>Population</b>	<b>24,280</b>	<b>164,681</b>
<b>Households</b>	<b>9,201</b>	<b>65,041</b>
<b>Median Age</b>	<b>32.10</b>	<b>33</b>
<b>Median HH Income</b>	<b>\$46,885</b>	<b>\$51,506</b>
<b>Daytime Employees</b>	<b>7,716</b>	<b>90,181</b>

### Population Growth '24 - '29

7.81%

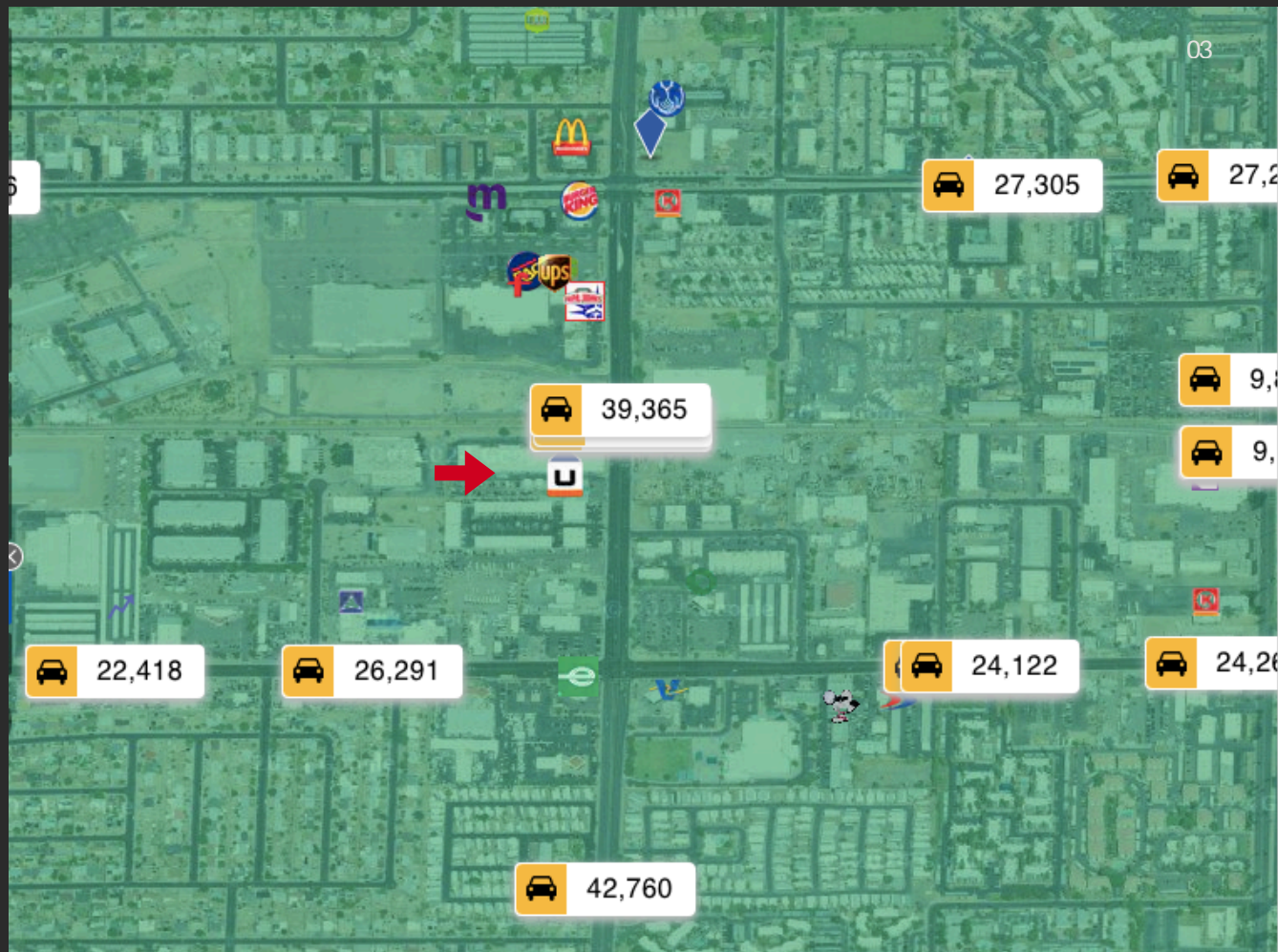
8.20%

### Household Growth '24 - '29

7.97%

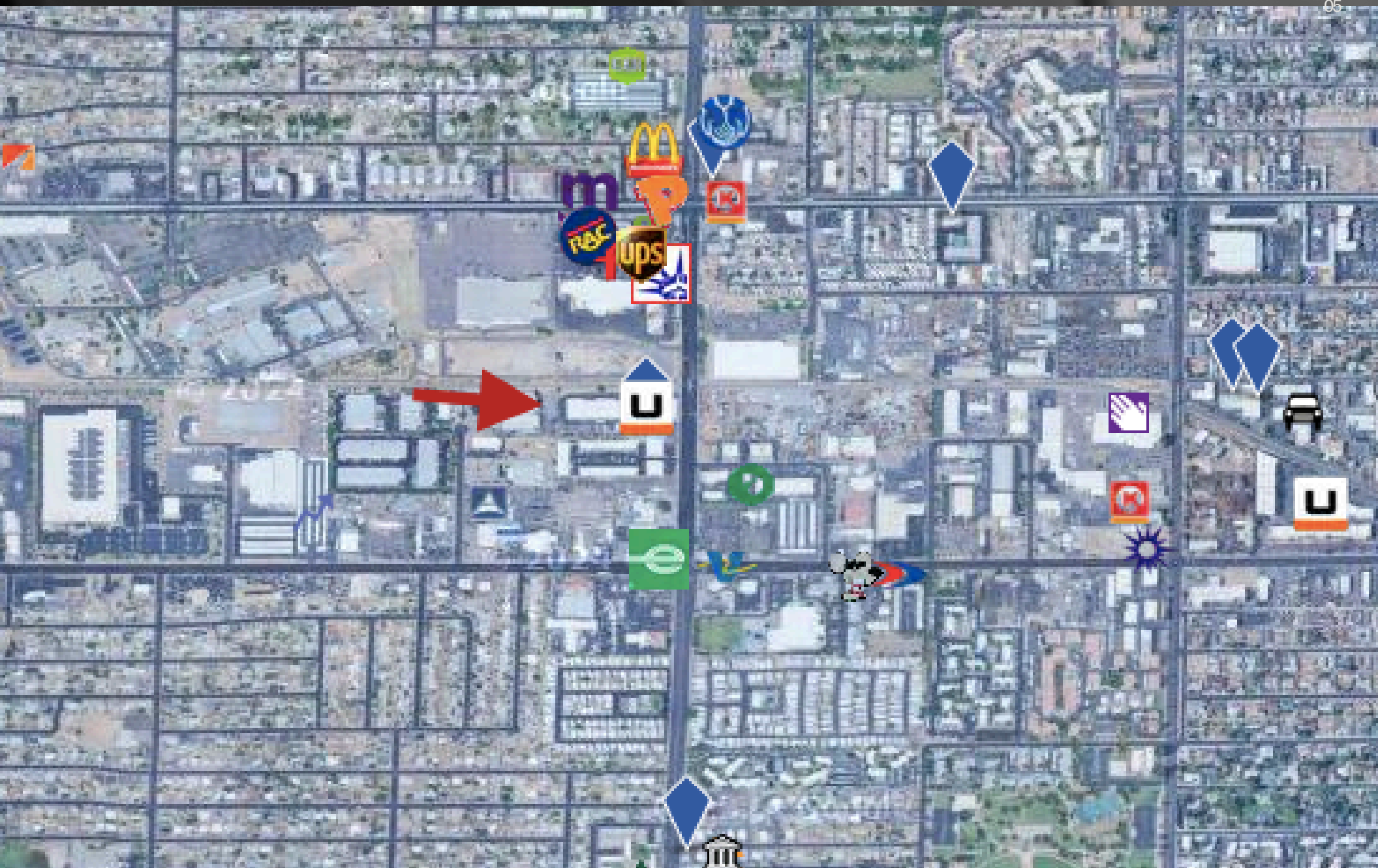
8.40%

**Traffic Count      31,365**



**Melody Bramer**  
**602-290-3643**  
**mbramer@gmail.com**





**Melody Bramer**  
**602-290-3643**  
**mbramer@gmail.com**





# PHOTO GALLERY



**Melody Bramer**  
**602-290-3643**  
**mbramer@gmail.com**

