



PROPERTY DESCRIPTION

Exceptional Retail/Office Space in Hockessin's Heart! An opportunity seldom seen, this space is nestled within the thriving Hockessin Crossing Shopping Center, where Six Paupers Restaurant, Polished Nail Salon, Gonce Dentistry, Children of America, Domino's Pizza, and more already flourish. Situated at the strategic junction of Route 41 and Valley Road, this location offers high visibility at a signalized intersection.

PROPERTY DETAILS

- **Available: 1,437-7,019 SF**
- **Building 1: First Floor**
 - > **Retail:** 2,255 SF (Former DNA Roofing)
 - > **Retail:** 4,000 SF (Former Wells Fargo)
 - > **Retail:** 1,582 SF (former hair salon)
 - > **Retail:** 1,437 SF (former dry cleaner/shell space)
- **Lease Rate:** \$25/SF/NNN

DEMOGRAPHICS (2020)	1 MILE	3 MILES	5 MILES
Population	4,581	30,193	84,934
Households	1,624	10,822	31,296
Average Household Income	\$140,995	\$157,633	\$130,930
Median Age	47.4	47.8	44.2



For More Information, Contact:

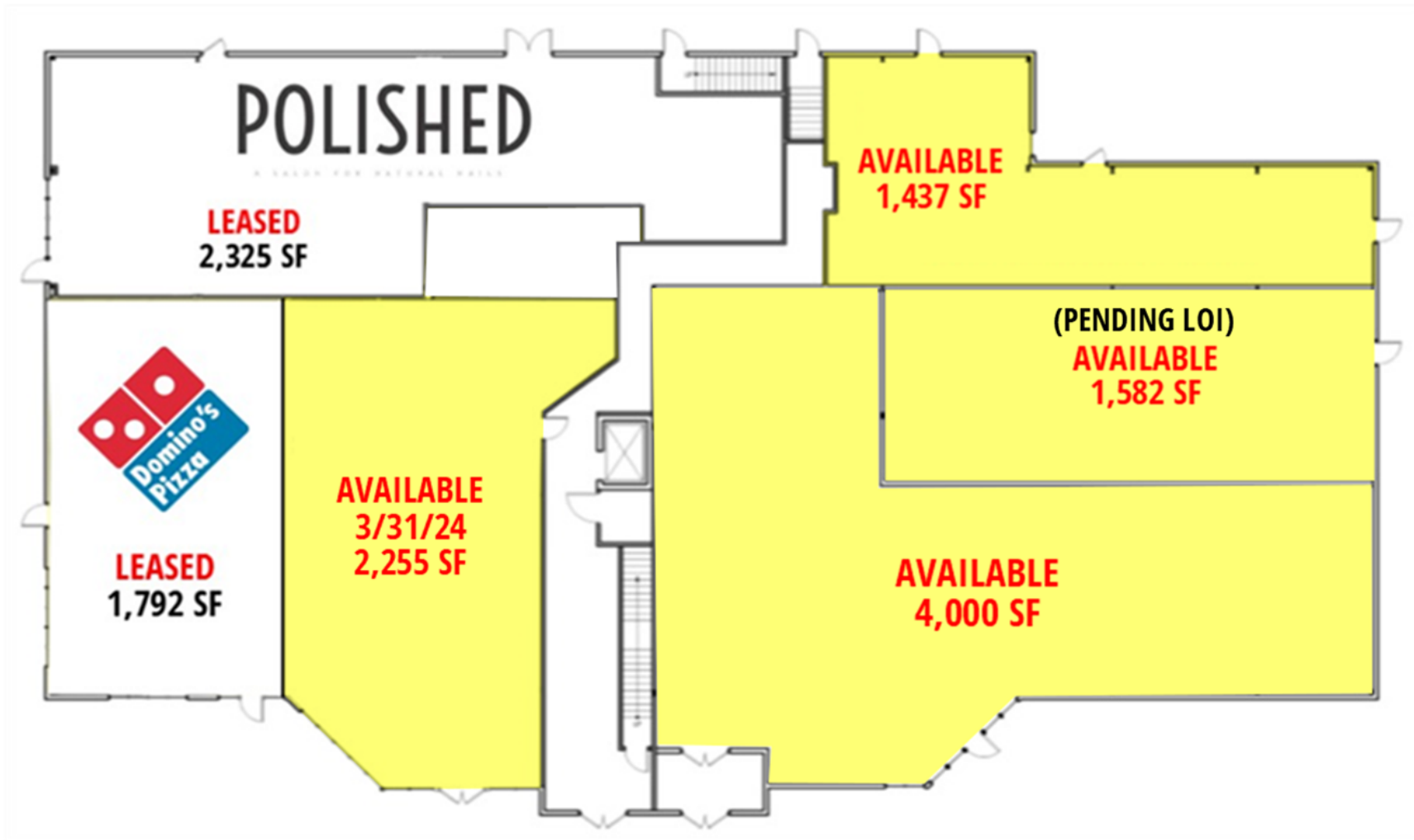
Dan Wham
dwham@dsmre.com
302.283.1800 Office
302.249.9744 Cell

Griffin Conaty
gconaty@dsmre.com
302.283.1800 Office
302.545.2061 Cell

DSM Commercial
Real Estate Services
3304 Old Capitol Trail
Wilmington, DE 19808
dsmre.com



BUILDING 1: FIRST FLOOR PLAN

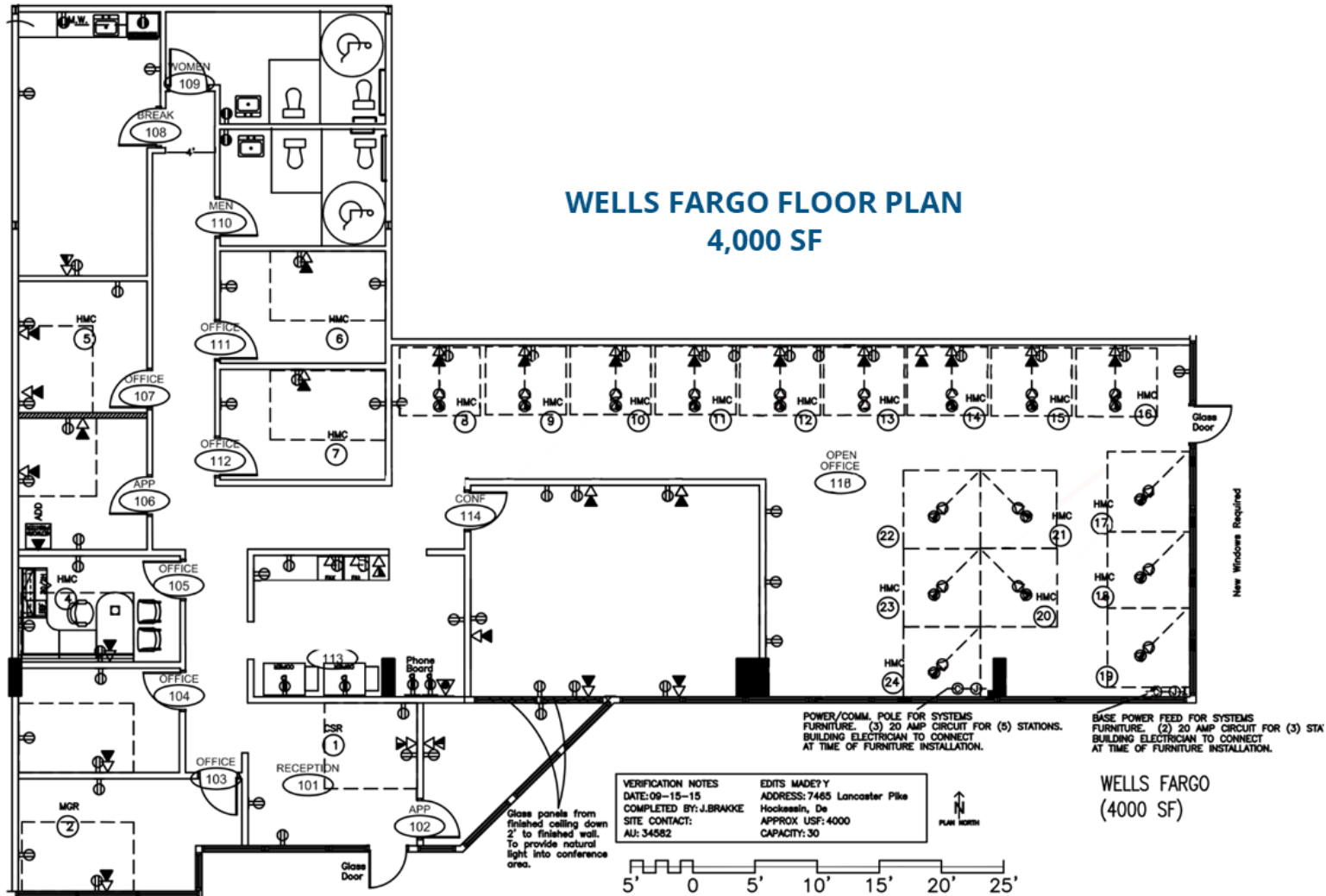


For More Information, Contact:

Dan Wham
dwham@dsmre.com
302.283.1800 Office
302.249.9744 Cell

Griffin Conaty
gconaty@dsmre.com
302.283.1800 Office
302.545.2061 Cell

DSM Commercial
Real Estate Services
3304 Old Capitol Trail
Wilmington, DE 19808
dsmre.com



For More Information, Contact:

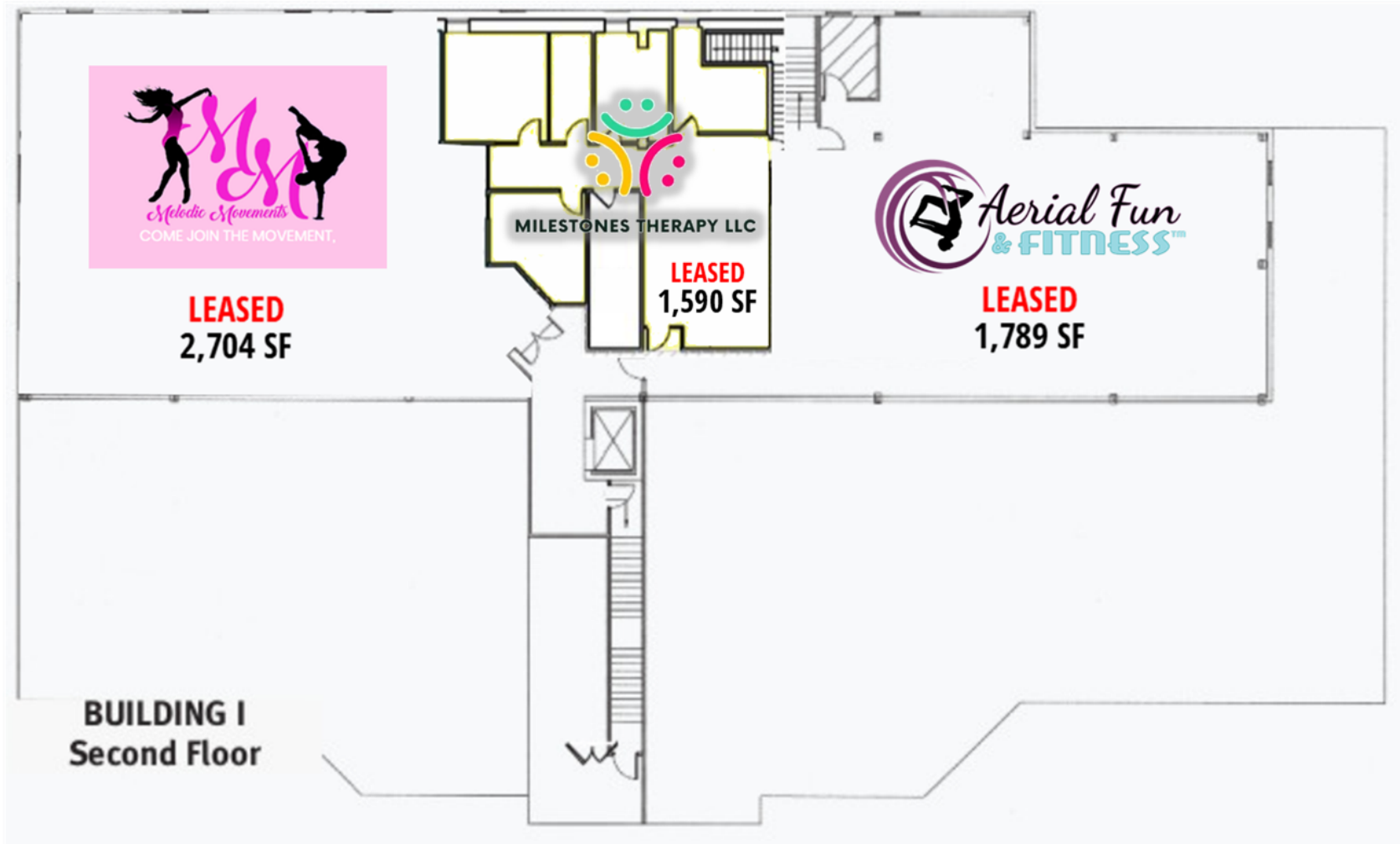
Dan Wham
dwham@dsmre.com
302.283.1800 Office
302.249.9744 Cell

Griffin Conaty
gconaty@dsmre.com
302.283.1800 Office
302.545.2061 Cell

DSM Commercial
Real Estate Services
3304 Old Capitol Trail
Wilmington, DE 19808
dsmre.com



BUILDING 1: SECOND FLOOR PLAN



For More Information, Contact:

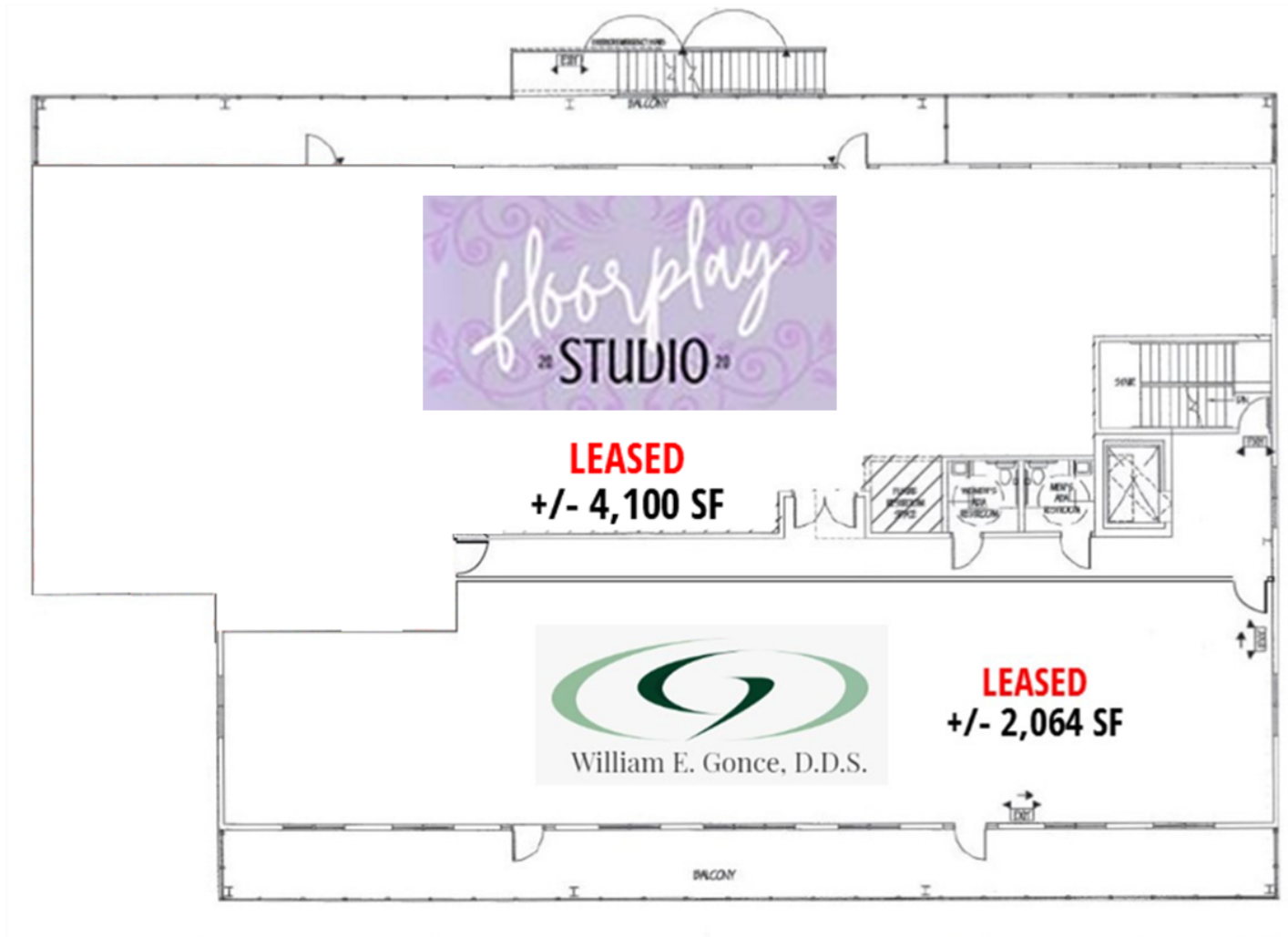
Dan Wham
dwham@dsmre.com
302.283.1800 Office
302.249.9744 Cell

Griffin Conaty
gconaty@dsmre.com
302.283.1800 Office
302.545.2061 Cell

DSM Commercial
Real Estate Services
3304 Old Capitol Trail
Wilmington, DE 19808
dsmre.com



1127 VALLEY ROAD: SECOND FLOOR PLAN



For More Information, Contact:

Dan Wham
dwham@dsmre.com
302.283.1800 Office
302.249.9744 Cell

Griffin Conaty
gconaty@dsmre.com
302.283.1800 Office
302.545.2061 Cell

DSM Commercial
Real Estate Services
3304 Old Capitol Trail
Wilmington, DE 19808
dsmre.com



For More Information, Contact:

Dan Wham
dwham@dsmre.com
302.283.1800 Office
302.249.9744 Cell

Griffin Conaty
gconaty@dsmre.com
302.283.1800 Office
302.545.2061 Cell

DSM Commercial
Real Estate Services
3304 Old Capitol Trail
Wilmington, DE 19808
dsmre.com