



1669 Hamilton Rd

Okemos, Michigan 48864

Property Highlights

- Meridian Professional Building
- Suite 220 - 2,693 SF
- Medical Space
- Corner of Dobie Rd and Hamilton Rd. South Side of Hamilton.

Offering Summary

Lease Rate:	\$14.00 SF/yr (MG)
Building Size:	10,293 SF
Available SF:	2,693 SF
Lot Size:	47,176 SF

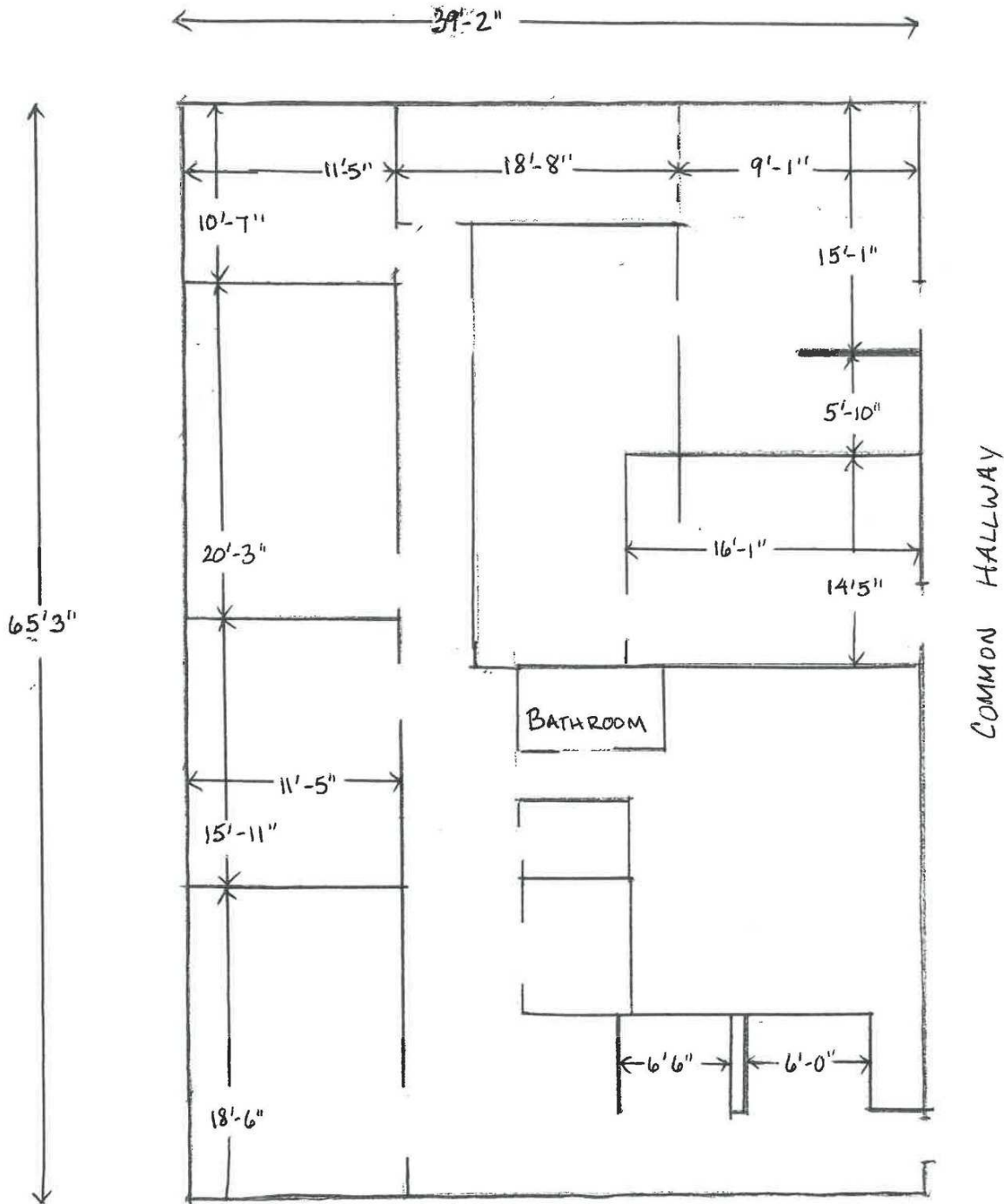
For More Information

Amanda Hopper

O: 517 487 9222 | C: 517 927 9626

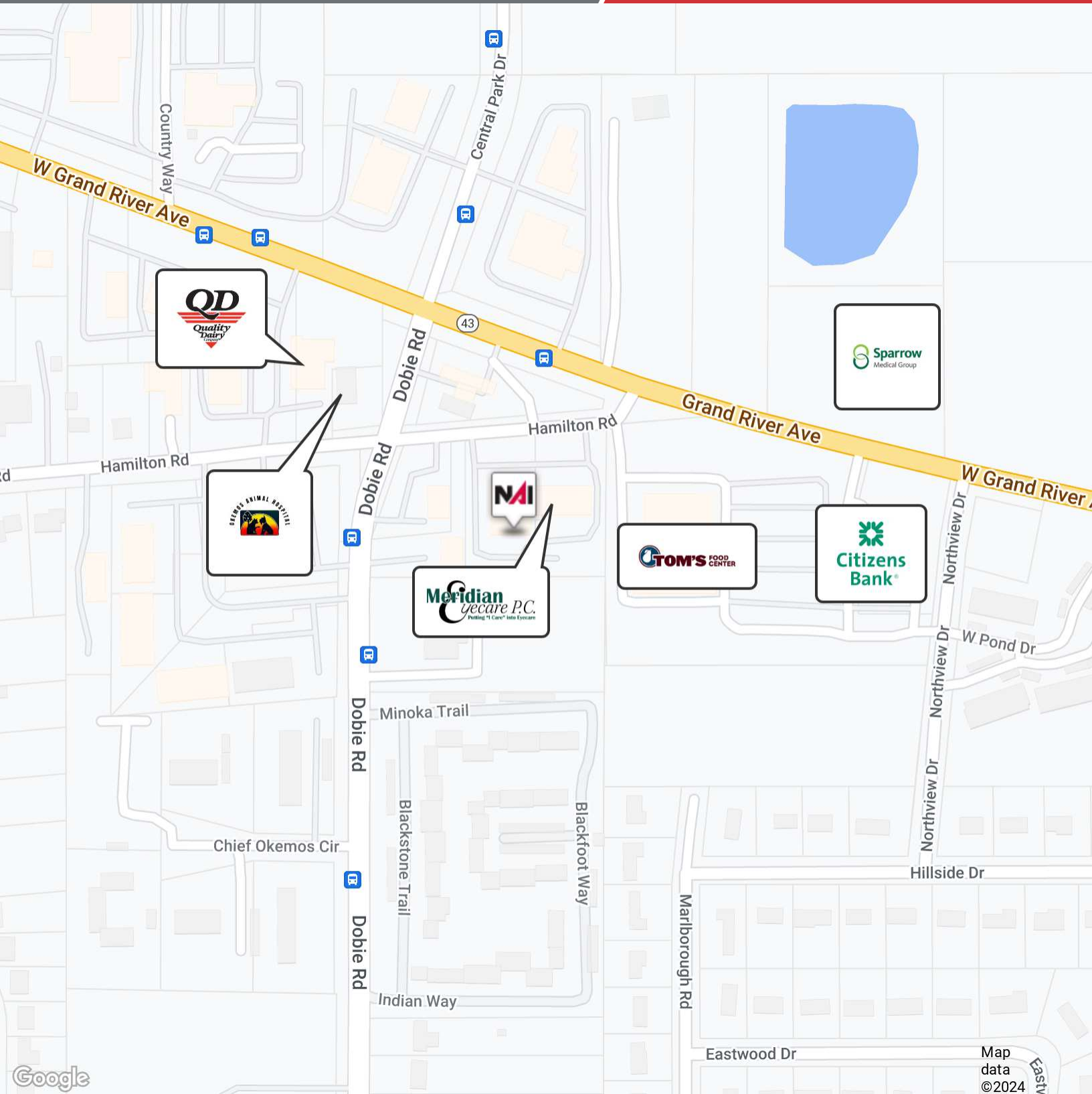
ahopper@naimidmichigan.com

1669 HAMILTON RD - OKEMOS



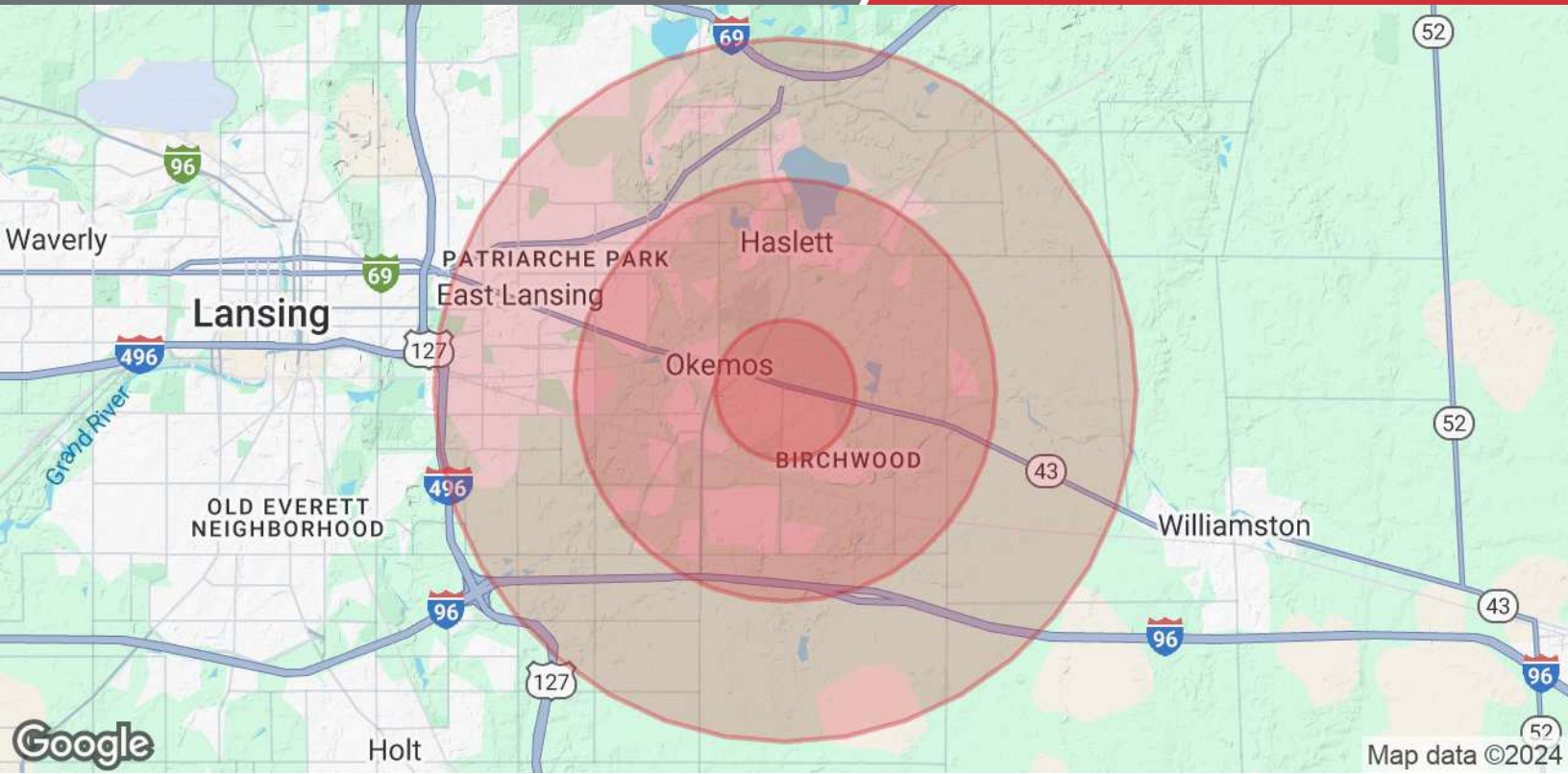
SUITE 220

NTS - PRELIMINARY



NO WARRANTY OR REPRESENTATION, EXPRESS OR IMPLIED, IS MADE AS TO THE ACCURACY OF THE INFORMATION CONTAINED HEREIN, AND THE SAME IS SUBMITTED SUBJECT TO ERRORS, OMISSIONS, CHANGE OF PRICE, RENTAL OR OTHER CONDITIONS, PRIOR SALE, LEASE OR FINANCING, OR WITHDRAWAL WITHOUT NOTICE, AND OF ANY SPECIAL LISTING CONDITIONS IMPOSED BY OUR PRINCIPALS. NO WARRANTIES OR REPRESENTATIONS ARE MADE AS TO THE CONDITION OF THE PROPERTY OR ANY HAZARDS CONTAINED THEREIN ARE INTENDED TO BE IMPLIED.

2149 Jolly Road, Suite 200
Okemos, MI 48864
517 487 9222 tel
naimidmichigan.com



Population	1 Mile	3 Miles	5 Miles
Total Population	6,348	41,376	91,009
Average Age	38.6	36.8	33.8
Average Age (Male)	33.6	35.0	32.5
Average Age (Female)	40.1	37.5	34.5
Households & Income	1 Mile	3 Miles	5 Miles
Total Households	2,650	16,958	34,495
# of Persons per HH	2.4	2.4	2.6
Average HH Income	\$105,361	\$99,418	\$89,808
Average House Value	\$274,269	\$236,004	\$212,177

2020 American Community Survey (ACS)