

FOR LEASE



FLEX SPACE WITH FENCED YARD
JUST 5 MIN FROM SKY HARBOR

3440-3450 E VAN BUREN STREET, PHOENIX, AZ 85008

**FOR
LEASE**

AVAILABLE

The information contained herein has been obtained from various sources. We have no reason to doubt its accuracy; however, J & J Commercial Properties, Inc. has not verified such information and makes no guarantee, warranty or representation about such information. The prospective buyer or lessee should independently verify all dimensions, specifications, floor plans, and all information prior to the lease or purchase of the property. All offerings are subject to price change, prior sale, lease, or withdrawal from the market without prior notice. 08.06.24

CENPHX C-3 COMMERCIAL SPACE NEAR SKY HARBOR AIRPORT

Kyle Davis
D: 480.889.2566
M: 203.419.5385
kdavis@cpiaz.com

CJ Barnett
D 480.889.2553
M 480.862.2775
cbarnett@cpiaz.com



COMMERCIAL PROPERTIES INC.

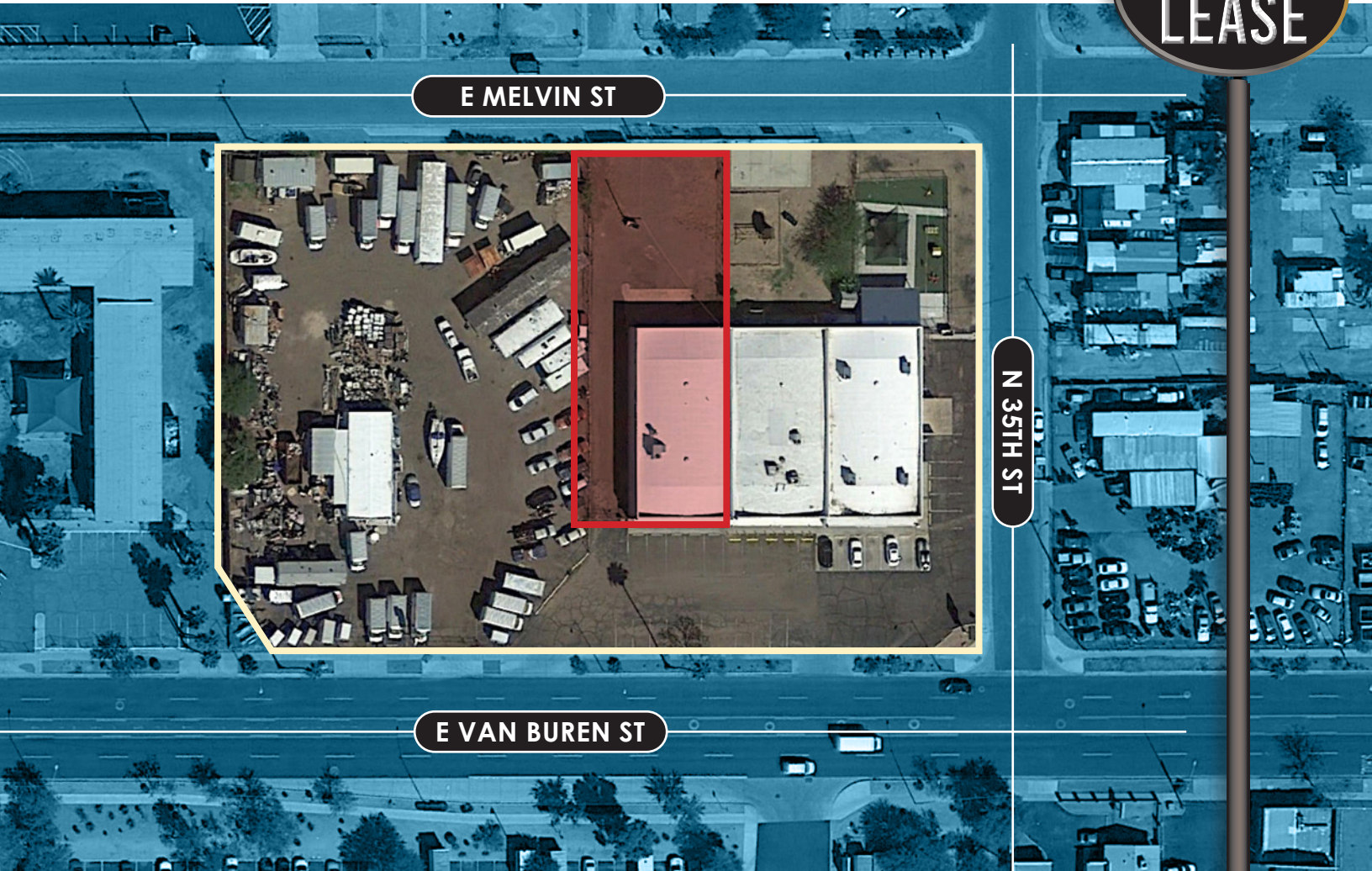
Locally Owned. Globally Connected. CORFAC INTERNATIONAL
2323 W. University Dr. Tempe, AZ 85281
8777 N. Gainey Center Dr. Ste 245, Scottsdale, AZ 85258
480.966.2301 | WWW.CPIAZ.COM



CENPHX C-3 COMMERCIAL SPACE NEAR SKY HARBOR AIRPORT

3440-3450 E VAN BUREN STREET, PHOENIX, AZ 85008

**FOR
LEASE**



ABOUT THE PROPERTY



- Roll-Up Grade-Level Door
- Van Buren Frontage
- 5 MINUTES from Phx Airport
- ±5,000 SF
- Zoned C3, City of Phoenix

Kyle Davis
 D: 480.889.2566
 M: 203.419.5385
 kdavis@cpiaz.com

CJ Barnett
 D 480.889.2553
 M 480.862.2775
 cbarnett@cpiaz.com



CENPHX C-3 COMMERCIAL SPACE NEAR SKY HARBOR AIRPORT

3440-3450 E VAN BUREN STREET, PHOENIX, AZ 85008

FOR LEASE

- 3450 E Van Buren St
- ±5,000 SF Building
- Includes ±6,693 SF Yard
- Zoned C3, City of Phoenix
- (1) Roll-Up Grade-Level Door
- Unique Signage Opportunity
- Contact Agent For Rates



CURRENT AVAILABILITY



Kyle Davis
 D: 480.889.2566
 M: 203.419.5385
 kdavis@cpi.az.com

CJ Barnett
 D 480.889.2553
 M 480.862.2775
 cbarnett@cpi.az.com