



SCHRAFFT'S

City Center

529 MAIN ST, CHARLESTOWN

AVISON
YOUNG

This **legendary**
building was formerly
the manufacturing site
of the **iconic**
SCHRAFFT'S
CANDY FACTORY





The building was purchased and renovated by The Flatley Company in 1984 and is considered a Boston landmark with its distinctive neon sign and beautiful water views.

The 529 Main Street building has a beautiful new entrance, lobby, waterfront and landscaping upgrades.



The Schrafft Center complex also includes an office building at 465 Medford Street and an industrial building at 425 Medford Street. The 465 Medford Street building has recently been renovated with a brand new lobby, entrance and landscaping upgrades.



BUILDING amenities



- On-site property management team
- Indoor & outdoor covered bike storage at 529 Main Street & 465 Medford Street
- Seasonal Rooftop Farming
- Sponsored events at building, & adjacent athletic fields
- Waterfront walking trail

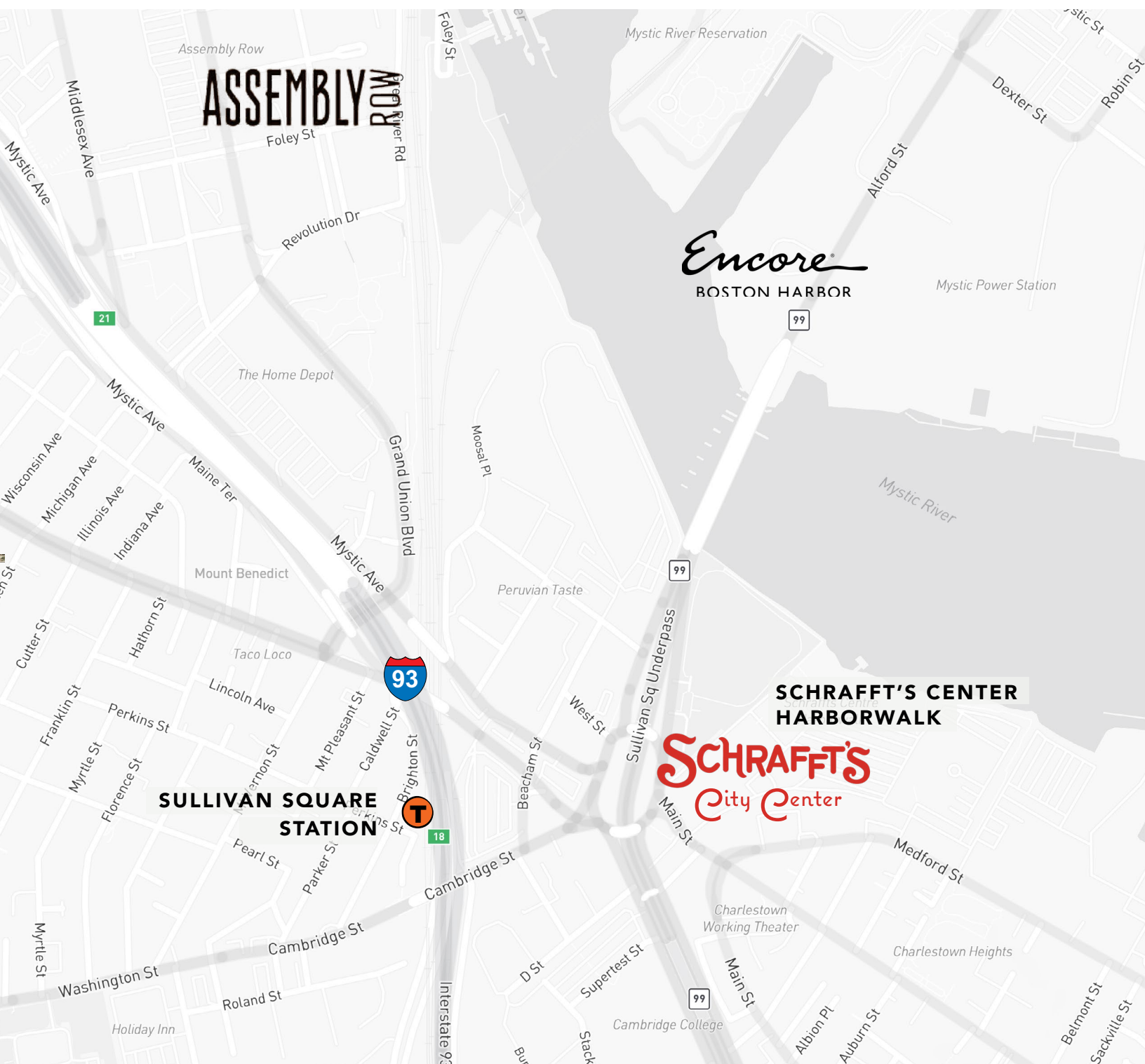


- FIT Gym
- Cafeteria – hours of operation:
7 am- 2 pm
- Coffee Bar – hours of operation:
7 am- 2 pm
- Bright Horizons Child Care Center



Schrafft's boasts a prime location with convenient access to a variety of shopping options, from large retail centers to boutique shops, catering to both daily necessities and specialty items. Nearby, a diverse selection of restaurants, ranging from cozy cafes to upscale dining establishments, provides a wide range of culinary experiences.

For visitors or business travelers, several hotels in the vicinity offer comfortable lodging with easy access to the office park. Parents can find nearby childcare facilities providing professional care and educational activities.



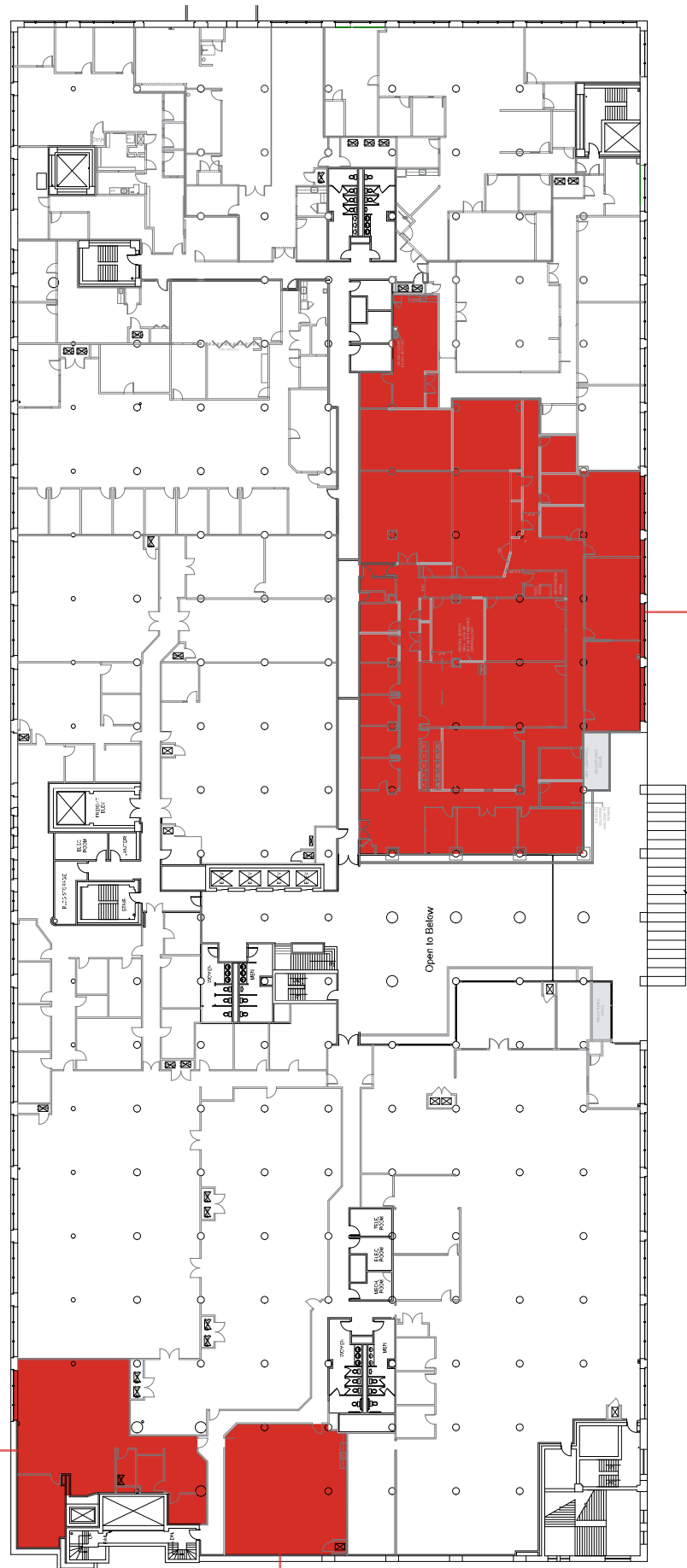
LOCAL amenities

- Adjacent to the Sullivan Square MBTA Station
- Just over ¼ mile to nearest BLUEbikes station
- Easy access to I-93, downtown Boston, Kendall Square & Logan Airport
- Close proximity to the Assembly Square shopping district & Encore Boston Harbor Casino



FIRST FLOOR
mezzanine

**THREE SUITES
AVAILABLE**



15,608 SF
SUITE 1105

2,500 SF
SUITE 1113

1,849 SF | SPEC
SUITE 1112



SECOND FLOOR

**CONTIGUOUS
SUITES AVAILABLE**

12,425 SF - 20,049 SF

SUITE 2212

THIRD FLOOR

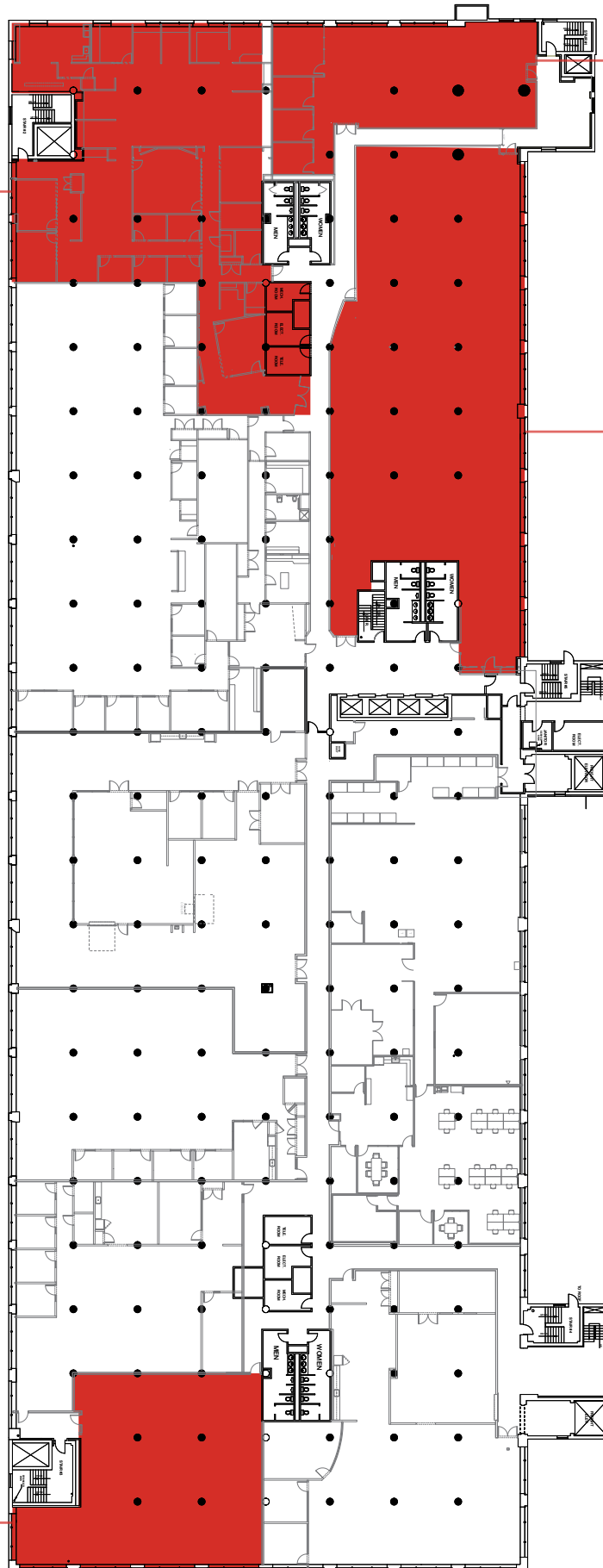
FOUR SUITES
AVAILABLE

7,800 SF
SUITE 3303

4,328 SF
SUITE 3304

10,475 SF
SUITE 3302

5,412 SF
SUITE 3321





FIRST FLOOR | MEZZANINE | SUITE 1105



THIRD FLOOR | SUITE 3304



THIRD FLOOR | SUITE 3302



THIRD FLOOR | SUITE 3304



THIRD FLOOR | SUITE 3304

SCHRAFFT'S

City Center

KIRK WELLER

Senior Vice President

+1 781 733 7814

kirk.weller@avisonyoung.com

CONNOR HAYES

Vice President

+1 617 993 0721

connor.hayes@avisonyoung.com

200 State Street | Floor 15 | Boston, MA 02109

© 2026, Avison Young - New England, LLC. The information contained herein was obtained from sources which we deem reliable and, while thought to be correct, is not guaranteed by Avison Young and as such, cannot be warranted nor form any part of any future contract.

AVISON
YOUNG