

8080  
— NCX —



 **FORGE**  
COMMERCIAL

# 8080 —NCX—

-  Central Dallas Location
-  Renovations Coming in 2024
-  Conference Facility
-  Building Signage Available
-  Floor-to-Ceiling Glass Windows
-  4/1,000 SF Parking
-  100% Structured Parking
-  24/7 Security
-  On-site Management and Engineering



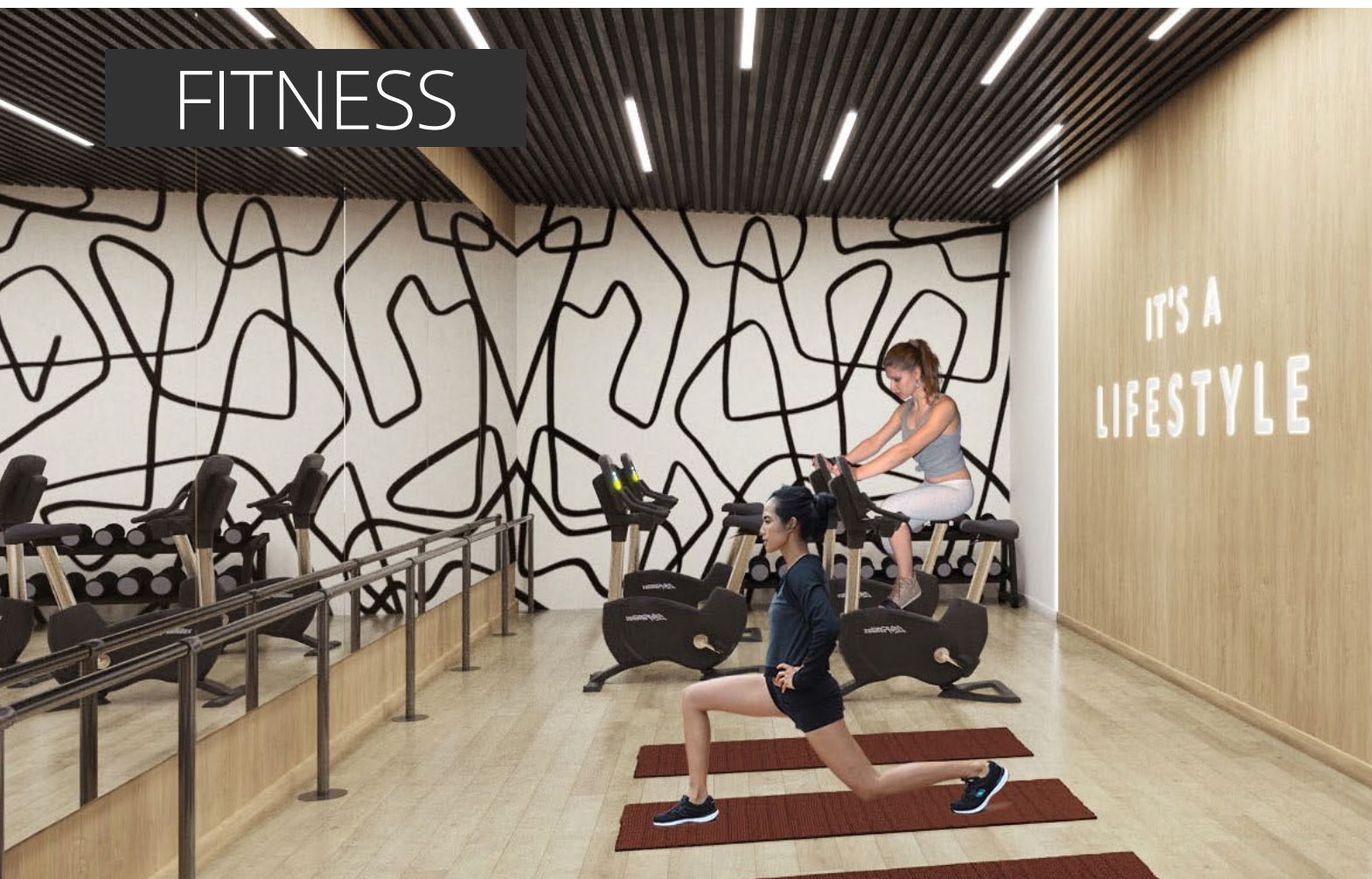
# CAFE



# LOUNGE



# FITNESS



MODERN +  
*Traditional*

# NEW 40-PERSONS TRAINING ROOM



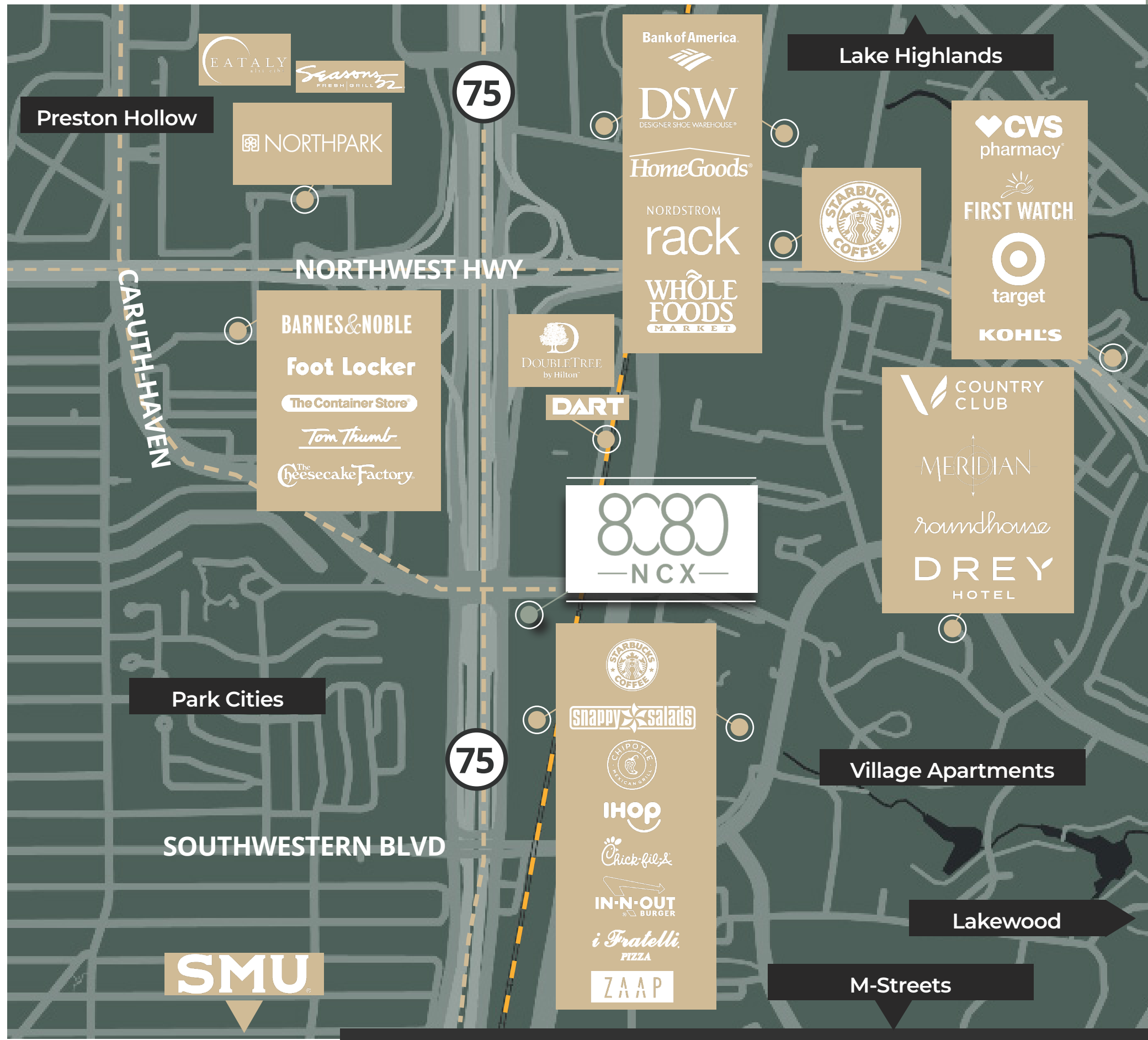
# PRE-FUNCTION



# BOARDROOM



# NCX MEETS CARUTH



- Excellent ingress/egress to North Central Expressway (US 75), Caruth-Haven, Greenville and Northwest Highway
- Walking distance to 20+ Restaurants, Hotels and Northpark Mall
- Close proximity to Park Cities, Preston Hollow, SMU, Knox-Henderson, Lake Highlands, and Lakewood

# IN THE NEIGHBORHOOD

1 Min To NorthPark Mall

2 Min To Park Cities

5 Min To SMU

5 Min To Preston Hollow

8 Min To White Rock Lake



BRAND NEW  
SPEC SUITES  
AVAILABLE



Suite 1095



Suite 1090



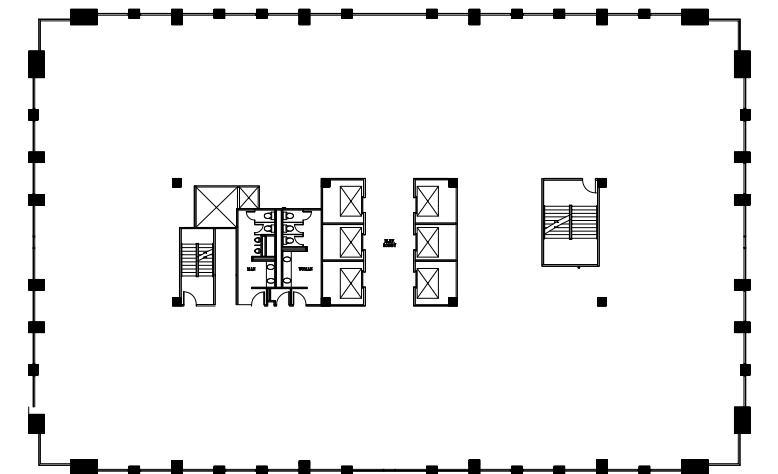
Suite 1420

# EFFICIENCY MEETS COLLABORATION

## Sample Layout



TYPICAL  
FLOORPLATE  
+/- 17,000 RSF





# 8080 — NCX —

## FOR LEASING INFORMATION

**TAYLOR LYNCH**

972.435.0514

[tlynch@forgecommercial.com](mailto:tlynch@forgecommercial.com)

**GRANT SUMNER**

972.435.0511

[gsumner@forgecommercial.com](mailto:gsumner@forgecommercial.com)

**DANIEL DEWEESE**

972-435-0436

[ddeweese@forgecommercial.com](mailto:ddeweese@forgecommercial.com)



**FORGE**  
COMMERCIAL