

KILLINGSWORTH STATION COMMERCIAL CONDO

FOR SALE | \$435,000
1435 N KILLINGSWORTH ST, PORTLAND, OR 97217



Sale Price	\$435,000
------------	------------------

OFFERING SUMMARY

Building Size:	1,188 SF
Price / SF:	\$366.16
Year Built:	2012
Zoning:	CM3

PROPERTY OVERVIEW

Ground floor 988 SF retail/office condo + 200 SF attached garage in modern mixed-use residential building. Large, multi-purpose space with office, storage room, and bathroom. CM3 zoning allows for a variety of uses.

PROPERTY HIGHLIGHTS

- 988 SF retail / office space with 200 SF of attached garage
- Ground floor unit
- Adjacent to N Killingsworth MAX station and bus stop
- Leed Platinum Certified

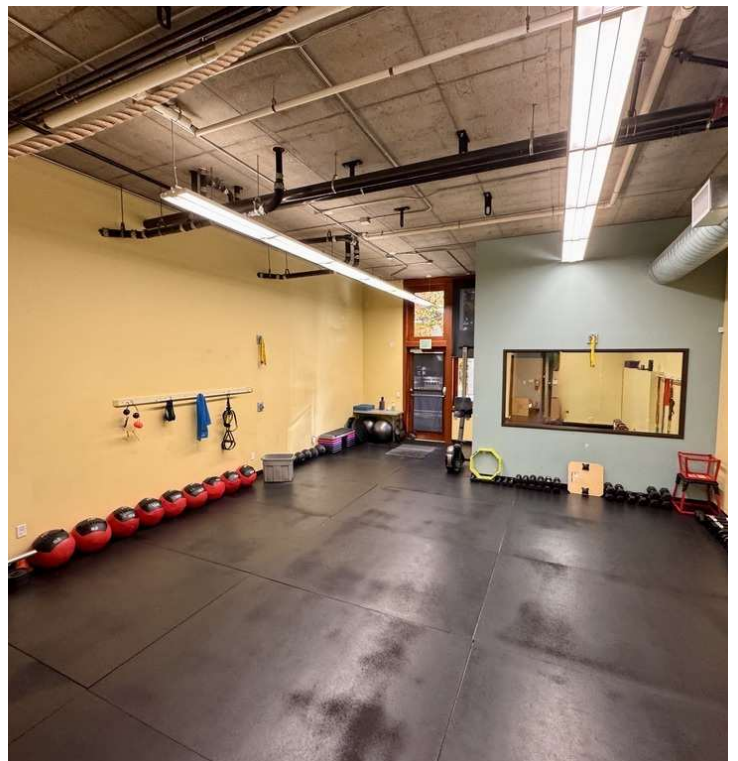
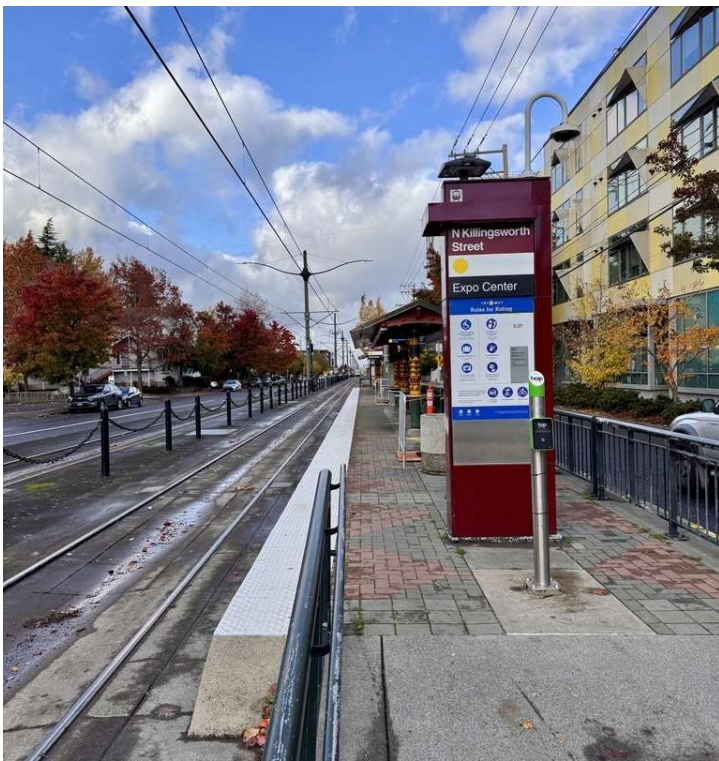
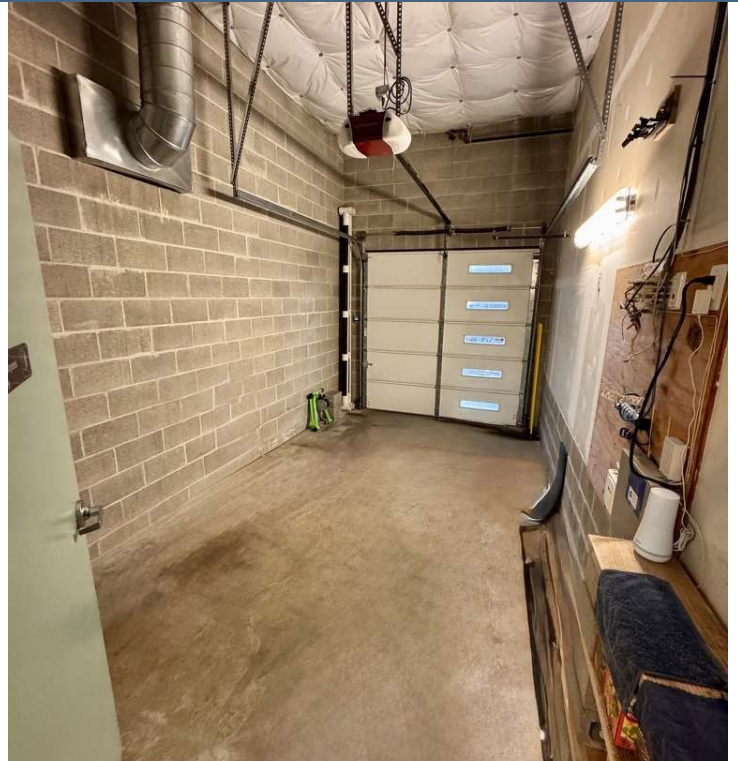
DEMOGRAPHICS	0.3 MILES	0.5 MILES	1 MILE
Total Households	1,016	3,588	11,512
Total Population	2,088	7,577	25,167
Average HH Income	\$116,678	\$117,266	\$135,044

MICK GRIEP
Associate Broker
Mick@CommercialRENW.com
503.502.9676

Commercial Real Estate NW
7320 SW Hunziker St. Ste. 203
Tigard, OR 97223
CommercialRENW.com

FOR SALE | \$435,000

1435 N KILLINGSWORTH ST, PORTLAND, OR 97217



MICK GRIEP

Associate Broker

Mick@CommercialRENW.com

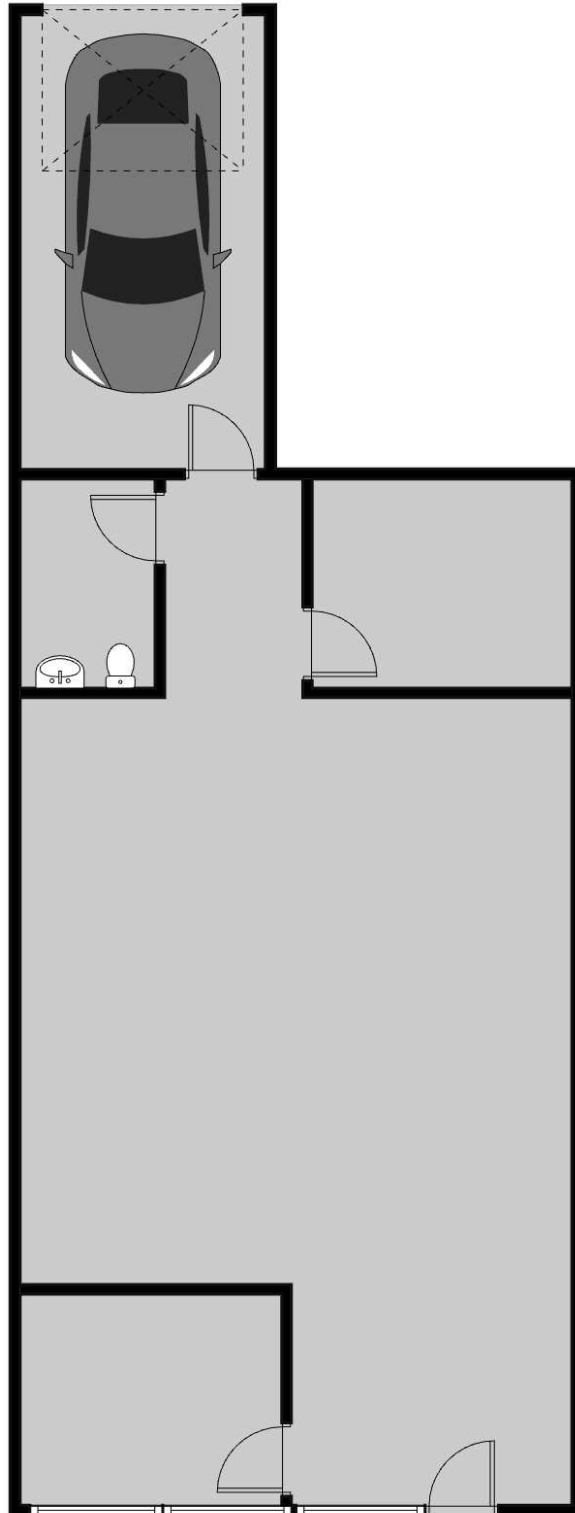
503.502.9676

Commercial Real Estate NW
7320 SW Hunziker St. Ste. 203
Tigard, OR 97223
CommercialRENW.com



FLOOR PLAN

FOR SALE | \$435,000
1435 N KILLINGSWORTH ST, PORTLAND, OR 97217



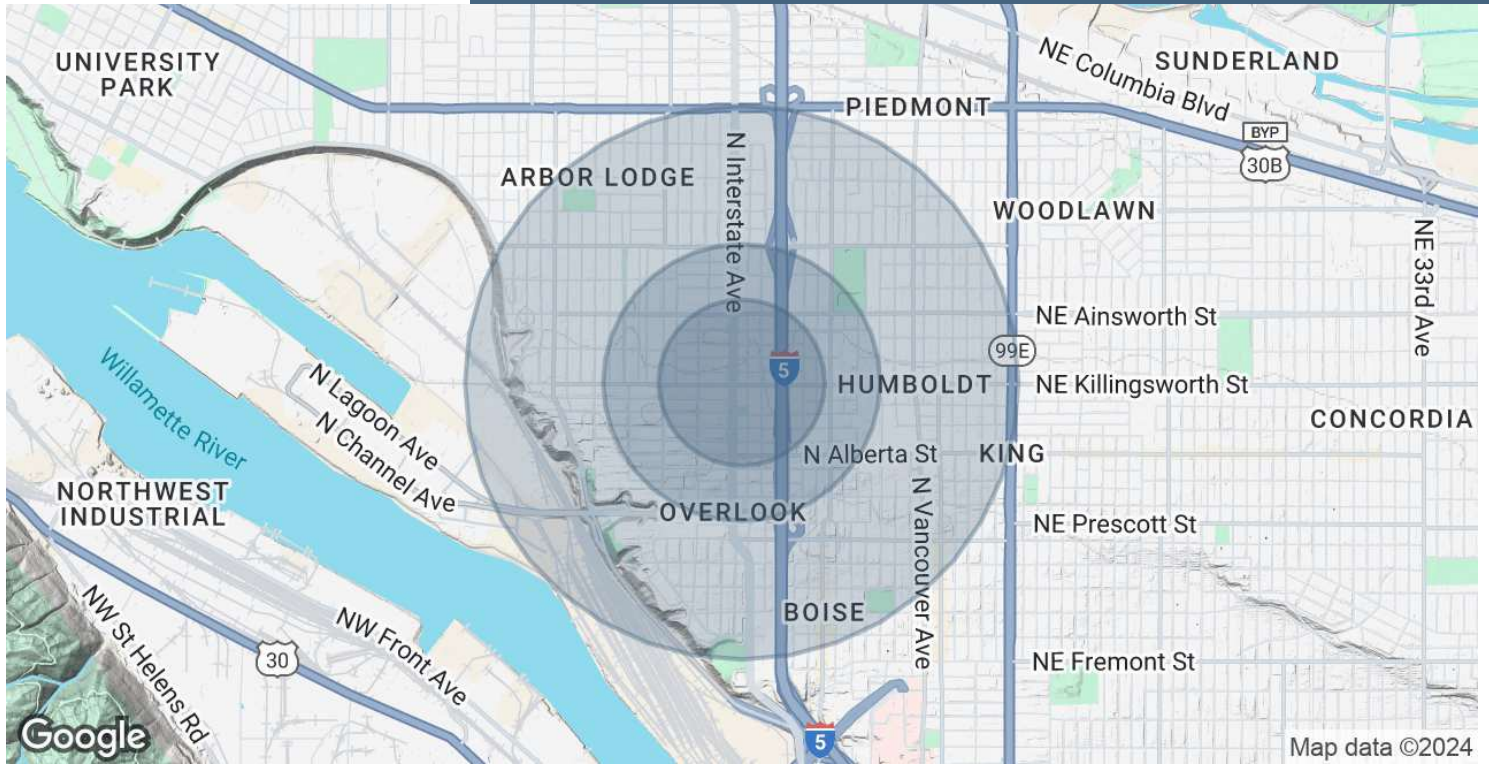
MICK GRIEP
Associate Broker
Mick@CommercialREnw.com
503.502.9676

Commercial Real Estate NW
7320 SW Hunziker St. Ste. 203
Tigard, OR 97223
CommercialREnw.com



DEMOGRAPHICS MAP & REPORT

FOR SALE | \$435,000
1435 N KILLINGSWORTH ST, PORTLAND, OR 97217



POPULATION	0.3 MILES	0.5 MILES	1 MILE
Total Population	2,088	7,577	25,167
Average Age	38	39	39
Average Age (Male)	38	38	39
Average Age (Female)	38	39	39

HOUSEHOLDS & INCOME	0.3 MILES	0.5 MILES	1 MILE
Total Households	1,016	3,588	11,512
# of Persons per HH	2.1	2.1	2.2
Average HH Income	\$116,678	\$117,266	\$135,044
Average House Value	\$655,166	\$676,347	\$703,527

Demographics data derived from AlphaMap

MICK GRIEP
Associate Broker
Mick@CommercialRENW.com
503.502.9676

Commercial Real Estate NW
7320 SW Hunziker St. Ste. 203
Tigard, OR 97223
CommercialRENW.com