

TOWN CENTER MEDICAL PLAZA

2025 N Mount Juliet Rd
Mt Juliet, TN 37122

MOB For Lease

2,203 SF



Leasing Information:
615.259.1414

Chad DeRossett, CCIM **Matthew Siedow**
TN #298379 TN #372461
615.604.0885 651.236.7725
Chad.DeRossett@lpc.com Matthew.Siedow@lpc.com

Lincoln

1005 17th Avenue S
Suite 740
Nashville, TN 37212

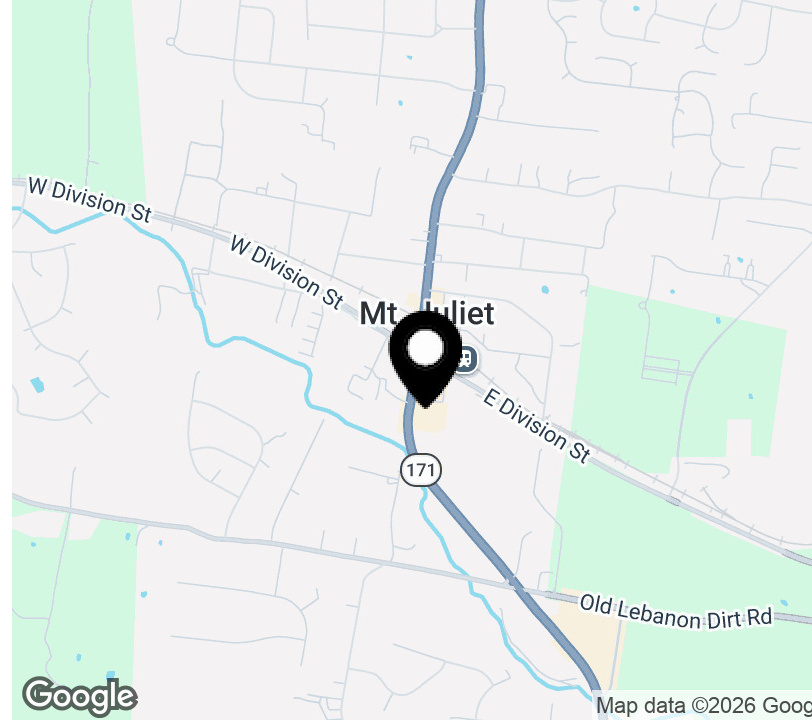
www.lpc.com

TOWN CENTER MEDICAL PLAZA

2025 N Mount Juliet Rd | Mt Juliet, TN 37122

Mob For Lease

2,203 SF



Property Overview

Modern medical office building supporting outpatient healthcare demand in a growing suburban market.

Location Overview

Located near residential growth, retail amenities, and regional roadways in Mt. Juliet.

Availabilities	SF	Lease Rate	Date Available
Suite 100	2,203 SF	Negotiable	Now

Chad DeRossett, CCIM

615.604.0885

Chad.DeRossett@lpc.com

Matthew Siedow

651.236.7725

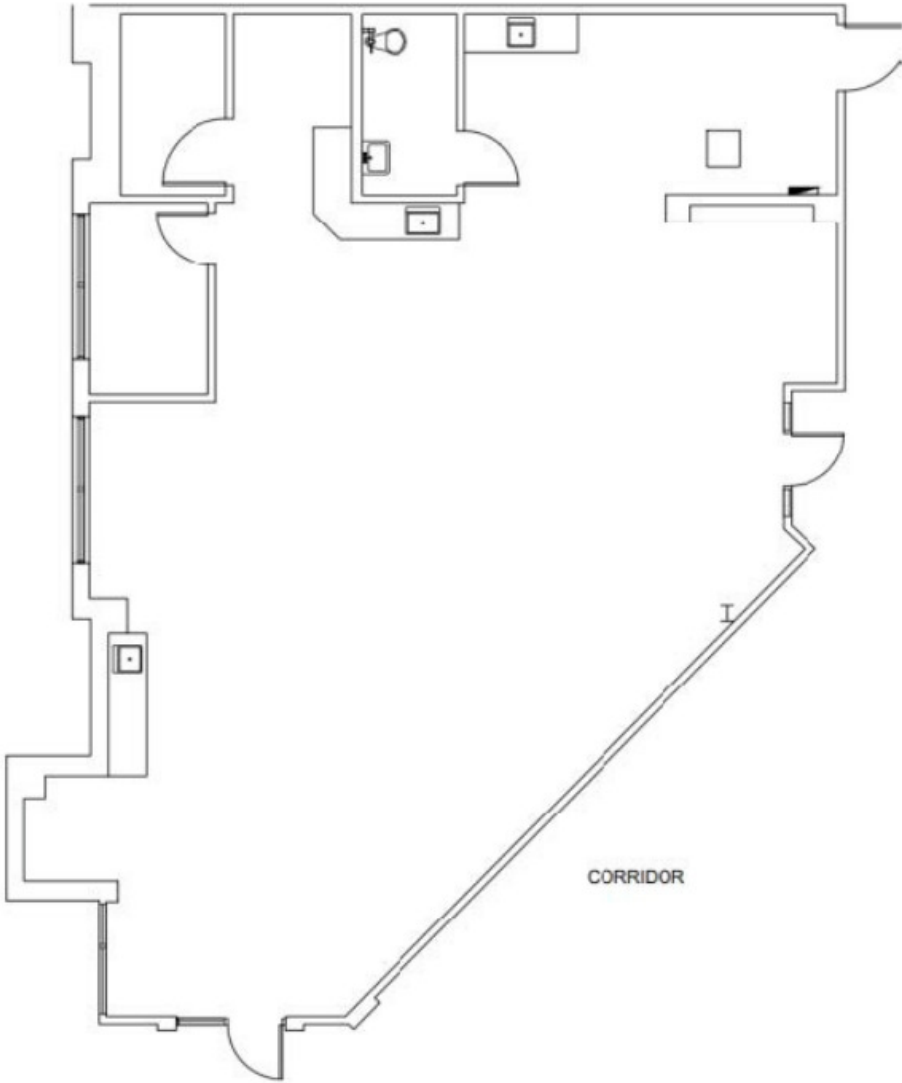
Matthew.Siedow@lpc.com

Lincoln

TOWN CENTER MEDICAL PLAZA

2025 N Mount Juliet Rd | Mt Juliet, TN 37122

Suite 100
2,203 SF



Suite	Size	Lease Rate
Suite 100	2,203 SF	Negotiable

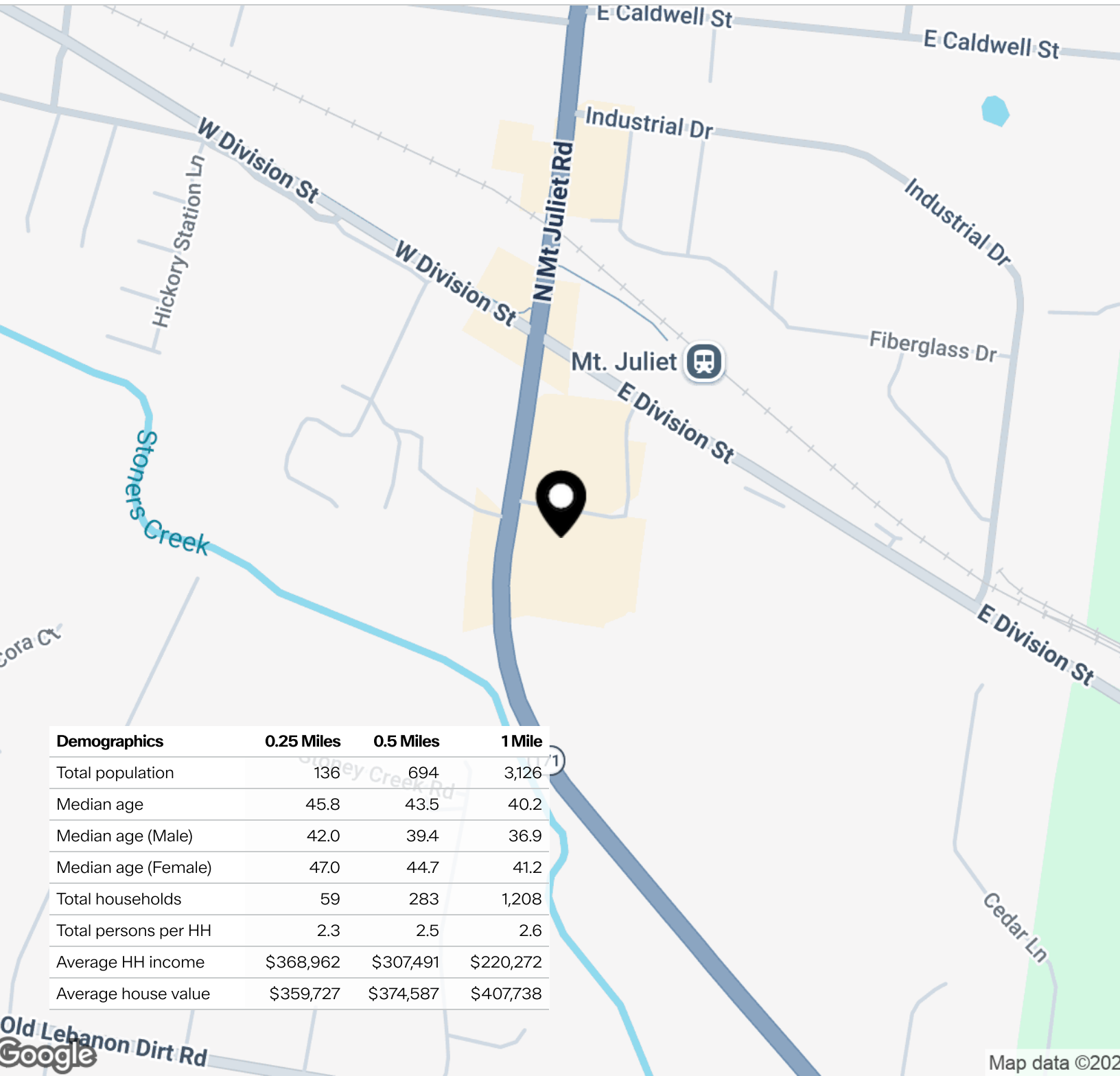
Chad DeRossett, CCIM **Matthew Siedow**
615.604.0885 651.236.7725
Chad.DeRossett@lpc.com Matthew.Siedow@lpc.com



TOWN CENTER MEDICAL PLAZA

Location Map

2025 N Mount Juliet Rd | Mt Juliet, TN 37122



Chad DeRossett, CCIM | **Matthew Siedow**
615.604.0885 | 651.236.7725
Chad.DeRossett@lpc.com | Matthew.Siedow@lpc.com

Lincoln

TOWN CENTER MEDICAL PLAZA

2025 N Mount Juliet Rd
Mt Juliet, TN 37122

Chad DeRossett, CCIM

TN #298379
615.604.0885
Chad.DeRossett@lpc.com

Matthew Siedow

TN #372461
651.236.7725
Matthew.Siedow@lpc.com

1005 17th Avenue S
Suite 740
Nashville, TN 37212
www.lpc.com | 615.259.1414

Lincoln