

227 Kent Avenue

Williamsburg, Brooklyn, NY

Location: Between North 1st Street & Grand Street

Retail Size: 900 SF

Ceiling Height: 10 FT

Frontage: 20 FT on Kent Avenue

Description: Currently built-out as a home goods store, steps from Domino Park

Highlights:

- Currently built-out as a home goods store, steps from Domino Park.
- Located on the waterfront with bustling foot traffic.
- Delivered with glass frontage, HVAC system, bathroom and additional prep sink in place.
- Located steps from Domino Park, 10 Grand Street (140,000 SF of office + 320 residential units), Site B (1,200 rental units, estimated 2027), The Refinery (460,000 SF office building in the former Domino Sugar Factory), 325 Kent Avenue (525 rental units) and One Domino Square (160 condos, 400 rental units).
- Dry use and light food use will be considered.



NEIGHBORING TENANTS:



Contact Exclusive Leasing Team

227kentave@gmail.com

All information is from sources deemed reliable. No representation is made and we do not guarantee the accuracy of any information provided. All information must be independently verified. The value of any real estate investment is dependent on a variety of factors and should be evaluated carefully by prospective purchasers/or tenants.

227 Kent Avenue

Interior Photos

Williamsburg, Brooklyn, NY



All information is from sources deemed reliable. No representation is made and we do not guarantee the accuracy of any information provided. All information must be independently verified. The value of any real estate investment is dependent on a variety of factors and should be evaluated carefully by prospective purchasers/or tenants.

Williamsburg, Brooklyn, NY

Kent Avenue

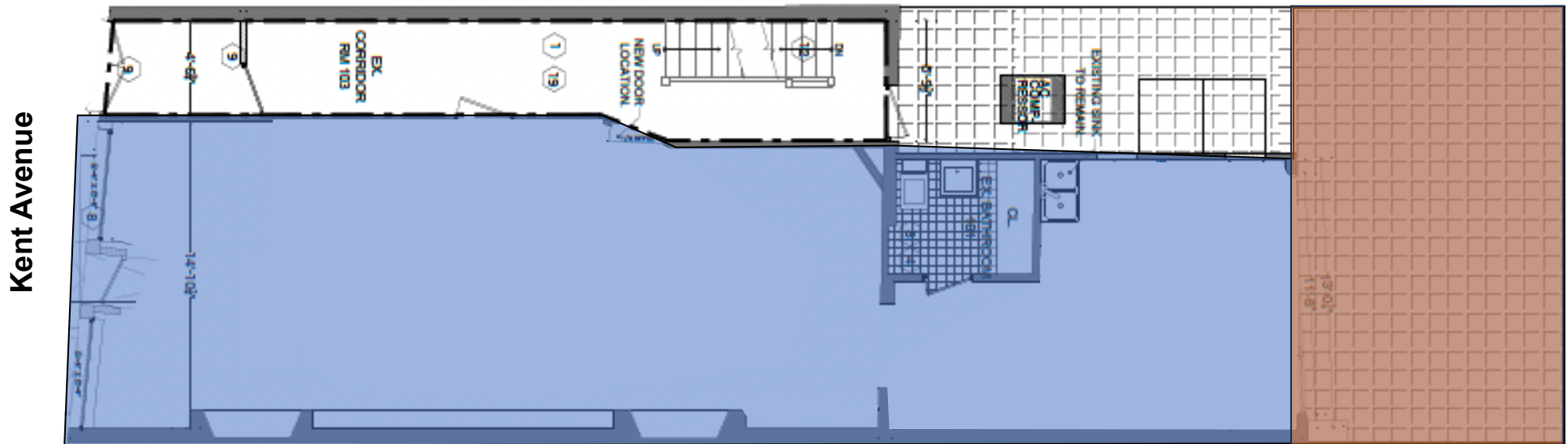


All information is from sources deemed reliable. No representation is made and we do not guarantee the accuracy of any information provided. All information must be independently verified. The value of any real estate investment is dependent on a variety of factors and should be evaluated carefully by prospective purchasers/ or tenants.

227 Kent Avenue

Williamsburg, Brooklyn, NY

Floor Plan



All information is from sources deemed reliable. No representation is made and we do not guarantee the accuracy of any information provided. All information must be independently verified. The value of any real estate investment is dependent on a variety of factors and should be evaluated carefully by prospective purchasers/or tenants.